

southco®

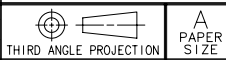
PROPRIETARY ITEM - EXCEPT FOR USES EXPRESSLY GRANTED IN WRITING INFORMATION DISCLOSED HEREON IS CONFIDENTIAL AND ALL RIGHTS PATENT AND OTHERWISE ARE RESERVED BY SOUTHCO, INC.

SOUTHCO NO. 12 FASTENER - SCREW ASSEMBLIES SLOTTED HEAD

DATE	DRAWN	CHKD	SCALE	DRAWING NUMBER
07MAR60	DST	MRT	2:1	J-12-11-A

REV	DATE	DRAWN/CHKD	DESCRIPTION	INCHES
P	20SEP2005	AJH/RLR	PRN: P2005-1232	

ALL DIMENSIONS WITHOUT TOLERANCES ARE FOR REFERENCE ONLY.



SCREW ASSEMBLY PART NUMBER			A	B	C
1008 STEEL - CASE HARDENED - ZINC PLATE, CHROMATE PLUS SEALER	302 STAINLESS STEEL PASSIVATED	1008 STEEL - CASE HARDENED - CHROMIUM PLATE PER MIL-F-14072 FINISH #M216A			
12-11-102-11	12-11-102-12	12-11-102-14	.100	.328	.486
12-11-103-1	12-11-103-1	12-11-103-1	.150	.328	.486
12-11-202-1	12-11-202-1	12-11-202-1	.100	.453	.611
12-11-203-1	12-11-203-1	12-11-203-1	.150	.453	.611
12-11-204-1	12-11-204-1	12-11-204-1	.200	.453	.611
12-11-205-1	12-11-205-1	12-11-205-1	.250	.453	.611
12-11-302-1	12-11-302-1	12-11-302-1	.100	.578	.736
12-11-303-1	12-11-303-1	12-11-303-1	.150	.578	.736
12-11-304-1	12-11-304-1	12-11-304-1	.200	.578	.736
12-11-305-1	12-11-305-1	12-11-305-1	.250	.578	.736
12-11-307-1	12-11-307-1	12-11-307-1	.350	.578	.736
12-11-402-1	12-11-402-1	12-11-402-1	.100	.703	.861
12-11-403-1	12-11-403-1	12-11-403-1	.150	.703	.861
12-11-404-1	12-11-404-1	12-11-404-1	.200	.703	.861
12-11-405-1	12-11-405-1	12-11-405-1	.250	.703	.861
12-11-407-1	12-11-407-1	12-11-407-1	.350	.703	.861
12-11-409-1	12-11-409-1	12-11-409-1	.450	.703	.861
12-11-502-1	12-11-502-1	12-11-502-1	.100	.828	.986
12-11-503-1	12-11-503-1	12-11-503-1	.150	.828	.986
12-11-504-1	12-11-504-1	12-11-504-1	.200	.828	.986
12-11-505-1	12-11-505-1	12-11-505-1	.250	.828	.986
12-11-507-1	12-11-507-1	12-11-507-1	.350	.828	.986
12-11-509-1	12-11-509-1	12-11-509-1	.450	.828	.986
12-11-511-1	12-11-511-1	12-11-511-1	.550	.828	.986
12-11-602-1	12-11-602-1	12-11-602-1	.100	.953	1.111
12-11-603-1	12-11-603-1	12-11-603-1	.150	.953	1.111
12-11-604-1	12-11-604-1	12-11-604-1	.200	.953	1.111
12-11-605-1	12-11-605-1	12-11-605-1	.250	.953	1.111
12-11-607-1	12-11-607-1	12-11-607-1	.350	.953	1.111
12-11-609-1	12-11-609-1	12-11-609-1	.450	.953	1.111
12-11-611-1	12-11-611-1	12-11-611-1	.550	.953	1.111
12-11-613-1	12-11-613-1	12-11-613-1	.650	.953	1.111
12-11-615-1	12-11-615-1	12-11-615-1	.750	.953	1.111
12-11-702-1	12-11-702-1	12-11-702-1	.100	1.078	1.236
12-11-703-1	12-11-703-1	12-11-703-1	.150	1.078	1.236
12-11-704-1	12-11-704-1	12-11-704-1	.200	1.078	1.236
12-11-705-1	12-11-705-1	12-11-705-1	.250	1.078	1.236
12-11-707-1	12-11-707-1	12-11-707-1	.350	1.078	1.236
12-11-709-1	12-11-709-1	12-11-709-1	.450	1.078	1.236
12-11-711-1	12-11-711-1	12-11-711-1	.550	1.078	1.236
12-11-713-1	12-11-713-1	12-11-713-1	.650	1.078	1.236
12-11-715-1	12-11-715-1	12-11-715-1	.750	1.078	1.236
12-11-717-1	12-11-717-1	12-11-717-1	.850	1.078	1.236
12-11-802-1	12-11-802-1	12-11-802-1	.100	1.203	1.361
12-11-803-1	12-11-803-1	12-11-803-1	.150	1.203	1.361
12-11-804-1	12-11-804-1	12-11-804-1	.200	1.203	1.361
12-11-805-1	12-11-805-1	12-11-805-1	.250	1.203	1.361
12-11-807-1	12-11-807-1	12-11-807-1	.350	1.203	1.361
12-11-809-1	12-11-809-1	12-11-809-1	.450	1.203	1.361
12-11-811-1	12-11-811-1	12-11-811-1	.550	1.203	1.361
12-11-813-1	12-11-813-1	12-11-813-1	.650	1.203	1.361
12-11-815-1	12-11-815-1	12-11-815-1	.750	1.203	1.361
12-11-817-1	12-11-817-1	12-11-817-1	.850	1.203	1.361
12-11-819-1	12-11-819-1	12-11-819-14	.950	1.203	1.361
12-11-1015-11	12-11-1015-12	- - -	.750	1.453	1.611

- NOTES:
- A. FOR SCREWS WITHOUT WEAR WASHER, CHANGE FIRST DIGIT OF SECOND UNIT OF PART NUMBER TO *2* - EXAMPLE 12-21-102-11
 - B. FOR STAINLESS STEEL SCREW WITH BLACK OXIDE PER MIL-C-13924 WITH SUPPLEMENTARY WAX PRESERVATIVE, CHANGE THE LAST TWO DIGITS FROM 12 TO 15. EXAMPLE 12-11-102-15

