

| REV | DATE | DRAWN/CHKD | DESCRIPTION |
|-----|-----------|------------|-----------------|
| C | 14OCT2004 | AJH/JSS | PRN: P2004-1179 |

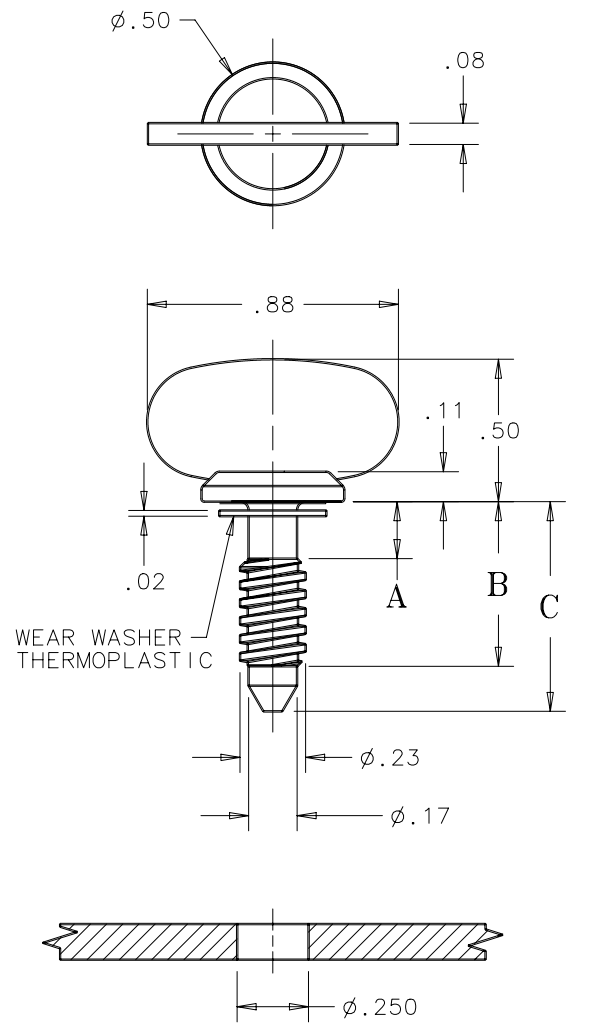
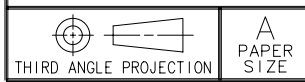
SCREW ASSEMBLY PART NUMBERS

| SCREW ASSEMBLY (WITH WEAR WASHER) | SCREW ASSEMBLY (WITHOUT WEAR WASHER) |
|-----------------------------------|--------------------------------------|
|-----------------------------------|--------------------------------------|

| A | B | C |
|---|---|---|
|---|---|---|

INCHES

ALL DIMENSIONS WITHOUT TOLERANCES ARE FOR REFERENCE ONLY.



PANEL PREPARATION

| | | | | |
|--------------|--------------|------|-------|-------|
| 12-12-102-ZZ | 12-22-102-ZZ | .100 | | |
| 12-12-103-ZZ | 12-22-103-ZZ | .150 | .328 | .486 |
| 12-12-202-ZZ | 12-22-202-ZZ | .100 | | |
| 12-12-203-ZZ | 12-22-203-ZZ | .150 | .453 | .611 |
| 12-12-204-ZZ | 12-22-204-ZZ | .200 | | |
| 12-12-205-ZZ | 12-22-205-ZZ | .250 | | |
| 12-12-302-ZZ | 12-22-302-ZZ | .100 | | |
| 12-12-303-ZZ | 12-22-303-ZZ | .150 | .578 | .736 |
| 12-12-304-ZZ | 12-22-304-ZZ | .200 | | |
| 12-12-305-ZZ | 12-22-305-ZZ | .250 | | |
| 12-12-307-ZZ | 12-22-307-ZZ | .350 | | |
| 12-12-402-ZZ | 12-22-402-ZZ | .100 | | |
| 12-12-403-ZZ | 12-22-403-ZZ | .150 | .703 | .861 |
| 12-12-404-ZZ | 12-22-404-ZZ | .200 | | |
| 12-12-405-ZZ | 12-22-405-ZZ | .250 | | |
| 12-12-407-ZZ | 12-22-407-ZZ | .350 | | |
| 12-12-409-ZZ | 12-22-409-ZZ | .450 | | |
| 12-12-502-ZZ | 12-22-502-ZZ | .100 | | |
| 12-12-503-ZZ | 12-22-503-ZZ | .150 | .828 | .986 |
| 12-12-504-ZZ | 12-22-504-ZZ | .200 | | |
| 12-12-505-ZZ | 12-22-505-ZZ | .250 | | |
| 12-12-507-ZZ | 12-22-507-ZZ | .350 | | |
| 12-12-509-ZZ | 12-22-509-ZZ | .450 | | |
| 12-12-511-ZZ | 12-22-511-ZZ | .550 | | |
| 12-12-602-ZZ | 12-22-602-ZZ | .100 | | |
| 12-12-603-ZZ | 12-22-603-ZZ | .150 | .953 | 1.111 |
| 12-12-604-ZZ | 12-22-604-ZZ | .200 | | |
| 12-12-605-ZZ | 12-22-605-ZZ | .250 | | |
| 12-12-607-ZZ | 12-22-607-ZZ | .350 | | |
| 12-12-609-ZZ | 12-22-609-ZZ | .450 | | |
| 12-12-611-ZZ | 12-22-611-ZZ | .550 | | |
| 12-12-613-ZZ | 12-22-613-ZZ | .650 | 1.078 | 1.236 |
| 12-12-615-ZZ | 12-22-615-ZZ | .750 | | |
| 12-12-702-ZZ | 12-22-702-ZZ | .100 | | |
| 12-12-703-ZZ | 12-22-703-ZZ | .150 | | |
| 12-12-704-ZZ | 12-22-704-ZZ | .200 | | |
| 12-12-705-ZZ | 12-22-705-ZZ | .250 | | |
| 12-12-707-ZZ | 12-22-707-ZZ | .350 | | |
| 12-12-709-ZZ | 12-22-709-ZZ | .450 | | |
| 12-12-711-ZZ | 12-22-711-ZZ | .550 | | |
| 12-12-713-ZZ | 12-22-713-ZZ | .650 | | |
| 12-12-715-ZZ | 12-22-715-ZZ | .750 | | |
| 12-12-717-ZZ | 12-22-717-ZZ | .850 | | |
| 12-12-802-ZZ | 12-22-802-ZZ | .100 | | |
| 12-12-803-ZZ | 12-22-803-ZZ | .150 | | |
| 12-12-804-ZZ | 12-22-804-ZZ | .200 | | |
| 12-12-805-ZZ | 12-22-805-ZZ | .250 | | |
| 12-12-807-ZZ | 12-22-807-ZZ | .350 | | |
| 12-12-809-ZZ | 12-22-809-ZZ | .450 | 1.203 | 1.361 |
| 12-12-811-ZZ | 12-22-811-ZZ | .550 | | |
| 12-12-813-ZZ | 12-22-813-ZZ | .650 | | |
| 12-12-815-ZZ | 12-22-815-ZZ | .750 | | |
| 12-12-817-ZZ | 12-22-817-ZZ | .850 | | |
| 12-12-819-ZZ | 12-22-819-ZZ | .950 | | |

NOTES:

- A. MATERIAL AND FINISH (-ZZ):
- 15 - STAINLESS STEEL, BLACK OXIDE
 - 20 - STEEL, CASE HARDENED
ZINC PLATE PLUS BLACK CHROMATE DIP
 - 27 - STEEL, CASE HARDENED
ZINC PLATE PLUS BLACK ORGANIC COATING