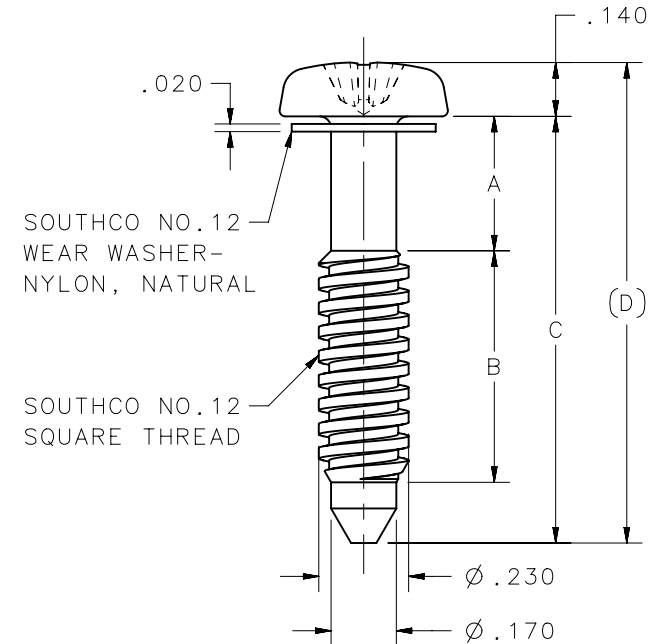
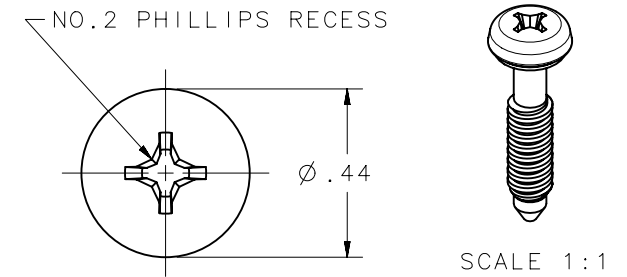


| PART NUMBER | A    | B    | C    | D     |
|-------------|------|------|------|-------|
| 12-P-102    | .100 | .228 | .486 | .626  |
| 12-P-103    | .150 | .178 |      |       |
| 12-P-202    | .100 | .353 | .611 | .751  |
| 12-P-203    | .150 | .303 |      |       |
| 12-P-204    | .200 | .253 |      |       |
| 12-P-205    | .250 | .203 |      |       |
| 12-P-302    | .100 | .478 |      |       |
| 12-P-303    | .150 | .428 | .736 | .876  |
| 12-P-304    | .200 | .378 |      |       |
| 12-P-305    | .250 | .328 |      |       |
| 12-P-307    | .350 | .228 |      |       |
| 12-P-402    | .100 | .603 |      |       |
| 12-P-403    | .150 | .553 | .861 | 1.001 |
| 12-P-404    | .200 | .503 |      |       |
| 12-P-405    | .250 | .453 |      |       |
| 12-P-407    | .350 | .353 |      |       |
| 12-P-409    | .450 | .253 |      |       |
| 12-P-502    | .100 | .728 | .986 | 1.126 |
| 12-P-503    | .150 | .678 |      |       |
| 12-P-504    | .200 | .628 |      |       |
| 12-P-505    | .250 | .578 |      |       |
| 12-P-507    | .350 | .478 |      |       |
| 12-P-509    | .450 | .378 |      |       |
| 12-P-511    | .550 | .278 |      |       |

| PART NUMBER | A    | B     | C     | D     |
|-------------|------|-------|-------|-------|
| 12-P-602    | .100 | .853  | 1.111 | 1.251 |
| 12-P-603    | .150 | .803  |       |       |
| 12-P-604    | .200 | .753  |       |       |
| 12-P-605    | .250 | .703  |       |       |
| 12-P-607    | .350 | .603  |       |       |
| 12-P-609    | .450 | .503  |       |       |
| 12-P-611    | .550 | .403  |       |       |
| 12-P-613    | .650 | .303  |       |       |
| 12-P-615    | .750 | .203  |       |       |
| 12-P-702    | .100 | .978  |       |       |
| 12-P-703    | .150 | .928  |       |       |
| 12-P-704    | .200 | .878  |       |       |
| 12-P-705    | .250 | .828  |       |       |
| 12-P-707    | .350 | .728  |       |       |
| 12-P-709    | .450 | .628  |       |       |
| 12-P-711    | .550 | .528  |       |       |
| 12-P-713    | .650 | .428  |       |       |
| 12-P-715    | .750 | .328  |       |       |
| 12-P-717    | .850 | .228  |       |       |
| 12-P-802    | .100 | 1.103 | 1.361 | 1.501 |
| 12-P-803    | .150 | 1.053 |       |       |
| 12-P-804    | .200 | 1.003 |       |       |
| 12-P-805    | .250 | .953  |       |       |
| 12-P-807    | .350 | .853  |       |       |
| 12-P-809    | .450 | .753  |       |       |
| 12-P-811    | .550 | .653  |       |       |
| 12-P-813    | .650 | .553  |       |       |
| 12-P-815    | .750 | .453  |       |       |
| 12-P-817    | .850 | .353  |       |       |
| 12-P-819    | .950 | .253  |       |       |

| REVISION HISTORY |           |         |                 |
|------------------|-----------|---------|-----------------|
| REV              | DATE      | BY      | DESCRIPTION     |
| F                | 04OCT2012 | DMS/YGC | PRN: P2012-1354 |



|  |   |   |                   |                                 |
|--|---|---|-------------------|---------------------------------|
| 12-P-XXX   | SCREW   | LOW CARBON STEEL                                    | CASE HARDENED     | ZINC PLATE CHROMATE PLUS SEALER |
| PART NUMBER  | TYPE OF COMPONENT   | MATERIAL  | HEAT TREAT        | FINISH                          |
|  | THIRD ANGLE PROJECTION                                    | <br>CONNECT • CREATE • INNOVATE                     |                   |                                 |
|  | INCHES [MM]   |   |                   |                                 |
| SURFACE AREA   | TOLERANCES UNLESS OTHERWISE NOTED                         | DESCRIPTION<br>NO.12 PHILLIPS RECESS SCREW ASSEMBLY |                   |                                 |
| VOLUME   | ALL DIMENSIONS WITHOUT TOLERANCES ARE FOR REFERENCE ONLY. | SIZE<br>A   | SYSTEM<br>NX      | DWG NO.<br>J-12-P-1             |
| PROPRIETARY ITEM<br>EXCEPT FOR USES EXPRESSLY GRANTED IN WRITING, INFORMATION DISCLOSED HEREON IS CONFIDENTIAL AND ALL RIGHTS, PATENT AND OTHERWISE, ARE RESERVED BY SOUTHCO, INC. | PER ASME Y14.5M-1994                                      | DRAWN BY<br>JSS/JHV                                 | DATE<br>30AUG1989 | SCALE<br>2:1                    |
|  |   |   | SHEET<br>1 OF 1   |                                 |