



SOUTHCO No. 27 ADJUSTABLE PAWL FASTENER - ASSEMBLY
LOW PROFILE SLOTTED HEAD - TYPE A

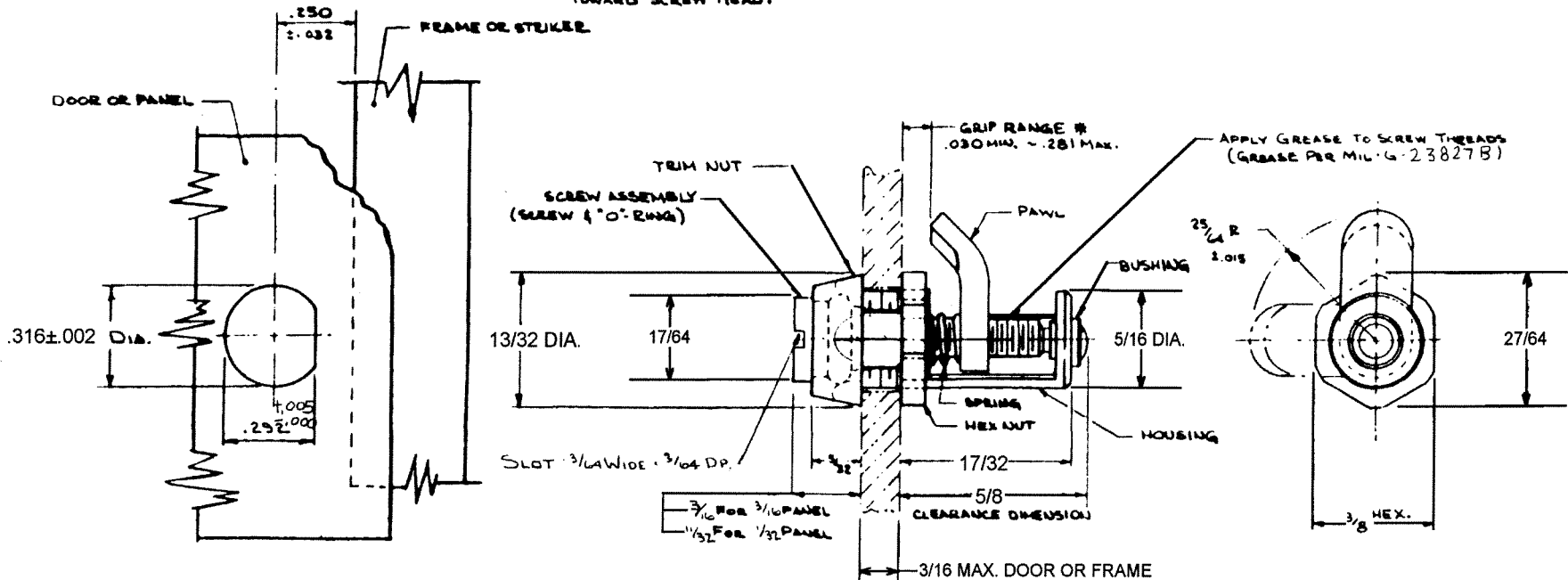
DATE	DRAWN	CHKD	SCALE	DRAWING NUMBER
8-17-88	GVC		N.T.S.	J-27-10-501-10

REV. LET.	DATE	BY-CHKD	REVISIONS	ITEM	PART No.	MATERIAL	FINISH	R.S.	DATE	APP.
A	3-1-87	JAL	PRN: 27-43	ASSEMBLY	27-10-501-10			A		
B	4-11-89	DWF	PRN: 27-46	SCREWASSEMBLY	27-10-501-10	SEE NOTE 'A'	SEE NOTE 'A'	B		
C	8-15-89	ESK	PRN: 27-48	HOUSING	27-0-7956-15	STEEL	ZINC ALLOY PLATE BRIGHT, PLUS SEALEZ.	C		
D	11-13-89	PRE	PRN: 27-48B	PAWL	27-13-101-15	STEEL	" " "	D		
E	4 DEC 92	JSY	PRN: 27-59	SPRING	27-14-102-24	STAINLESS STEEL	PASSIVATE			
F	18 JAN 93	JGK	PRN: 14-75	TRIM NUT	27-82-403-11	STEEL				
				HEX NUT	27-83-301-24	STAINLESS STEEL	PASSIVATE			
				BUSHING	27-81-301-15	BRASS	NATURAL			

THESE ASSEMBLIES ARE NON-REPAIRABLE ITEMS AND COMPONENTS ARE NOT AVAILABLE AS REPLACEMENT OR REPAIR PARTS

NOTE 'A' - SCREW - STEEL, ZINC ALLOY PLATE BRIGHT, PLUS SEALEZ.
 'O' RING - SYNTHETIC RUBBER, NATURAL

IF OUTER PANEL THICKNESS PERMITTING, MAX. GRIP MAY BE EXTENDED WHERE NECESSARY BY ADJUSTING HEX NUT TOWARD SCREW HEAD.



MOUNTING INSTRUCTIONS

PUNCH SHAPED HOLE IN PANEL, LOCATED AS SHOWN. INSERT FASTENER FROM BACK SIDE OF PANEL, MAKING SURE HEX NUT IS AT BACK EDGE OF HOUSING CUT-OUT. SLIP TRIM NUT OVER SCREW AND RUN DOWN FINGER TIGHT AGAINST PANEL. WITH PAWL IN LOCKED POSITION AND HOUSING PROPERLY ORIENTED, HOLD HOUSING IN POSITION AND TIGHTEN HEX NUT HARD AGAINST PANEL WITH 1/2 OPEN-END WRENCH

PROPRIETARY ITEM

EXCEPT FOR USES EXPRESSLY GRANTED IN WRITING, INFORMATION DISCLOSED HEREON IS CONFIDENTIAL AND ALL RIGHTS, PATENT AND OTHERWISE ARE RESERVED BY SOUTHCO INC.

TOLERANCE UNLESS OTHERWISE NOTED
 DECIMALS ± .010 FRACTIONS ± 1/32 ANGLES ± 2°

DRAWING NUMBER

J-27-10-501-10