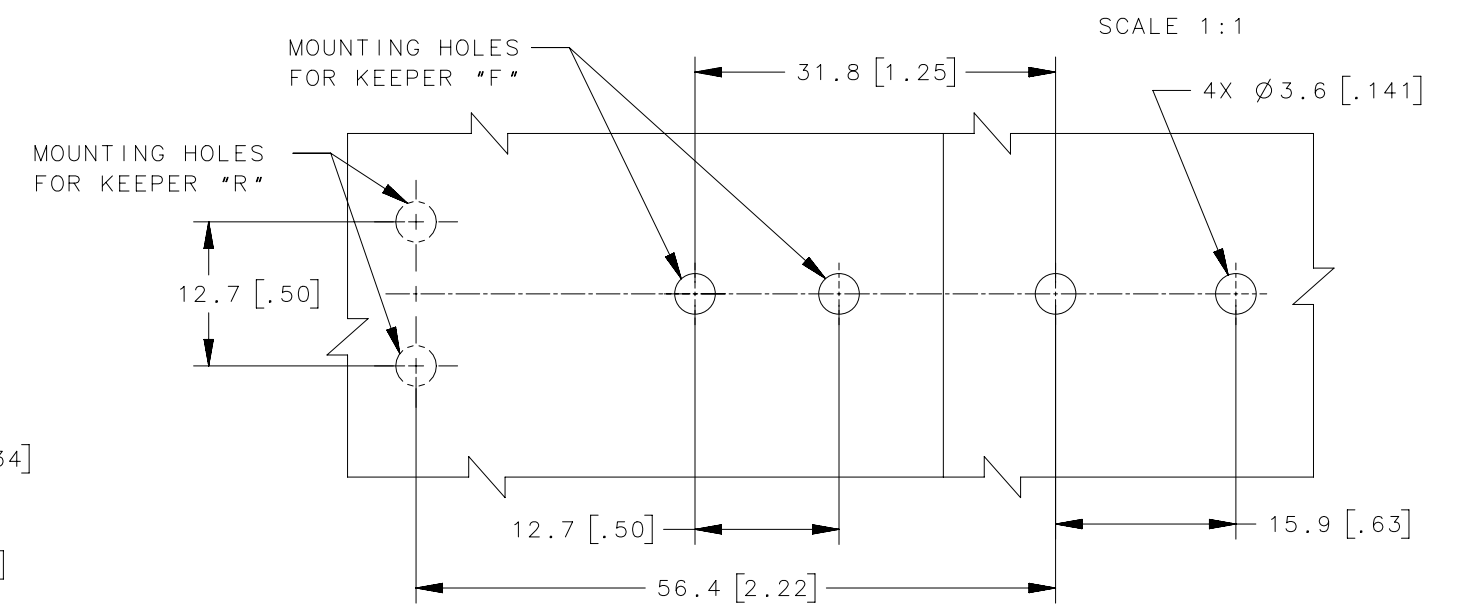
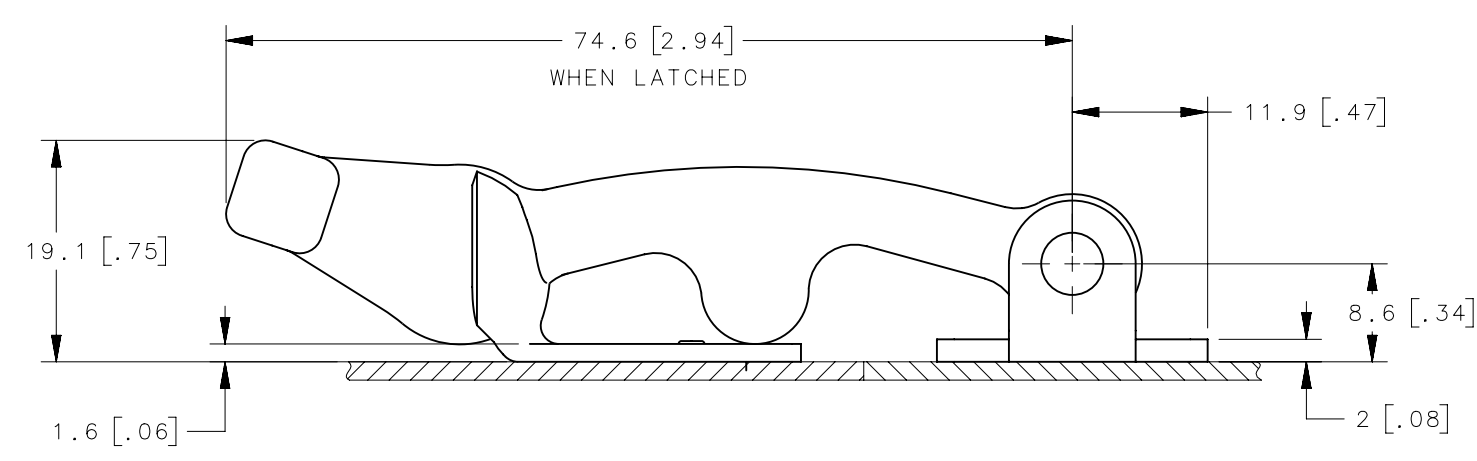
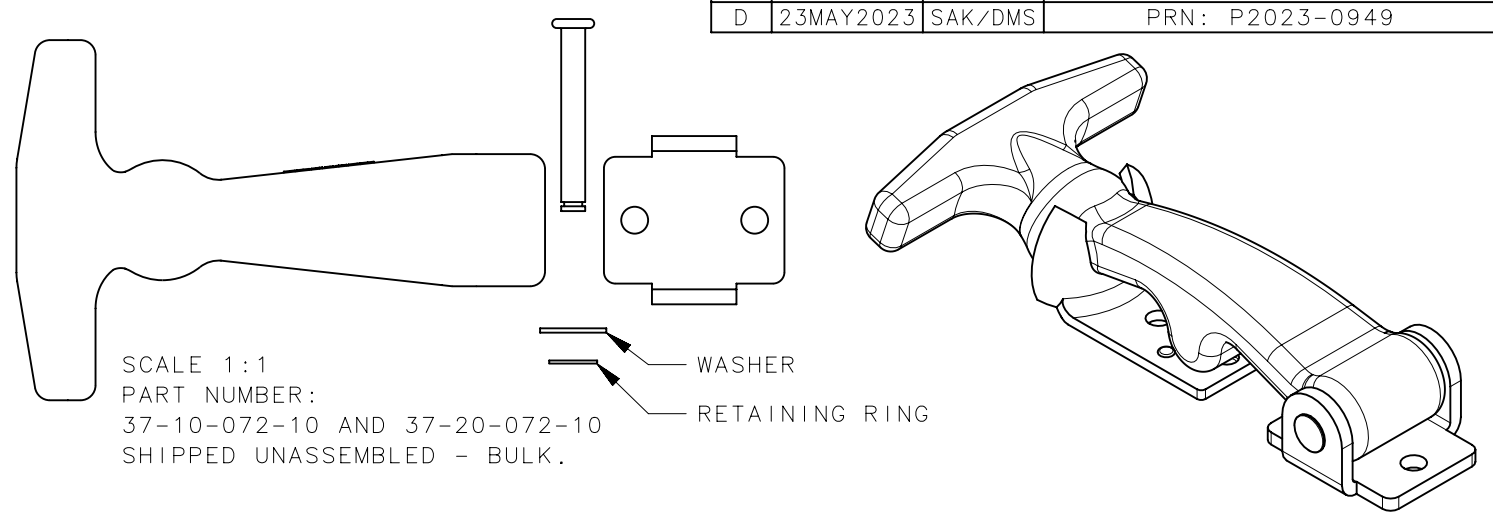
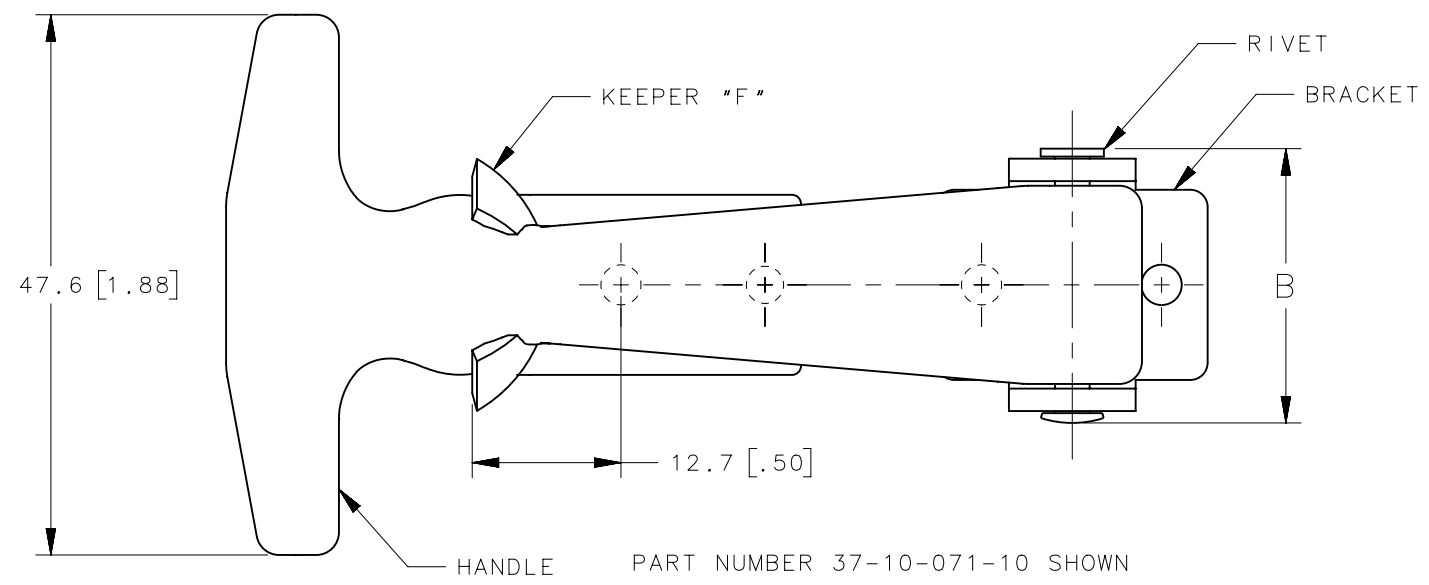
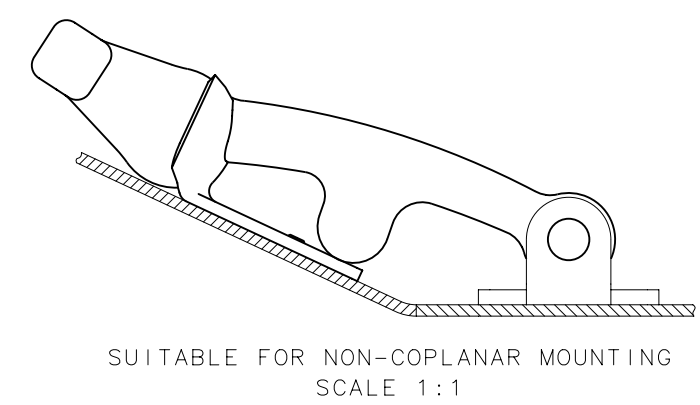
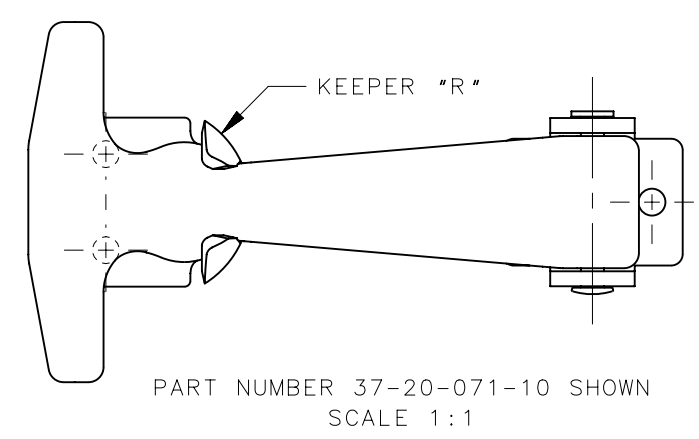


| REVISION HISTORY | | | |
|------------------|-----------|---------|-----------------|
| REV | DATE | BY | DESCRIPTION |
| D | 23MAY2023 | SAK/DMS | PRN: P2023-0949 |



PANEL PREPARATION

| | | | | | | | | |
|----------------|----------------------------|--------------------|------------------|-------------------|------------|-------------|------------|---|
| 37-20-071-10-P | LATCH ASSEMBLY, SEE NOTE 4 | - | - | - | - | - | - | - |
| 37-20-072-10 | LATCH SHIPPED UNASSEMBLED | EPDM RUBBER, BLACK | SEE NOTE 2 | SEE NOTE 2 | SEE NOTE 2 | R | 25.4[1.00] | |
| 37-10-072-10 | LATCH SHIPPED UNASSEMBLED | EPDM RUBBER, BLACK | SEE NOTE 2 | SEE NOTE 2 | SEE NOTE 2 | F | 25.4[1.00] | |
| 37-25-071-24 | KEEPER | - | - | - | SEE NOTE 3 | R | - | |
| 37-11-071-20 | HANDLE SUB-ASSEMBLY | EPDM RUBBER, BLACK | SEE NOTE 3 | SEE NOTE 3 | - | - | - | |
| 37-20-071-20 | LATCH, ASSEMBLED | - | - | - | - | - | 24.2[.95] | |
| 37-25-071-17 | KEEPER | - | - | - | SEE NOTE 2 | R | - | |
| 37-11-071-10 | HANDLE SUB-ASSEMBLY | EPDM RUBBER, BLACK | SEE NOTE 2 | ALUMINUM, NATURAL | - | - | - | |
| 37-20-071-10 | LATCH, ASSEMBLED | - | - | - | - | - | 24.2[.95] | |
| 37-15-071-24 | KEEPER | - | - | - | SEE NOTE 3 | F | - | |
| 37-11-071-20 | HANDLE SUB-ASSEMBLY | EPDM RUBBER, BLACK | SEE NOTE 3 | SEE NOTE 3 | - | - | - | |
| 37-10-071-20 | LATCH, ASSEMBLED | - | - | - | - | - | 24.2[.95] | |
| 37-15-071-17 | KEEPER | - | - | - | SEE NOTE 2 | F | - | |
| 37-11-071-10 | HANDLE SUB-ASSEMBLY | EPDM RUBBER, BLACK | SEE NOTE 2 | ALUMINUM, NATURAL | - | - | - | |
| 37-10-071-10 | LATCH, ASSEMBLED | - | - | - | - | - | 24.2[.95] | |
| PART NUMBER | TYPE OF COMPONENT | HANDLE | BRACKET | RIVET/STUD | KEEPER | KEEPER TYPE | B | |
| | | | MATERIAL, FINISH | | | | | |



- NOTES:
1. LATCH AND KEEPER SHIPPED SEPARATELY, BULK.
 2. STEEL, ZINC PLATE, BRIGHT CHROMATE PLUS SEALER.
 3. STAINLESS STEEL, PASSIVATED.
 4. 37-20-071-10-P IS PACKAGED ONE LATCH AND ONE KEEPER PER BAG.

| | | |
|--|---|---|
| THIRD ANGLE PROJECTION | | |
| MILLIMETERS [IN] | | |
| SURFACE AREA | TOLERANCES UNLESS OTHERWISE NOTED | DESCRIPTION |
| VOLUME | ALL DIMENSIONS WITHOUT TOLERANCES ARE FOR REFERENCE ONLY. | 37 FLEXIBLE DRAW LATCH 070 SERIES, T-HANDLE |
| PROPRIETARY ITEM | PER ASME Y14.5M-1994 | SIZE A3 SYSTEM NX DWG NO. J-37-070 |
| EXCEPT FOR USES EXPRESSLY GRANTED IN WRITING, INFORMATION DISCLOSED HEREON IS CONFIDENTIAL AND ALL RIGHTS, PATENT AND OTHERWISE, ARE RESERVED BY SOUTHCO, INC. | DRAWN BY DMS/YGC DATE 13JAN2016 SCALE 1.5:1 SHEET 1 OF 1 | |