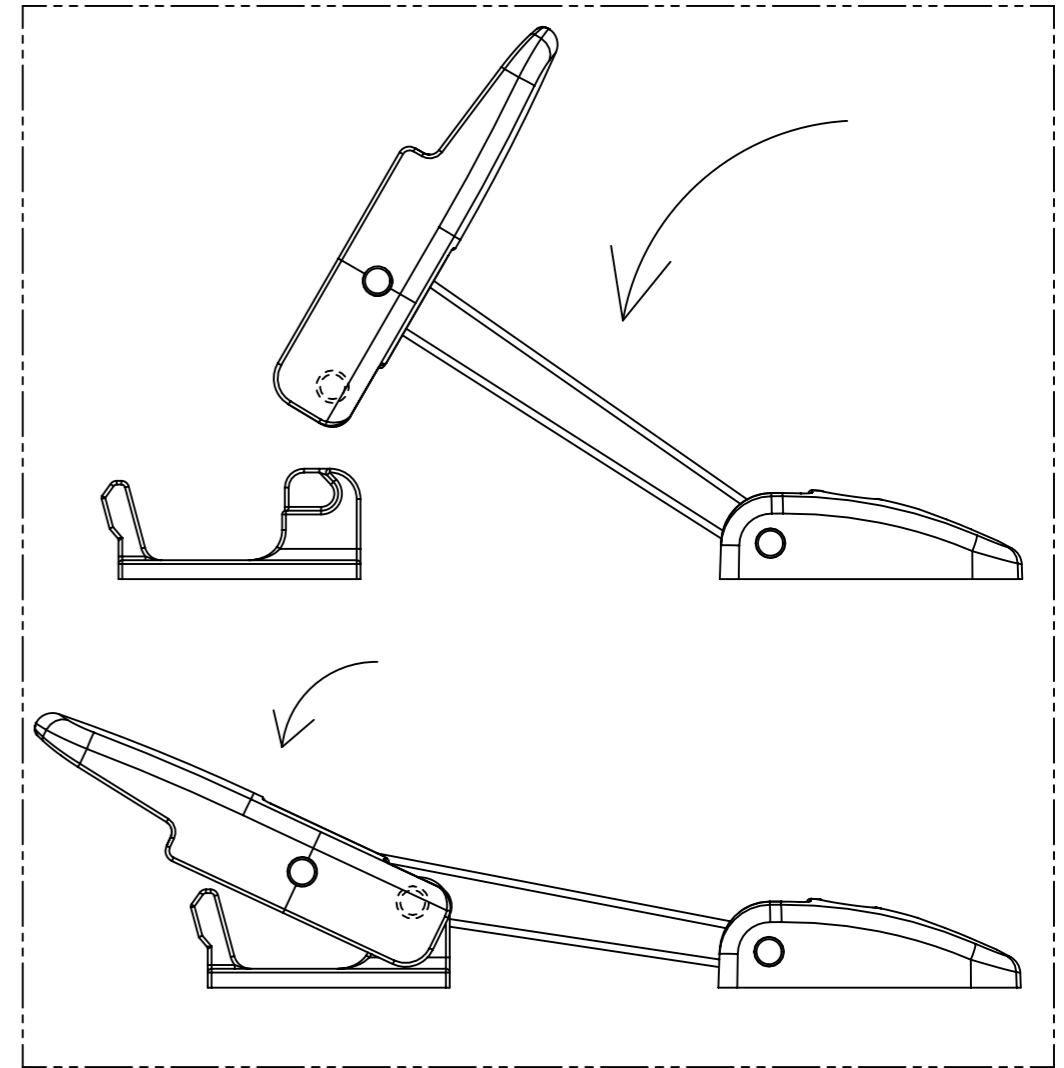
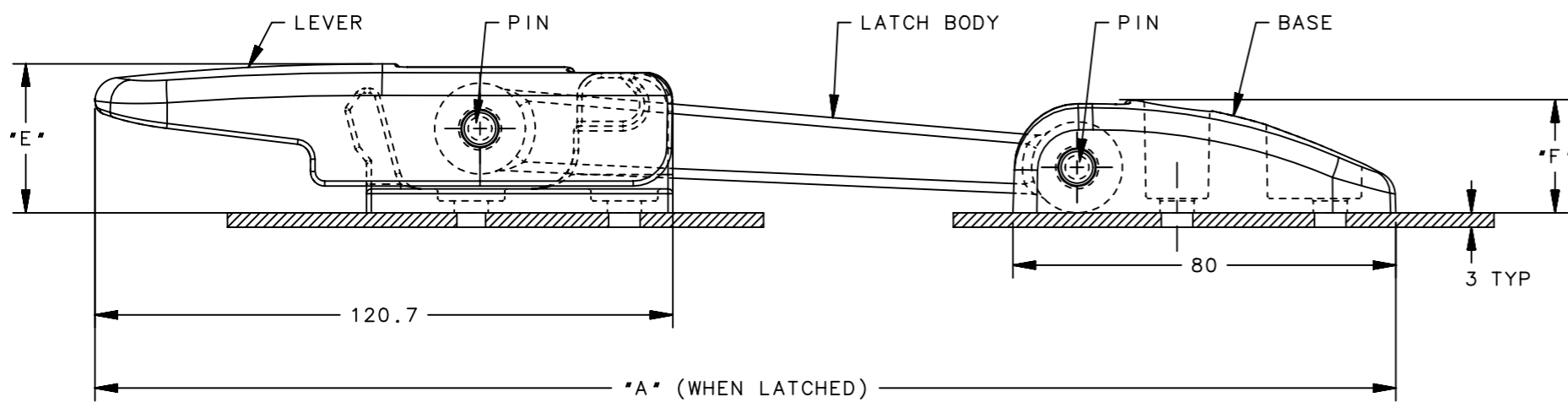
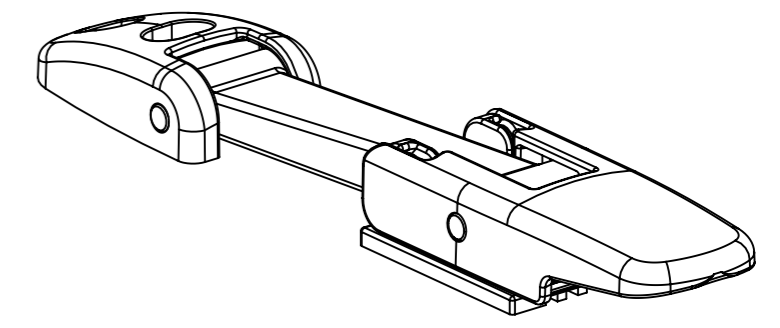
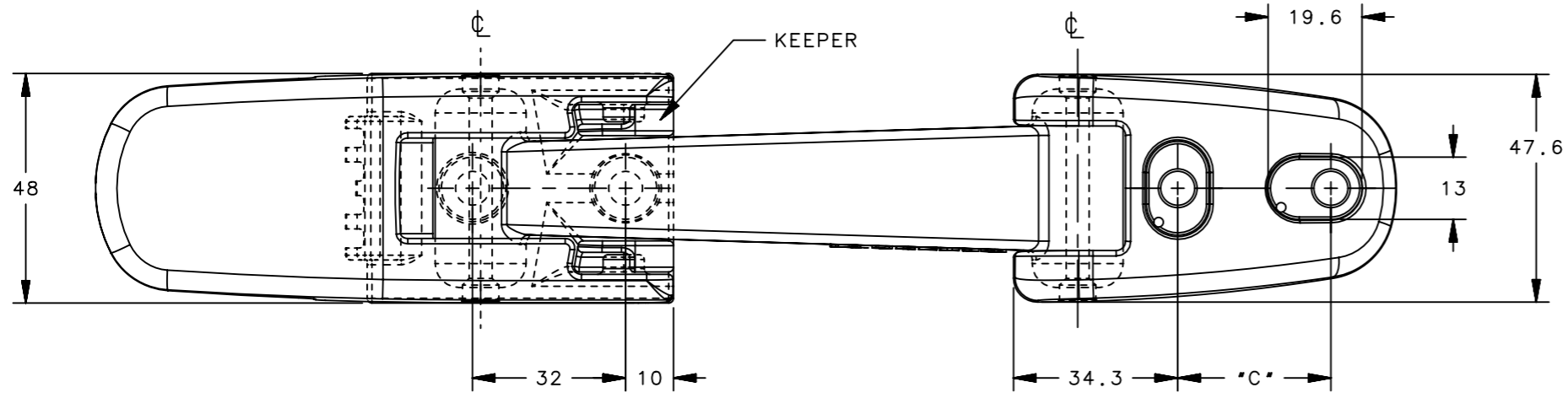


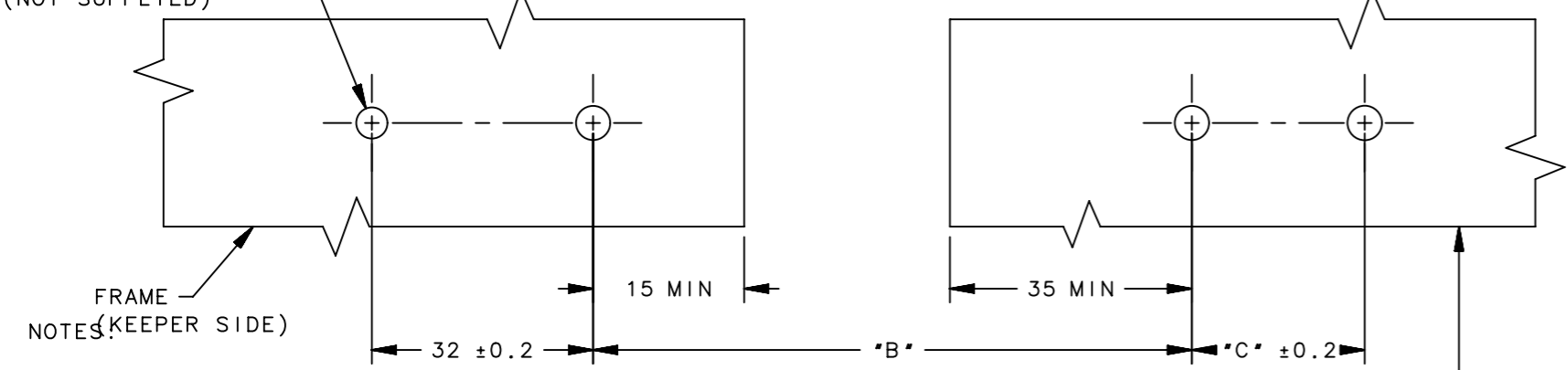
REVISION HISTORY			
REV	DATE	BY	DESCRIPTION
K	04SEP2019	DPZ/EHH	PRN: P2019-1949



LATCH OPERATION

(4X)  $\phi$  "D"  $\pm 0.1$   
 USE M5 OR M6 PAN OR  
 ROUND HEAD SCREWS  
 (NOT SUPPLIED)

PANEL PREPARATION



PART SHIPPED LAYER PACKAGED.  
 FOR INDIVIDUAL BAGGED ASSEMBLIES ADD -2 TO PART NUMBER. (EXAMPLE: 37-30-294-60-2)

MATERIAL AND FINISH:  
 LATCH BODY: EPDM RUBBER, BLACK  
 LEVER, KEEPER, AND BASE: GLASS-FILLED NYLON, BLACK  
 PIN: STAINLESS STEEL

DOOR  
 (BASE SIDE)

	THIRD ANGLE PROJECTION			<b>southco</b> <sup>®</sup> CONNECT • CREATE • INNOVATE	
	MILLIMETERS [IN]				
SURFACE AREA	TOLERANCES UNLESS OTHERWISE NOTED		DESCRIPTION		
VOLUME	ALL DIMENSIONS WITHOUT TOLERANCES ARE FOR REFERENCE ONLY.		37 DRAW LATCH		
PROPRIETARY ITEM	SIZE	SYSTEM	DWG NO.	FLEXIBLE • OVER CENTER • LEVER ASSIST	
EXCEPT FOR USES EXPRESSLY GRANTED IN WRITING, INFORMATION DISCLOSED HEREON IS CONFIDENTIAL AND ALL RIGHTS, PATENT AND OTHERWISE, ARE RESERVED BY SOUTHCO, INC.	A3	NX	J-37-29		
PER ASME Y14.5M-1994	DRAWN BY	DATE	SCALE	SHEET	
	DLH/JSS	11OCT1996	1:1	1 OF 1	

37-40-305-60	300	144±4	32	6.6	39.1	29
37-40-295-60	300	144±4	32	6.6	31.1	23.5
37-30-297-60	379	222±6	25.4	5.5	31.1	23.5
37-30-294-60	254	97±3	25.4	5.5	31.1	23.5
PART NUMBER	A	B	C	D	E	F