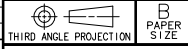


REV	DATE	DRAWN/CHKD	DESCRIPTION
A	13FEB2003	DLH/AJH	PRN: P2002-0874

PART NUMBER	SCREW PROJECTION		PANEL THICKNESS		B	L
	P-1	P-2	A, MIN	A, MAX		
47-10-5X2-YZ	.04	.24				
47-11-5X2-YZ	.11	.3				
47-12-5X2-YZ	.17	.36	.058	.125	.015	.070
47-13-5X2-YZ	.23	.43				
47-10-5X4-YZ	.11	.3				
47-11-5X4-YZ	.17	.36	.125	.189	.062	.135
47-12-5X4-YZ	.23	.43				
47-10-5X6-YZ	.17	.36				
47-11-5X6-YZ	.23	.43	.189	.250	.125	.197
47-10-5X8-YZ	.23	.43	.250	.312	.189	.260

INCHES  
ALL DIMENSIONS WITHOUT TOLERANCES ARE FOR REFERENCE ONLY.



**MATERIAL AND FINISH:**

KNOB: 6000 SERIES ALUMINUM  
SCREW: 400 SERIES STAINLESS STEEL, PASSIVATED; OR HARDENED CARBON STEEL, ZINC PLATE, CHROMATE PLUS SEALER (SEE "Z" TABLE) (NOTE: KNOB AND TOP OF SCREW AVAILABLE WITH POWDER COATING; SEE "Y" TABLE)  
FERRULE: 6000 SERIES ALUMINUM, NATURAL  
SPRING: 300 SERIES STAINLESS STEEL, PASSIVATED

"Z" KNOB TYPE AND SCREW MATERIAL

KNOB	SCREW MATERIAL	RECESS	
		SLOTTED PHILLIPS	TORX® TORX/SLOT PHILLIPS/SLOT
KNURLED	STAINLESS STEEL	0	N/A
SMOOTH	STAINLESS STEEL	1	N/A
KNURLED	STEEL	4	0
SMOOTH	STEEL	5	1

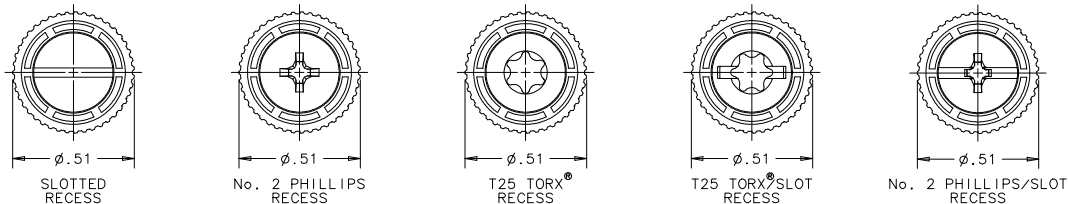
**\*X\* SCREW RECESS**

- 0 - SLOTTED
- 2 - No. 2 PHILLIPS
- 4 - T25 TORX®
- 6 - T25 TORX®/SLOT COMBINATION
- 8 - No. 2 PHILLIPS/SLOT COMBINATION

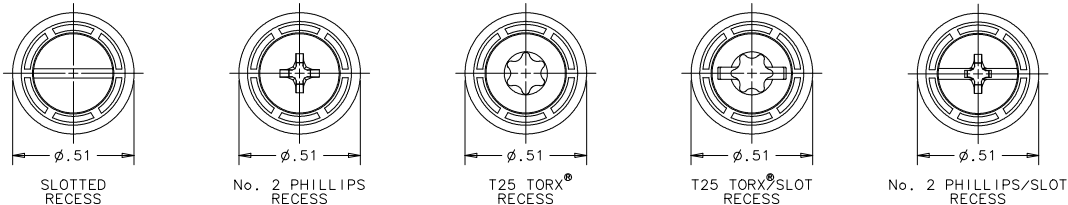
**\*Y\* FINISH ON KNOB & SCREW HEAD**

- 1 - BRIGHT
- 4 - CUSTOM COLOR. SEE J-47-0-3 FOR ADDITIONAL SUFFIX
- 5 - BLACK POWDER COATED

**KNURLED KNOBS**

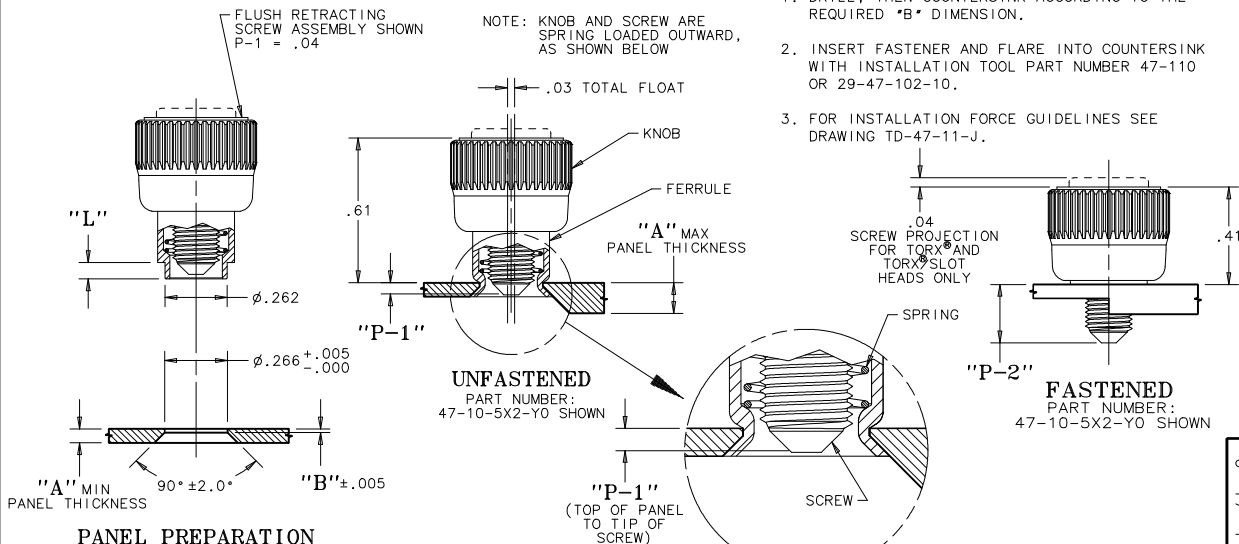


**SMOOTH KNOBS**



**TO INSTALL FASTENER:**

1. DRILL, THEN COUNTERSINK ACCORDING TO THE REQUIRED "B" DIMENSION.
2. INSERT FASTENER AND FLARE INTO COUNTERSINK WITH INSTALLATION TOOL PART NUMBER 47-110 OR 29-47-102-10.
3. FOR INSTALLATION FORCE GUIDELINES SEE DRAWING TD-47-11-J.



**PANEL PREPARATION**

PART NUMBER:  
47-10-5X2-YO SHOWN

SCALE: 4:1

TORX® IS A REGISTERED TRADEMARK OF THE CAMCAR DIVISION OF TEXTRON, INC.

DRAWING NUMBER  
J-47-1-1032