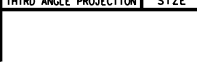


REV	DATE	DRAWN/CHKD	DESCRIPTION

PART NUMBER	SCREW PROJECTION		PANEL THICKNESS		B	L
	P-1	P-2	A, MIN	A, MAX		
47-10-2X2-YZ	.04	.24	.058	.125	.015	.070
47-11-2X2-YZ	.11	.3				
47-12-2X2-YZ	.17	.36				
47-13-2X2-YZ	.23	.43				
47-10-2X4-YZ	.11	.3	.125	.189	.062	.135
47-11-2X4-YZ	.17	.36				
47-12-2X4-YZ	.23	.43				
47-10-2X6-YZ	.17	.36				
47-11-2X6-YZ	.23	.43	.189	.250	.125	.197
47-10-2X8-YZ	.23	.43				

INCHES  
ALL DIMENSIONS WITHOUT TOLERANCES ARE FOR REFERENCE ONLY.



**MATERIAL AND FINISH:**  
 KNOB: 6000 SERIES ALUMINUM, NATURAL OR BLACK POWDER COATED  
 SCREW: 400 SERIES STAINLESS STEEL, PASSIVATED; OR HARDENED CARBON STEEL, ZINC PLATE, CHROMATE PLUS SEALER (SEE "Z" TABLE) (NOTE: KNOB AND TOP OF SCREW AVAILABLE WITH POWDER COATING; SEE "Y" TABLE)  
 FERRULE: 6000 SERIES ALUMINUM, NATURAL  
 SPRING: 300 SERIES STAINLESS STEEL, PASSIVATED

"Z" KNOB TYPE AND SCREW MATERIAL

**"X" SCREW RECESS**

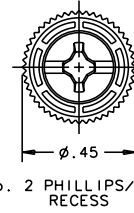
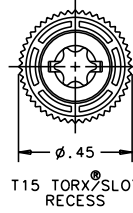
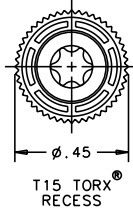
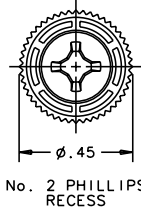
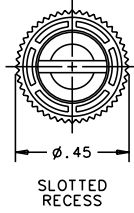
- 0 - SLOTTED
- 2 - No. 2 PHILLIPS
- 4 - T15 TORX
- 6 - T15 TORX/SLOT COMBINATION
- 8 - No. 2 PHILLIPS/SLOT COMBINATION

**"Y" FINISH ON KNOB & SCREW HEAD**

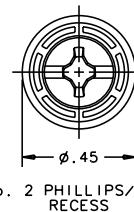
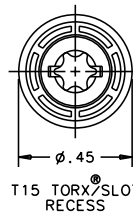
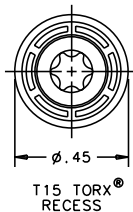
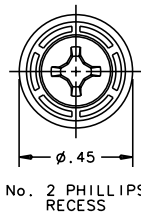
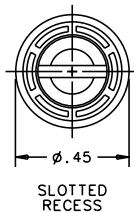
- 1 - BRIGHT
- 4 - CUSTOM COLOR, SEE J-47-0-3 FOR ADDITIONAL SUFFIX
- 5 - BLACK POWDER COATED

KNOB	SCREW MATERIAL	RECESS	
		SLOTTED TORX PHILLIPS/SLOT	TORX/SLOT
KNURLED	STAINLESS STEEL	0	N/A
SMOOTH	STAINLESS STEEL	1	N/A
KNURLED	STEEL	4	0
SMOOTH	STEEL	5	1

**KNURLED KNOBS**



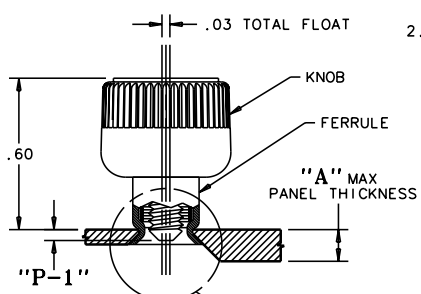
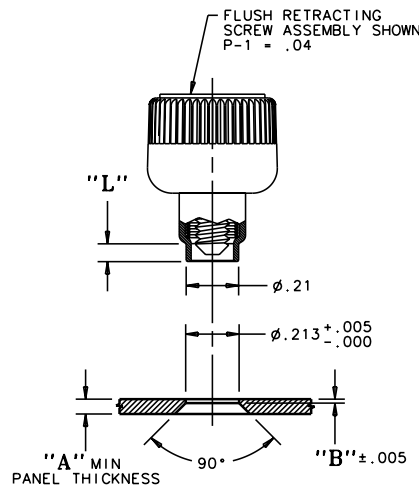
**SMOOTH KNOBS**



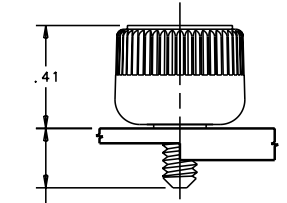
NOTE: KNOB AND SCREW ARE SPRING LOADED OUTWARD, AS SHOWN BELOW

**TO INSTALL FASTENER:**

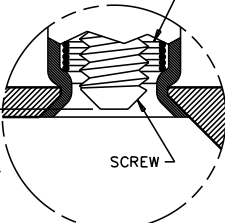
1. DRILL, THEN COUNTERSINK ACCORDING TO THE REQUIRED "B" DIMENSION.
2. INSERT FASTENER AND FLARE INTO COUNTERSINK WITH INSTALLATION TOOL PART NUMBER 47-106 OR 29-47-101-10.



**UNFASTENED**  
PART NUMBER: 47-10-2X2-Y0 SHOWN



**FASTENED**  
PART NUMBER: 47-10-2X2-Y0 SHOWN



SCALE: 4:1

**PANEL PREPARATION**  
PART NUMBER: 47-10-2X2-Y0 SHOWN