



N#51 FASTENER ASSEMBLIES

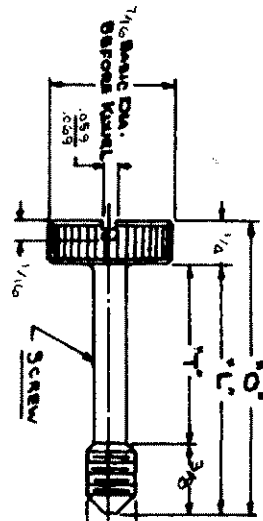
N# 8-32 THREAD 7/16 DIA. HEAD

DATE	DRAWN	QMSD	SCALE	DRAWING NUMBER
6-30-64	BC	TFS	N.T.D.	J-51-4

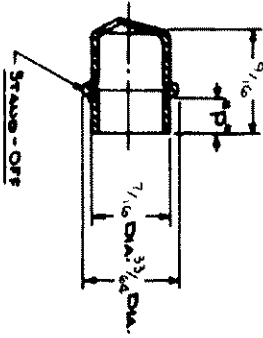
REV.	DATE	BY	CHKD.	REVISIONS
A	11/1/64	BC	TFS	UP DATED TO 1/2 S.I.C.C.
B	12/2/64	TFS	WST	DRG. N. WAS N3-51-4
C	5-17-77	TFS	ESh	PRN-120-14
D	4-9-82	ESh		PRN-8-1-77

REV.	DATE	BY	CHKD.	REVISIONS
E	20/04/2023	GJL/DMS		PRN:P2023-0743

R.S.	DATE	REP.
A	7/1/64	
B		
C		
D		



NOTE: PARTS SHIPPED UNASSEMBLED.



ITEM	MATERIAL	FINISH
SCREW	STAINLESS STEEL	PASSIVATE
STAND-OFF	STAINLESS STEEL	PASSIVATE

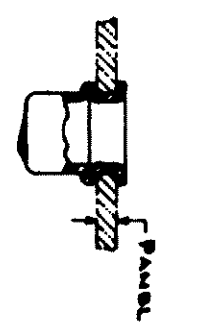
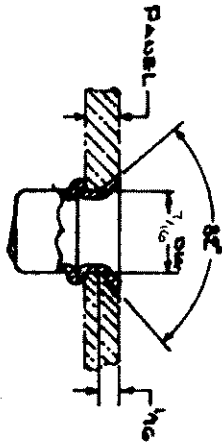
NOTE: THESE ASSEMBLIES ARE NON-REPAIRABLE ITEMS AND COMPONENTS ARE NOT AVAILABLE AS RE-PLACEMENT OR REPAIR PARTS.

ASSEMBLY PART NUMBERS		T	L	O	P
SLOTTED	UNSLOTTED				
51-17-709-24	51-27-709-24				
-909-	-809-	9/16	15/16	3/16	1/8
-909-	-710-	9/16	15/16	3/16	1/4
-810-	-810-	5/8	15/16	1/4	1/8
-910-	-910-	5/8	15/16	3/16	1/4
-711-	-711-	1/2	15/16	3/16	1/4
-811-	-811-	1/2	15/16	3/16	1/4
-911-	-911-	1/2	15/16	3/16	1/4
-712-	-712-	3/4	15/16	3/8	1/8
-812-	-812-	3/4	15/16	3/8	3/16
-912-	-912-	3/4	15/16	3/8	1/4
-713-	-713-	13/16	15/16	3/16	1/8
-813-	-813-	13/16	15/16	3/16	3/16
-913-	-913-	13/16	15/16	3/16	1/4
-714-	-714-	7/8	15/16	1/2	1/8
-814-	-814-	7/8	15/16	1/2	3/16
-914-	-914-	7/8	15/16	1/2	1/4
-715-	-715-	15/16	15/16	1/2	1/8
-815-	-815-	15/16	15/16	1/2	3/16
-915-	-915-	15/16	15/16	1/2	1/4
-716-	-716-	15/16	15/16	1/2	1/8
-816-	-816-	15/16	15/16	1/2	3/16
-916-	-916-	15/16	15/16	1/2	1/4

THESE ASSEMBLIES ARE NON-REPAIRABLE ITEMS AND COMPONENTS ARE NOT AVAILABLE AS RE-PLACEMENT OR REPAIR PARTS.

INSTALLATION METHOD "A"

INSTALLATION METHOD "B"



WHEN DIMENSION "P" IS	METHOD "A"	METHOD "B"
1/8	1/4 TO 3/4	1/16 TO 3/4
3/16	1/4 TO 3/4	3/8 TO 3/4
1/4	1/4 TO 3/4	5/8 TO 1 1/4