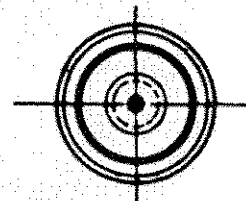
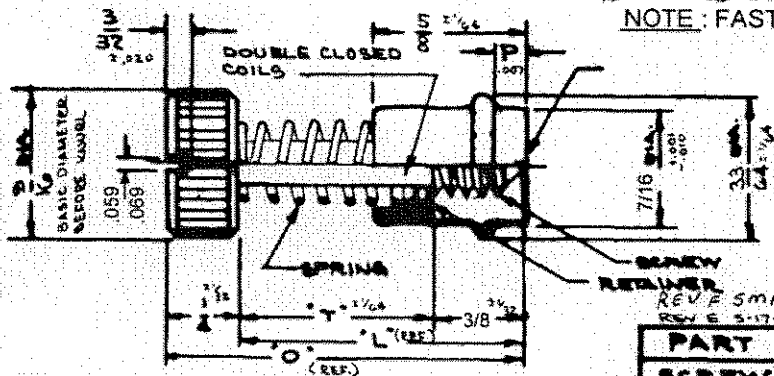


NOTE: FASTENER SHIPPED UNASSEMBLED



REV. P 5-MAR-93 JRR PRN: 5-1-03  
 REV. E 5-17-77 TOL PRN: 120-14 REV. F 4-18-82 JEL PRN: 2-1-91  
 REV. G 11-29-69 JEL PRN: 4-4-82 REV. B 4-16-62 TFS REVISED SPRING

PART	MATERIAL	FINISH
SCREW	STAINLESS STEEL	PASSIVATE
STAND-OFF	STAINLESS STEEL	PASSIVATE
RETAINER	STAINLESS STEEL	PASSIVATE
SPRING	STAINLESS STEEL	PASSIVATE

PROPRIETARY ITEM—EXCEPT FOR USES EXPRESSLY GRANTED IN WRITING, INFORMATION DISCLOSED HEREIN IS CONFIDENTIAL AND ALL RIGHTS, PATENT AND OTHERWISE, ARE RESERVED BY SOUTHCO, INC.

REV	DATE	BY	DESCRIPTION
G	05MAY2023	GJL/DMS	PRN:P2023-0826

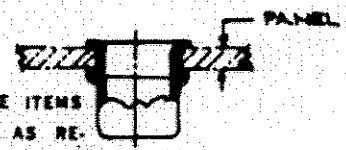
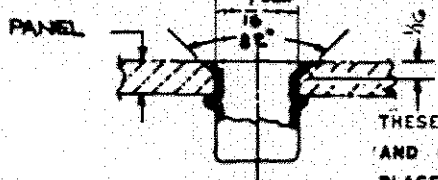
ASSEMBLY PART NUMBERS

SLOTTED		UNBLOTTED		T	L	O	P
1/4-20 UNC-2A	1/4-20 UNF-2A	1/4-20 UNC-2A	1/4-20 UNF-2A				
53-11-410-24	53-14-410-24	53-21-410-24	53-24-410-24	1/8			
53-11-510-24	53-14-510-24	53-21-510-24	53-24-510-24	3/16			
53-11-610-24	53-14-610-24	53-21-610-24	53-24-610-24	1/4			
53-11-411-24	53-14-411-24	53-21-411-24	53-24-411-24	1/8			
53-11-511-24	53-14-511-24	53-21-511-24	53-24-511-24	3/16			
53-11-611-24	53-14-611-24	53-21-611-24	53-24-611-24	1/4			
	53-14-412-24	53-21-412-24	53-24-412-24	1/8			
53-11-512-24	53-14-512-24	53-21-512-24	53-24-512-24	3/16			
53-11-612-24	53-14-612-24	53-21-612-24	53-24-612-24	1/4			
	53-14-413-24	53-21-413-24	53-24-413-24	1/8			
	53-14-513-24	53-21-513-24	53-24-513-24	3/16			
53-11-613-24	53-14-613-24	53-21-613-24	53-24-613-24	1/4			
53-11-414-24	53-14-414-24	53-21-414-24	53-24-414-24	1/8			
53-11-514-24	53-14-514-24	53-21-514-24	53-24-514-24	3/16			
	53-14-614-24	53-21-614-24	53-24-614-24	1/4			
53-11-415-24	53-14-415-24	53-21-415-24	53-24-415-24	1/8			
53-11-515-24	53-14-515-24	53-21-515-24	53-24-515-24	3/16			
53-11-615-24	53-14-615-24	53-21-615-24	53-24-615-24	1/4			
53-11-416-24	53-14-416-24	53-21-416-24	53-24-416-24	1/8			
53-11-516-24	53-14-516-24	53-21-516-24	53-24-516-24	3/16			
53-11-616-24	53-14-616-24	53-21-616-24	53-24-616-24	1/4			

INSTALLATION METHOD 'A'

INSTALLATION METHOD 'B'

FOR FASTENER INSTALLATION SEE DWG. J-53-1



THESE ASSEMBLIES ARE NON-REPAIRABLE ITEMS AND COMPONENTS ARE NOT AVAILABLE AS REPLACEMENT OR REPAIR PARTS.

WHEN DIMENSION 'P' IS:	PANEL RANGE IS:	
	METHOD 'A'	METHOD 'B'
1/8	7/64 TO 9/64	1/16 TO 5/64
3/16	11/64 TO 13/64	3/32 TO 9/64
1/4	15/64 TO 17/64	5/32 TO 13/64

SOUTHCO N° 53 FASTENER ASSEMBLIES 1/4-20 & 1/4-28 THREADS 3/16 DIA. HEAD

SOUTHCO

REV	DATE	BY	DESCRIPTION
A			
B			
C			
D			