

DRAWING NUMBER  
J-53-8-26

SCALE  
N.T.S.

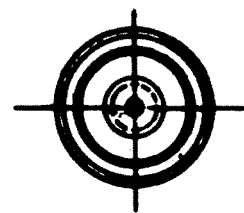
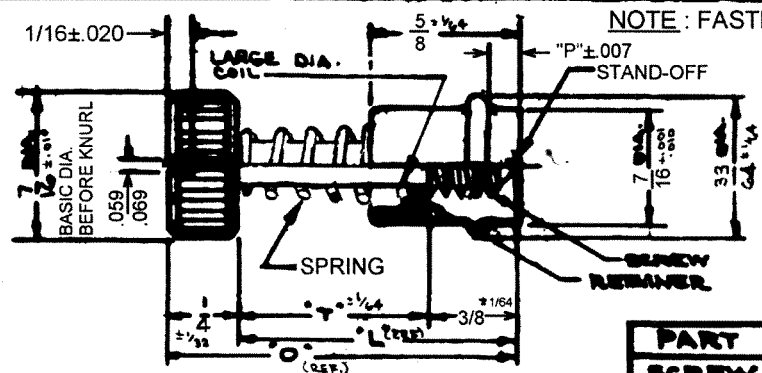
CHKD  
K.L.H.

DATE  
4-11-90

SOUTHCO No.53 FASTENER ASSEMBLIES  
10-24 & 10-32 THREADS 7/16 DIA. HEAD

SOUTHCO

DRAWING NUMBER  
J-53-8-26



**NOTE:**  
FOR PASSIVATED SCREW AND STAND-OFF CHANGE THE -26 TO -24.

PART	MATERIAL	FINISH
SCREW	STAINLESS STEEL	BLACK ORGANIC COATING
STAND-OFF	STAINLESS STEEL	BLACK ORGANIC COATING
RETAINER	STAINLESS STEEL	PASSIVATE
SPRING	STAINLESS STEEL	PASSIVATE

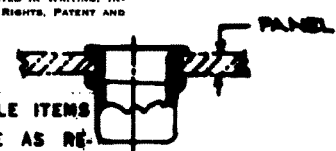
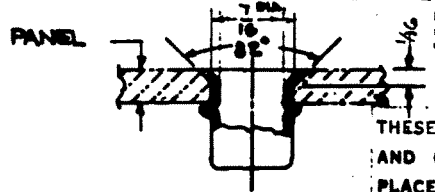
**ASSEMBLY PART NUMBERS**

SLOTTED				UNSLOTTED				T	L	O	P
10-24 UNC-2A		10-32 UNF-2A		10-24 UNC-2A		10-32 UNF-2A					
53-13-709-26	53-16-709-26	53-23-709-26	53-26-709-26	9/16	15/16	13/16	1/8				
53-13-809-26	53-16-809-26	53-23-809-26	53-26-809-26	5/8	1 1/16	1 1/4	3/16				
53-13-909-26	53-16-909-26	53-23-909-26	53-26-909-26	3/4	1 1/8	1 3/8	1/4				
53-13-710-26	53-16-710-26	53-23-710-26	53-26-710-26	7/8	1 1/4	1 7/8	1/8				
53-13-810-26	53-16-810-26	53-23-810-26	53-26-810-26	15/16	1 5/16	1 7/16	3/16				
53-13-910-26	53-16-910-26	53-23-910-26	53-26-910-26	1 1/8	1 3/8	1 5/8	1/4				
53-13-711-26	53-16-711-26	53-23-711-26	53-26-711-26	1 1/4	1 5/8	1 7/8	1/8				
53-13-811-26	53-16-811-26	53-23-811-26	53-26-811-26	1 3/8	1 7/8	1 9/8	3/16				
53-13-911-26	53-16-911-26	53-23-911-26	53-26-911-26	1 5/8	1 9/8	1 11/8	1/4				
53-13-712-26	53-16-712-26	53-23-712-26	53-26-712-26	1 7/8	1 11/8	1 13/8	1/8				
53-13-812-26	53-16-812-26	53-23-812-26	53-26-812-26	1 9/8	1 13/8	1 15/8	3/16				
53-13-912-26	53-16-912-26	53-23-912-26	53-26-912-26	1 11/8	1 15/8	1 17/8	1/4				
53-13-713-26	53-16-713-26	53-23-713-26	53-26-713-26	1 3/4	1 7/8	1 9/8	1/8				
53-13-813-26	53-16-813-26	53-23-813-26	53-26-813-26	1 5/8	1 9/8	1 11/8	3/16				
53-13-913-26	53-16-913-26	53-23-913-26	53-26-913-26	1 7/8	1 11/8	1 13/8	1/4				
53-13-714-26	53-16-714-26	53-23-714-26	53-26-714-26	1 9/8	1 13/8	1 15/8	1/8				
53-13-814-26	53-16-814-26	53-23-814-26	53-26-814-26	1 11/8	1 15/8	1 17/8	3/16				
53-13-914-26	53-16-914-26	53-23-914-26	53-26-914-26	1 13/8	1 17/8	1 19/8	1/4				
53-13-715-26	53-16-715-26	53-23-715-26	53-26-715-26	1 5/8	1 13/8	1 15/8	1/8				
53-13-815-26	53-16-815-26	53-23-815-26	53-26-815-26	1 7/8	1 15/8	1 17/8	3/16				
53-13-915-26	53-16-915-26	53-23-915-26	53-26-915-26	1 9/8	1 17/8	1 19/8	1/4				
53-13-716-26	53-16-716-26	53-23-716-26	53-26-716-26	1 11/8	1 19/8	1 21/8	1/8				
53-13-816-26	53-16-816-26	53-23-816-26	53-26-816-26	1 13/8	1 21/8	1 23/8	3/16				
53-13-916-26	53-16-916-26	53-23-916-26	53-26-916-26	1 15/8	1 23/8	1 25/8	1/4				

**INSTALLATION METHOD 'A'**

**INSTALLATION METHOD 'B'**

FOR FASTENER INSTALLATION SEE DWG. J-53-1



THESE ASSEMBLIES ARE NON-REPAIRABLE ITEMS AND COMPONENTS ARE NOT AVAILABLE AS REPLACEMENT OR REPAIR PARTS.

WHEN DIMENSION 'P' IS:	PANEL RANGE IS:	
	METHOD 'A'	METHOD 'B'
1/8	7/64 TO 9/64	1/16 TO 5/64
3/16	11/64 TO 13/64	3/32 TO 9/64
1/4	15/64 TO 17/64	5/32 TO 13/64

U.S. DATE	APP.
4	0
0	0
0	0