

DRAWING NUMBER
J-53-8

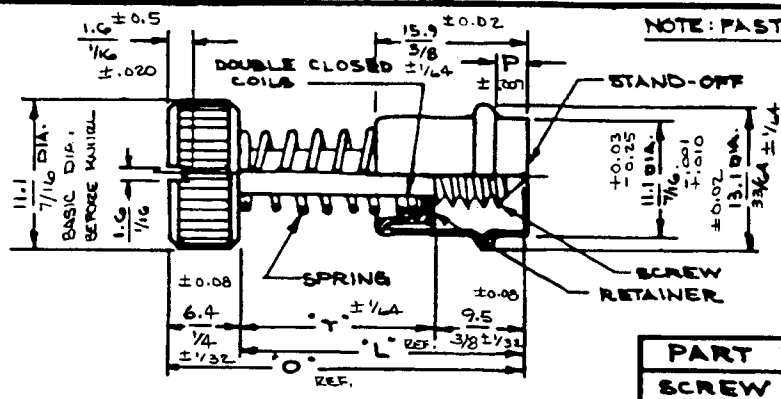
SCALE
N.T.S.

CHKD

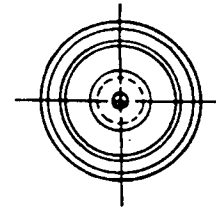
DRAWN
T.P.S.

DATE
3-21-10

SOUTHCO NO 53 FASTENER ASSEMBLIES
10-24 AND 10-32 THREADS 7/16 DIA. HEAD



NOTE: PASTER SHIPPED UNASSEMBLED



DRAWING NUMBER
J-53-8

PROPRIETARY ITEM—EXCEPT FOR USES EXPRESSLY GRANTED IN WRITING, INFORMATION DISCLOSED HEREON IS CONFIDENTIAL AND ALL RIGHTS, PATENT AND OTHERWISE, ARE RESERVED BY SOUTHCO, INC.

REV B 5MAR13 TRB PAV: S-1-03
REV A 3-12-88 JAE ECONOMY FOR CLARITY.

REV	DATE	BY	DESCRIPTION	MILLIMETER/INCH	MILLIMETER/INCH
C	24MAY2023	GJL/DMS	PRN:P2023-0863		

PART	MATERIAL	FINISH
SCREW	STAINLESS STEEL	PASSIVATE
STAND-OFF	STAINLESS STEEL	PASSIVATE
RETAINER	STAINLESS STEEL	PASSIVATE
SPRING	STAINLESS STEEL	PASSIVATE

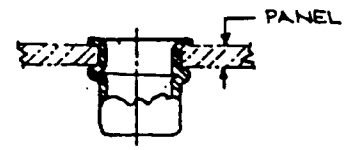
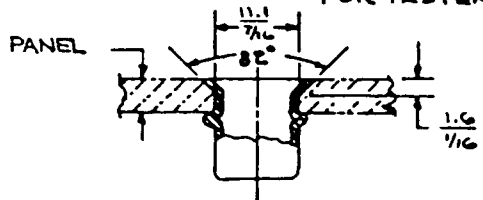
ASSEMBLY PART NUMBERS

SLOTTED		UNSLOTTED		T	L	O	P
10-24 UNC - 2A	10-32 UNF - 2A	10-24 UNC - 2A	10-32 UNF - 2A				
53-13 - 710-24	53-16-710-24	53-23 - 710-24	53-26-710-24	15.9	25.4	31.8	3/2
↑ - 810 ↑	↑ 810 ↑	↑ 810 ↑	↑ 810 ↑	5/8	1 1/8	1 1/4	1/8
↑ - 910 ↑	↑ 910 ↑	↑ 910 ↑	↑ 910 ↑				3/16
							1/4
↑ - 711 ↑	↑ 711 ↑	↑ 711 ↑	↑ 711 ↑				3/2
↑ - 811 ↑	↑ 811 ↑	↑ 811 ↑	↑ 811 ↑	17.4	27.0	33.3	1/8
↑ - 911 ↑	↑ 911 ↑	↑ 911 ↑	↑ 911 ↑	11/16	1 1/16	1 5/16	3/16
							1/2
↑ - 712 ↑	↑ 712 ↑	↑ 712 ↑	↑ 712 ↑				3/2
↑ - 812 ↑	↑ 812 ↑	↑ 812 ↑	↑ 812 ↑	19.1	28.16	34.9	1/8
↑ - 912 ↑	↑ 912 ↑	↑ 912 ↑	↑ 912 ↑	3/4	1 1/8	1 3/8	3/16
							1/2
↑ - 713 ↑	↑ 713 ↑	↑ 713 ↑	↑ 713 ↑				3/2
↑ - 813 ↑	↑ 813 ↑	↑ 813 ↑	↑ 813 ↑	20.6	30.1	36.5	1/8
↑ - 913 ↑	↑ 913 ↑	↑ 913 ↑	↑ 913 ↑	13/16	1 3/16	1 7/16	3/16
							1/2
↑ - 714 ↑	↑ 714 ↑	↑ 714 ↑	↑ 714 ↑				3/2
↑ - 814 ↑	↑ 814 ↑	↑ 814 ↑	↑ 814 ↑	22.2	31.8	38.1	1/8
↑ - 914 ↑	↑ 914 ↑	↑ 914 ↑	↑ 914 ↑	7/8	1 1/4	1 1/2	3/16
							1/2
↑ - 715 ↑	↑ 715 ↑	↑ 715 ↑	↑ 715 ↑				3/2
↑ - 815 ↑	↑ 815 ↑	↑ 815 ↑	↑ 815 ↑	23.8	33.3	39.7	1/8
↑ - 915 ↑	↑ 915 ↑	↑ 915 ↑	↑ 915 ↑	15/16	1 5/16	1 9/16	3/16
							1/2
↑ - 716 ↑	↑ 716 ↑	↑ 716 ↑	↑ 716 ↑				3/2
↑ - 816 ↑	↑ 816 ↑	↑ 816 ↑	↑ 816 ↑	25.4	34.9	41.3	1/8
							3/16
53-13 - 916-24	53-16-916-24	53-23 - 916-24	53-26-916-24	1 1/8	1 3/8	1 5/8	1/2

INSTALLATION METHOD "A"

INSTALLATION METHOD "B"

FOR FASTENER INSTALLATION SEE DWG. J-53-1



WHEN DIMENSION "P" IS:	PANEL RANGE IS:	
	METHOD "A"	METHOD "B"
3/2	2.8 - 3.6	1.6 - 2.0
7/8	7/64 - 9/64	7/16 - 3/64
4.8	4.4 - 5.2	2.4 - 3.6
3/16	11/64 - 13/64	3/32 - 9/64
6.3	4.4 - 6.7	4.0 - 5.3
7/4	13/64 - 17/64	5/32 - 13/64