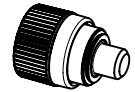


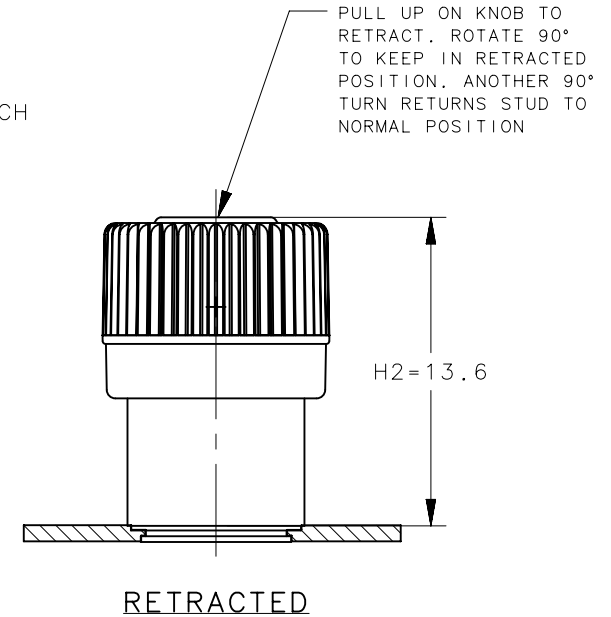
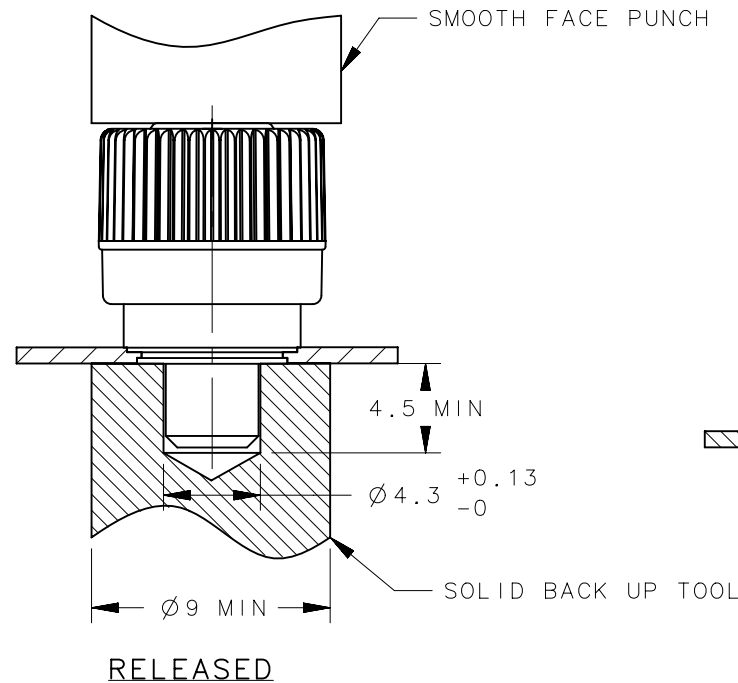
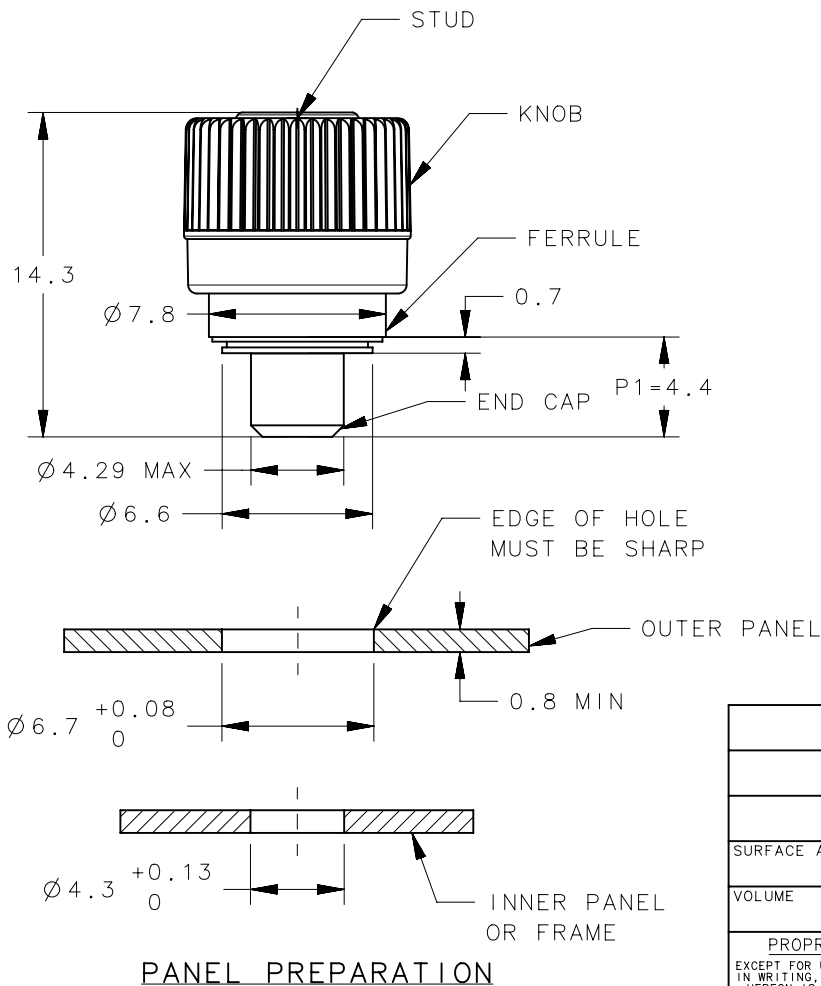
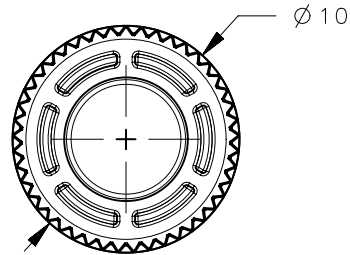
REVISION HISTORY			
REV	DATE	BY	DESCRIPTION
C	03NOV2015	MAL/JQ	PRN: P2015-2208

NOTES:

- A. INSTALLATION INSTRUCTIONS:
 1. DRILL OR PUNCH INSTALLATION HOLE.
 2. PLACE FERRULE INTO INSTALLATION HOLE.
 3. PROVIDE SOLID BACK-UPBEHIND HOLE WITH CLEARANCE HOLE FOR STUD.
 4. PRESS ON HEAD OF STUD UNTIL SHOULDER OF FERRULE IS FIRMLY AGAINST OUTER PANEL.
 RECOMMENDED LOAD OF 8,000 N FOR STEEL, Rb<60. RECOMMENDED LOAD OF 5,000N FOR 5052-H32 ALUMINUM.
 5. PUNCH CANNOT TOUCH PLASTIC DURING INSTALLATION.
- B. MATERIAL AND FINISH:
 FERRULE AND END CAP: STEEL, ZINC PLATE PLUS SEALER.
 SPRING: STAINLESS STEEL, PASSIVATED(NOT SHOWN)
 STUD: HARDENED STEEL, ZINC PLATE PLUS SEALER.
 KNOB: PC/ABS UL94 V0 RATED, FLAME RETARDANT;
 TRIARYLPHOSPHATE (DOES NOT CONTAIN BROMINATED, CHLORINATED, OR HALOGENATED ADDITIVES).
- C. PARTS SHIPPED BULK.
 D. RoHS COMPLIANT.



SCALE 1:1



"EEE" KNOB COLOR
 -000 BLACK
 SEE J-47-0-3 FOR
 DETAILS

56-311-EEE
PART NUMBER

	THIRD ANGLE PROJECTION			southco [®] CONNECT • CREATE • INNOVATE	
	MILLIMETERS [IN]				
SURFACE AREA	TOLERANCES UNLESS OTHERWISE NOTED	DESCRIPTION		56 MINI PLUNGER	
VOLUME	ALL DIMENSIONS WITHOUT TOLERANCES ARE FOR REFERENCE ONLY.	PRESS-IN, 4C KNOB OVERMOLD, STAY OPEN		DWG NO. J-56-311-EEE	
PROPRIETARY ITEM	PER ASME Y14.5M-1994	SIZE A4	SYSTEM NX	DRAWN BY MAL/JQ	
EXCEPT FOR USES EXPRESSLY GRANTED IN WRITING, INFORMATION DISCLOSED HEREON IS CONFIDENTIAL AND ALL RIGHTS, PATENT AND OTHERWISE, ARE RESERVED BY SOUTHCO, INC.				DATE 06JUL2015	SHEET 1 OF 1