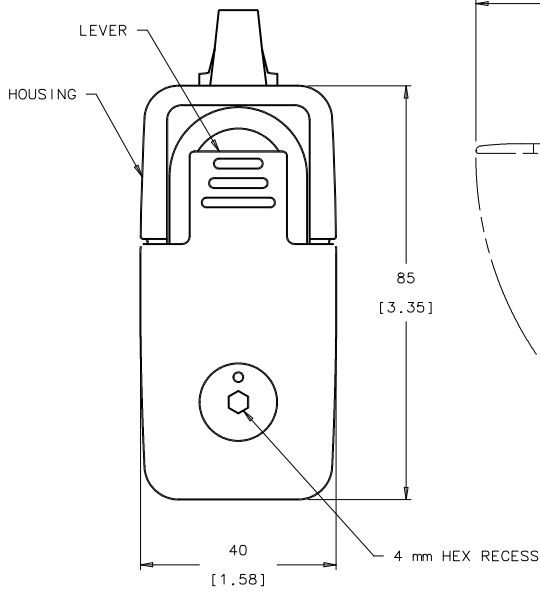


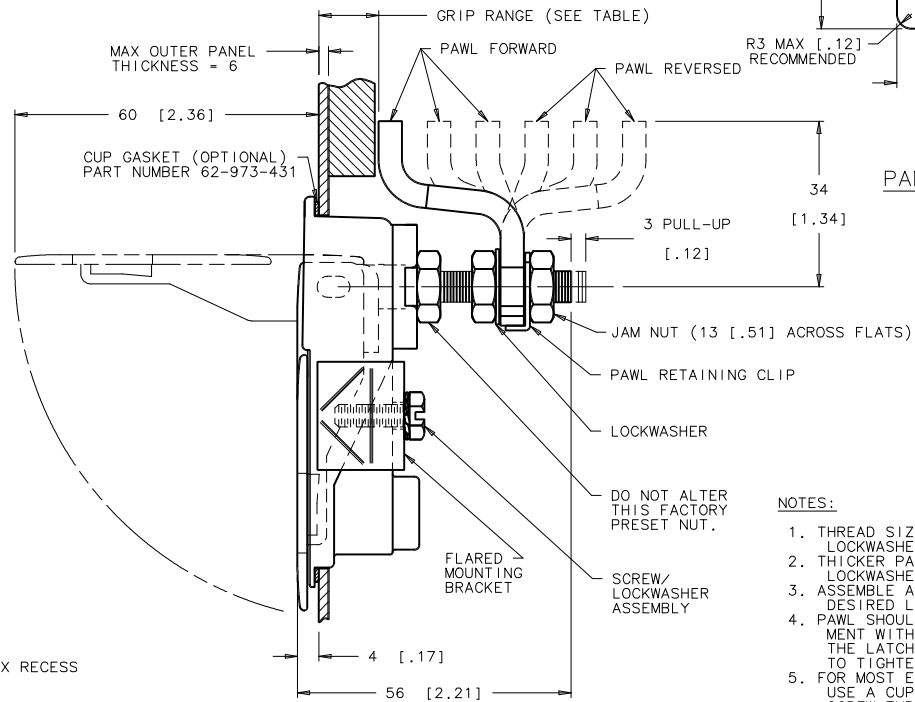
REV.	DATE	DRAWN	REVISION
A	22JUN2000	VNI	PRN: PK-31
B	07OCT2004	MJR/MDY	PRN: P2004-1144
C	18JAN2012	CMS/JCK	PRN: P2012-0085
D	22JUN2020	CMS/CLB	PRN: P2020-1165

ALL DIMENSIONS ARE IN MILLIMETERS. ALL DIMENSIONS WITH TOLERANCES ARE REFERENCE.



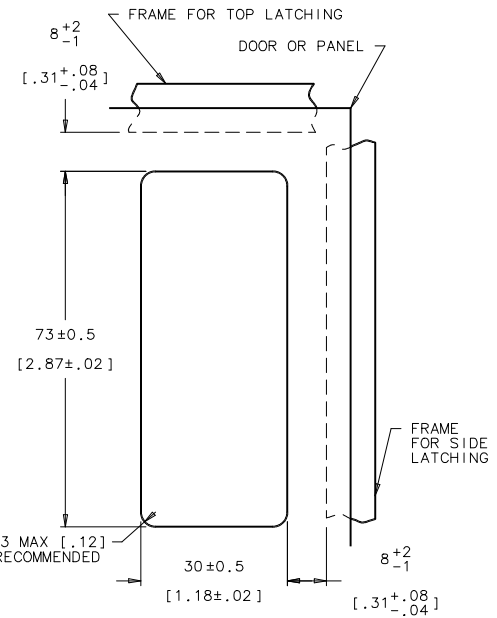
GRIP RANGE		INDIVIDUALLY PACKAGED ASSEMBLY PART NUMBER	
MIN-MAX	MIN-MAX	TEXTURED CHROME	BLACK POWDER COATED
6-16 [.24-.62]	56-66 [2.20-2.60]	62-420-101-2	62-420-151-2
16-26 [.62-1.02]	46-56 [1.81-2.20]	62-420-201-2	62-420-251-2
26-36 [1.02-1.42]	36-46 [1.02-1.81]	62-420-301-2	62-420-351-2

GRIP RANGE		BULK LAYER PACKED ASSEMBLY PART NUMBER	
MIN-MAX	MIN-MAX	TEXTURED CHROME	BLACK POWDER COATED
6-16 [.24-.62]	56-66 [2.20-2.60]	62-420-101-3	62-420-151-3
16-26 [.62-1.02]	46-56 [1.81-2.20]	62-420-201-3	62-420-251-3
26-36 [1.02-1.42]	36-46 [1.02-1.81]	62-420-301-3	62-420-351-3



MATERIAL AND FINISH

LEVER, HOUSING AND LOCK PLUG: DIE CAST ZINC, SEE TABLE.
 SHAFT: STEEL, ZINC ALLOY PLATE BRIGHT CHROMATE. PLUS SEALER OR WITH BLACK ORGANIC COATING.
 SHAFT O-RING: SYNTHETIC RUBBER, NATURAL.
 CAM: 1010 STEEL, ZINC ALLOY PLATE BRIGHT CHROMATE. PLUS SEALER OR WITH BLACK ORGANIC COATING.
 PIN: 303 STAINLESS STEEL, PASSIVATED.
 WASHER: 1010 STEEL, ZINC PLATED BRIGHT OR BLACK OXIDE.
 SPRINGS: 302 STAINLESS STEEL, PASIVATED.
 BEARING WASHER, PAWL, PAWL RETAINING CLIP AND BRACKET: 1010 STEEL, ZINC ALLOY PLATE BRIGHT CHROMATE, PLUS SEALER.
 LOCKWASHER: SPRING STEEL, ZINC ALLOY PLTE BRIGHT CHROMATE, PLUS SEALER.
 NUTS AND SCREW/LOCKWASHER ASSEMBLY: LOW CARBON STEEL, ZINC ALLOY PLATE BRIGHT CHROMATE, PLUS SEALER.
 CUP GASKET: SYNTHETIC RUBBER, NATURAL.
 LOCK PLATE: STAINLESS STEEL, PASSIVATED OR BLACK OXIDE.



PANEL PREPARATION

NOTES:

1. THREAD SIZE OF SHAFT IS M8 AND THE SCREW/ LOCKWASHER ASSEMBLY IS M5.
2. THICKER PANELS REQUIRE A LONGER SCREW/ LOCKWASHER COMBINATION (NOT SUPPLIED).
3. ASSEMBLE AS SHOWN AND ROTATE PAWL TO THE DESIRED LATCHING POSITION.
4. PAWL SHOULD BE ADJUSTED TO GRIP MEASURE- MENT WITH THE DOOR OPEN AND THE LEVER IN THE LATCHED POSITION. USE TWO WRENCHES TO TIGHTEN JAM NUTS.
5. FOR MOST EFFECTIVE ENVIRONMENTAL SEALING, USE A CUP GASKET AND SEAL THE MOUNTING SCREW THREADS.

DO NOT ALTER THIS FACTORY PRESET NUT.