

NOTES:

A. MATERIAL AND FINISH:

1. BASIC LEVER AND HOUSING: DIE CAST ZINC, SEE TABLE.
2. SHAFT: STEEL, ZINC ALLOY PLATE BRIGHT CHROMATE, PLUS SEALER OR WITH BLACK ORGANIC COATING.
3. SHAFT O-RING: SYNTHETIC RUBBER, NATURAL.
4. CAM: 1010 STEEL, ZINC ALLOY PLATE BRIGHT CHROMATE, PLUS SEALER OR WITH BLACK ORGANIC COATING.
5. PIN: 303 STAINLESS STEEL, PASSIVATED.
6. WASHER: 1010 STEEL, ZINC PLATED BRIGHT OR BLACK OXIDE.
7. SPRINGS: 302 STAINLESS STEEL, PASSIVATED.
8. BEARING WASHER, PAWL, PAWL RETAINING CLIP & BRACKET: 1010 STEEL, ZINC ALLOY PLATE BRIGHT CHROMATE, PLUS SEALER.
9. LOCKWASHER: SPRING STEEL, ZINC ALLOY PLATE BRIGHT CHROMATE, PLUS SEALER.
10. NUTS AND MOUNTING SCREW: LOW CARBON STEEL, ZINC ALLOY PLATE BRIGHT CHROMATE, PLUS SEALER.
11. HOUSING GASKET: SYNTHETIC RUBBER, NATURAL.

B. THREAD SIZE OF SHAFT IS M8 AND THE MOUNTING SCREW IS M5.

C. THICKER PANELS REQUIRE A LONGER MOUNTING SCREW (NOT SUPPLIED).

D. ASSEMBLE AS SHOWN AND ROTATE PAWL TO THE DESIRED LATCHING POSITION.

E. PAWL SHOULD BE ADJUSTED TO *GRIP* MEASUREMENT WITH THE DOOR OPEN AND THE LEVER IN THE *LATCHED* POSITION. USE TWO WRENCHES TO TIGHTEN JAM NUTS.

F. FOR MOST EFFECTIVE ENVIRONMENTAL SEALING, USE A HOUSING GASKET AND SEAL THE MOUNTING SCREW THREADS.



PROPRIETARY ITEM - EXCEPT FOR USES EXPRESSLY GRANTED IN WRITING INFORMATION DISCLOSED HEREON IS CONFIDENTIAL AND ALL RIGHTS PATENT AND OTHERWISE ARE RESERVED BY SOUTHCO, INC.

No. 62 40-SERIES
BASIC LATCH ASSEMBLY

DATE	DRAWN	CHKD	SCALE	DRAWING NUMBER
08JUN94	BMC		1:1	J-62-48

REV	DATE	DRAWN/CHKD	DESCRIPTION
G	07JUL98	VLL/JGK	PRN: 62-609
H	18JUL2003	VNI/DLH	PRN: P2003-0603
I	07OCT2004	MJR/MDY	PRN: P2004-1144
J	16NOV2006	MJS/MDY	PRN: P2006-1602
K	04FEB2011	MJS	PRN: P2010-0617
L	18JAN2012	CMS/JCK	PRN: P2012-0085
M	15JUN2020	CMS/CLB	PRN: P2020-1132

MILLIMETERS

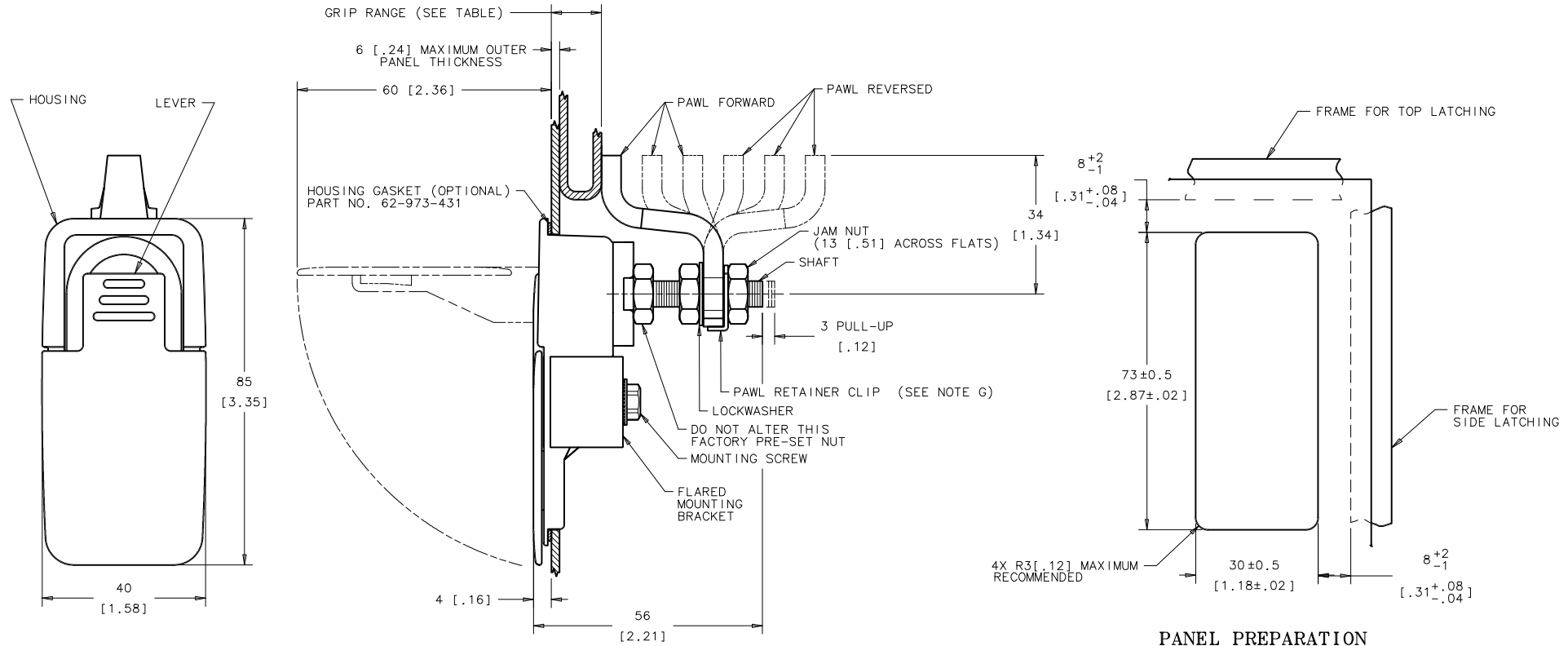
ALL DIMENSIONS WITHOUT TOLERANCES ARE FOR REFERENCE ONLY.

THIRD ANGLE PROJECTION

A3 PAPER SIZE

GRIP RANGE		INDIVIDUALLY PACKAGED ASSEMBLY PART NUMBER		
MIN - MAX	MIN - MAX	TEXTURED CHROME	POLISHED CHROME	BLACK POWDER COATED
6-16 [.24-.62]	56-66 [2.20-2.6]	62-40-101-2	62-40-111-2	62-40-151-2
16-26 [.62-1.02]	46-56 [1.81-2.20]	62-40-201-2	62-40-211-2	62-40-251-2
26-36 [1.02-1.42]	36-46 [1.02-1.81]	62-40-301-2	62-40-311-2	62-40-351-2

GRIP RANGE		BULK LAYER PACKED ASSEMBLY PART NUMBER		
MIN - MAX	MIN - MAX	TEXTURED CHROME	POLISHED CHROME	BLACK POWDER COATED
6-16 [.24-.62]	56-66 [2.20-2.6]	62-40-101-3	62-40-111-3	62-40-151-3
16-26 [.62-1.02]	46-56 [1.81-2.20]	62-40-201-3	62-40-211-3	62-40-251-3
26-36 [1.02-1.42]	36-46 [1.02-1.81]	62-40-301-3	62-40-311-3	62-40-351-3



PANEL PREPARATION