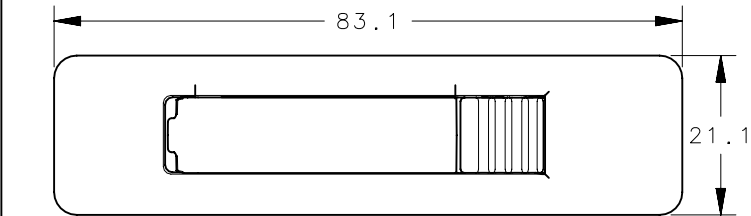


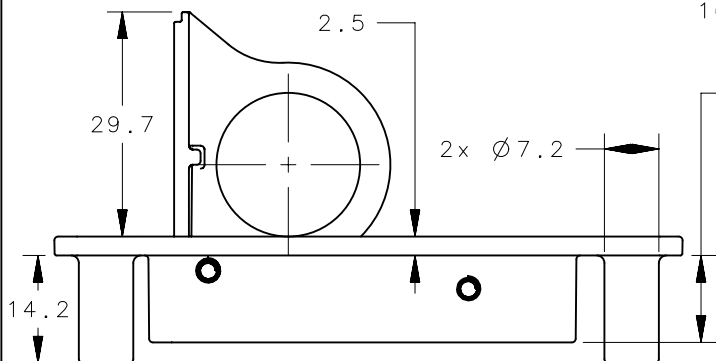
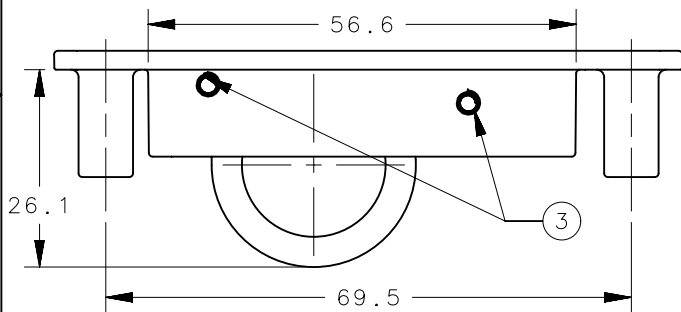
NOTES:

1. ALL COMPONENTS ARE RoHS COMPLIANT.
2. COSMETIC SPECIFICATIONS:
ALL POWDERCOATED SURFACES ARE TO CONFORM TO A CLASS "B" DESIGNATION AS DESCRIBED IN SOUTHCO COSMETIC SPECIFICATION: S-121-03 FOR POWDER COATING. ALL STAINLESS STEEL PARTS ARE TO CONFORM TO A CLASS "D" DESIGNATION AS DESCRIBED IN SOUTHCO COSMETIC SPECIFICATION: S-121-05 FOR STAINLESS STEEL PARTS.
3. MAXIMUM TORQUE ON MOUNTING SCREWS: 2.5 N-m.

REVISION HISTORY			
REV	DATE	BY	DESCRIPTION
B	17APR2015	RL/LC	PRN: P2015-0662

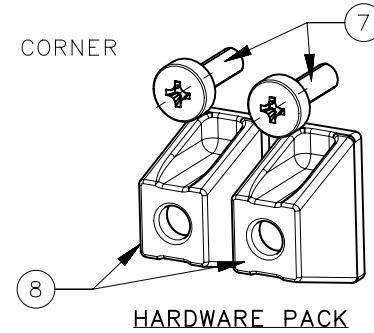
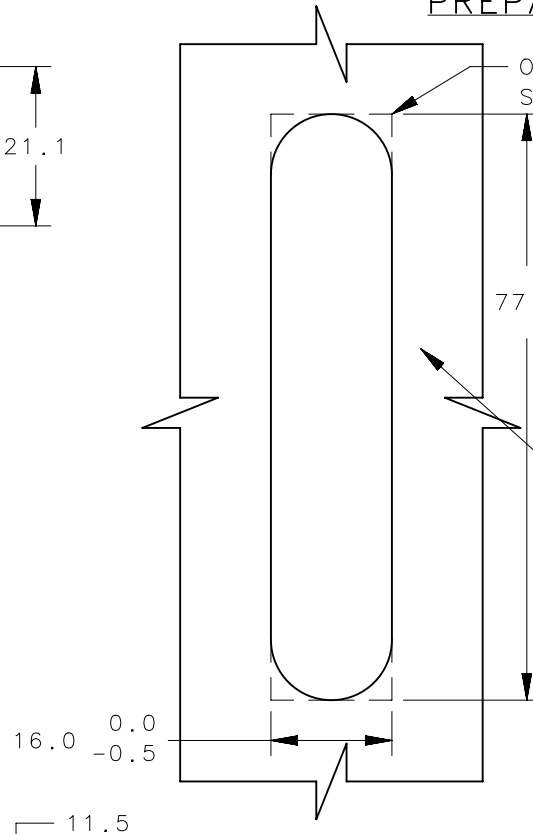


LATCH CLOSED

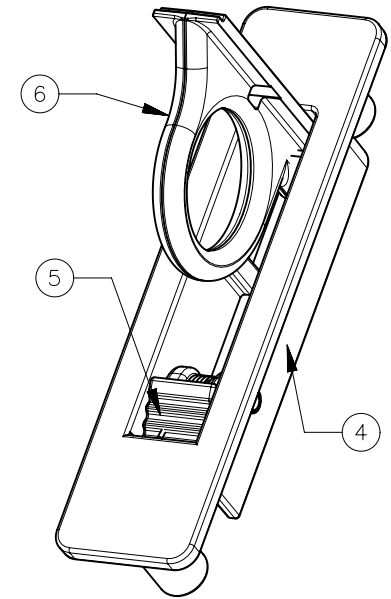


LATCH OPEN

PANEL PREPARATION



HARDWARE PACK



MAXIMUM RECOMMENDED PANEL THICKNESS WITH SUPPLIED SCREWS IS 6.4mm. LONGER SCREWS WILL BE NEEDED FOR INSTALLATION INTO THICKER PANELS.

8	-	2	#67 WIDE BUSHING	POM HOMOPOLYMER	BLACK
7	-	2	W4x0.7x16 SELF TAPPING SCREW	STEEL	ZINC NICKEL PLATING
6	-	1	PULL RING	ZAMAC 3	SILVER POWDERCOATING
5	-	1	LEVER	ZAMAC 3	SILVER POWDERCOATING
4	-	1	HOUSING	ZAMAC 3	SILVER POWDERCOATING
3	-	2	COILED PINS	STAINLESS	PASSIVATED
2	-	1	LEVER TORSION SPRING	STAINLESS	PASSIVATED
1	-	1	PULL RING TORSION SPRING	STAINLESS	PASSIVATED
-	67-14	-	PULL RING LATCH ASSY	-	-
NO.	PART NUMBER	QTY	TYPE OF COMPONENT	MATERIAL	FINISH

THIRD ANGLE PROJECTION	
MILLIMETERS [IN]	
SURFACE AREA	TOLERANCES UNLESS OTHERWISE NOTED
VOLUME	ALL DIMENSIONS WITHOUT TOLERANCES ARE FOR REFERENCE ONLY.
PROPRIETARY ITEM	PER ASME Y14.5M-1994
EXCEPT FOR USES EXPRESSLY GRANTED IN WRITING, INFORMATION DISCLOSED HEREON IS CONFIDENTIAL AND ALL RIGHTS, PATENT AND OTHERWISE, ARE RESERVED BY SOUTHCO, INC.	

 CONNECT • CREATE • INNOVATE		DESCRIPTION	
		PULL RING LATCH, STANDARD	
SIZE	SYSTEM	DWG NO.	
A4	NX	J-67-14	
DRAWN BY	DATE	SCALE	SHEET
RL/LC	27OCT2014	1:1	1 OF 1