

INSTALLATION INSTRUCTIONS

1. SLIP ESCUTCHEON PLATE & STOP WASHER OVER SHAFT & INSERT SHAFT & STOP PINS INTO HOLES INTO PANEL.
2. SLIP TAB WASHER OVER SHAFT, RUN NUT UP TO PANEL, THEN BACK OFF TO OBTAIN SMOOTH OPERATION & BEND TABS UP AGAINST FLATS OF SQUARE UNITS.
3. RUN SECOND NUT ONTO SHAFT, THEN SLIDE PAWL & ACTUATOR ON SHAFT (MAKE SURE EACH IS PROPERLY POSITIONED), AND THIRD NUT, THEN ADJUST TO CORRECT GRIP & TIGHTEN NUTS.

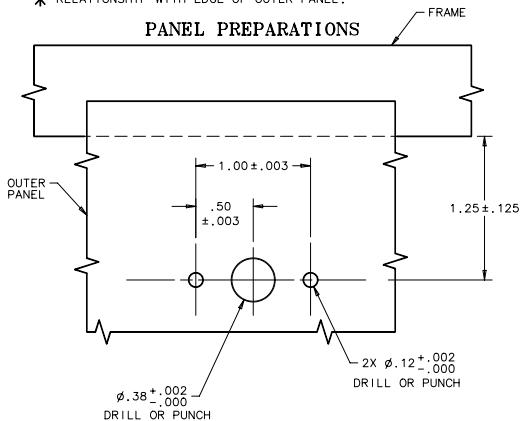
TABLE I

TYPE "A" OPERATION	
T-BAR	ORIENTATION WITH *T* BAR
PARALLEL	PAWL PERPENDICULAR- STOP WASHER PARALLEL
PERPENDICULAR	PAWL PARALLEL- STOP WASHER PERPENDICULAR

TYPE "B" OPERATION	
T-BAR	ORIENTATION WITH *T* BAR
PARALLEL	PAWL PERPENDICULAR- STOP WASHER PERPENDICULAR
PERPENDICULAR	PAWL PARALLEL- STOP WASHER PARALLEL

* RELATIONSHIP WITH EDGE OF OUTER PANEL.

PANEL PREPARATIONS



NOTES: THE DETERMINATION OF HAND & OPERATION OF THIS FASTENER IS DEPENDENT ON THE ORIENTATION OF THE STOP WASHER WITH RESPECT TO THE *T* BAR HANDLE. FOR PROPER ORIENTATION SEE TABLE I.

southco

PROPRIETARY ITEM - EXCEPT FOR USES EXPRESSLY GRANTED IN WRITING INFORMATION DISCLOSED HEREIN IS CONFIDENTIAL AND ALL RIGHTS PATENT AND OTHERWISE ARE RESERVED BY SOUTHCO, INC.

NO.68 PAWL FASTENER-ASSEMBLY

REV	DATE	DRAWN/CHKD	DESCRIPTION	PART NUMBER	MATERIAL	FINISH				DRAWING NUMBER
Z	11APR2005	BRP/RLR	PRN: P2005-0594	68-10-101-10	SEE NOTE B	SEE NOTE B				J-68-10-101-10
										INCHES
										ALL DIMENSIONS WITHOUT TOLERANCES ARE FOR REFERENCE ONLY.
										THIRD ANGLE PROJECTION
										B PAPER SIZE

NOTES:

- FASTENER SHIPPED UNASSEMBLED, PACKAGED ONE UNIT PER BAG.
- PIN: STAINLESS STEEL, NATURAL. SHAFT, SCREW, HEX NUT, TAB WASHER, AND STOP WASHER: STEEL, ZINC FLAKE COATING. FERRULE & ESCUTCHEON PLATE: DIE CAST ZINC, CHEM. PROTECTIVE FILM. *T*-BAR: STEEL, ZINC PLATE PER QQ-Z-325 TYPE 1, CLASS 2, PLUS CHROMATE DIP-BRIGHT. PAWL: DIE CAST ZINC, ZINC FLAKE COATING.

