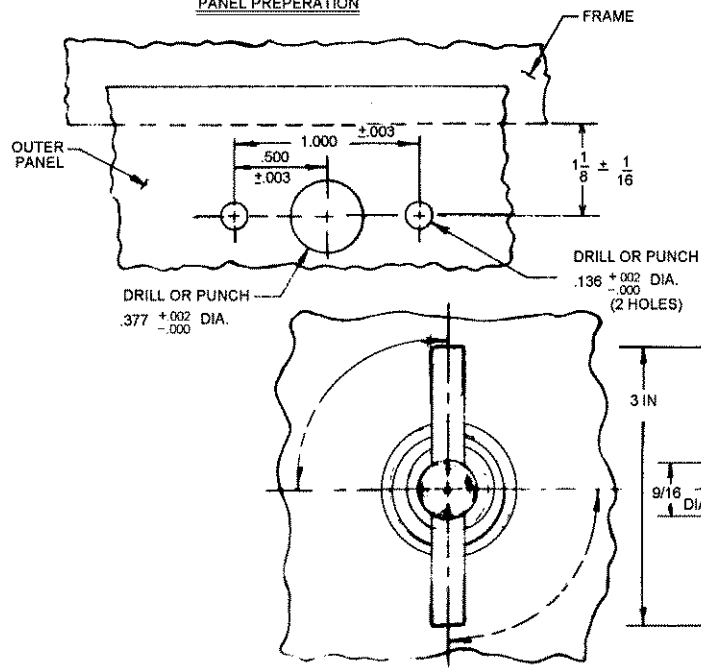


REV. LET.	DATE	BY-CHKD	REVISIONS	ITEM	COMPONENTS	PART NUMBER	MATERIAL	FINISH	R.S.	DATE	APP.
Q	8-25-83	RJB	PRN 68-43	ASSEMBLY		68-10-301-10			A	8-23-83	RHB
H	12-7-88	JSS	PRN: 68-61	HANDLE ASSY					B		
I	1-4-91	JRP	PRN: 68-70		PIN		STAINLESS STEEL	NATURAL	C		
J	2-15-91	JAD	PRN: 68-71		SHAFT		STEEL	DACROTIZED™	D	10-25-87	JSS
K	1-22-93	JSK	PRN: 68-79		FERRULE		DIE CAST ZINC	CHEM. PROTECTIVE FILM			
L	5-MAR-93	VTB	PRN: S-1-03		T - BAR		STEEL	CHEM. PROTECTIVE FILM			

PAWL			STEEL	ZINC PLATE PER QQ-Z-325 TY. II, CL. 2 YELLOW CHROMATE DIP.
HEX NUT (3REQ'D)			STEEL	DACROTIZED™
TAB WASHER			STEEL	DACROTIZED™
STOP WASHER			STEEL	DACROTIZED™
ESCUTCHEON PL.			DIE CAST ZINC	CHEM. PROTECTIVE FILM
ACTUATOR			STEEL	ZINC PLATE PER QQ-Z-325 TY. II, CL. 2 YELLOW CHROMATE DIP.

**PANEL PREPARATION**


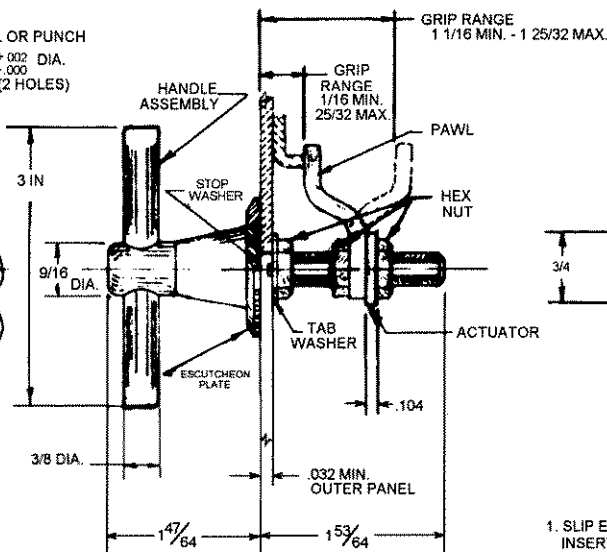
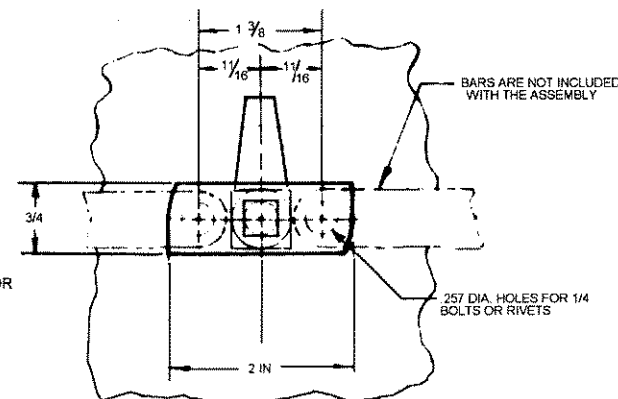
NOTE "A": THE POSITION OF THE HANDLE IN THE LOCKED POSITION OF THIS FASTENER IS DEPENDENT ON THE ORIENTATION OF THE STOP WASHER WITH RESPECT TO THE "T" BAR HANDLE. FOR PROPER ORIENTATION SEE TABLE I BELOW.

TABLE I

TYPE 'A' OPERATION	
* "T" - BAR	ORIENTATION WITH "T" BAR
PARALLEL	PAWL PERPENDICULAR - STOP WASHER PARALLEL
PERPENDICULAR	PAWL PARALLEL - STOP WASHER PERPENDICULAR
TYPE 'B' OPERATION	
* "T" - BAR	ORIENTATION WITH "T" BAR
PARALLEL	PAWL PERPENDICULAR - STOP WASHER PERPENDICULAR
PERPENDICULAR	PAWL PARALLEL - STOP WASHER PARALLEL

\* RELATIONSHIP WITH EDGE OF OUTER PANEL

TM DIAMOND SHAMROCK CORP.


 NOTE B: FASTENER SHIPPED UNASSEMBLED  
 PACKAGED ONE UNIT PER BAG

**INSTALLATION INSTRUCTIONS**

1. SLIP ESCUTCHEON PLATE & STOP WASHER OVER SHAFT & INSERT SHAFT & STOP PINS INTO HOLES IN PANEL.
2. SLIP TAB WASHER OVER SHAFT, RUN NUT UP TO PANEL, THEN BACK OFF TO OBTAIN SMOOTH OPERATION & BEND TABS UP AGAINST FLATS OF SQUARE NUT.
3. RUN SECOND NUT ONTO SHAFT, THEN SLIDE PAWL & ACTUATOR ON SHAFT (MAKE SURE EACH IS PROPERLY POSITIONED), AND THIRD NUT, THEN ADJUST TO CORRECT GRIP AND TIGHTEN NUTS.