

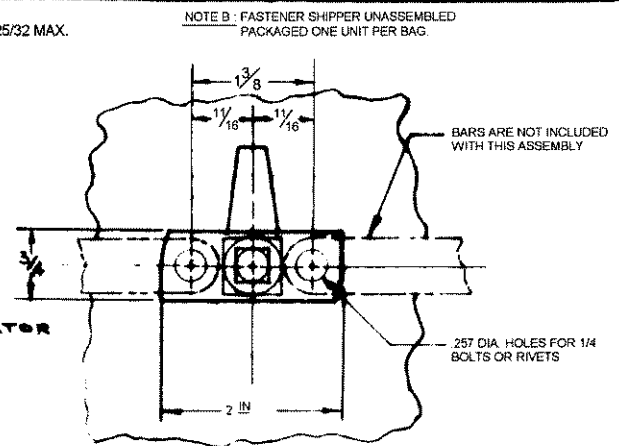
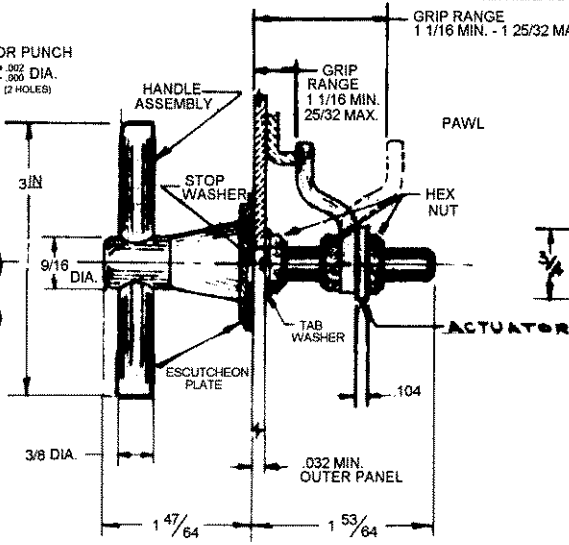
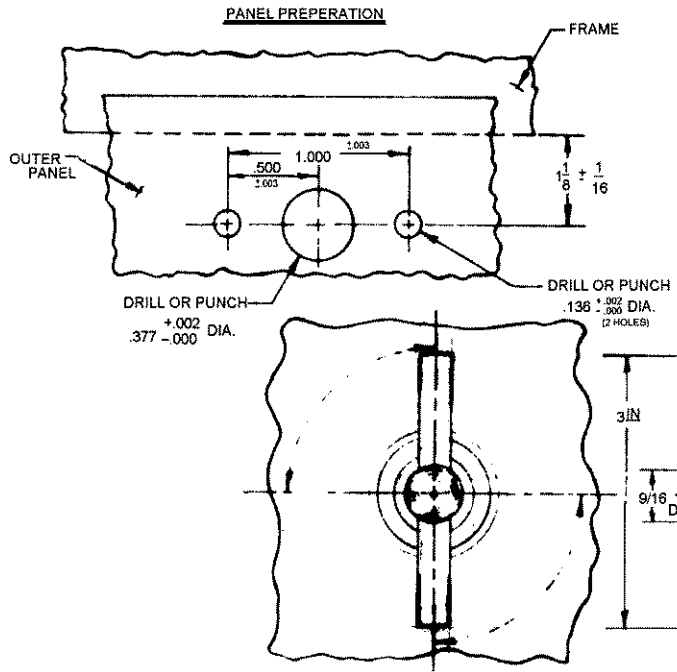


SOUTHCO No 68 PAWL FASTENER ASSEMBLY

DATE	DRAWN	CHKD	SCALE	DRAWING NUMBER
5-7-67	J.G.K.	RHB	N.T.S.	J-68-10-301-20

REV. LET.	DATE	BY-CHKD	REVISIONS	ITEM	COMPONENTS	PART NUMBER	MATERIAL	FINISH	Q.R.	Q.S.	APP.
G	8-25-88	R.H.	PRN: 68-49	ASSEMBLY		68-10-301-20					
H	12-7-88	JGK	PRN: 68-61	HANDLE ASSY							
I	1-4-91	JGK	PRN: 68-76		PIN		STAINLESS STEEL	NATURAL			
J	1-22-93	JGK	PRN: 68-79		SHAFT		STEEL	DACROTIZED™			
K	5-MAR-93	VTB	PRN: S-1-03		FERRULE		DIE CAST ZINC	BRIGHT CHROME PLATE			
					T - BAR		STEEL	BRIGHT CHROME PLATE			

PAWL			STEEL	ZINC PLATE PER QQ-Z-325TY. II, CL.2 YELLOW CHROMATE DIP.
HEX NUT (3REQ'D)			STEEL	DACROTIZED™
TAB WASHER			STEEL	DACROTIZED™
STOP WASHER			STEEL	DACROTIZED™
ESCUTCHEON PL.			DIE CAST ZINC	BRIGHT CHROME PLATE
ACTUATOR			STEEL	ZINC PLATE PER QQ-Z-325TY. II, CL.2 YELLOW CHROMATE DIP.



NOTE "A": THE POSITION OF THE HANDLE IN THE LOCKED POSITION OF THIS FASTENER IS DEPENDENT ON THE ORIENTATION OF THE STOP WASHER WITH RESPECT TO THE "T" - BAR HANDLE. FOR PROPER ORIENTATION SEE TABLE 1 BELOW.

TABLE 1

TYPE "A" OPERATION	
*"T" - BAR	ORIENTATION WITH "T" BAR
PARALLEL	PAWL PERPENDICULAR - STOP WASHER PARALLEL
PERPENDICULAR	PAWL PARALLEL - STOP WASHER PERPENDICULAR
TYPE "B" OPERATION	
*"T" - BAR	ORIENTATION WITH "T" - BAR
PARALLEL	PAWL PERPENDICULAR - STOP WASHER PERPENDICULAR
PERPENDICULAR	PAWL PARALLEL - STOP WASHER PARALLEL

- INSTALLATION INSTRUCTIONS**
- SLIP ESCUTCHEON PLATE & STOP WASHER OVER SHAFT & INSERT SHAFT & STOP PINS INTO HOLES IN PANEL.
 - SLIP TAB WASHER OVER SHAFT, RUN NUT UP TO PANEL, THEN BACK OFF TO OBTAIN SMOOTH OPERATION & BEND TABS UP AGAINST FLATS OF SQUARE NUT.
 - RUN SECOND NUT ON TO SHAFT, THEN SLIDE PAWL & ACTUATOR ON SHAFT (MAKE SURE EACH IS PROPERLY POSITIONED), ADD THIRD NUT, THEN ADJUST TO CORRECT GRIP AND TIGHTEN NUTS.

* RELATIONSHIP WITH EDGE OF OUTER PANEL
 ™ DIAMOND SHAMROCK CORP.

PROPRIETARY ITEM—EXCEPT FOR USES EXPRESSLY GRANTED IN WRITING, INFORMATION DISCLOSED HEREON IS CONFIDENTIAL AND ALL RIGHTS, PATENT AND OTHERWISE, ARE RESERVED BY SOUTHCO, INC.

TOLERANCE UNLESS OTHERWISE NOTED
 DECIMALS ± FRACTIONS ± ANGLES ±

DRAWING NUMBER
 J-68-10-301-20