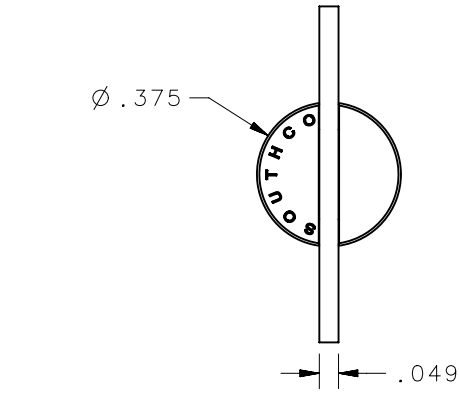
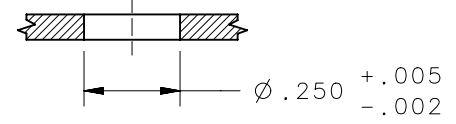
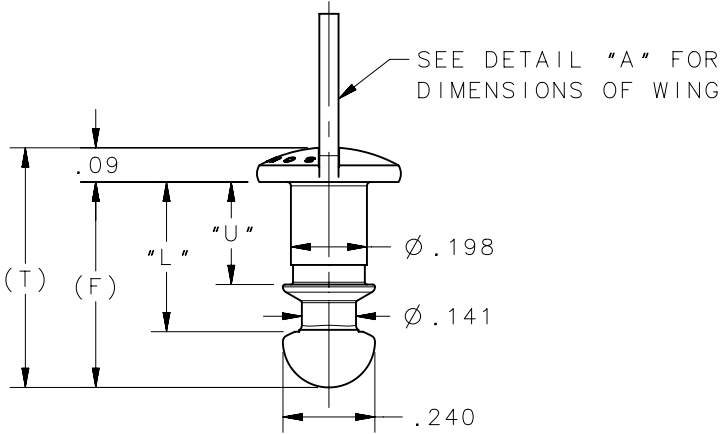
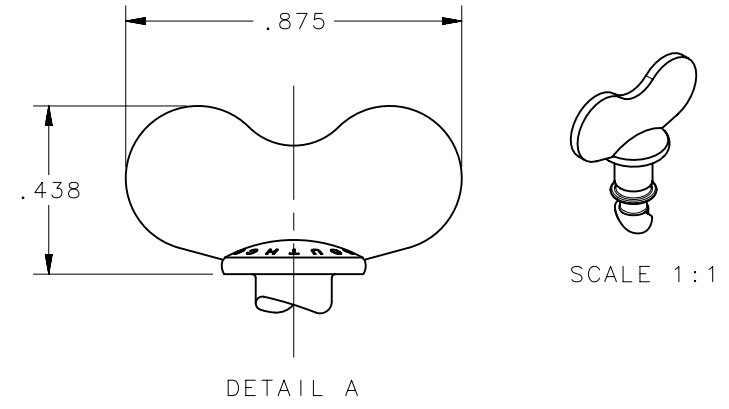


PART NUMBER	U	L	F	T
82-12-040-XX	0.067	0.185	0.335	0.425
82-12-060-XX	0.087	0.205	0.355	0.445
82-12-080-XX	0.107	0.225	0.375	0.465
82-12-100-XX	0.127	0.245	0.395	0.485
82-12-120-XX	0.147	0.265	0.415	0.505
82-12-140-XX	0.167	0.285	0.435	0.525
82-12-160-XX	0.187	0.305	0.455	0.545
82-12-180-XX	0.207	0.325	0.475	0.565
82-12-200-XX	0.227	0.345	0.495	0.585
82-12-220-XX	0.247	0.365	0.515	0.605
82-12-240-XX	0.267	0.385	0.535	0.625
82-12-260-XX	0.287	0.405	0.555	0.645
82-12-280-XX	0.307	0.425	0.575	0.665
82-12-300-XX	0.327	0.445	0.595	0.685
82-12-320-XX	0.347	0.465	0.615	0.705
82-12-340-XX	0.367	0.485	0.635	0.725
82-12-360-XX	0.387	0.505	0.655	0.745
82-12-380-XX	0.407	0.525	0.675	0.765
82-12-400-XX	0.427	0.545	0.695	0.785
82-12-420-XX	0.447	0.565	0.715	0.805
82-12-440-XX	0.467	0.585	0.735	0.825
82-12-460-XX	0.487	0.605	0.755	0.845
82-12-480-XX	0.507	0.625	0.775	0.865
82-12-500-XX	0.527	0.645	0.795	0.885
82-12-520-XX	0.547	0.665	0.815	0.905
82-12-540-XX	0.567	0.685	0.835	0.925
82-12-560-XX	0.587	0.705	0.855	0.945
82-12-580-XX	0.607	0.725	0.875	0.965
82-12-600-XX	0.627	0.745	0.895	0.985
82-12-620-XX	0.647	0.765	0.915	1.005
82-12-640-XX	0.667	0.785	0.935	1.025
82-12-660-XX	0.687	0.805	0.955	1.045
82-12-680-XX	0.707	0.825	0.975	1.065
82-12-700-XX	0.727	0.845	0.995	1.085
82-12-720-XX	0.747	0.865	1.015	1.105
82-12-740-XX	0.767	0.885	1.035	1.125
82-12-760-XX	0.787	0.905	1.055	1.145
82-12-780-XX	0.807	0.925	1.075	1.165
82-12-800-XX	0.827	0.945	1.095	1.185
82-12-820-XX	0.847	0.965	1.115	1.205
82-12-840-XX	0.867	0.985	1.135	1.225
82-12-860-XX	0.887	1.005	1.155	1.245
82-12-880-XX	0.907	1.025	1.175	1.265
82-12-900-XX	0.927	1.045	1.195	1.285
82-12-920-XX	0.947	1.065	1.215	1.305
82-12-940-XX	0.967	1.085	1.235	1.325
82-12-960-XX	0.987	1.105	1.255	1.345
82-12-980-XX	1.007	1.125	1.275	1.365
82-12-1000-XX	1.027	1.145	1.295	1.385



REVISION HISTORY			
REV	DATE	BY	DESCRIPTION
B	23DEC2021	ABK/HPD	PRN: P2021-2497



PANEL PREPARATION

82-12-YYYY-52	STUD	STEEL	CASE HARDENED	ZINC-NICKEL BLACK PLATED
82-12-YYYY-44	STUD	STAINLESS STEEL	-	BLACK OXIDE, SEMI GLOSS
82-12-YYYY-31	STUD	STEEL	CASE HARDENED	BLACK OXIDE
82-12-YYYY-20	STUD	STAINLESS STEEL	-	PASSIVATED
82-12-YYYY-17	STUD	STEEL	CASE HARDENED	ZINC PLATE, YELLOW CHROMATE
82-12-YYYY-16	STUD	STEEL	CASE HARDENED	ZINC PLATE, CHROMATE PLUS SEALER
82-12-YYYY-13	STUD	STEEL	CASE HARDENED	NATURAL
SOUTHCO PART NUMBER	TYPE OF COMPONENT	MATERIAL	HEAT TREAT	FINISH

CPB NUMBER	THIRD ANGLE PROJECTION
	INCHES [MM]
SURFACE AREA	TOLERANCES UNLESS OTHERWISE NOTED
VOLUME	ALL DIMENSIONS WITHOUT TOLERANCES ARE FOR REFERENCE ONLY.
PROPRIETARY ITEM	PER ASME Y14.5M-1994
EXCEPT FOR USES EXPRESSLY GRANTED IN WRITING, INFORMATION DISCLOSED HEREON IS CONFIDENTIAL AND ALL RIGHTS, PATENT AND OTHERWISE, ARE RESERVED BY SOUTHCO, INC.	

DESCRIPTION: SOUTHCO NO. 82 WING HEAD STUD

SIZE: A	SYSTEM: NX	DWG NO.: J-82-55
DRAWN BY: CMS/NJF	DATE: 03SEP2015	SCALE: 2:1 SHEET: 1 OF 1