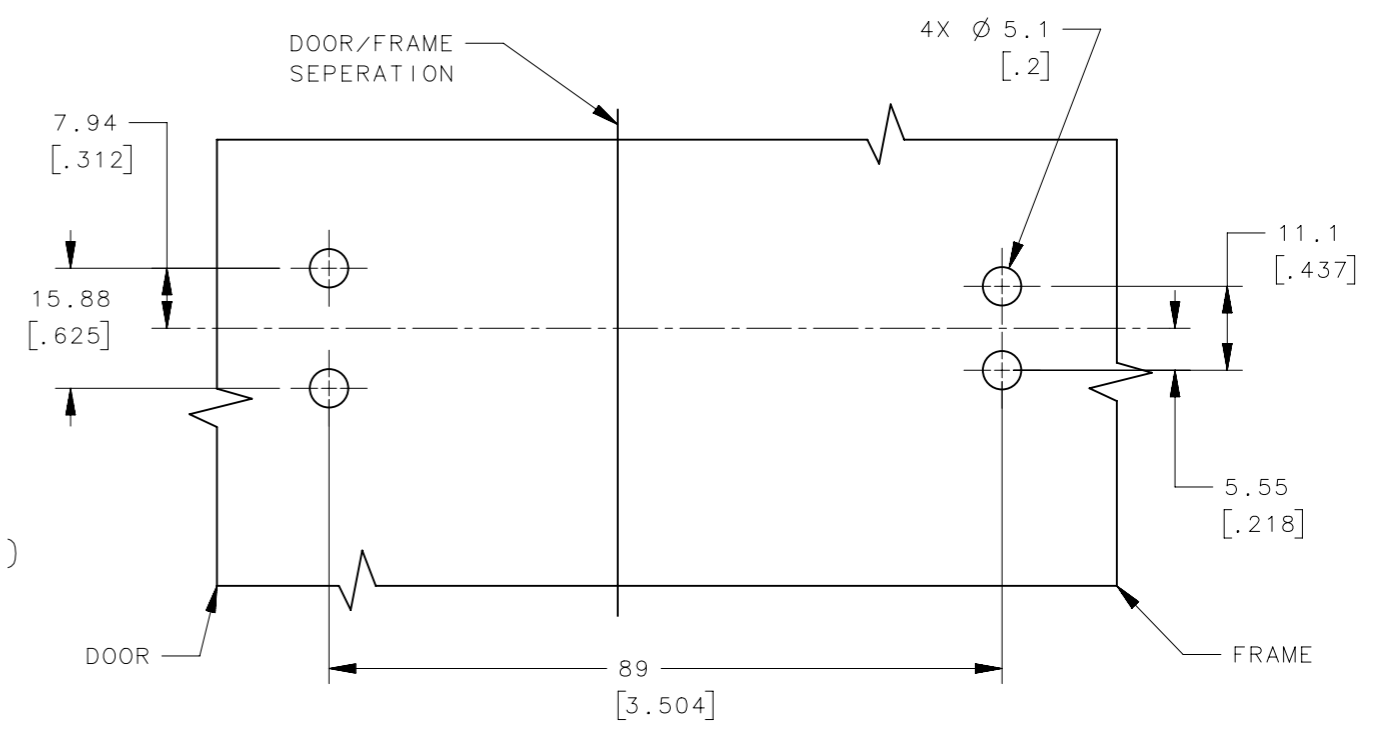
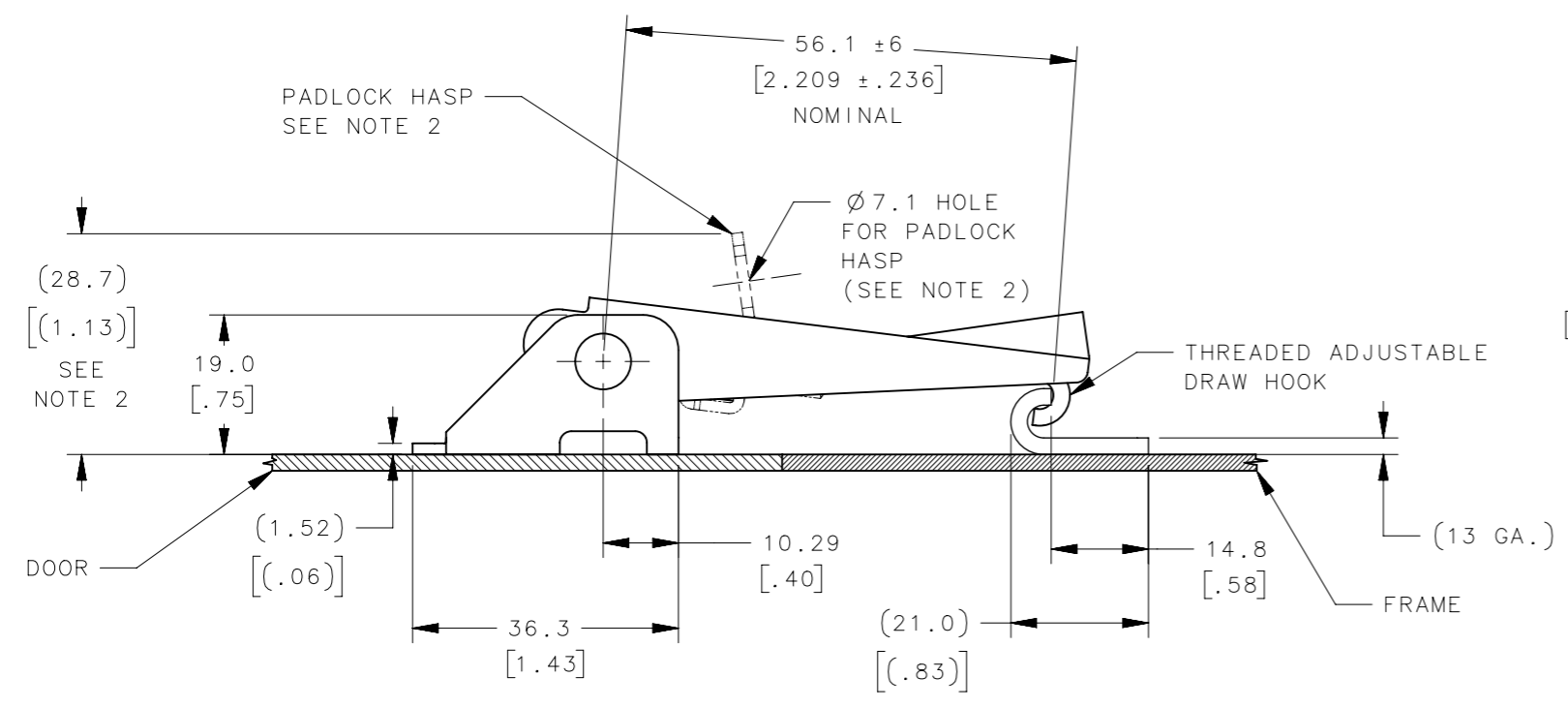
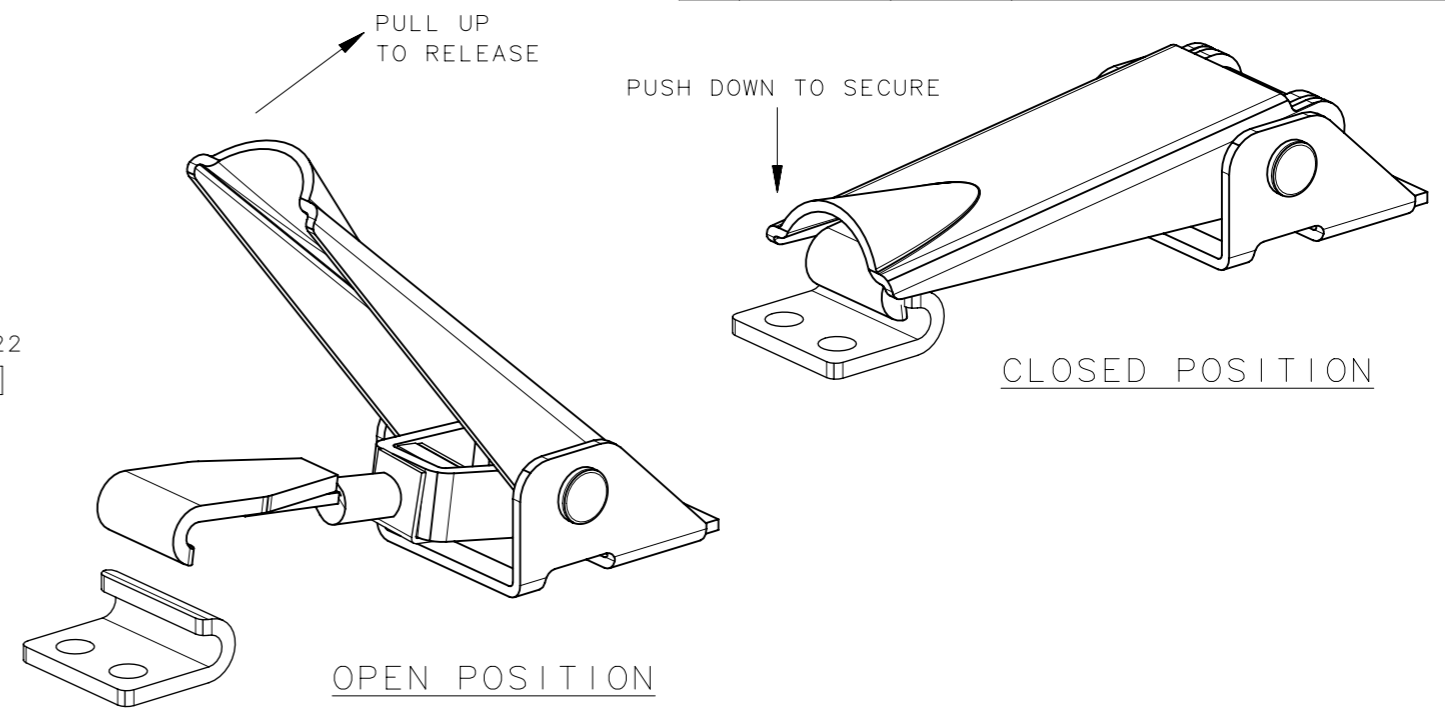
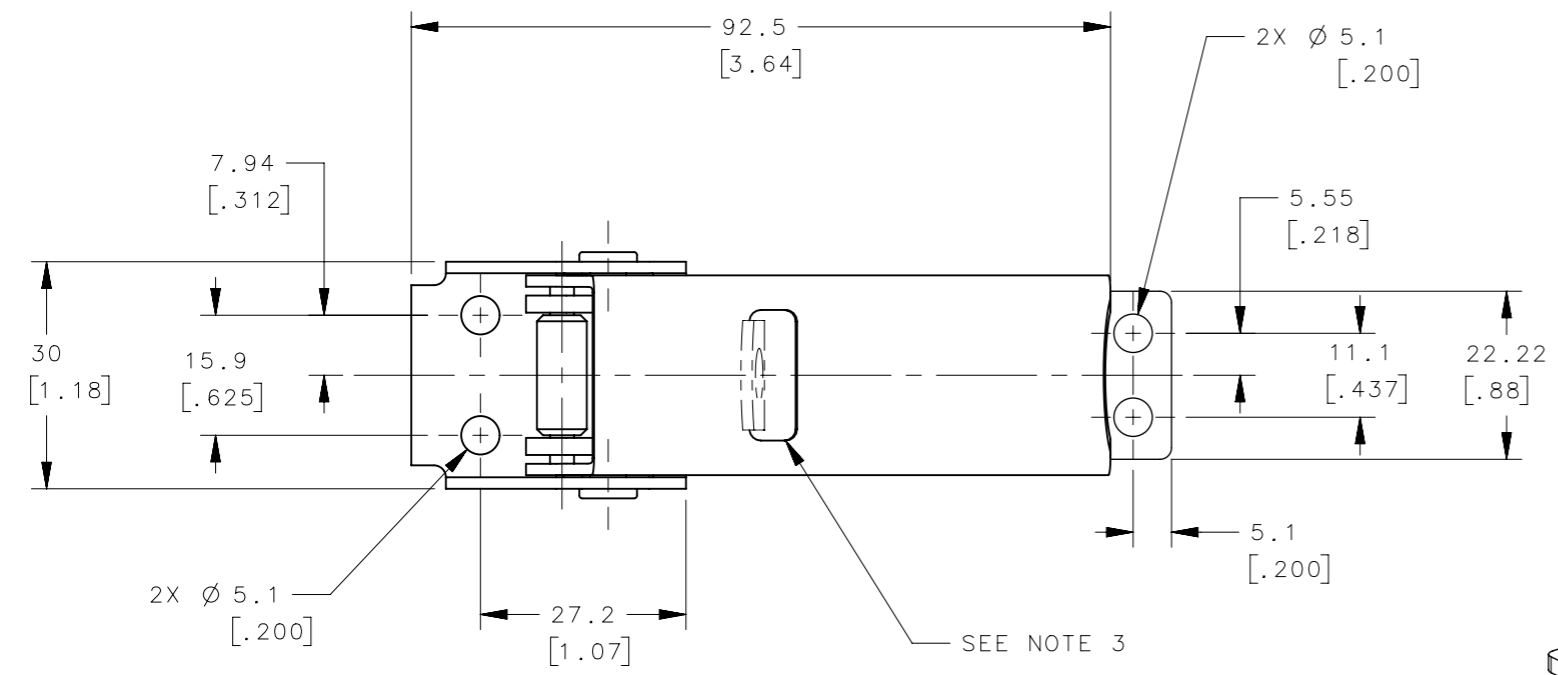


REVISION HISTORY			
REV	DATE	BY	DESCRIPTION
A	19AUG2014	JAJ/YGC	PRN: P2014-1644



- NOTES:
- TAKE-UP IS 9.65 [.38] MINIMUM.
  - SLOT THROUGH HANDLE AND HASP ON 91-772-XX ONLY. HASP WILL TAKE UP TO 1/4" DIAMETER SHACKLE.
  - PART NUMBER 91-752-XX SHOWN.

91-772-52	LATCH ASSEMBLY WITH HASP	300 SERIES CRES	PASSIVATED	
91-772-07	LATCH ASSEMBLY WITH HASP	CRS	ZINC PLATED	
91-752-52	LATCH ASSEMBLY	300 SERIES CRES	PASSIVATED	
91-752-07	LATCH ASSEMBLY	CRS	ZINC PLATED	
PART NUMBER	TYPE OF COMPONENT	MATERIAL	FINISH	GENERAL NOTES

THIRD ANGLE PROJECTION				
MILLIMETERS [IN]				
TOLERANCES UNLESS OTHERWISE NOTED		DESCRIPTION		
ALL DIMENSIONS WITHOUT TOLERANCES ARE FOR REFERENCE ONLY.		Draw Latch ADJUSTABLE TENSION LATCH		
PROPRIETARY ITEM EXCEPT FOR USES EXPRESSLY GRANTED IN WRITING, INFORMATION DISCLOSED HEREON IS CONFIDENTIAL AND ALL RIGHTS, PATENT AND OTHERWISE, ARE RESERVED BY SOUTHCO, INC.	PER ASME Y14.5M-1994	SIZE A3	SYSTEM NX	DWG NO. J-91-7
		DRAWN BY JAJ/YGC	DATE 19AUG2014	SCALE 1:1
				SHEET 1 OF 1