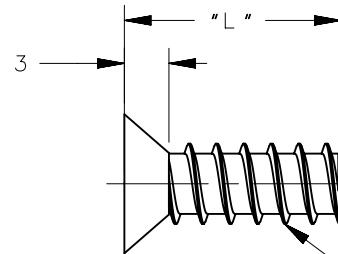
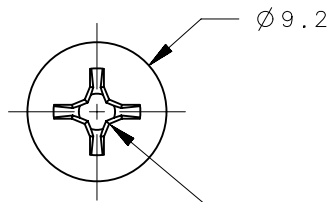
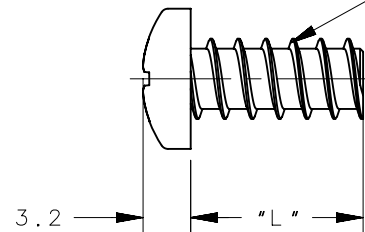
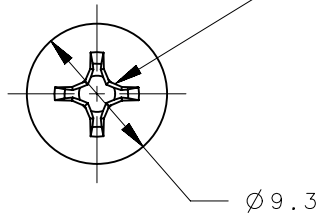


REVISION HISTORY			
REV	DATE	BY	DESCRIPTION
C	11JUL2014	MJS/JJT	PRN: P2014-1174

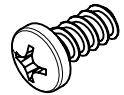
FLAT HEAD



PAN HEAD



THREAD FORMING SCREWS  
 MAJOR DIAMETER: 5.3  
 MINOR DIAMETER: 4



PART NUMBER	DIMENSION "L"	MATERIAL	FINISH	HEAD STYLE
96-79-1	11.4	18-8 STAINLESS STEEL	PASSIVATED	PAN
96-79-2	14.4	18-8 STAINLESS STEEL	PASSIVATED	PAN
96-79-3	17.4	18-8 STAINLESS STEEL	PASSIVATED	PAN
96-79-4	20.4	18-8 STAINLESS STEEL	PASSIVATED	PAN
96-79-11	11.4	18-8 STAINLESS STEEL	PASSIVATED	FLAT
96-79-12	14.4	18-8 STAINLESS STEEL	PASSIVATED	FLAT
96-79-13	17.4	18-8 STAINLESS STEEL	PASSIVATED	FLAT
96-79-14	20.4	18-8 STAINLESS STEEL	PASSIVATED	FLAT

THIRD ANGLE PROJECTION

MILLIMETERS [IN]

TOLERANCES UNLESS OTHERWISE NOTED

ALL DIMENSIONS WITHOUT TOLERANCES ARE FOR REFERENCE ONLY.

PER ASME Y14.5M-1994

**southco**<sup>®</sup>  
 CONNECT • CREATE • INNOVATE

DESCRIPTION  
 96 SCREW - SELF-TAPPING  
 PHILLIPS RECESS, FLAT-HEAD, PAN-HEAD

SIZE A4	SYSTEM NX	DWG NO. J-96-79
------------	--------------	--------------------

DRAWN BY RJB	DATE 29APR1999	SCALE 2:1	SHEET 1 OF 1
-----------------	-------------------	--------------	-----------------

PROPRIETARY ITEM  
 EXCEPT FOR USES EXPRESSLY GRANTED  
 IN WRITING, INFORMATION DISCLOSED  
 HEREON IS CONFIDENTIAL AND ALL  
 RIGHTS, PATENT AND OTHERWISE,  
 ARE RESERVED BY SOUTHCO, INC.