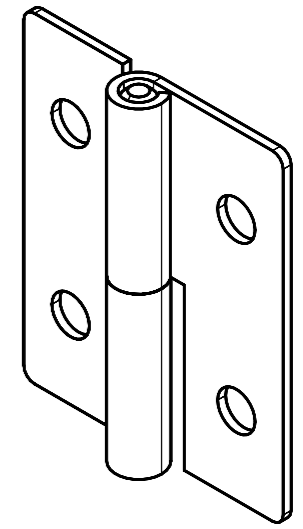
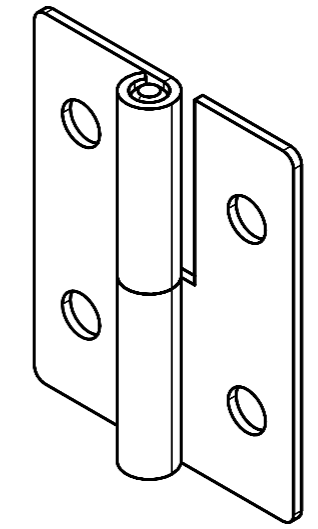
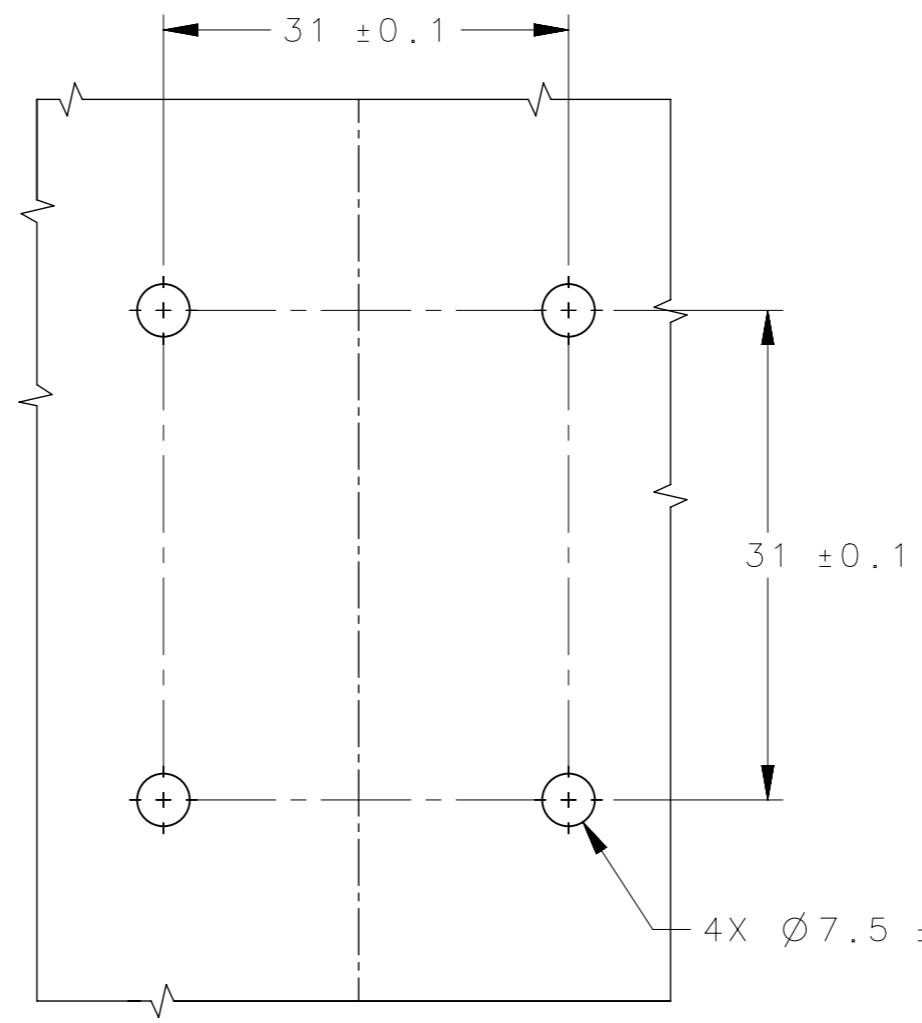
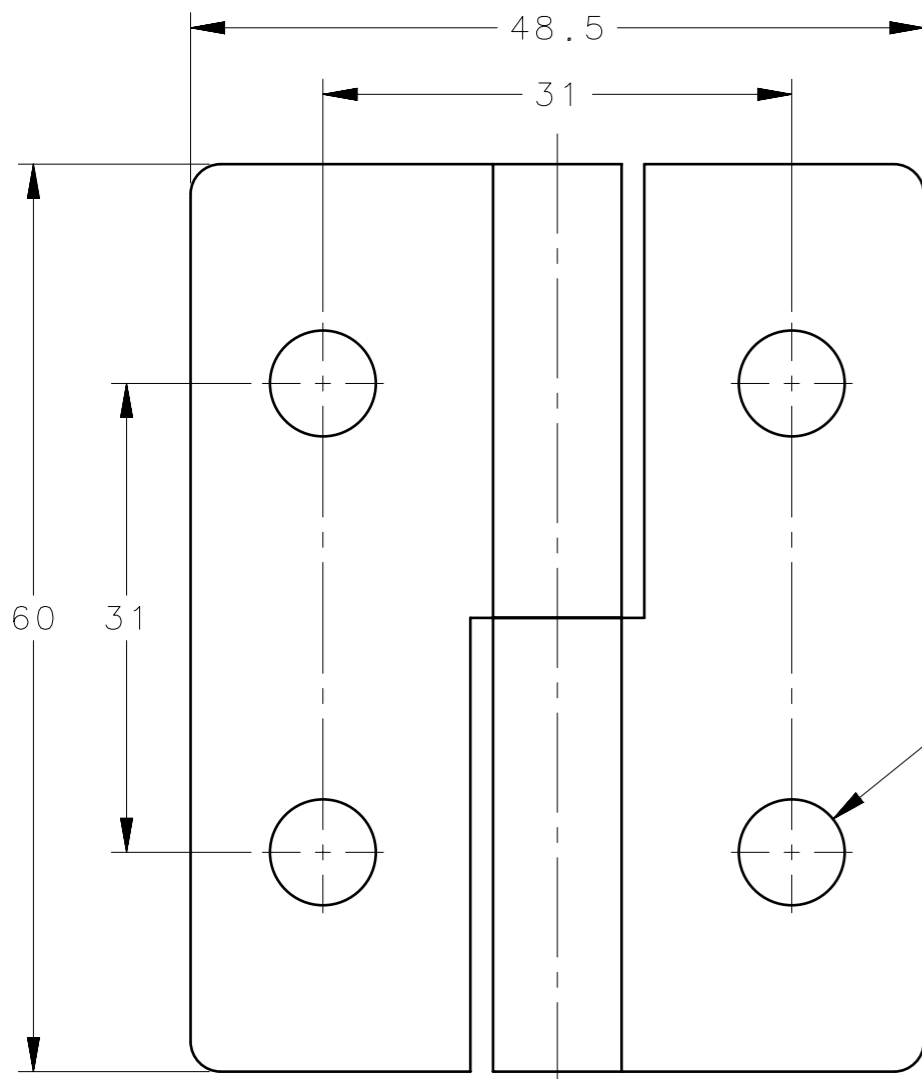


REVISION HISTORY			
REV	DATE	BY	DESCRIPTION
A	03JUN2024	SBK/VK	IPN: IP-2024-1317

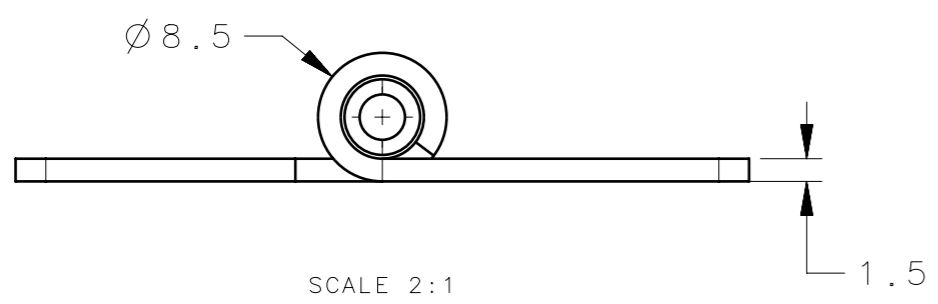


96-DHLM-6048-R
96-DHLM-6048-R-CH
96-DHLM-6048-R-SS

96-DHLM-6048-L
96-DHLM-6048-L-CH
96-DHLM-6048-L-SS

SCALE 2:1

PANEL PREPARATION



SCALE 2:1

- NOTES:-
1. MOUNTING SCREWS NOT SUPPLIED.
 2. OPENING ANGLE 180°.

96-DHLOM-6048-R	LIFT-OFF HINGES	MS	BLUE ZINC PLATED
96-DHLOM-6048-L	LIFT-OFF HINGES	MS	BLUE ZINC PLATED
96-DHLOM-6048-R-CH	LIFT-OFF HINGES	MS	CHROME PLATED
96-DHLOM-6048-L-CH	LIFT-OFF HINGES	MS	CHROME PLATED
96-DHLOM-6048-R-SS	LIFT-OFF HINGES	SS 304	ELECTRO POLISHING
96-DHLOM-6048-L-SS	LIFT-OFF HINGES	SS 304	ELECTRO POLISHING
SOUTHCO PART NUMBER	DESCRIPTION	MATERIAL	FINISH

CPB NUMBER 2024-0166	THIRD ANGLE PROJECTION			
SURFACE AREA mm ²	MILLIMETERS [IN]			
VOLUME mm ³	TOLERANCES UNLESS OTHERWISE NOTED	DESCRIPTION LIFT-OFF HINGES		
PROPRIETARY ITEM EXCEPT FOR USES EXPRESSLY GRANTED IN WRITING, INFORMATION DISCLOSED HEREON IS CONFIDENTIAL AND ALL RIGHTS, PATENT AND OTHERWISE, ARE RESERVED BY SOUTHCO, INC.	ALL DIMENSIONS WITHOUT TOLERANCES ARE FOR REFERENCE ONLY.	SIZE A3	SYSTEM NX	DWG NO. J-96-DHLOM-6048
PER ASME Y14.5M-2009		DRAWN BY SBK	DATE 14MAR2024	SCALE 1:1
				SHEET 1 OF 1