

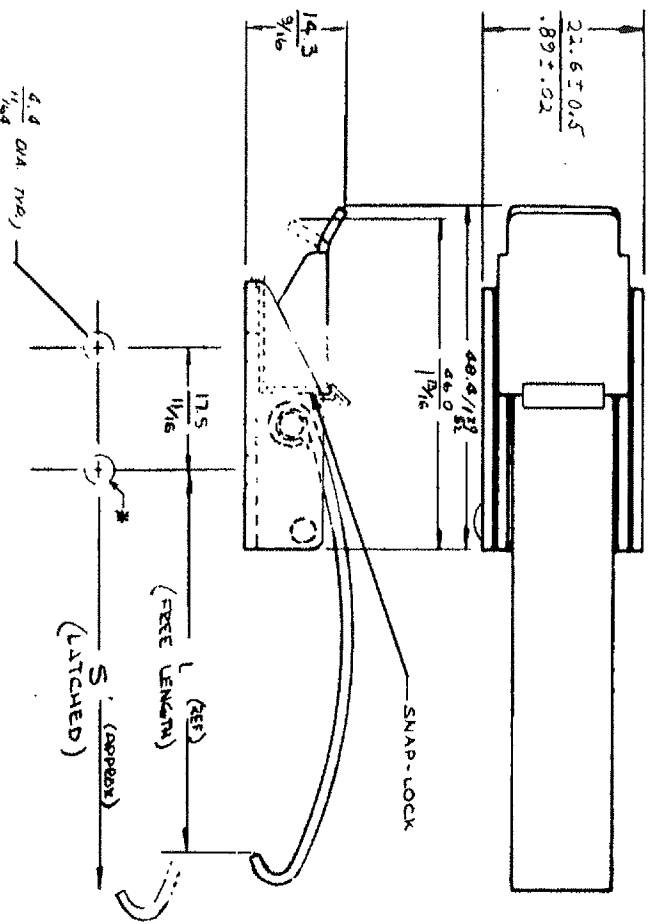


No 97 DRAW CATCH - MOUNTING SPECIFICATIONS
 ASSEMBLIES W/ SNAP-LOCK, NO KEEPER W/ HOOKED SPRINGS

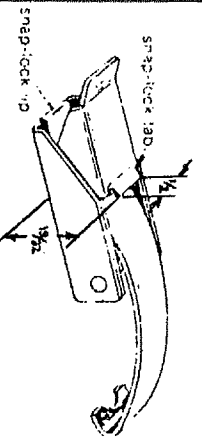
DATE	DRAWN	CNKO	SCALE	DRAWING NUMBER
4-9-87	SEE		NTS	J-97-50-25

LEVER STYLE	SPRING RATING	SPRING LENGTH	PART NUMBER	L	S
ACTUATING TAB UP	LIGHT DUTY	SHORT	97-50-110-25	29.4 / 1 1/8	31.8 / 1 1/4
	HEAVY DUTY	MEDIUM	97-50-120-25	42.1 / 1 3/8	44.4 / 1 3/4
		LONG	97-50-130-25	54.8 / 2 1/8	57.1 / 2 1/4
ACTUATING TAB DOWN	HEAVY DUTY	SHORT	97-50-150-25	29.4 / 1 1/8	31.8 / 1 1/4
		MEDIUM	97-50-160-25	42.1 / 1 3/8	44.4 / 1 3/4
		LONG	97-50-170-25	54.8 / 2 1/8	57.1 / 2 1/4
HEAVY DUTY	HEAVY DUTY	SHORT	97-50-210-25	29.4 / 1 1/8	31.8 / 1 1/4
		MEDIUM	97-50-220-25	42.1 / 1 3/8	44.4 / 1 3/4
		LONG	97-50-230-25	54.8 / 2 1/8	57.1 / 2 1/4
HEAVY DUTY	HEAVY DUTY	SHORT	97-50-250-25	29.4 / 1 1/8	31.8 / 1 1/4
		MEDIUM	97-50-260-25	42.1 / 1 3/8	44.4 / 1 3/4
		LONG	97-50-270-25	54.8 / 2 1/8	57.1 / 2 1/4

PART NUMBER SUFFIX - INDICATES MATERIAL & FINISH
 -25 ~ LEVER BASE AND SPRING - STEEL; PIN & RIVET - STAIN, STEEL; BLACK ORGANIC COATING
 SNAP LOCK - STEEL, ZINC PLATE PLUS BLACK ORGANIC COATING



NOTE ~ SNAP-LOCK SHIPPED UNASSEMBLED
 PART No. 97-58-101-11



To install
 While installing, catch base position turned down lip of snap-lock against rear edge of base to align mounting holes. Insert mounting screw or rivet through both parts.
 To open, push snap-lock tab forward and lift lever.
 To close, just push lever back down, snap-lock will spring to locked position.

REV C / 02JUL2016 / P2015-1306 / CMS/NJF

MM
 INCH

REV A 5-22-90 RHP PRAI 97-156
 REV B 12 JAN 93 JC PRMS-1-03

PROPRIETARY ITEM - EXCEPT FOR USES EXPRESSLY GRANTED IN WRITING, INFORMATION DISCLOSED HEREON IS CONFIDENTIAL AND ALL RIGHTS, PATENT AND OTHERWISE, ARE RESERVED BY SOUTHCO, INC.

DRAWING NUMBER
 J-97-50-25