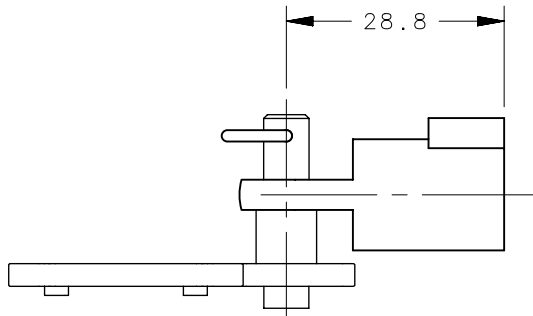
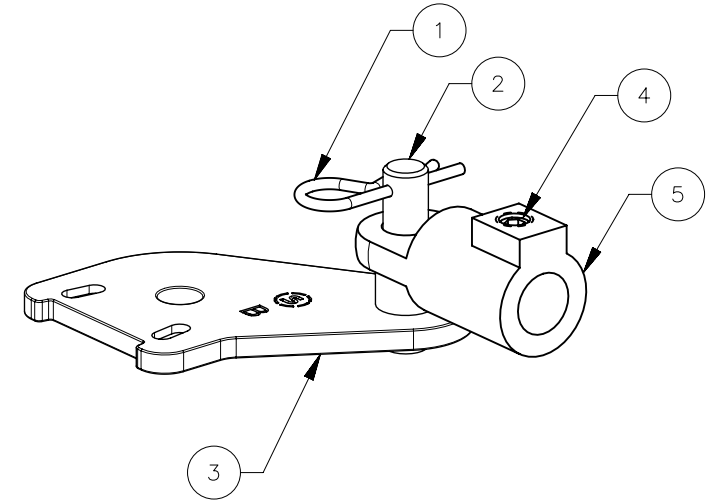
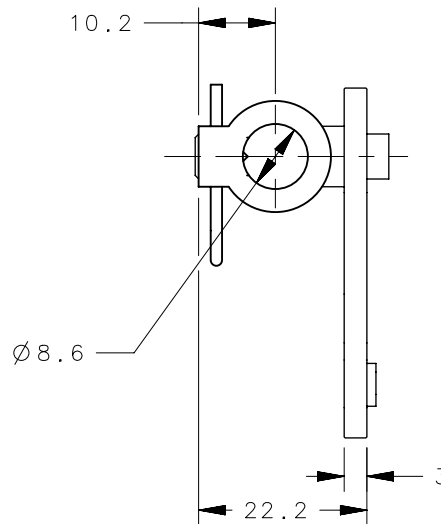
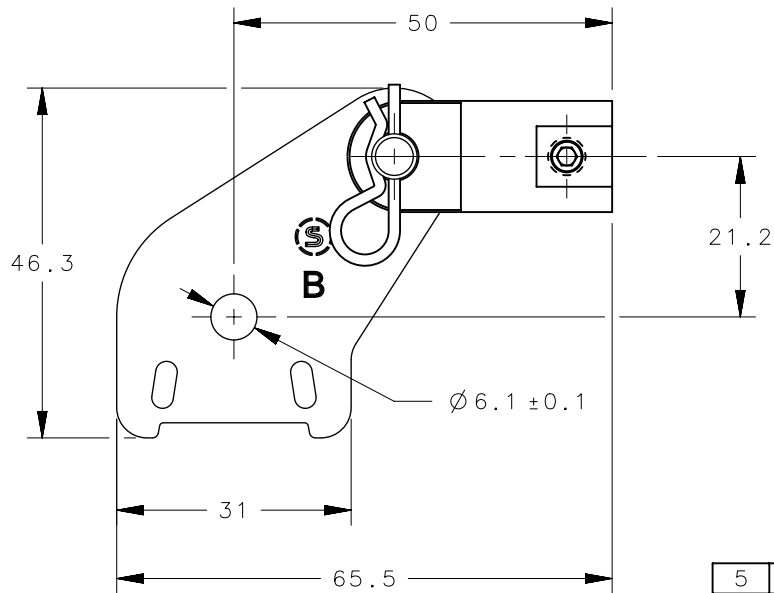


NOTES:

1. ALL MATERIALS AND FINISHES ARE RoHS COMPLIANT.
2. 'FF' DENOTES PLATE SUB-ASSY FINISH AS FOLLOWS:
77 = S-101-27
3. BULK PACKAGED WITH ACTUATOR SUBASSEMBLY, COTTER PIN, SET SCREW AND ROUND ROD ADAPTER IN SEPARATE BAGS.
4. COSMETIC SPECIFICATION:
ALL SURFACES, UNLESS OTHERWISE NOTED, ARE TO CONFORM TO A CLASS "C" DESIGNATION AS DESCRIBED IN SOUTHCO COSMETIC SPECIFICATION:
S-121-02 FOR ZINC PLATING AND SEALED PARTS
S-121-05 FOR STAINLESS STEEL PARTS
5. MIRROR IMAGE OF A5-90-904-FF.

REVISION HISTORY			
REV	DATE	BY	DESCRIPTION
C	24MAY2023	IR/CRM	PRN: P2023-0879



5	-	1	ROD ADAPTER	ZAMAC 3	CLEAR CHROMATE
4	-	1	SET SCREW	STAINLESS	PASSIVATED
3	-	1	PLATE	STEEL	ZINC NICKEL PLATE
2	-	1	ARM PIN	STEEL	ZINC NICKEL PLATE
1	-	1	HAIRPIN COTTER PIN	STAINLESS	PASSIVATED
-	A5-90-901-FF	-	ACTUATOR ASSEMBLY	-	-
NO.	PART NUMBER	QTY	TYPE OF COMPONENT	MATERIAL	FINISH

THIRD ANGLE PROJECTION					
MILLIMETERS [IN]					
CPB NUMBER 2018-0261	TOLERANCES UNLESS OTHERWISE NOTED		DESCRIPTION MULTI-POINT LATCHING SYSTEM, A5/E5 ACTUATOR ASSEMBLY, TYPE B		
SURFACE AREA mm ²	ALL DIMENSIONS WITHOUT TOLERANCES ARE FOR REFERENCE ONLY.		SIZE A4	SYSTEM NX	DWG NO. J-A5-90-901
VOLUME mm ³	PER ASME Y14.5M-1994		DRAWN BY IR/	DATE 03MAR2018	SCALE DNS
PROPRIETARY ITEM EXCEPT FOR USES EXPRESSLY GRANTED IN WRITING, INFORMATION DISCLOSED HEREON IS CONFIDENTIAL AND ALL RIGHTS, PATENT AND OTHERWISE, ARE RESERVED BY SOUTHCO, INC.			SHEET 1 OF 1		