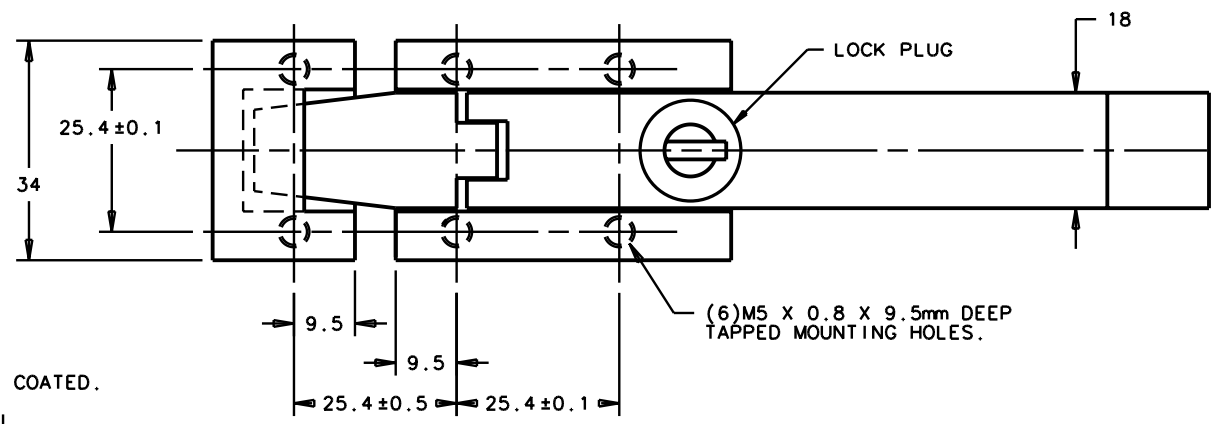


REV.	DATE	DRAWN	REVISION	ITEM	PART NUMBER	LEVER MATERIAL	PAWL MATERIAL	BASE MATERIAL	KEEPER MATERIAL	COMPONENT MATERIAL & FINISH
A	05FEB93	KPL	PRN: S-1-03	ASSEMBLY	A7-10-352-20	DIE CAST ZINC	DIE CAST ZINC	SEE NOTE A	SEE NOTE C	SEE NOTE C
B	09OCT96	SWD	PRN: S-93-23	ASSEMBLY	A7-10-352-30	DIE CAST ZINC	BRIGHT CHROME PLATED	SEE NOTE A	SEE NOTE C	SEE NOTE C
C	28NOV2001	RJB/JSS	PRN: P2001-0631	ASSEMBLY	A7-10-352-75	DIE CAST ZINC	SEE NOTE B	SEE NOTE A	SEE NOTE C	SEE NOTE C

MILLIMETER DIMENSIONS
DIMENSIONS WITHOUT TOLERANCES ARE FOR REFERENCE ONLY.

THIRD ANGLE PROJECTION

A4 PAPER SIZE



NOTES:

- A. BLACK POWDER COATED.
- B. SATIN SILVER POLYESTER POWDER COATED.
- C. VISIBLE PINS - STAINLESS STEEL, PASSIVATED; INTERNAL PINS - STAINLESS STEEL, NATURAL; LINK - DIE CAST ZINC, CHEMICAL PROTECTIVE FILM; SPRING - MUSIC WIRE, PHOSPHATE DIP PLUS BLACK ORGANIC COATING; LOCK PLUG - DIE CAST ZINC AND BRASS, SEE FINISH IN ABOVE TABLE; LOCK EXTENSION - DIE CAST ZINC, CHEMICAL PROTECTIVE FILM; LOCK SLIDE - STEEL, ZINC PLATE BRIGHT.

