

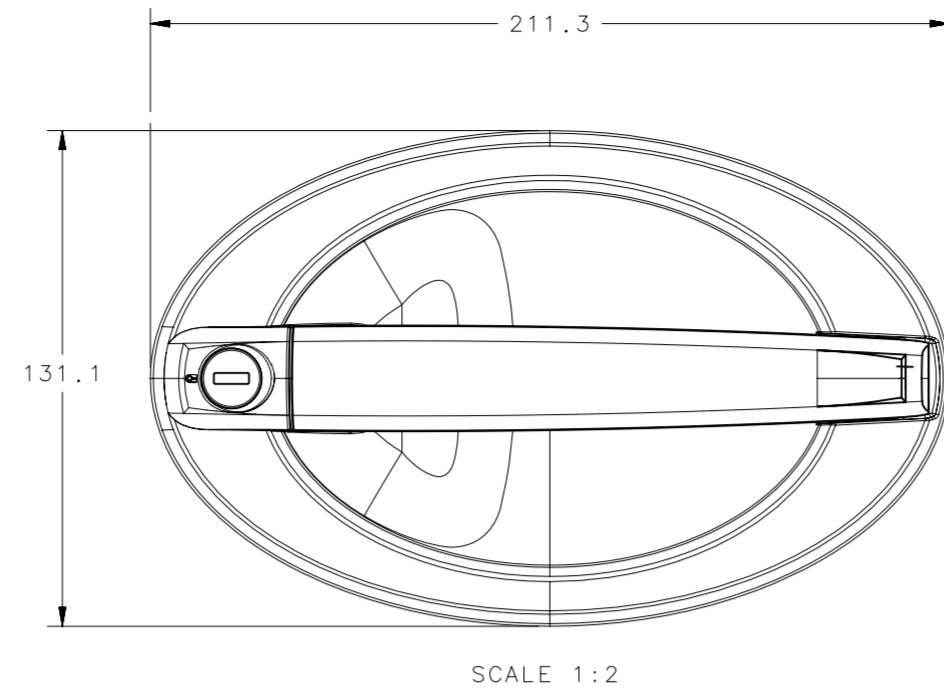
PART NUMBER: AC-11-XY1-11-WWWW

- X = STYLE:
 1 - SINGLE POINT, DIRECT PULL
 2 - MULTIPOINT, WITHOUT CABLE BRACKET
 3 - MULTIPOINT, WITH CABLE BRACKET

- Y = LOCKING OPTION:
 0 - NON-LOCKING
 1 - REVERSIBLE KEY (R001), NO KEYS INCLUDED
 2 - REVERSIBLE KEY (R001), 2 KEYS INCLUDED
 3 - REVERSIBLE KEY (MULTIPLE KEYCODES), 2 KEYS INCLUDED
 4 - STANDARD KEY (CH751), NO KEYS INCLUDED
 5 - STANDARD KEY (CH751), 2 KEYS INCLUDED
 6 - STANDARD KEY (MULTIPLE KEYCODES), 2 KEYS INCLUDED
 7 - REVERSIBLE KEY (14603), 2 KEYS INCLUDED
 9 - NO LOCKPLUG INSTALLED

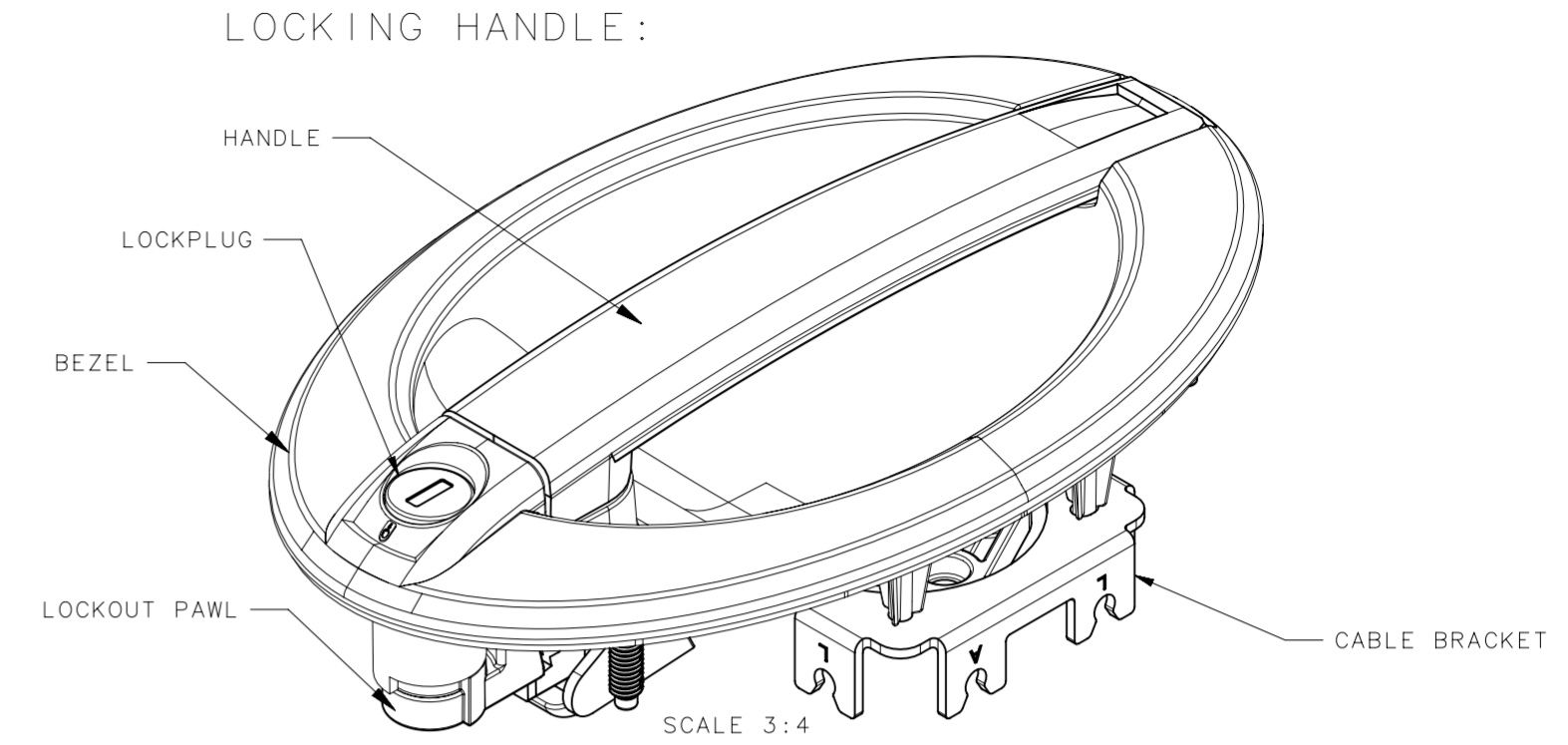
- WWW = KEY CODE OPTION
 KD10 - KEYED DIFFERENTLY, 10 CODES (ONLY USED IF Y= 3 OR 6)
 MK10 - MASTER KEYED, KEYED DIFFERENTLY, 10 CODES (ONLY USED IF Y= 6)

REVISION HISTORY			
REV	DATE	BY	DESCRIPTION
C	22JUL2024	KLK/RD	PRN: P2024-1264

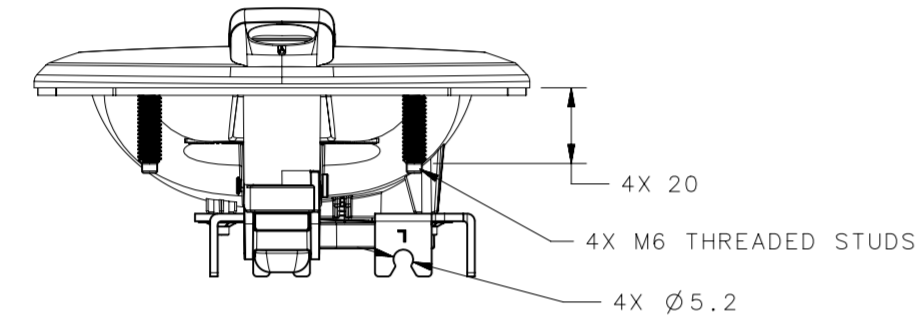


SCALE 1:2

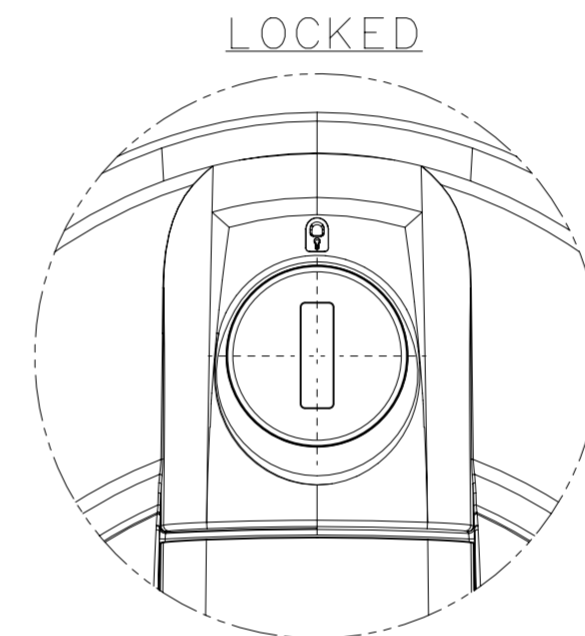
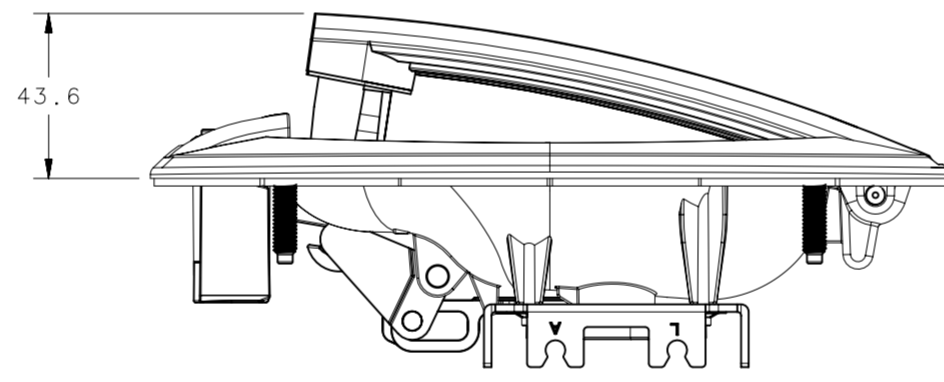
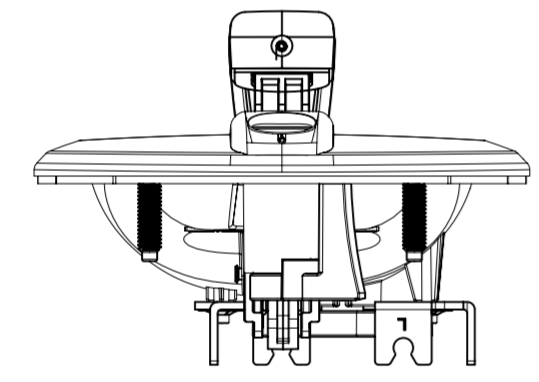
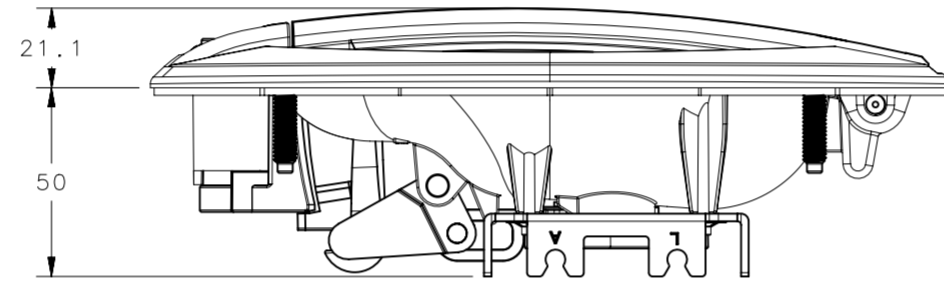
FULLY CLOSED



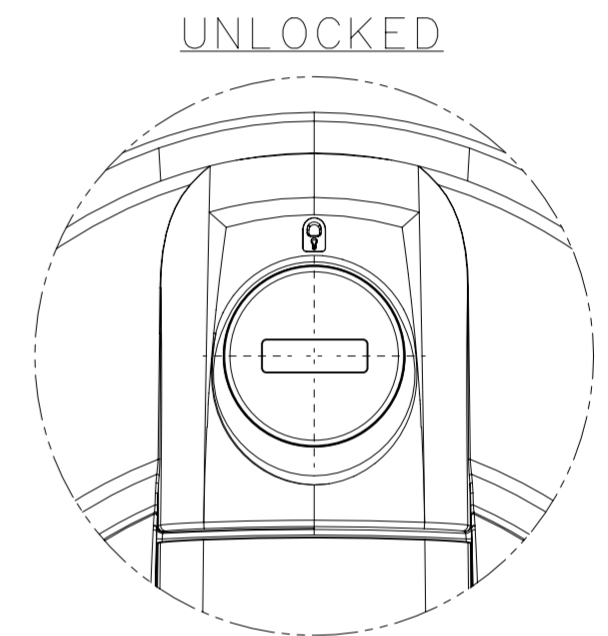
SCALE 3:4



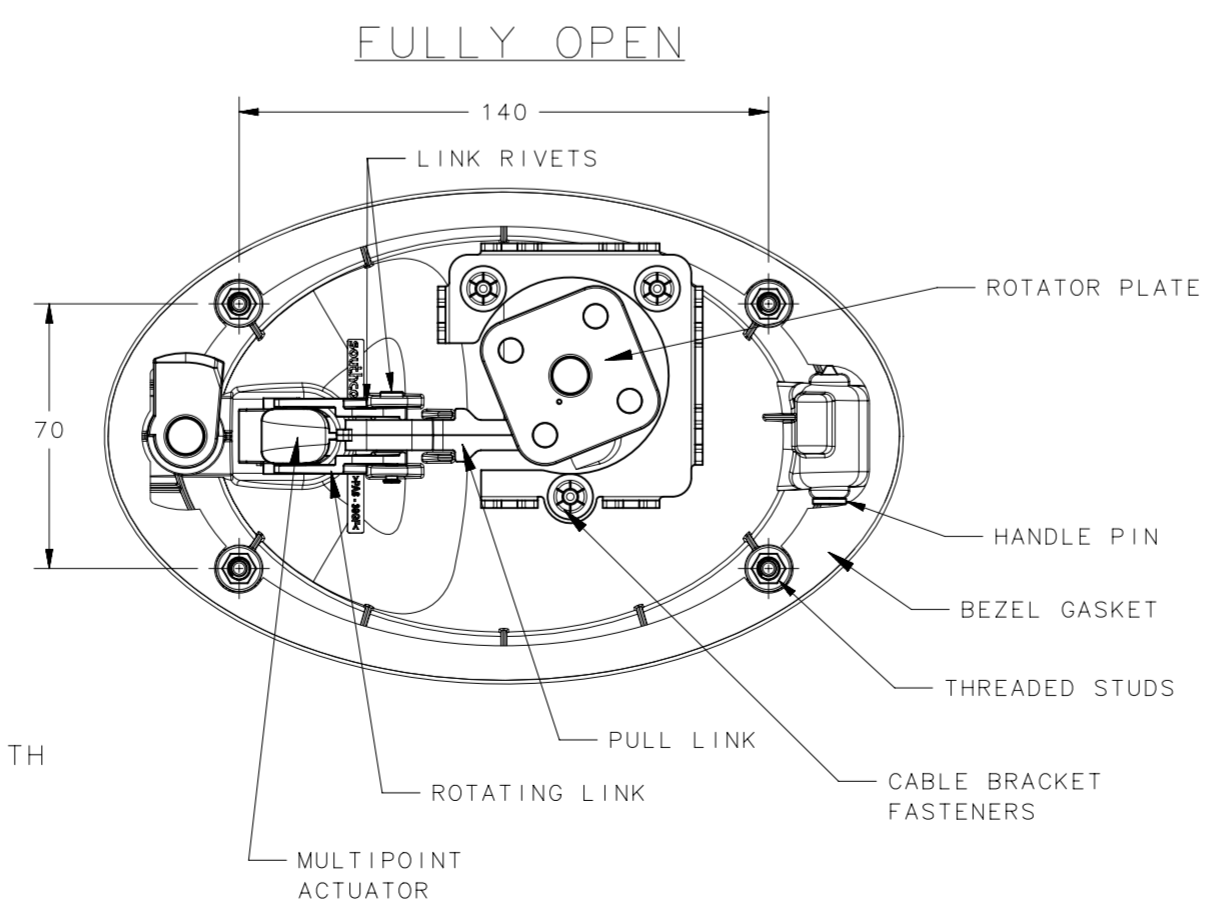
PART NUMBER AC-11-341-11 SHOWN



SCALE 3:2

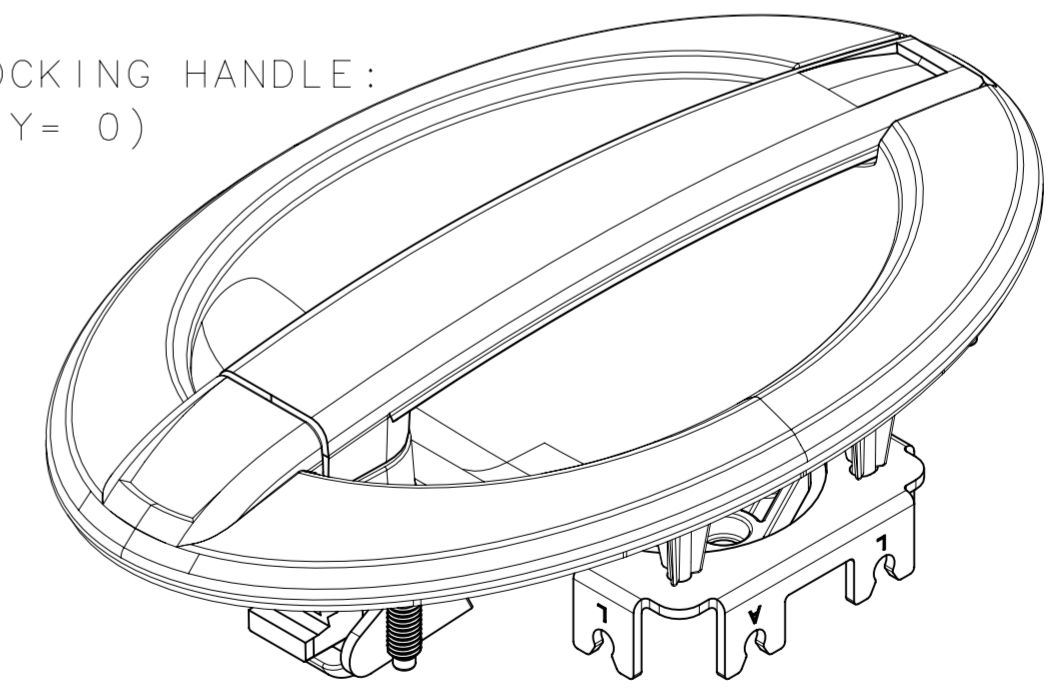


- NOTES:
- A. ASSEMBLIES SHIPPED TRAY PACKAGED, LAYERED.
 - B. MATERIAL AND FINISH:
 - BEZEL, HANDLE, MULTIPOINT ACTUATOR, ROTATING LINK, PULL LINK, ROTATOR PLATE, AND LOCKOUT PAWL: NYLON, BLACK
 - THREADED STUDS: STEEL, ZINC NICKEL PLATE
 - THREADED INSERT: BRASS, NATURAL
 - ALL PINS AND E-CLIP: STAINLESS STEEL, NATURAL
 - ALL RIVETS: ALUMINUM, NATURAL
 - ALL SPRINGS: STAINLESS STEEL, NATURAL
 - LOCKPLUG SEAL: TPE, BLACK
 - LOCKPLUG ADAPTER: ZINC DIE CAST
 - ALL GASKETS: CLOSED CELL FOAM, BLACK
 - CABLE BRACKET & FASTENERS: STEEL, ZINC PLATE
 - C. FOR WWW= MK10, MASTER KEY PART NUMBER: PK-24-01
 - D. FOR USE WITH RODS/CABLES, RODS NOT SUPPLIED BY SOUTHCO. CABLES AND RETAINER CLIPS SOLD SEPARATELY. RECOMMENDED SNAP IN RETAINER FOR ROTATOR PLATE: SOUTHCO PART NUMBER R4-0-43922. SEE DRAWING J-R4-0-43922 FOR MORE DETAILS AND OPTIONS.
 - E. RECOMMENDED CABLE STYLE: SOUTHCO TYPE 7 CABLE, JACKETED CABLE WITH SNUB END COUPLING AND END COUPLING RETAINERS, PLUS L FITTING ON ACTUATOR SIDE. SEE DRAWING J-AC-C FOR MORE DETAILS. CONTACT SOUTHCO FOR CABLE DESIGN SUPPORT.
 - F. INSTALLATION TORQUE OF MOUNTING NUTS NOT TO EXCEED 7N-m [62in-lbs].



FULLY OPEN

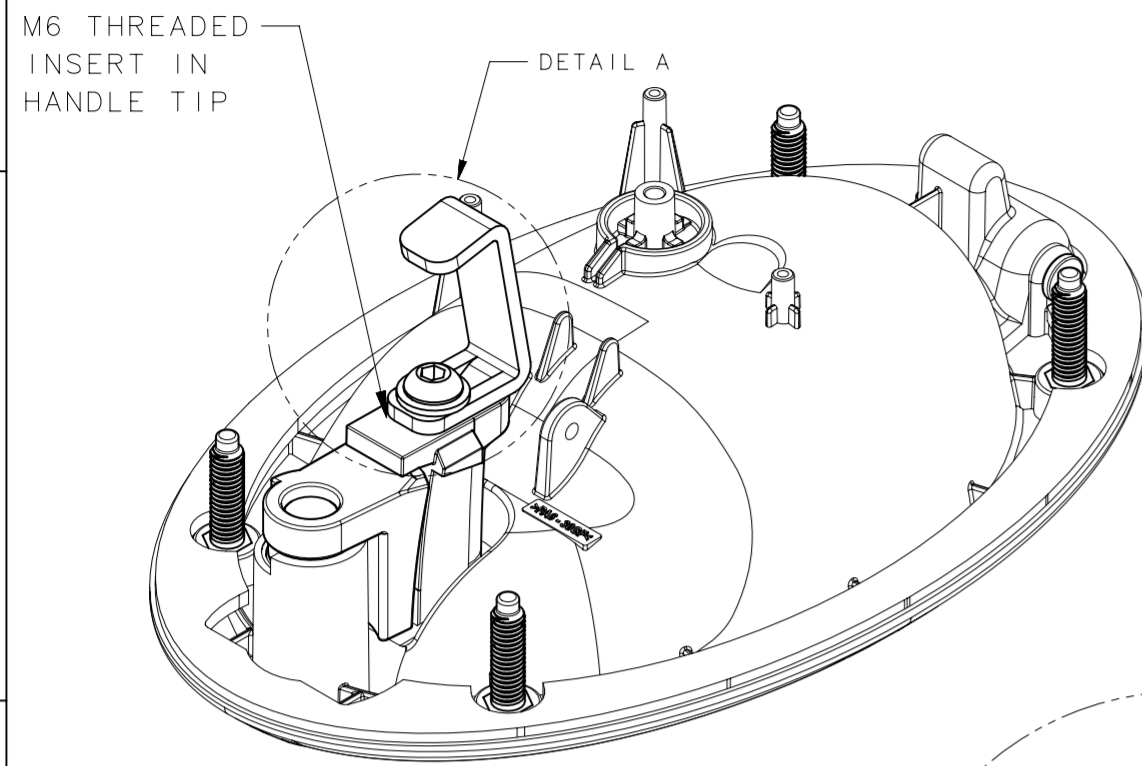
NON-LOCKING HANDLE: (Y= 0)



THIRD ANGLE PROJECTION		 CONNECT · CREATE · INNOVATE	
MILLIMETERS [IN]			
TOLERANCES UNLESS OTHERWISE NOTED		DESCRIPTION	
ALL DIMENSIONS WITHOUT TOLERANCES ARE FOR REFERENCE ONLY.		CUPPED HANDLE ACTUATOR FLUSH MOUNT - OVAL	
PROPRIETARY ITEM		SIZE	DWG NO.
EXCEPT FOR USES EXPRESSLY GRANTED IN WRITING, INFORMATION DISCLOSED HEREON IS CONFIDENTIAL AND ALL RIGHTS, PATENT AND OTHERWISE, ARE RESERVED BY SOUTHCO, INC.		A2	NX
PER ASME Y14.5M-2009		DRAWN BY	J-AC-11
		PK/AJT	DATE
			07FEB2018
		SCALE	DNS
			SHEET 1 OF 2

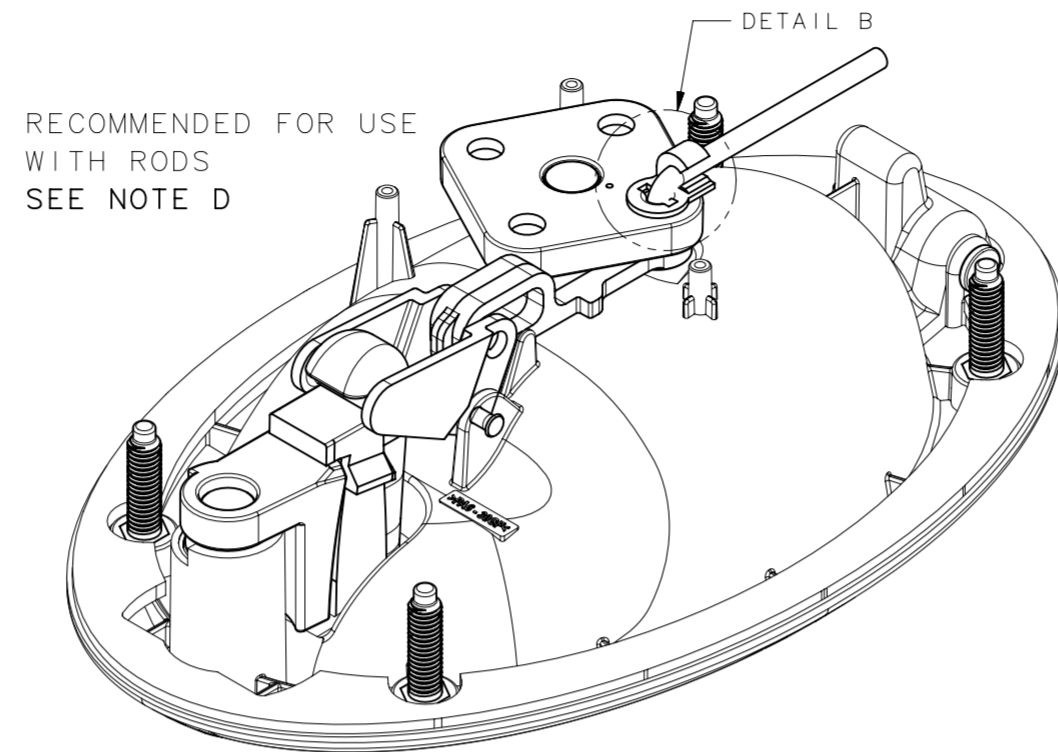
REVISION HISTORY			
REV	DATE	BY	DESCRIPTION
C	22JUL2024	KLK/RD	PRN: P2024-1264

DIRECT PULL: 30mm MAX TRAVEL



SCALE 3:4

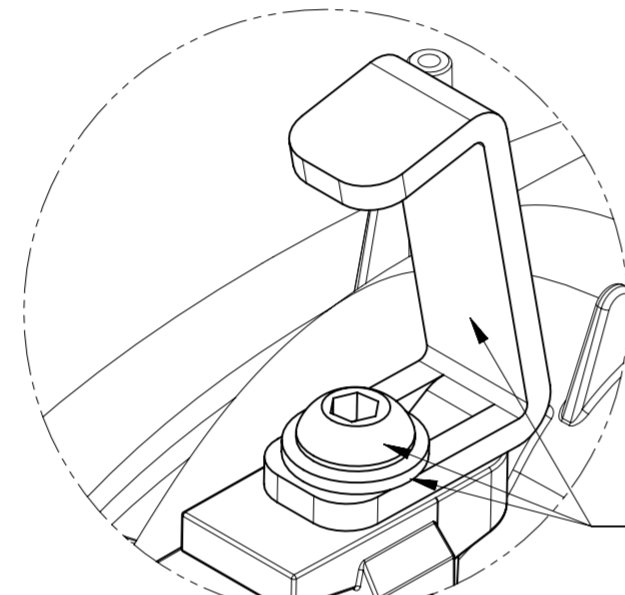
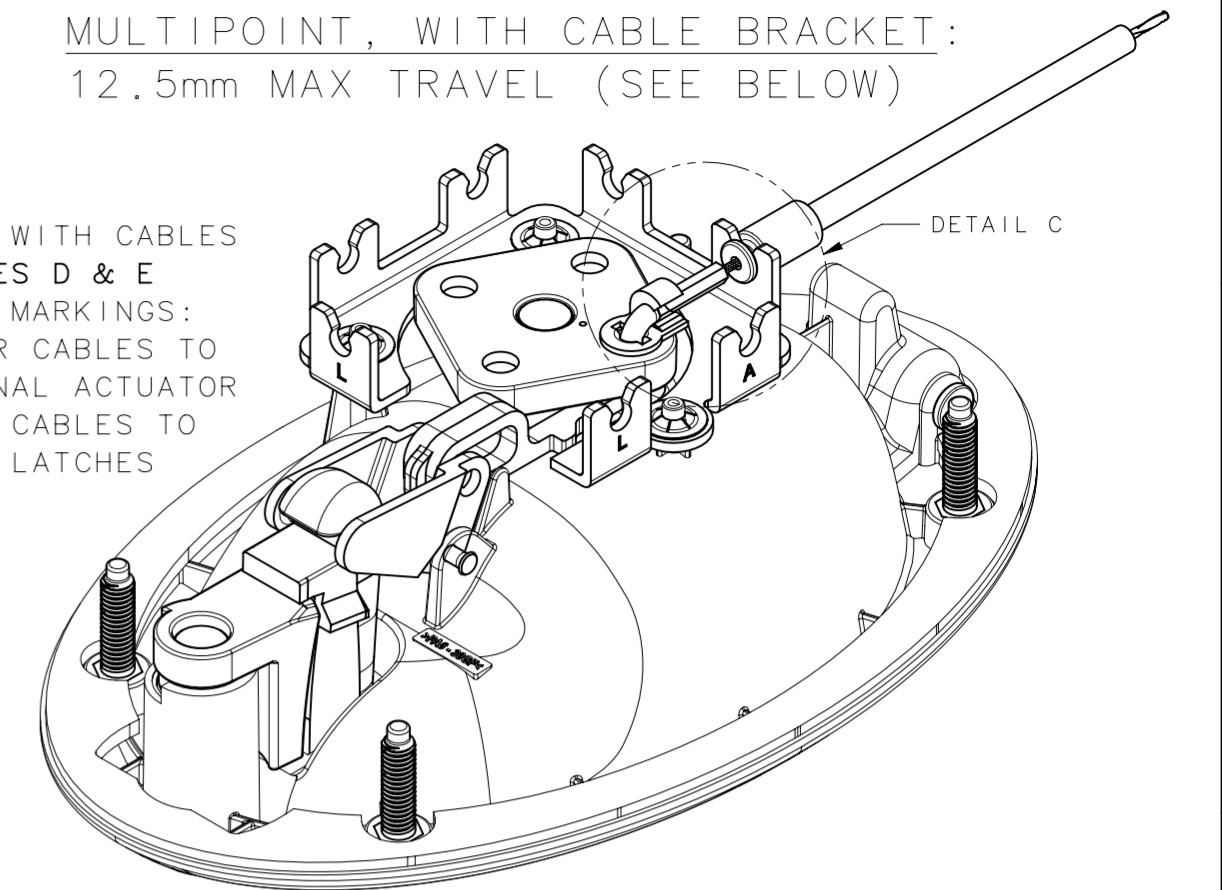
MULTIPOINT, WITHOUT CABLE BRACKET: 12.5mm MAX TRAVEL (SEE BELOW)



RECOMMENDED FOR USE WITH RODS
SEE NOTE D

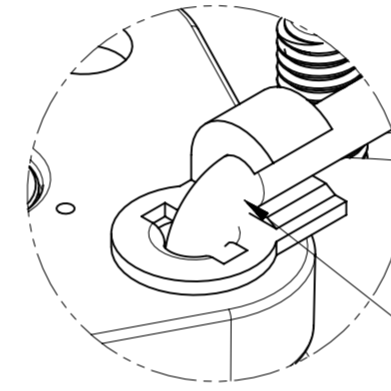
MULTIPOINT, WITH CABLE BRACKET: 12.5mm MAX TRAVEL (SEE BELOW)

FOR USE WITH CABLES
SEE NOTES D & E
BRACKET MARKINGS:
"A" FOR CABLES TO ADDITIONAL ACTUATOR
"L" FOR CABLES TO ROTARY LATCHES



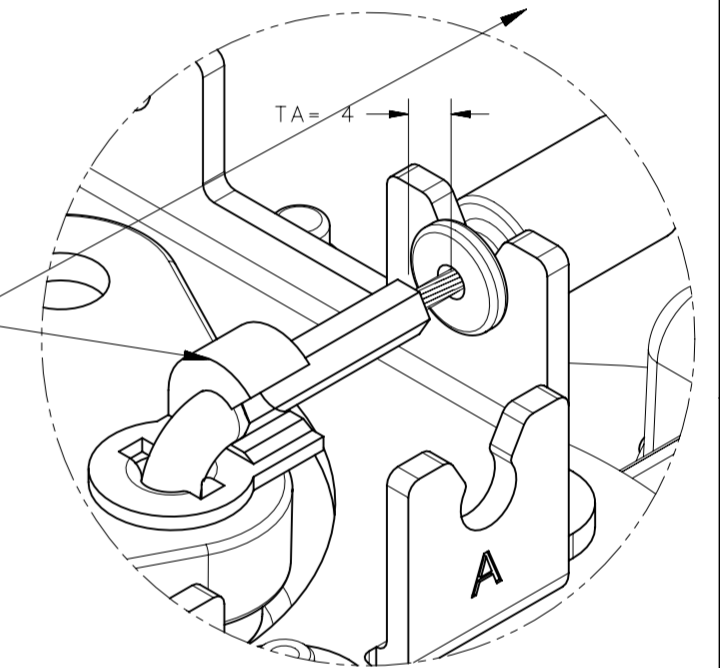
DETAIL A
SCALE 3:2

TRIGGER PULL AND M6 SCREW/WASHER NOT INCLUDED



DETAIL B
SCALE 2:1

SEE NOTE D

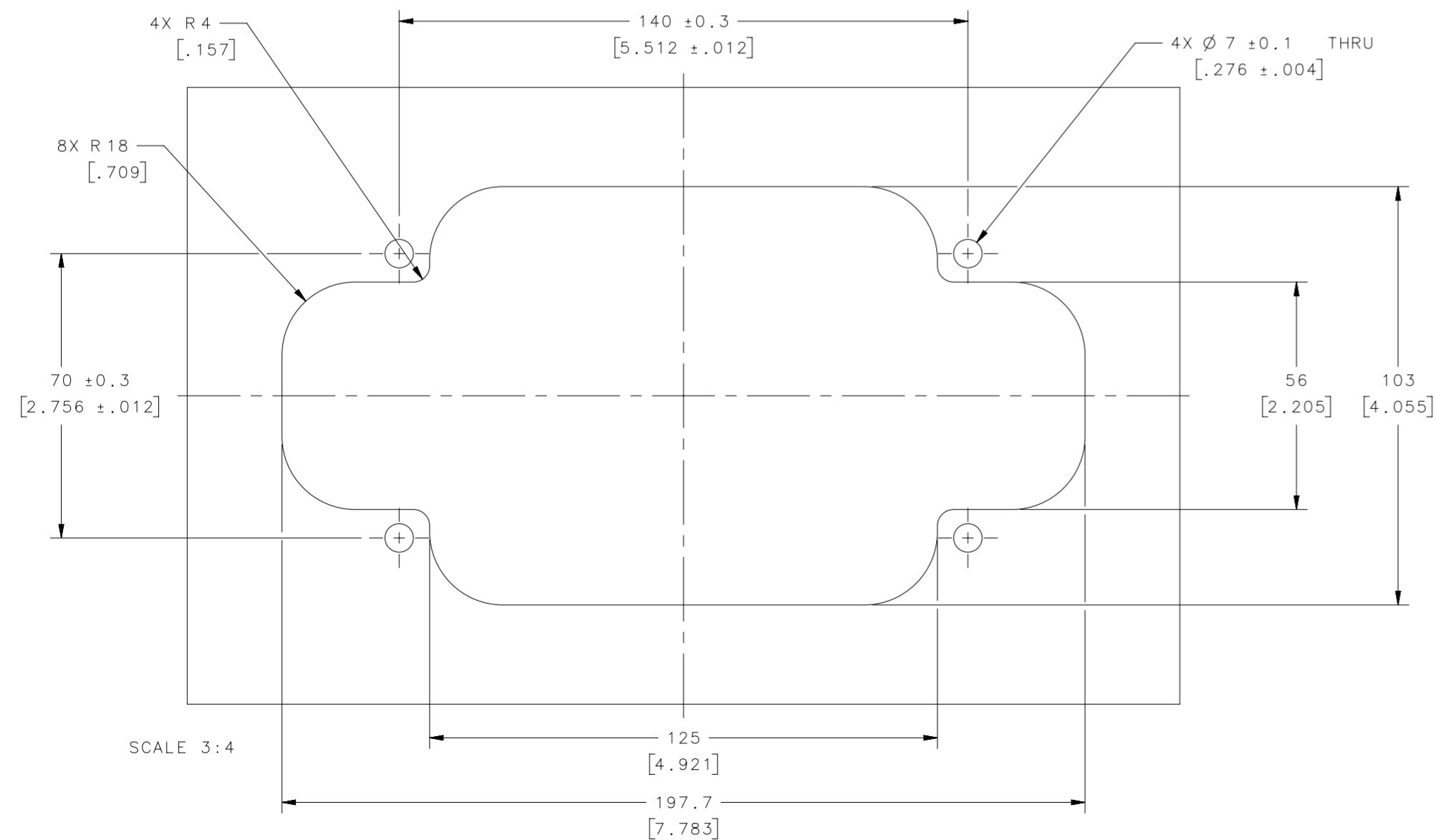


DETAIL C
SCALE 2:1

SEE NOTES D & E

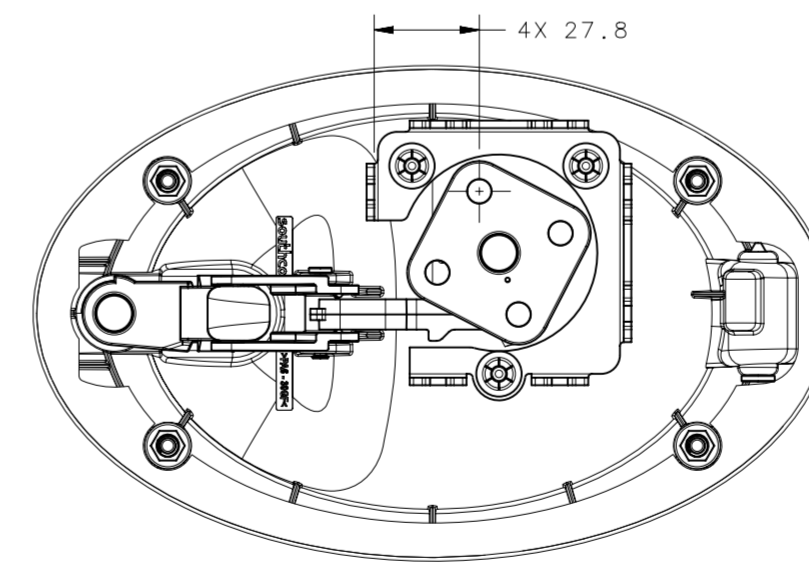
TRIGGER PULL SOLD SEPARATELY. SEE DRAWING J-R4-0-51292 FOR MORE DETAIL.

PANEL PREPARATION
MAX RECOMMENDED THICKNESS: 14mm



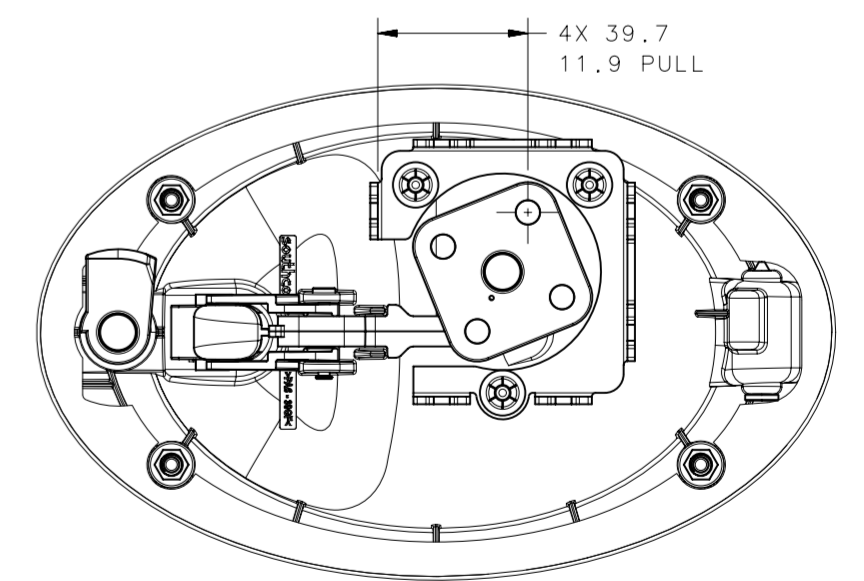
SCALE 3:4

ROTATOR PLATE TRAVEL



SCALE 1:2

CLOSED



OPEN

THIRD ANGLE PROJECTION		 CONNECT · CREATE · INNOVATE	
MILLIMETERS [IN]			
SURFACE AREA		DESCRIPTION	
VOLUME		CUPPED HANDLE ACTUATOR FLUSH MOUNT - OVAL	
PROPRIETARY ITEM		SIZE	DWG NO.
EXCEPT FOR USES EXPRESSLY GRANTED IN WRITING, INFORMATION DISCLOSED HEREON IS CONFIDENTIAL AND ALL RIGHTS, PATENT AND OTHERWISE, ARE RESERVED BY SOUTHCO, INC.		A2	NX
PER ASME Y14.5M-2009		DRAWN BY	DATE
		PK/AJT	07FEB2018
		SCALE	SHEET
		DNS	2 OF 2