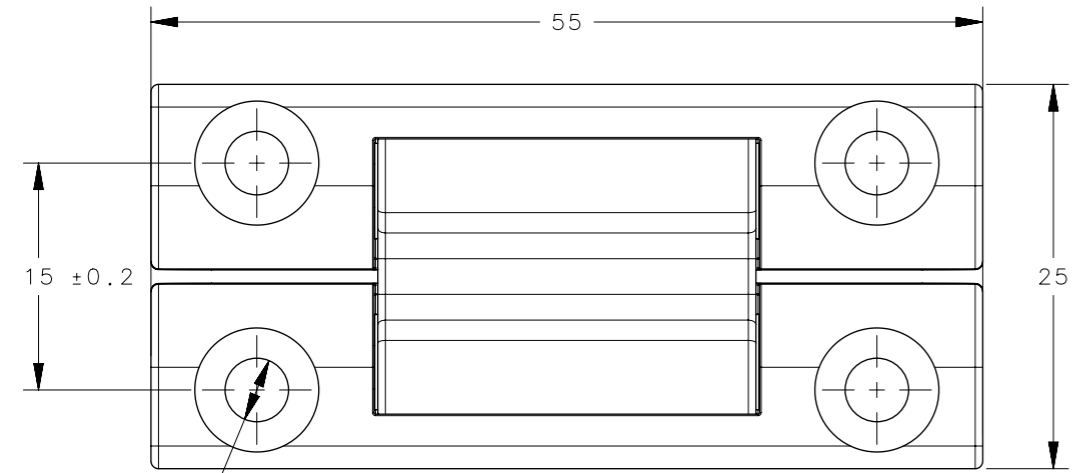
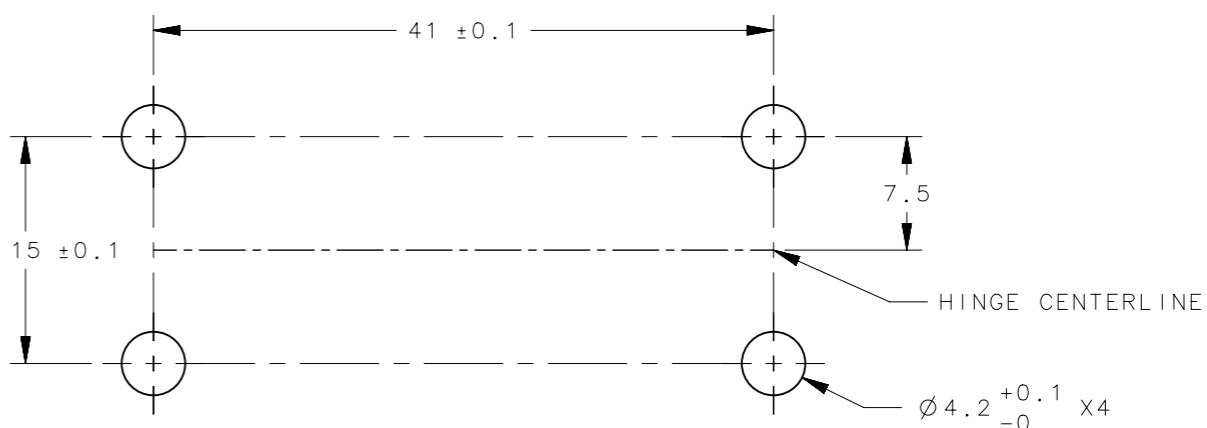
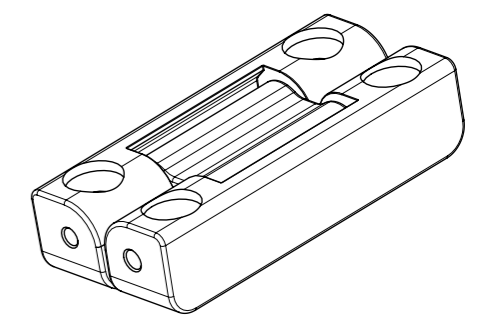
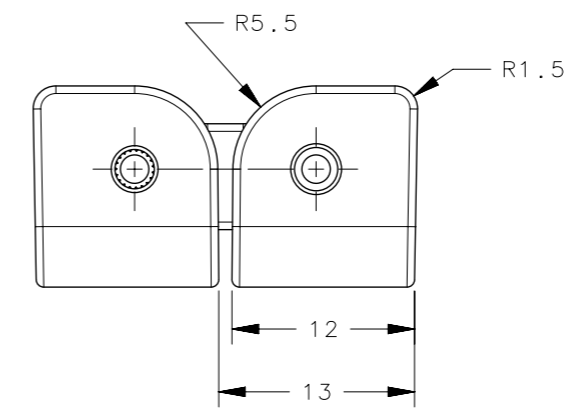


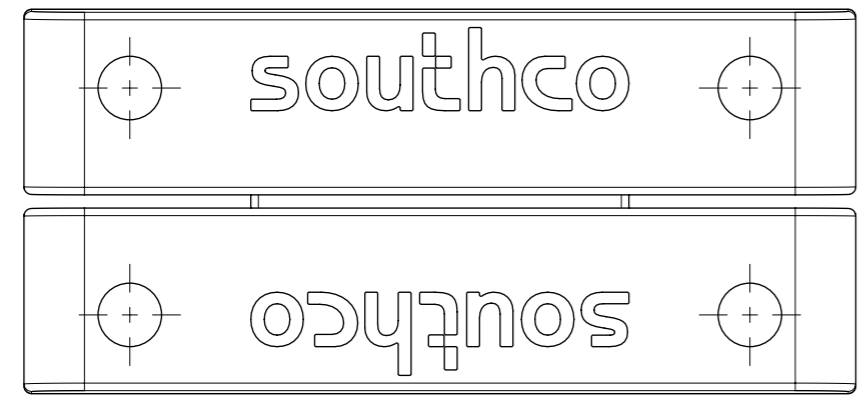
REVISION HISTORY			
REV	DATE	BY	DESCRIPTION
C	17JUN2024	AVM/VK	PRN: P2024-1032



Ø 4.2 ± 0.15 X4



PANEL PREPARATION



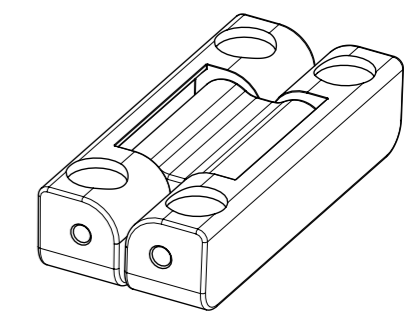
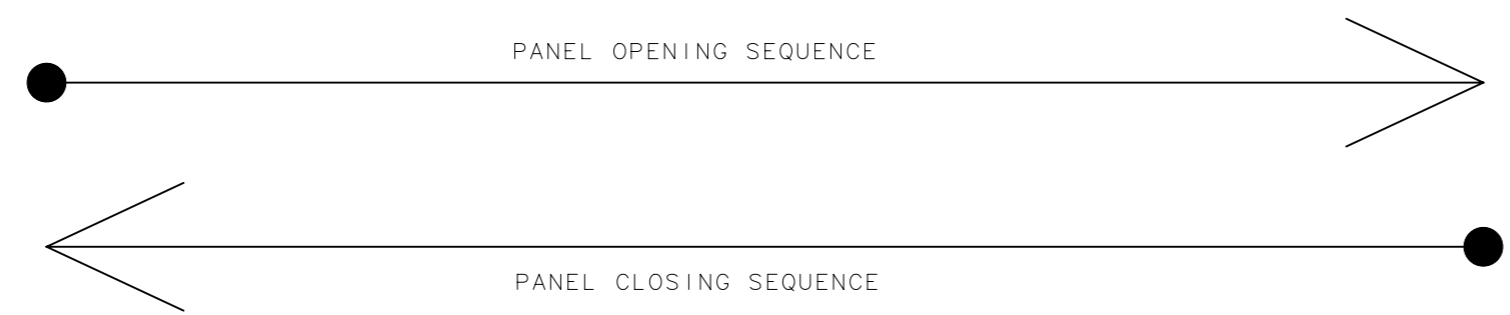
NOTES:

- A. PERFORMANCE TORQUE TOLERANCE ±20%.
- B. DESIGNED TO ACCEPT M4 OR No. 08 SCREW OR EQUIVALENT.
- C. MATERIAL:
HINGE ADAPTERS & HOUSING: MIM STAINLESS STEEL, SEE TABLE FOR FINISH,
SHAFT & PIN: STEEL,
TORQUE ELEMENT: STEEL.

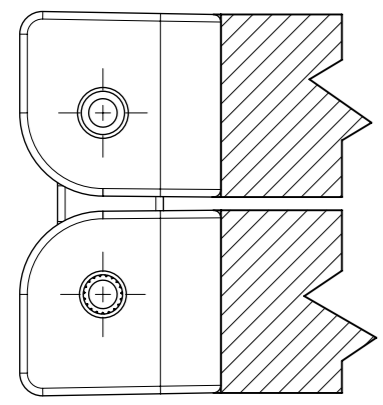
AH-2E-12XXA2-70	SILVER
AH-2E-12XXA2-50	BLACK
AH-2E-12XXA2-24	NATURAL
PART NUMBER	FINISH
AH-2E-1212A2-XX	1 N-m (8.8 in-lbs)
AH-2E-1208A2-XX	0.6 N-m (5.3 in-lbs)
AH-2E-1204A2-XX	0.3 N-m (2.6 in-lbs)
AH-2E-1200A2-XX	FREE OPERATING
PART NUMBER	SYMMETRIC TORQUE

THIRD ANGLE PROJECTION					
MILLIMETERS [IN]					
TOLERANCES UNLESS OTHERWISE NOTED	DESCRIPTION				
ALL DIMENSIONS WITHOUT TOLERANCES ARE FOR REFERENCE ONLY.	12mm BIFOLD HINGE & CONTROLLED MOTION DEVICE				
PROPRIETARY ITEM	SIZE A3	SYSTEM NX	DWG NO. J-AH-2E-12		
EXCEPT FOR USES EXPRESSLY GRANTED IN WRITING, INFORMATION DISCLOSED HEREON IS CONFIDENTIAL AND ALL RIGHTS, PATENT AND OTHERWISE, ARE RESERVED BY SOUTHCO, INC.	PER ASME Y14.5M-2009	DRAWN BY JD	DATE 21OCT2019	SCALE 2:1	SHEET 1 OF 2

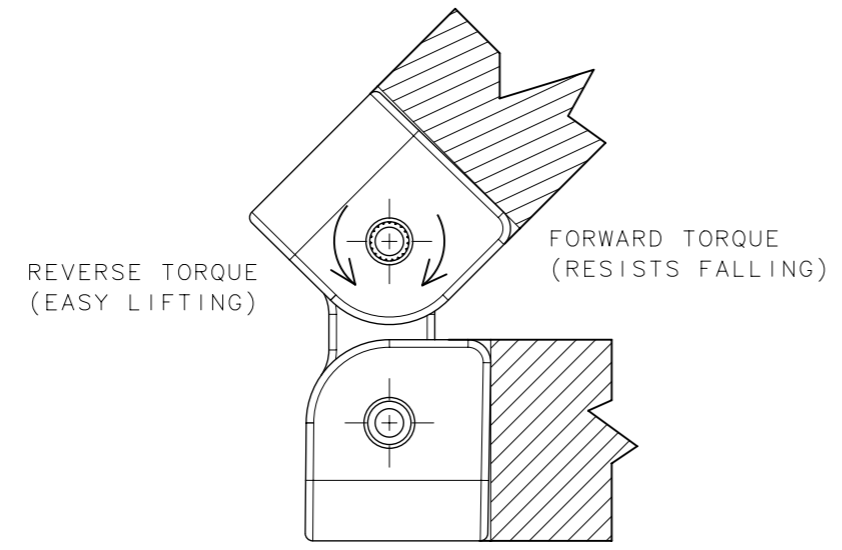
REVISION HISTORY			
REV	DATE	BY	DESCRIPTION
C	17JUN2024	AVM/VK	PRN: P2024-1032



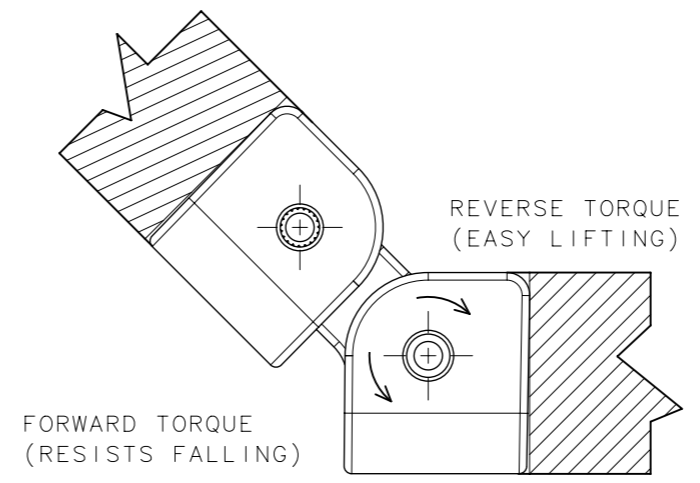
SCALE 1:1



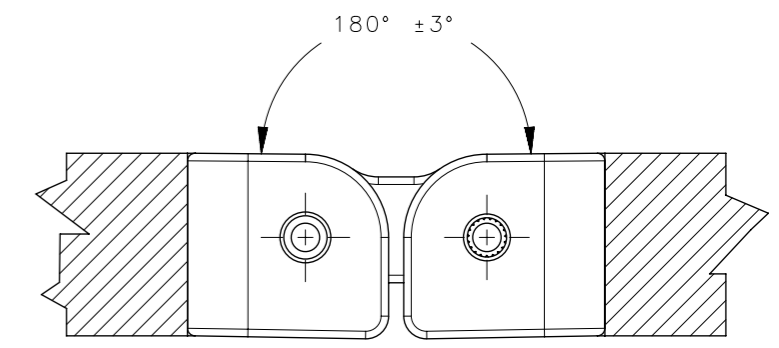
PANEL CLOSED



PANEL 45°



PANEL 135°



PANEL OPEN

CPB NUMBER 2018-0048	THIRD ANGLE PROJECTION	 CONNECT · CREATE · INNOVATE	
	MILLIMETERS [IN]		
SURFACE AREA	TOLERANCES UNLESS OTHERWISE NOTED	DESCRIPTION 12mm BIFOLD HINGE & CONTROLLED MOTION DEVICE	
VOLUME	ALL DIMENSIONS WITHOUT TOLERANCES ARE FOR REFERENCE ONLY.	SIZE A3	SYSTEM NX
PROPRIETARY ITEM <small>EXCEPT FOR USES EXPRESSLY GRANTED IN WRITING, INFORMATION DISCLOSED HEREON IS CONFIDENTIAL AND ALL RIGHTS, PATENT AND OTHERWISE, ARE RESERVED BY SOUTHCO, INC.</small>	PER ASME Y14.5M-2009	DWG NO. J-AH-2E-12	DATE 21OCT2019
		DRAWN BY JD	SCALE 2:1
			SHEET 2 OF 2