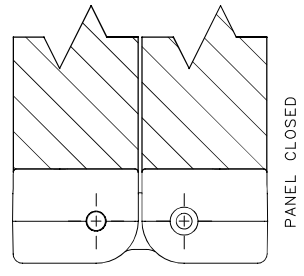
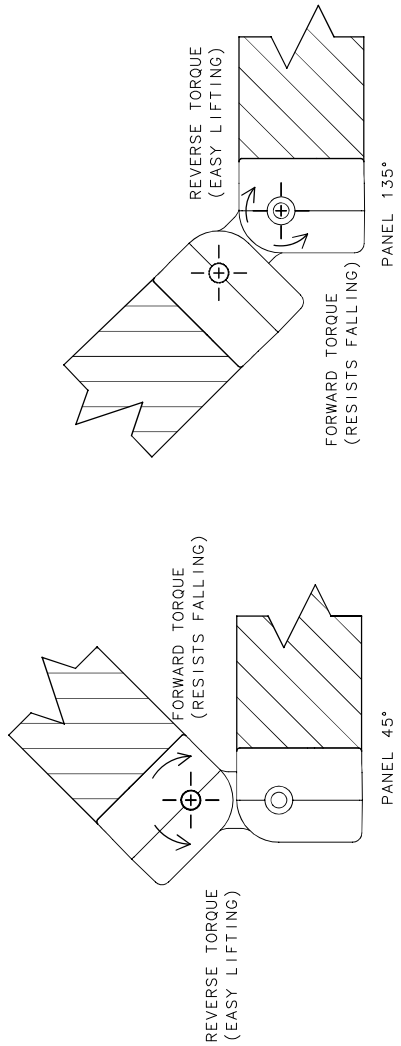
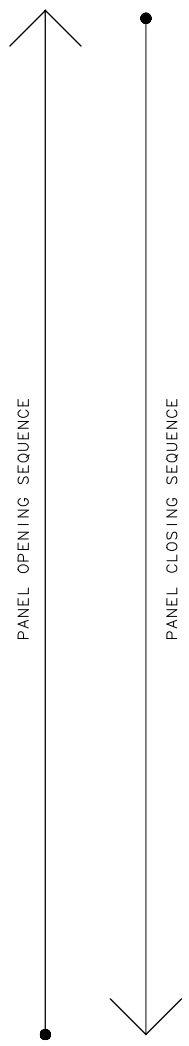
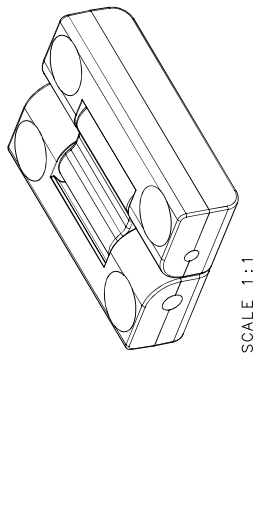



REVISION HISTORY			
REV	DATE	BY	DESCRIPTION
E	10DEC2020	JD/MJS	PRN:P2020-2275



CPB NUMBER 2016-1086		THIRD ANGLE PROJECTION		southco® CONNECT • CREATE • INNOVATE	
		MILLIMETERS [IN]			
		TOLERANCES UNLESS OTHERWISE NOTED			
		DESCRIPTION 20mm BIFOLD HINGE & CONTROLLED MOTION DEVICE			
		SIZE A3	SYSTEM NX	DWG. NO. J-AH-2E-20	
PROPRIETARY ITEM EXCEPT WHERE SHOWN OTHERWISE, THIS DRAWING IS UNCLASSIFIED AND IS NOT TO BE REPRODUCED OR TRANSMITTED IN ANY FORM OR BY ANY MEANS, ELECTRONIC OR MECHANICAL, INCLUDING PHOTOCOPYING, RECORDING, OR BY ANY INFORMATION STORAGE AND RETRIEVAL SYSTEM, WITHOUT PERMISSION IN WRITING FROM SOUTHCO, INC.		DRAWN BY JD	DATE 10OCT2018	SCALE 2:1	SHEET 2 OF 2
PER ASME Y14.5M-1994					

- NOTES:
- A. PERFORMANCE TORQUE TOLERANCE ±20%.
 - B. DESIGNED TO ACCEPT M6 OR No. 12 SCREW OR EQUIVALENT.
 - C. MATERIAL :
 - HINGE LEAVES: DIE CAST ALUMINUM, SEE TABLE FOR FINISH,
 - SHAFT & PIN: STEEL,
 - O-RINGS: BUNA-N RUBBER,
 - BEARINGS: DIE CAST ZINC.