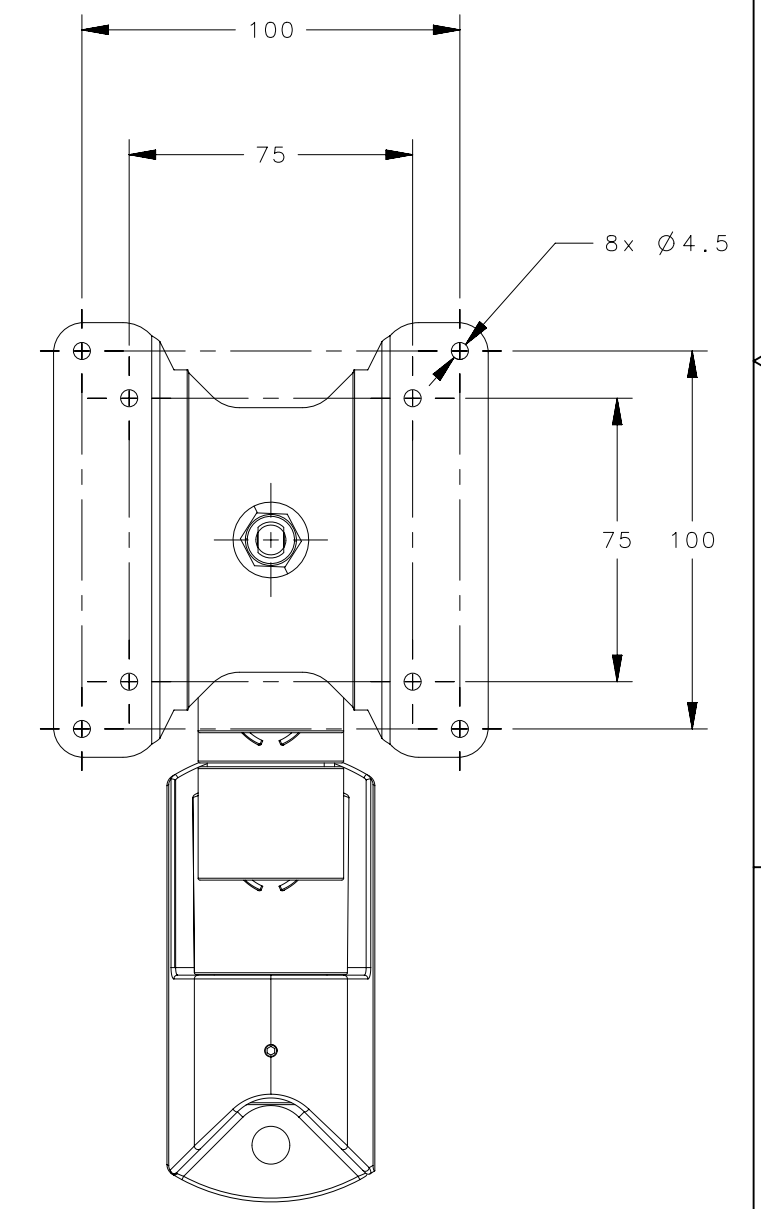
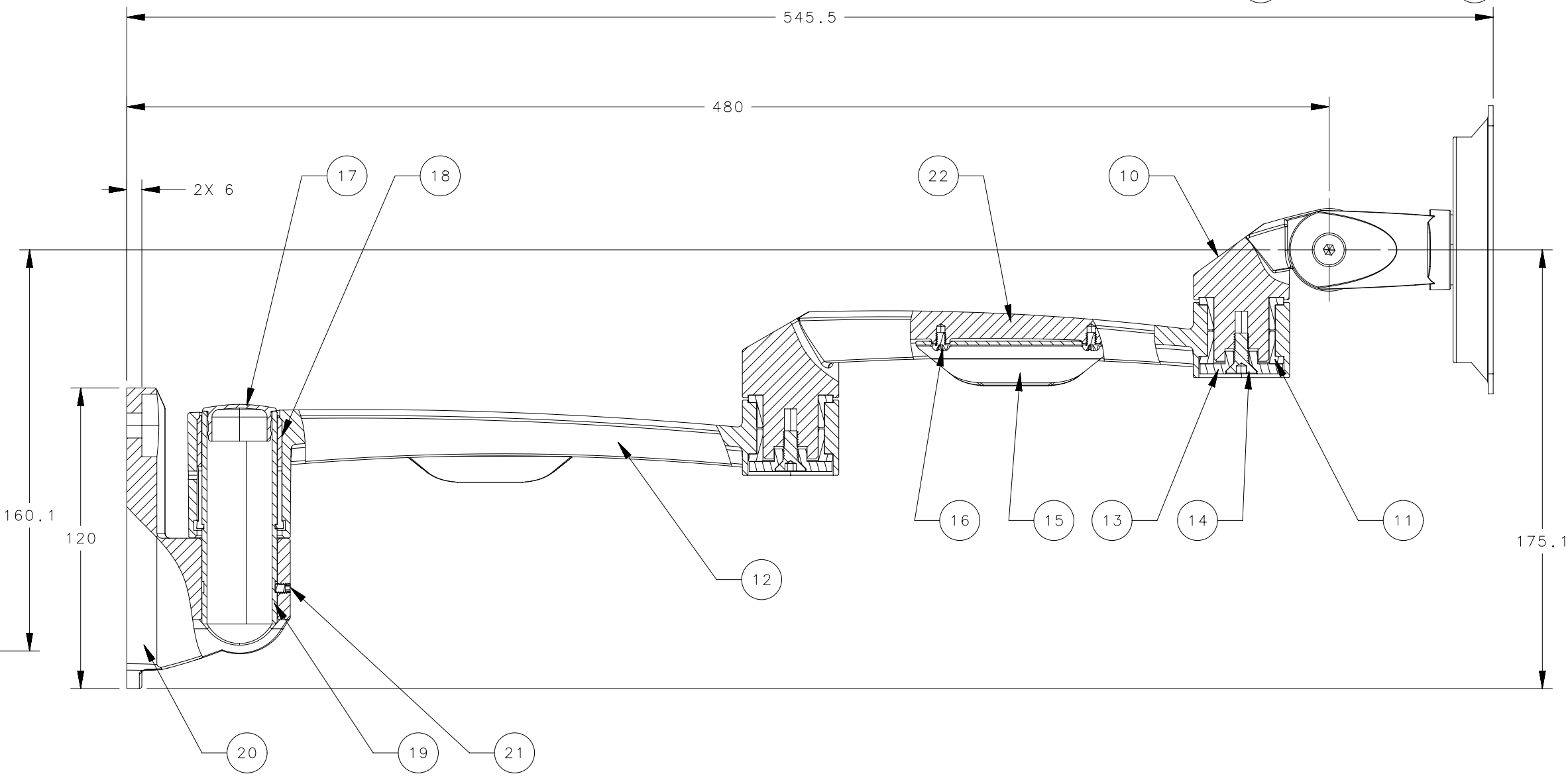
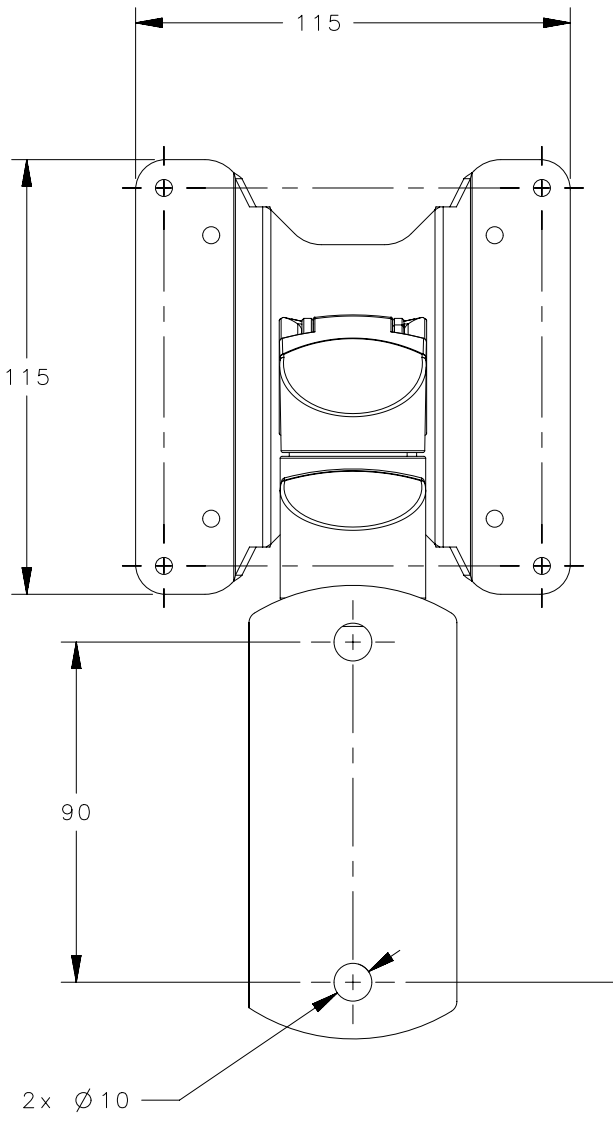
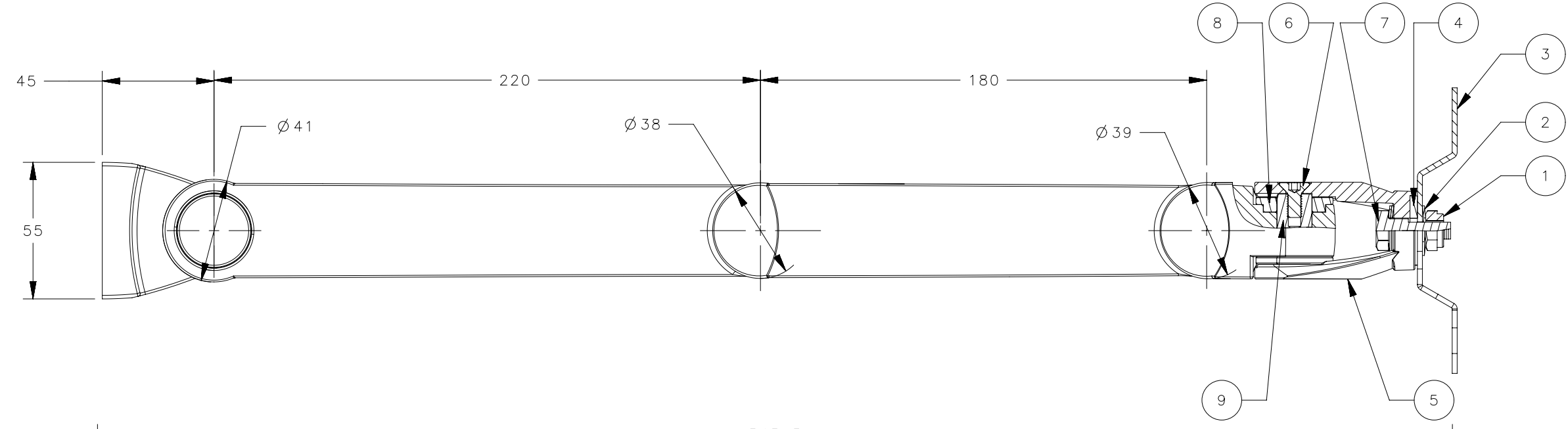
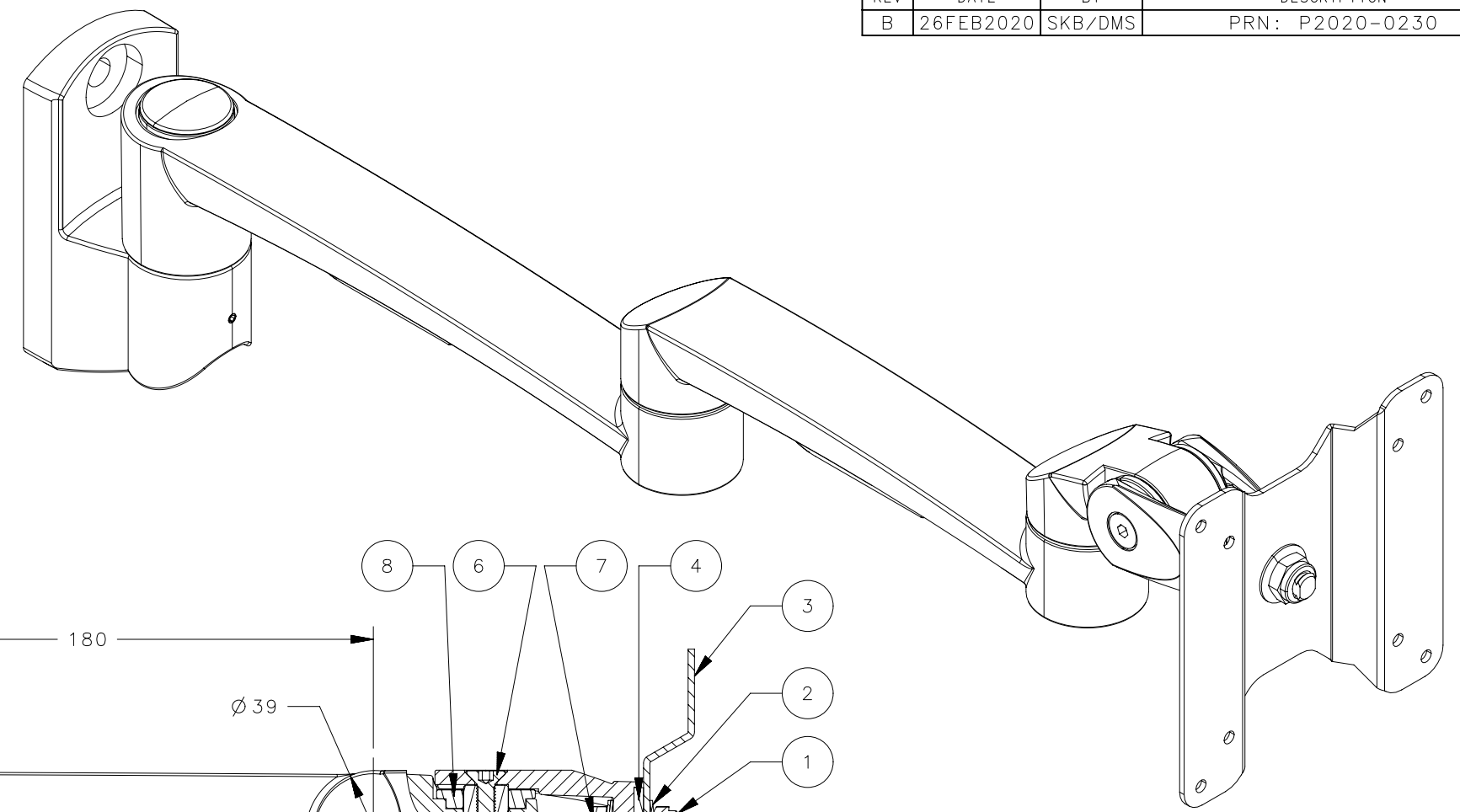


ITEM	PART	QTY	MATERIAL	FINISH	NOTES
26	INSTRUCTION FOR MOUNTING AND USE	1	N/A	N/A	NOT SHOWN
25	4mm ALLEN KEY	1	STEEL	BLACK OXIDE	LOCATED IN HARDWARE PACK
24	2mm ALLEN KEY	1	STEEL	BLACK OXIDE	LOCATED IN HARDWARE PACK
23	M4 x 10Lg SCREW	4	STEEL	ZINC PLATED	LOCATED IN HARDWARE PACK
22	SHORT ARM	1	DIE CAST ALUMINIUM	PAINTED	
21	M4 x 6Lg SET SCREW	2	STEEL	ZINC PLATED	
20	WALL MOUNT	1	DIE CAST ALUMINIUM	PAINTED	
19	CONNECTING SLEEVE	1	STEEL	ZINC PLATED	
18	LONG BUSHING	1	POM	NATURAL	
17	END CAP	1	POLYPROPYLENE	NATURAL	
16	M4 x 5Lg ROUND HEAD SCREW	4	STEEL	ZINC PLATED	
15	CABLE MANAGEMENT	2	POLYPROPYLENE	NATURAL	
14	M6 x 20Lg CSK HEAD SCREW	2	STEEL	ZINC PLATED	
13	CAP	2	DIE CAST ZINC	PAINTED	
12	LONG ARM	1	ALUMINIUM	PAINTED	
11	BUSHING	4	POM		
10	HOUSING	1	DIE CAST ALUMINIUM	PAINTED	
9	PIN	1	DIE CAST ALUMINIUM	PAINTED	
8	WASHER	2	COPPER	NATURAL	
7	3/8" HEX BOLT	1	ALLOY STEEL	ZINC PLATED	
6	M6 x 14Lg CSK HEAD SCREW	2	STEEL	PAINTED	
5	ADAPTER	1	DIE CAST ALUMINIUM	PAINTED	
4	Ø28 WASHER	1	NYLON	NATURAL	
3	MONITOR MOUNTING PLATE	1	STEEL	PAINTED	
2	Ø10 WASHER	3	STEEL	ZINC PLATED	
1	3/8" NYLON INSERT NUT	1	STEEL	ZINC PLATED	

REVISION HISTORY			
REV	DATE	BY	DESCRIPTION
B	26FEB2020	SKB/DMS	PRN: P2020-0230

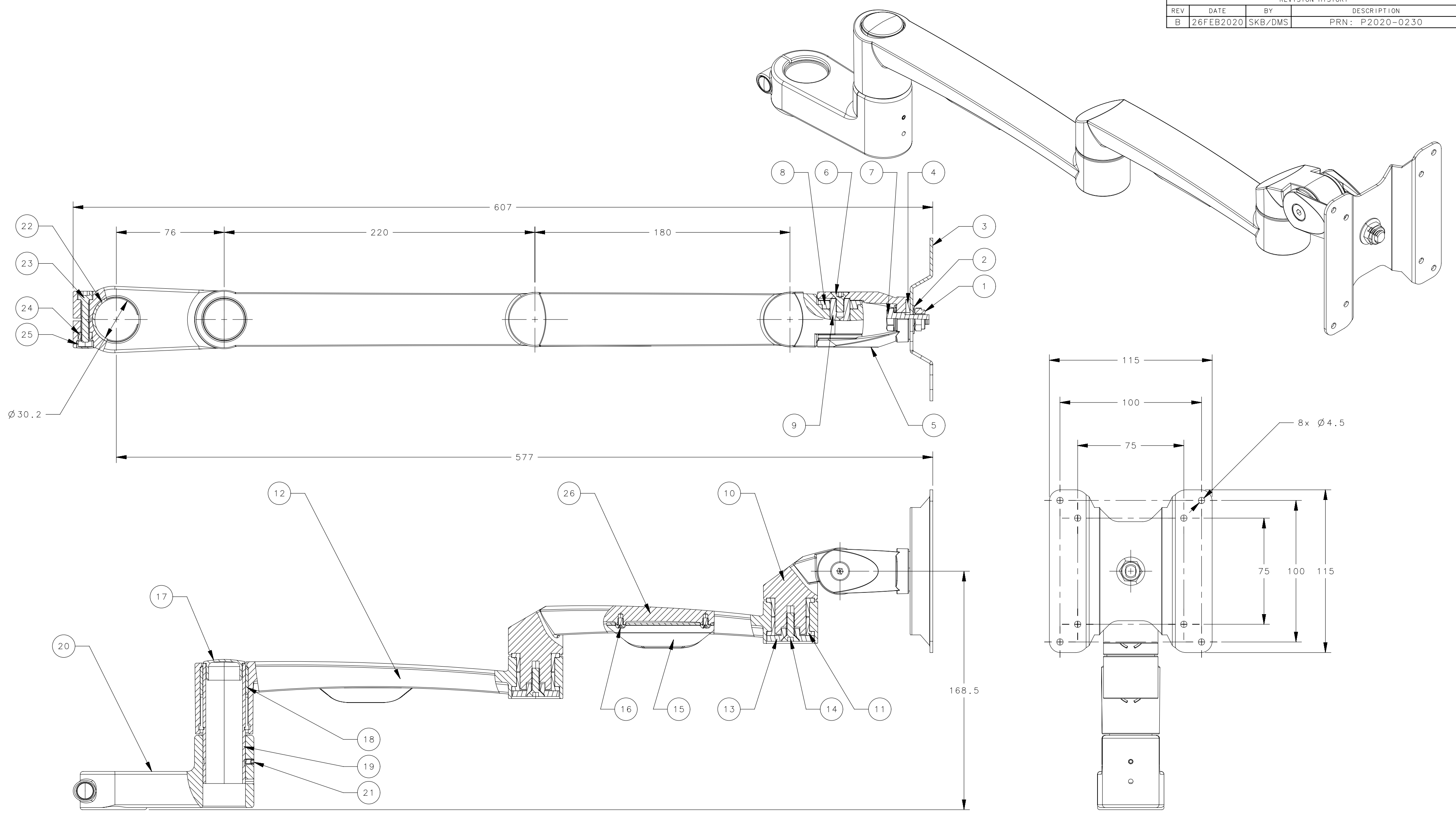


- NOTES:
- ALL EXTERIOR SURFACES CLASS C AND ALL INTERIOR SURFACES CLASS D PER SOUTHCO FINISH SPECIFICATION S-121.
 - PART SHOWN FULLY ASSEMBLED. SOME CUSTOMER ASSEMBLY MAY BE REQUIRED.
 - PART PACKAGED ONE PER BOX WITH INSTRUCTION FOR USE AND MOUNTING, ONE 4mm AND ONE 2mm ALLEN KEY.

AV-B30-41D243-50	BLACK
AV-B30-41D243-70	SILVER
AV-B30-41D243-76	WHITE
SOUTHCO PART NUMBER	COLOUR

CPB NUMBER	THIRD ANGLE PROJECTION		southco CONNECT · CREATE · INNOVATE	
	MILLIMETERS [IN]			
	TOLERANCES UNLESS OTHERWISE NOTED		DESCRIPTION HINGE & CONTROLLED MOTION DEVICE WALL MOUNT - DOUBLE ARM	
	ALL DIMENSIONS WITHOUT TOLERANCES ARE FOR REFERENCE ONLY.		SIZE SYSTEM C NX	DWG NO. J-AV-B30-41D
PROPRIETARY ITEM <small>EXCEPT FOR USES EXPRESSLY GRANTED IN WRITING, INFORMATION DISCLOSED HEREON IS CONFIDENTIAL AND ALL RIGHTS, PATENT AND OTHERWISE, ARE RESERVED BY SOUTHCO, INC.</small>	PER ASME Y14.5M-1994	DRAWN BY SKB	DATE 20DEC2019	SCALE SHEET 1:1 1 OF 2

REVISION HISTORY			
REV	DATE	BY	DESCRIPTION
B	26FEB2020	SKB/DMS	PRN: P2020-0230



ITEM	PART	QTY	MATERIAL	FINISH	NOTES
31	INSTRUCTION FOR MOUNTING AND USE	1	N/A	N/A	NOT SHOWN
30	5mm ALLEN KEY	1	STEEL	BLACK OXIDE	LOCATED IN HARDWARE PACK
29	4mm ALLEN KEY	1	STEEL	BLACK OXIDE	LOCATED IN HARDWARE PACK
28	2mm ALLEN KEY	1	STEEL	BLACK OXIDE	LOCATED IN HARDWARE PACK
27	M4 x 10Lg SCREW	4	STEEL	ZINC PLATED	LOCATED IN HARDWARE PACK
26	SHORT ARM	1	DIE CAST ALUMINIUM	PAINTED	
25	NUT CAP	1	POLYCARBONATE	NATURAL	
24	M6 NYLON INSERT NUT	1	STEEL	ZINC PLATED	
23	M6 x 30Lg CAP HEAD SCREW	1	STEEL	ZINC PLATED	
22	BUSHING	1	POM	NATURAL	
21	M4 x 6Lg SET SCREW	2	STEEL	ZINC PLATED	
20	POLE MOUNT	1	DIE CAST ALUMINIUM	PAINTED	
19	CONNECTING SLEEVE	1	STEEL	ZINC PLATED	
18	LONG BUSHING	1	POM	NATURAL	
17	END CAP	1	POLYPROPYLENE	NATURAL	
16	M4 x 5Lg ROUND HEAD SCREW	4	STEEL	ZINC PLATED	
15	CABLE MANAGEMENT	2	POLYPROPYLENE	NATURAL	
14	M6 x 20Lg CSK HEAD SCREW	2	STEEL	ZINC PLATED	
13	CAP	2	DIE CAST ZINC	PAINTED	
12	LONG ARM	1	DIE CAST ALUMINIUM	PAINTED	
11	BUSHING	4	POM		
10	HOUSING	1	DIE CAST ALUMINIUM	PAINTED	
9	PIN	1	DIE CAST ALUMINIUM	PAINTED	
8	WASHER	2	COPPER	NATURAL	
7	3/8" HEX BOLT	1	ALLOY STEEL	ZINC PLATED	
6	M6 x 14Lg CSK HEAD SCREW	2	STEEL	PAINTED	
5	ADAPTER	1	DIE CAST ALUMINIUM	PAINTED	
4	Ø28 WASHER	1	NYLON	NATURAL	
3	MONITOR MOUNTING PLATE	1	STEEL	PAINTED	
2	Ø10 WASHER	3	STEEL	ZINC PLATED	
1	3/8" NYLON INSERT NUT	1	STEEL	ZINC PLATED	
1	PART	QTY	MATERIAL	FINISH	NOTES

NOTES:

1. ALL EXTERIOR SURFACES CLASS C AND ALL INTERIOR SURFACES CLASS D PER SOUTHCO FINISH SPECIFICATION S-121.
2. PART SHOWN FULLY ASSEMBLED. SOME CUSTOMER ASSEMBLY MAY BE REQUIRED.
3. PART PACKAGED ONE PER BOX WITH INSTRUCTION FOR USE AND MOUNTING, ONE 5mm, ONE 4mm AND ONE 2mm ALLEN KEY.
4. FOR MATING POLE MOUNTS SEE PART NUMBERS AV-B30-40XC6 AND AV-B30-40XG6

AV-B30-41D263-50	BLACK
AV-B30-41D263-70	SILVER
AV-B30-41D263-76	WHITE
SOUTHCO PART NUMBER	COLOR

CPB NUMBER	THIRD ANGLE PROJECTION		southco CONNECT · CREATE · INNOVATE
	MILLIMETERS [IN]		
	TOLERANCES UNLESS OTHERWISE NOTED		DESCRIPTION HINGE & CONTROLLED MOTION DEVICE POLE MOUNT - DOUBLE ARM
	ALL DIMENSIONS WITHOUT TOLERANCES ARE FOR REFERENCE ONLY.	SIZE SYSTEM C NX	DWG NO. J-AV-B30-41D
PROPRIETARY ITEM EXCEPT FOR USES EXPRESSLY GRANTED IN WRITING, INFORMATION DISCLOSED HEREIN IS CONFIDENTIAL AND ALL RIGHTS, PATENT AND OTHERWISE, ARE RESERVED BY SOUTHCO, INC.	PER ASME Y14.5M-1994	DRAWN BY SKB	DATE 20DEC2019
		SCALE 1:1	SHEET 2 OF 2