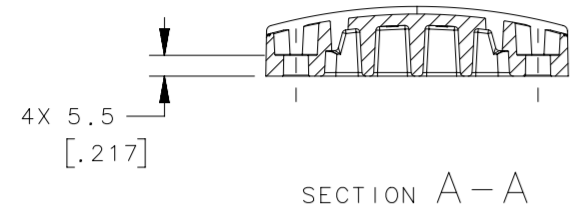
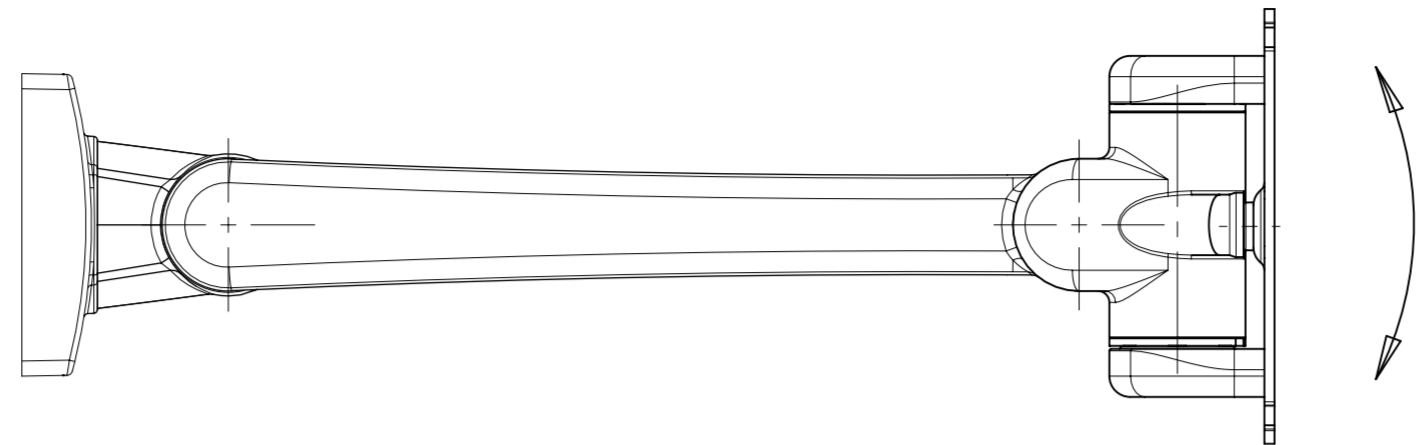


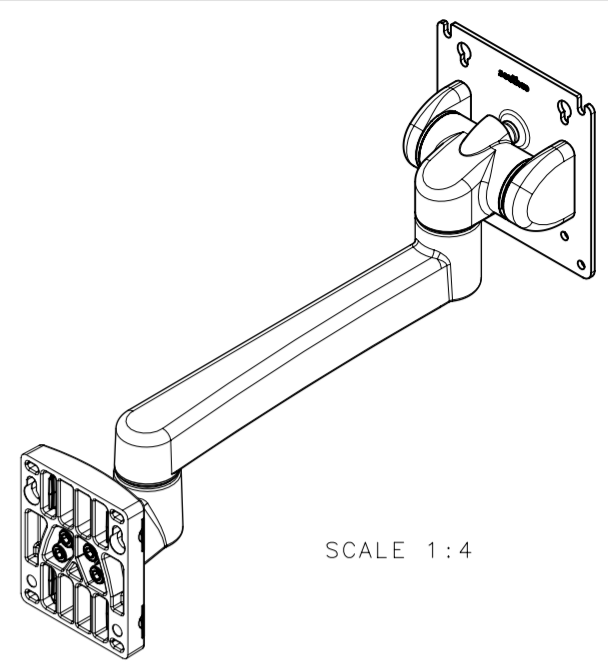
REVISION HISTORY			
REV	DATE	BY	DESCRIPTION
B	26MAY2020	GEA/DMS	PRN: P2020-0959



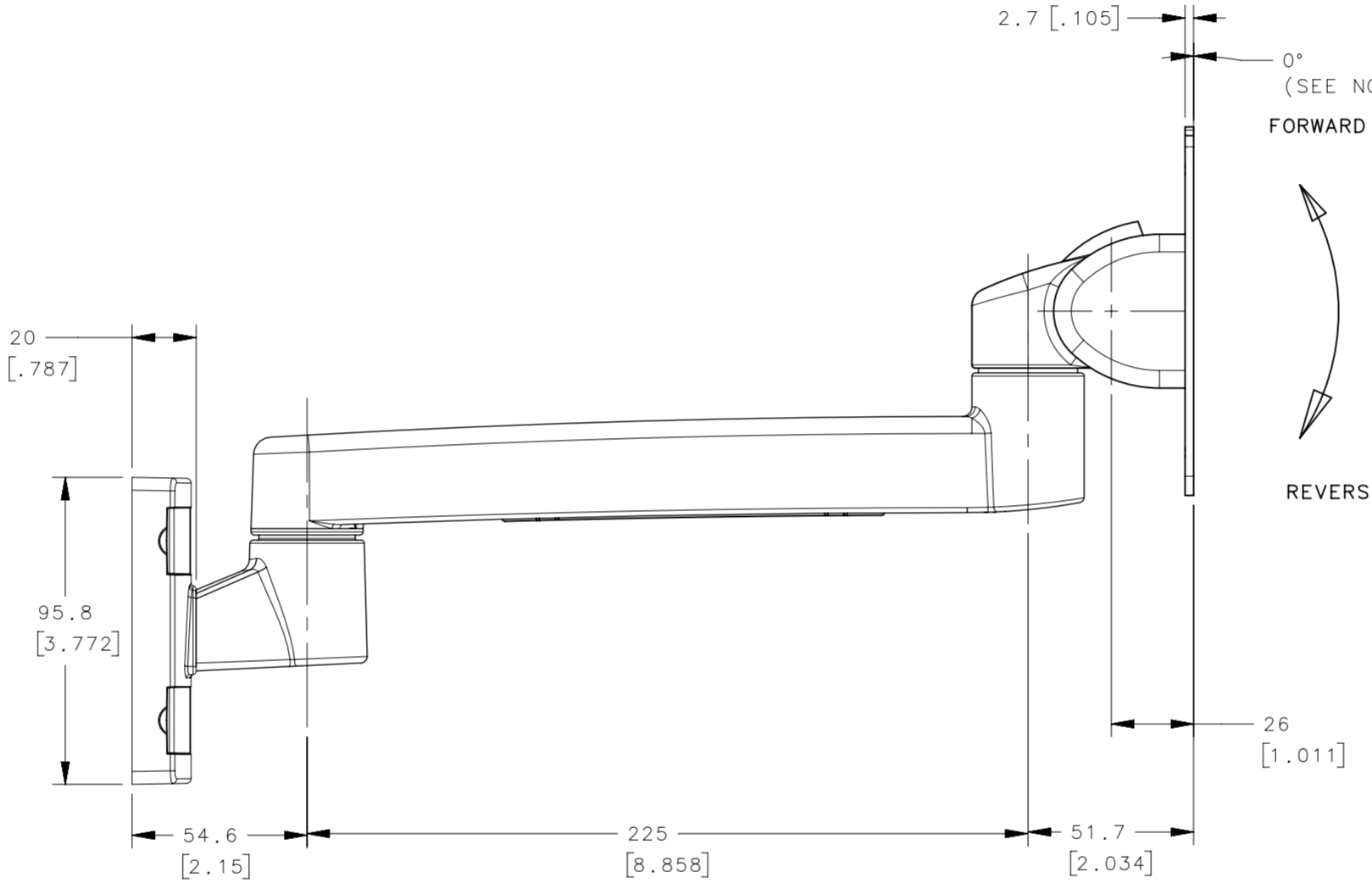
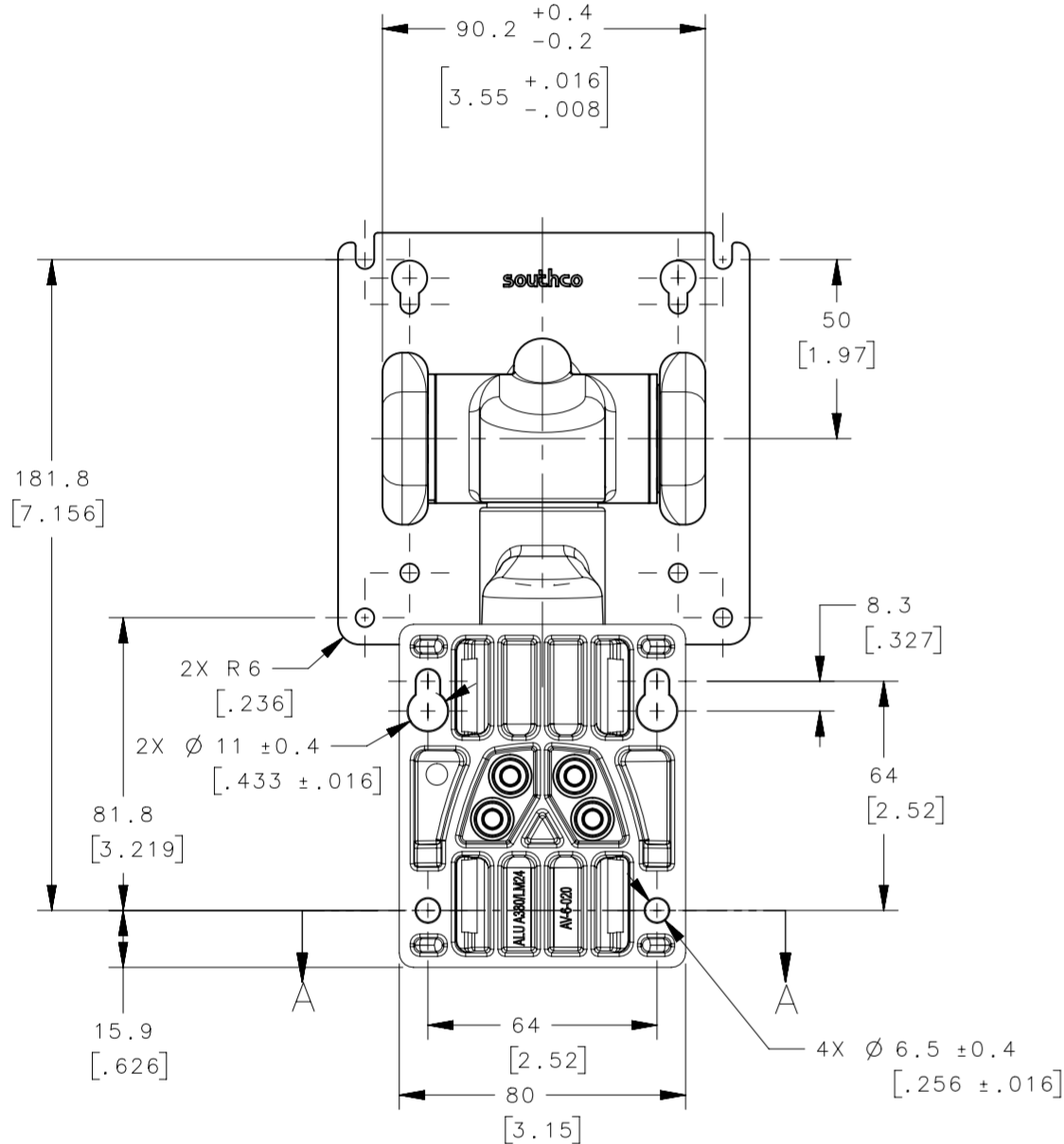
ARM PIVOT
±95°
FROM
POSITION
SHOWN



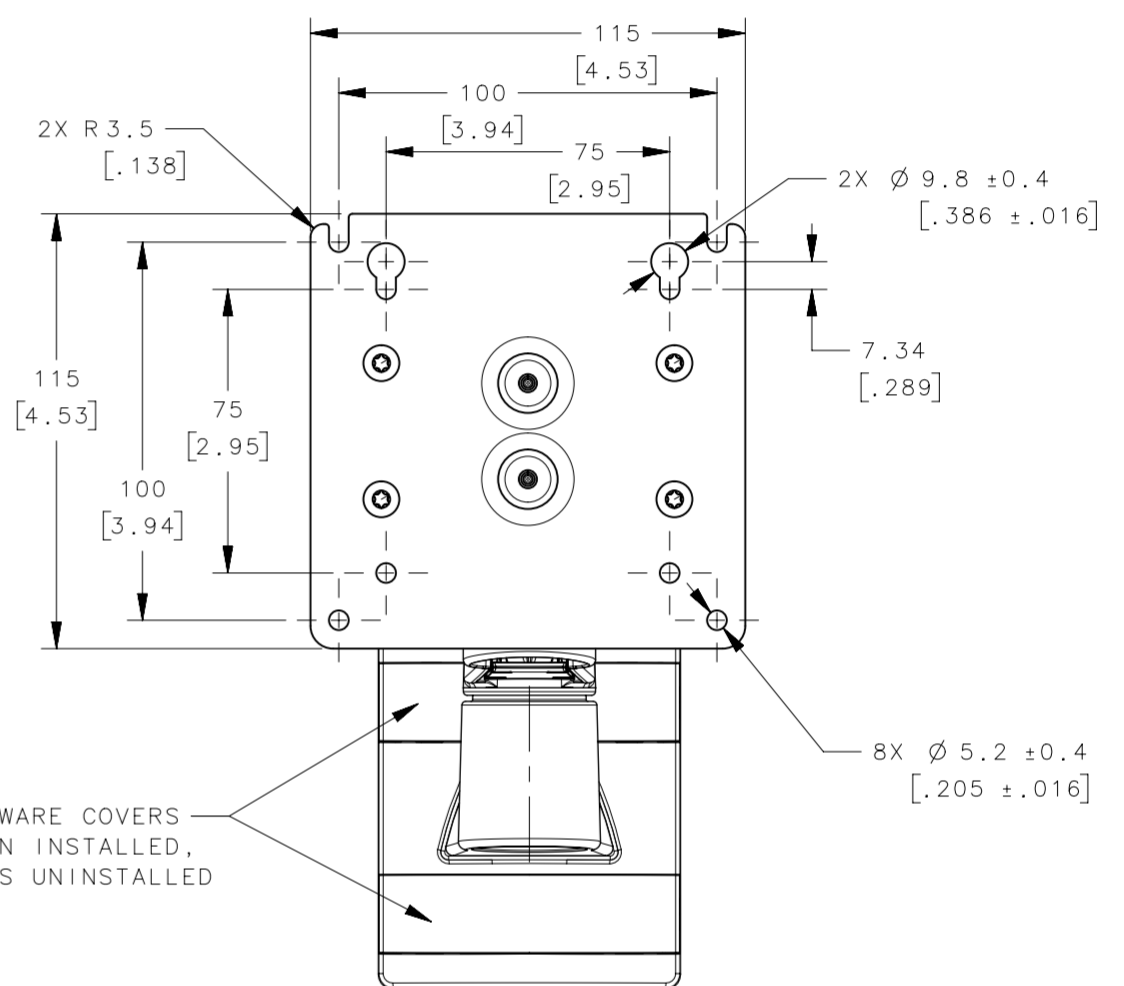
DISPLAY SWIVEL
±95° RANGE
OF MOTION FROM
POSITION SHOWN



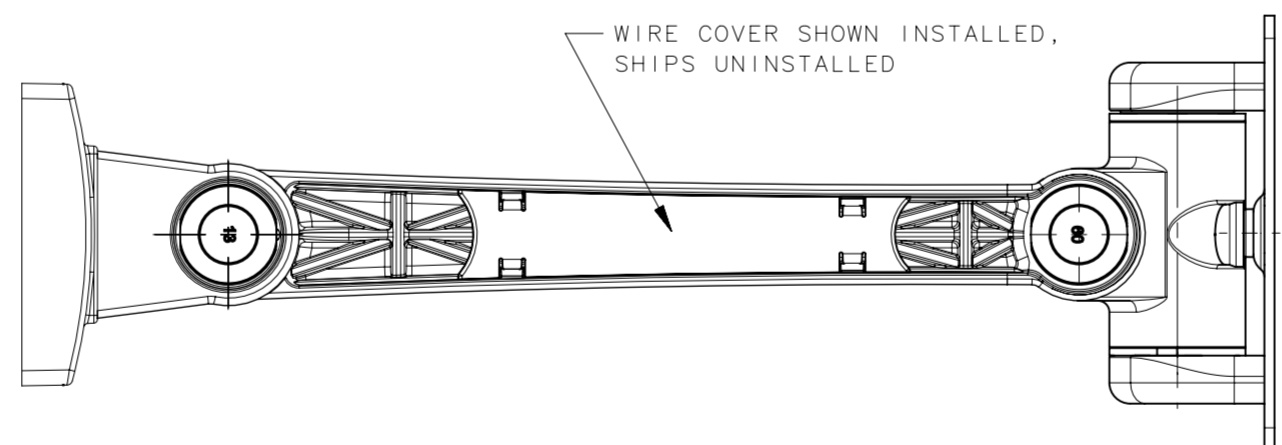
SCALE 1:4



TILT
±20°
FROM
POSITION
SHOWN

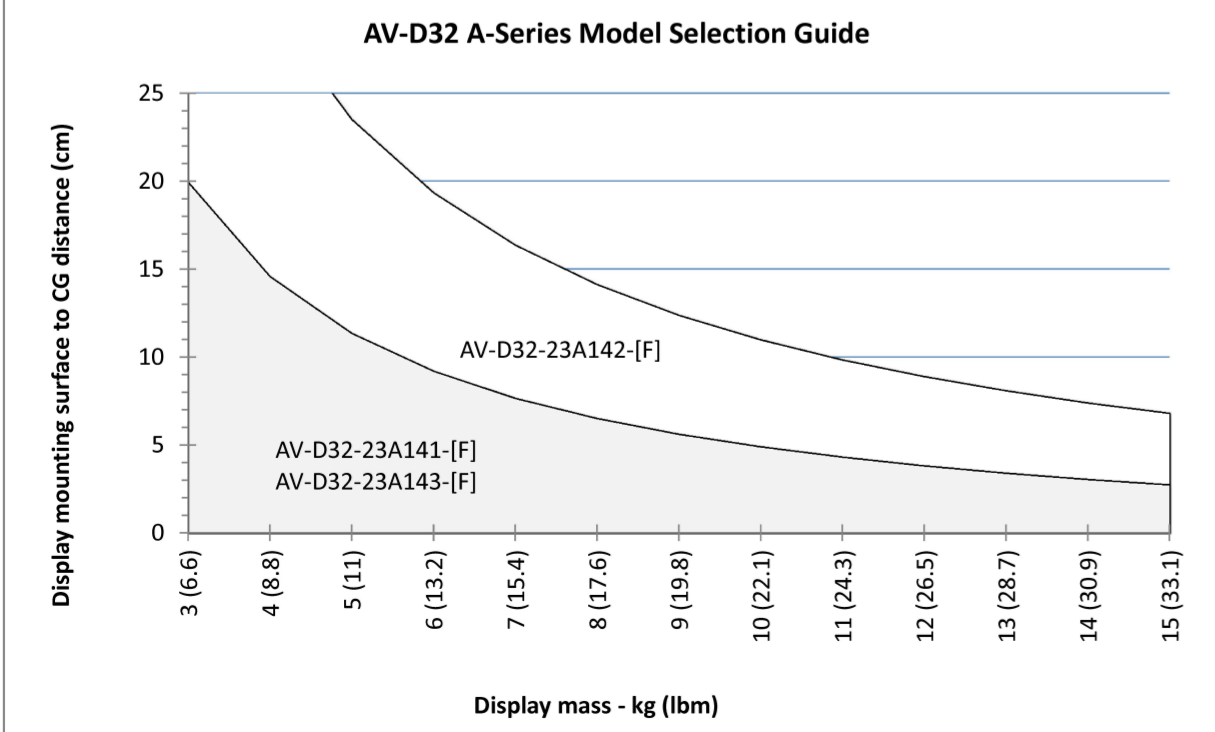


HARDWARE COVERS
SHOWN INSTALLED,
SHIPS UNINSTALLED



NOTES:

1. FINISH PER SOUTHCO COSMETIC SPECIFICATION S-121 CLASS C EXTERIOR POWDER COATED SURFACES.
2. TILT TORQUE MEASURED WITH VESA DISPLAY PLATE IN THE VERTICAL (0° ± 5°) POSITION WHEN TILTING IN THE REVERSE DIRECTION. THE TILT TORQUE VARIES WITH THE COUNTERBALANCE (WHEN EQUIPPED) IN THE FORWARD AND REVERSE DIRECTIONS.
3. DISPLAY MOUNTING PLATE TO HOUSING ANGULAR FREE PLAY TO BE 1.5° MAXIMUM.
4. MATERIALS AND FINISHES:
ADAPTERS: DIE CAST ALUMINUM, ANODIZED AND POWDER COATED
ARM, TILT HOUSING, SWIVEL HOUSING AND ARM MOUNT PLATE: DIE CAST ALUMINUM, POWDER COATED
TILT SLEEVE AND THRUST WASHER: ACETAL, BLACK
COILED PIN: STEEL, PHOSPHATE COATED
TILT SHAFT, TORQUE ELEMENTS AND STOP WASHER: STEEL, NATURAL FINISH
TORSION SPRING: CARBON STEEL, NICKEL PLATED
DISPLAY SCREWS: STEEL, BLACK OXIDE
DISPLAY STOPS: POLYETHYLENE, WHITE
SWIVEL SHAFT: STAINLESS STEEL AND NYLON
WIRE COVER AND HARDWARE COVERS: PC/ABS, BLACK
M6 SCREWS: ALLOY STEEL, BLACK OXIDE
M6 FLAT WASHERS: STEEL, ZINC PLATED
LABEL: VINYL WITH POLYESTER ADHESIVE
LUBRICANT: HYDROCARBON BASE



PART NUMBER	REVERSE TILT TORQUE N*m (lbf*in)	FORWARD TILT TORQUE N*m (lbf*in)	DISPLAY SWIVEL SYMMETRIC TORQUE	SYMMETRIC TORQUE TO MOVE ARM ASSEMBLY	COLOR
AV-D32-23A141-50	7.9 (70)	1.13 (10)	4.29 N*m (38 lbf*in) NOMINAL / 2.17 N*m (24 lbf*in) MINIMUM	9.8 N*m (87 lbf*in) NOMINAL / 5.08 N*m (45 lbf*in) MINIMUM	BLACK
AV-D32-23A141-76	7.9 (70)	1.13 (10)			OFFICE WHITE
AV-D32-23A142-50	15.4 (136)	2.26 (20)	4.29 N*m (38 lbf*in) NOMINAL / 2.17 N*m (24 lbf*in) MINIMUM	9.8 N*m (87 lbf*in) NOMINAL / 5.08 N*m (45 lbf*in) MINIMUM	BLACK
AV-D32-23A142-76	15.4 (136)	2.26 (20)			OFFICE WHITE
AV-D32-23A143-50	8.6 (76)	6.0 (53)	4.29 N*m (38 lbf*in) NOMINAL / 2.17 N*m (24 lbf*in) MINIMUM	9.8 N*m (87 lbf*in) NOMINAL / 5.08 N*m (45 lbf*in) MINIMUM	BLACK
AV-D32-23A143-76	8.6 (76)	6.0 (53)			OFFICE WHITE

THIRD ANGLE PROJECTION		southco CONNECT · CREATE · INNOVATE
MILLIMETERS [IN]		
TOLERANCES UNLESS OTHERWISE NOTED		DESCRIPTION TILT & SWIVEL DISPLAY MOUNT SINGLE ARM, FRONT WALL MOUNT
SURFACE AREA	VOLUME	SIZE SYSTEM A2 NX
ALL DIMENSIONS WITHOUT TOLERANCES ARE FOR REFERENCE ONLY.		DWG NO. J-AV-D32-23A141
PROPRIETARY ITEM EXCEPT FOR USES EXPRESSLY GRANTED IN WRITING. INFORMATION DISCLOSED HEREON IS CONFIDENTIAL AND ALL RIGHTS, PATENT AND OTHERWISE, ARE RESERVED BY SOUTHCO, INC.		DATE 26MAR2018
PER ASME Y14.5M-1994	DRAWN BY GEA	SCALE 1:1
		SHEET 1 OF 3

8

7

6

5

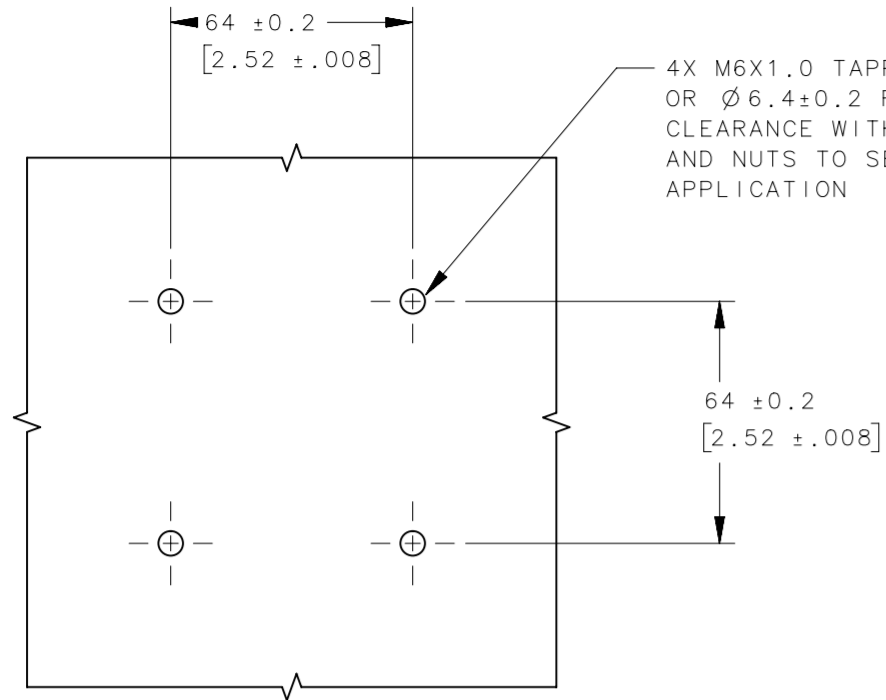
4

3

2

1

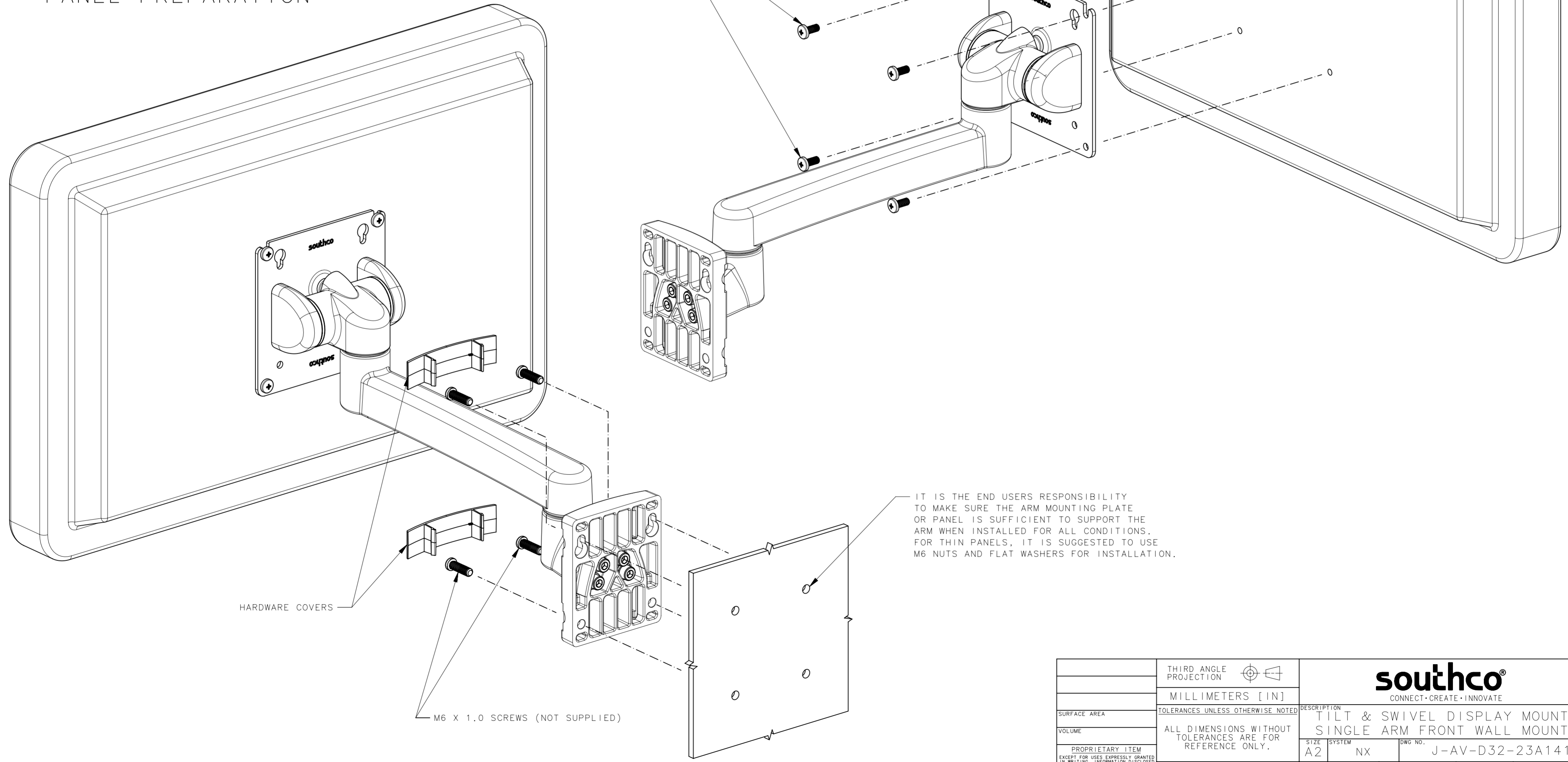
REVISION HISTORY			
REV	DATE	BY	DESCRIPTION
B	26MAY2020	GEA/DMS	PRN: P2020-0959



PANEL PREPARATION

DISPLAY MOUNTING SCREWS
(NOT SUPPLIED)

SIMULATED DISPLAY
(NOT SUPPLIED)



	THIRD ANGLE PROJECTION	southco CONNECT · CREATE · INNOVATE	
	MILLIMETERS [IN]	DESCRIPTION	
SURFACE AREA	TOLERANCES UNLESS OTHERWISE NOTED	TILT & SWIVEL DISPLAY MOUNT SINGLE ARM FRONT WALL MOUNT	
VOLUME	ALL DIMENSIONS WITHOUT TOLERANCES ARE FOR REFERENCE ONLY.	SIZE SYSTEM A2 NX	DWG NO. J-AV-D32-23A141
PROPRIETARY ITEM EXCEPT FOR USES EXPRESSLY GRANTED IN WRITING, INFORMATION DISCLOSED HEREON IS CONFIDENTIAL AND ALL RIGHTS, PATENT AND OTHERWISE, ARE RESERVED BY SOUTHCO, INC.	PER ASME Y14.5M-1994	DRAWN BY GEA	DATE 26MAR2018
		SCALE 1:1	SHEET 2 OF 3

8

7

6

5

4

3

2

1

8

7

6

5

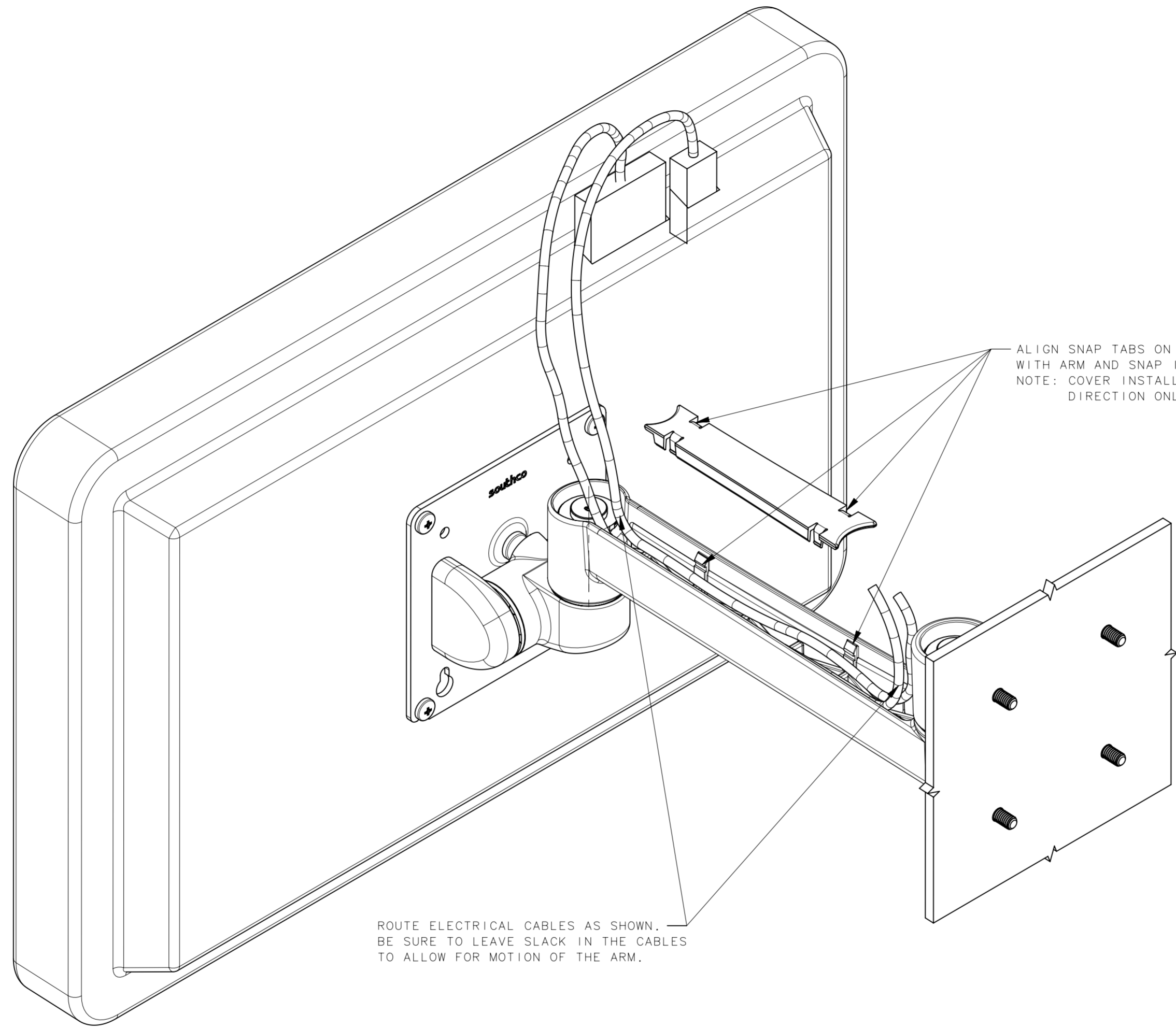
4

3

2

1

REVISION HISTORY			
REV	DATE	BY	DESCRIPTION
B	26MAY2020	GEA/DMS	PRN: P2020-0959



ALIGN SNAP TABS ON WIRE COVER WITH ARM AND SNAP INTO PLACE. NOTE: COVER INSTALLS IN ONE DIRECTION ONLY.

ROUTE ELECTRICAL CABLES AS SHOWN. BE SURE TO LEAVE SLACK IN THE CABLES TO ALLOW FOR MOTION OF THE ARM.

	THIRD ANGLE PROJECTION			southco CONNECT · CREATE · INNOVATE	
	MILLIMETERS [IN]				
SURFACE AREA	TOLERANCES UNLESS OTHERWISE NOTED		DESCRIPTION		
VOLUME	ALL DIMENSIONS WITHOUT TOLERANCES ARE FOR REFERENCE ONLY.		TILT & SWIVEL DISPLAY MOUNT SINGLE ARM FRONT WALL MOUNT		
PROPRIETARY ITEM	EXCEPT FOR USES EXPRESSLY GRANTED IN WRITING, INFORMATION DISCLOSED HEREON IS CONFIDENTIAL AND ALL RIGHTS, PATENT AND OTHERWISE, ARE RESERVED BY SOUTHCO, INC.		SIZE	SYSTEM	DWG NO.
	PER ASME Y14.5M-1994		A2	NX	J-AV-D32-23A141
			DRAWN BY	DATE	SCALE
			GEA	22AUG2014	1:1
					SHEET 3 OF 3

8

7

6

5

4

3

2

1