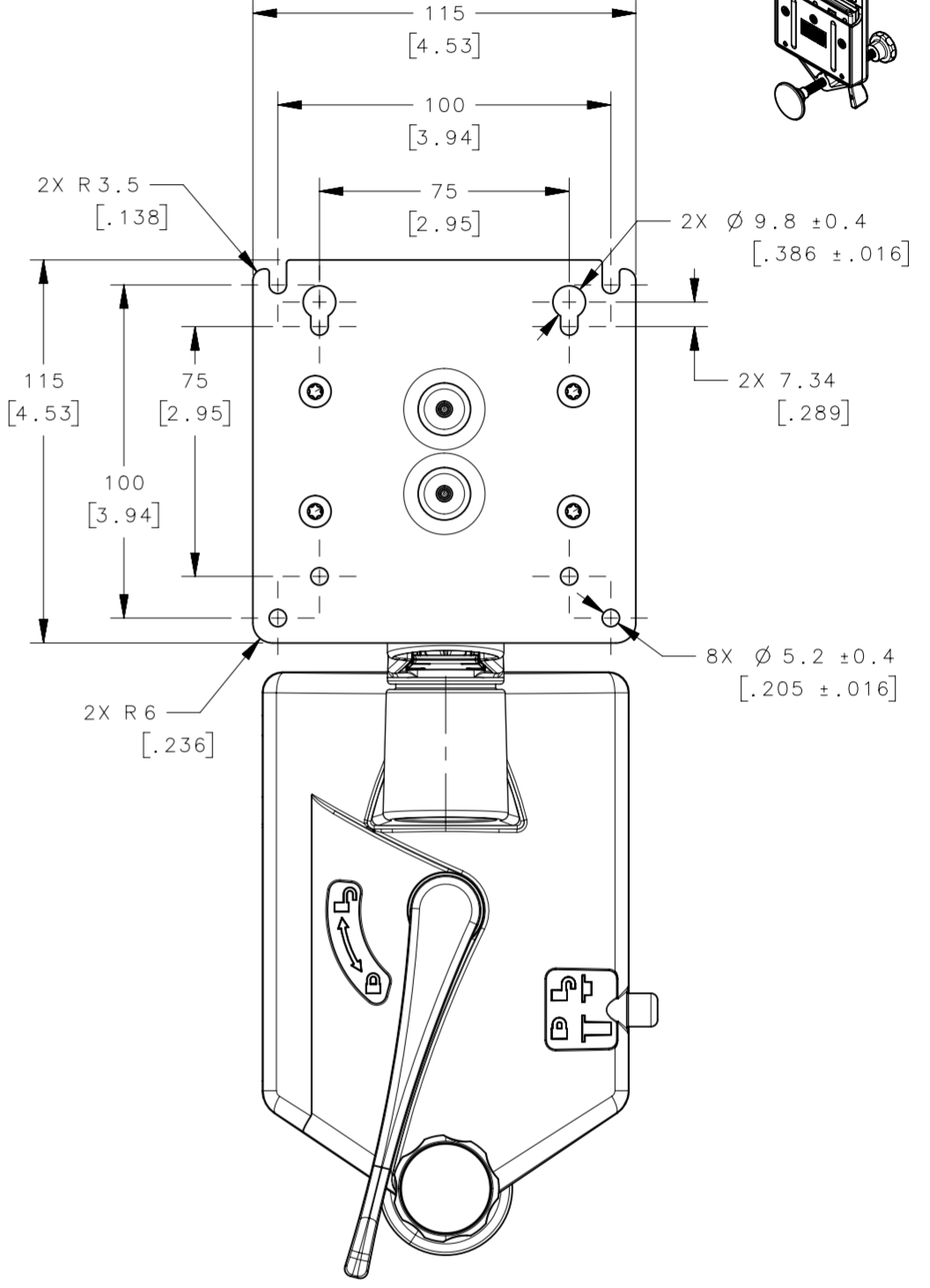
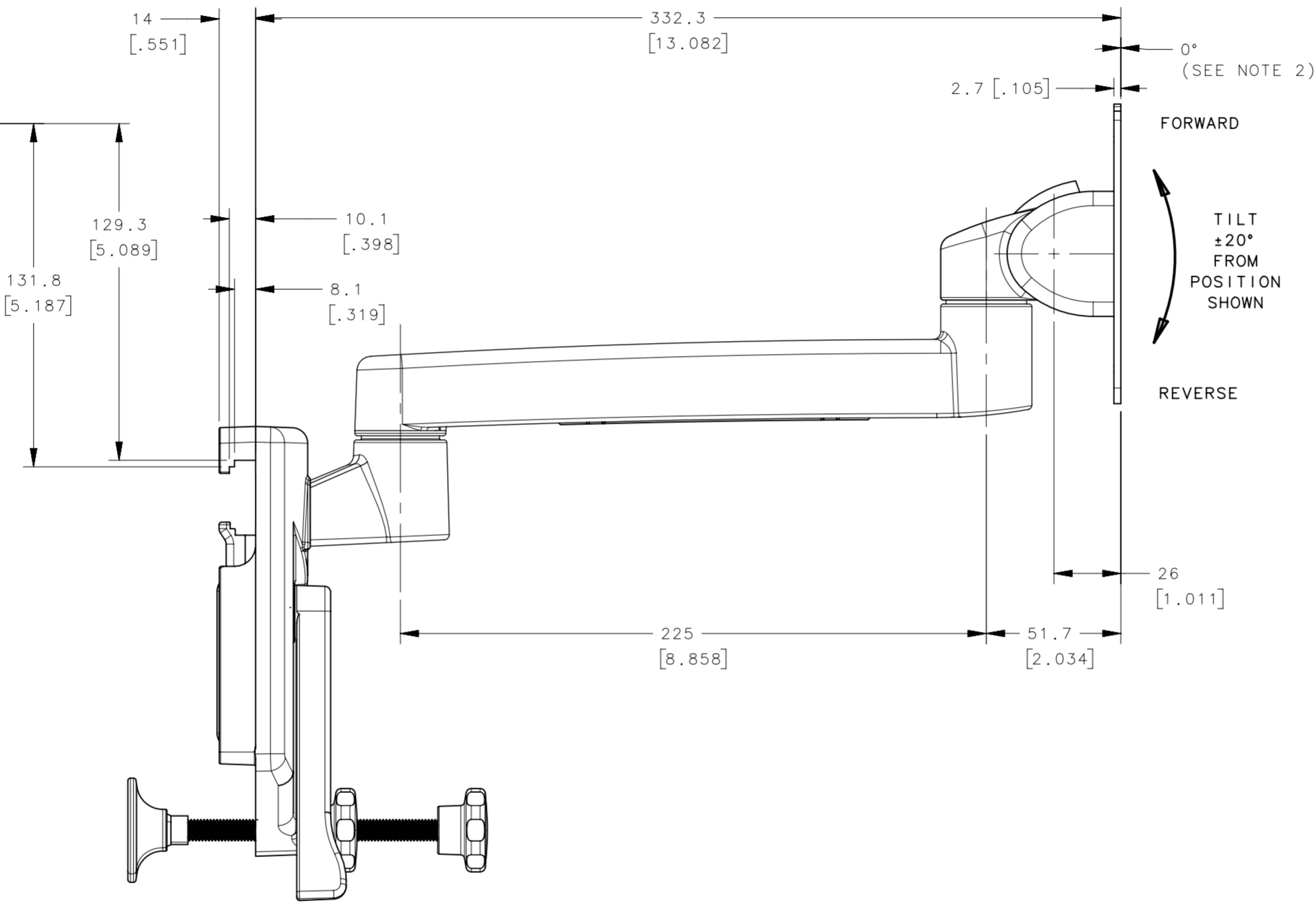
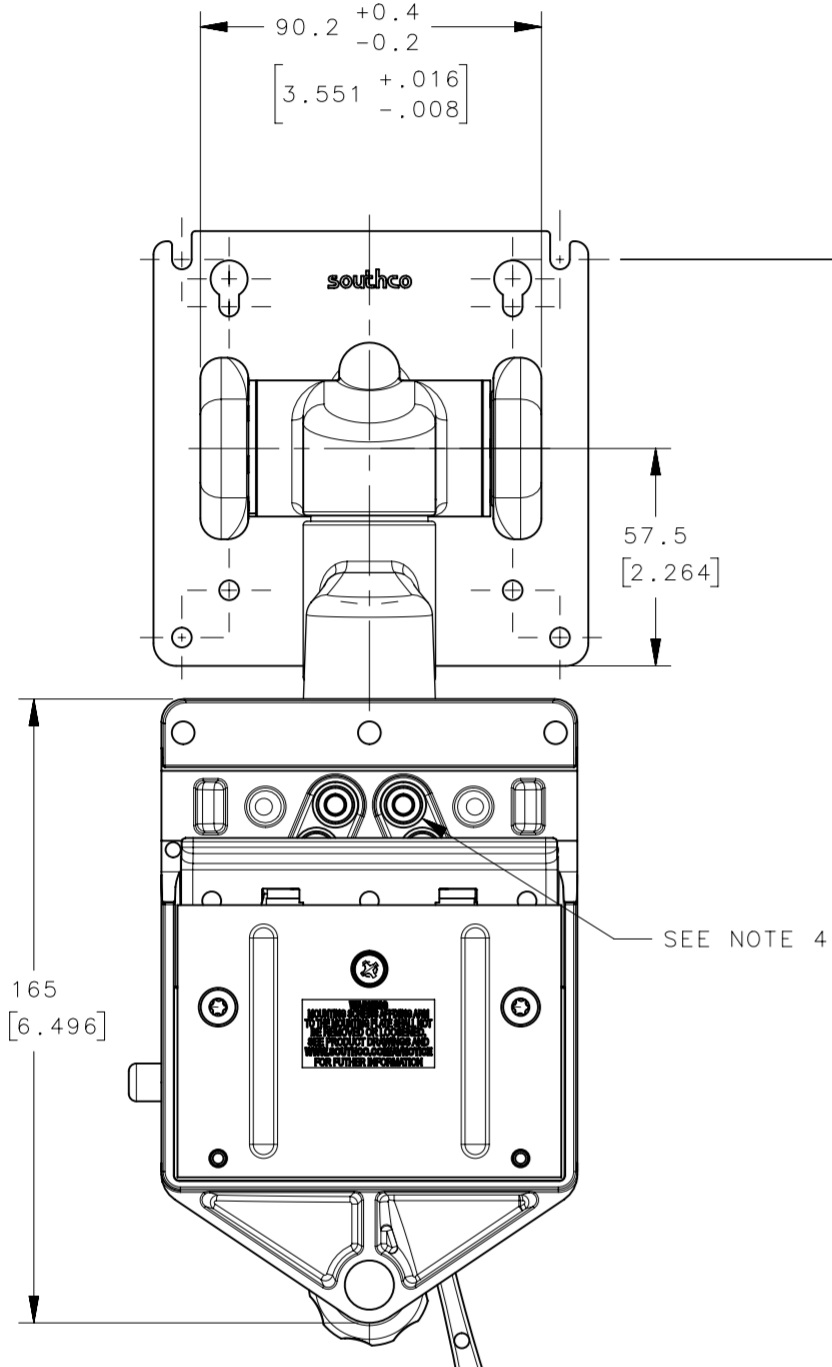
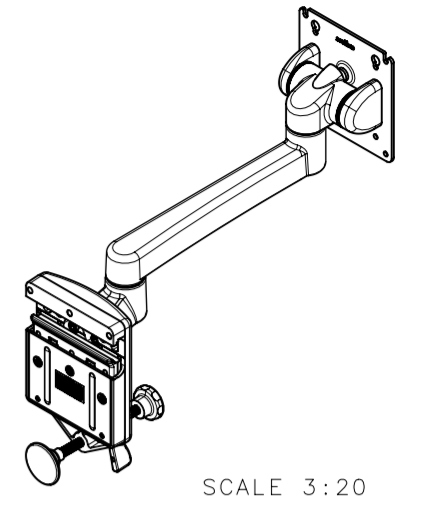
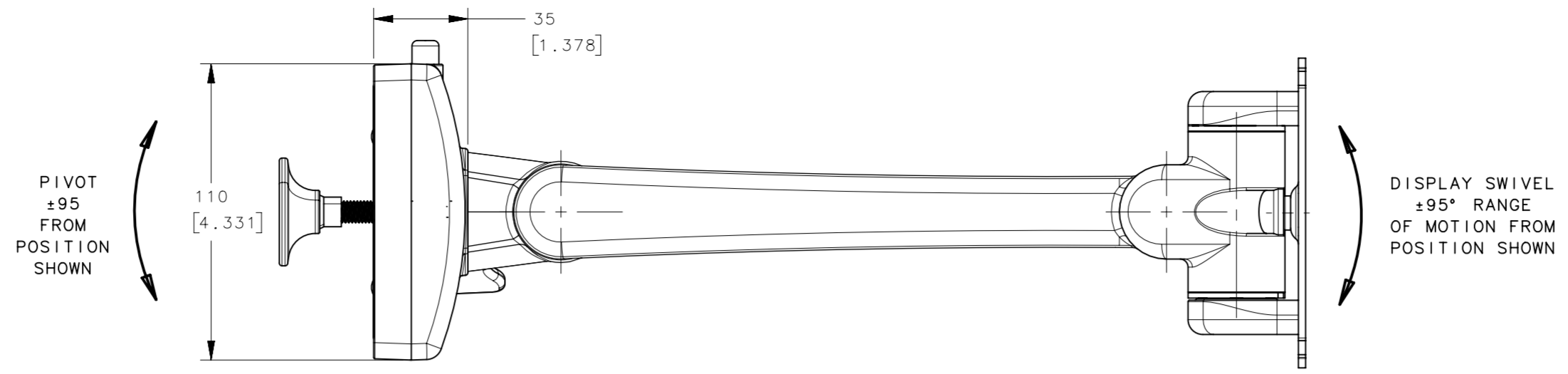


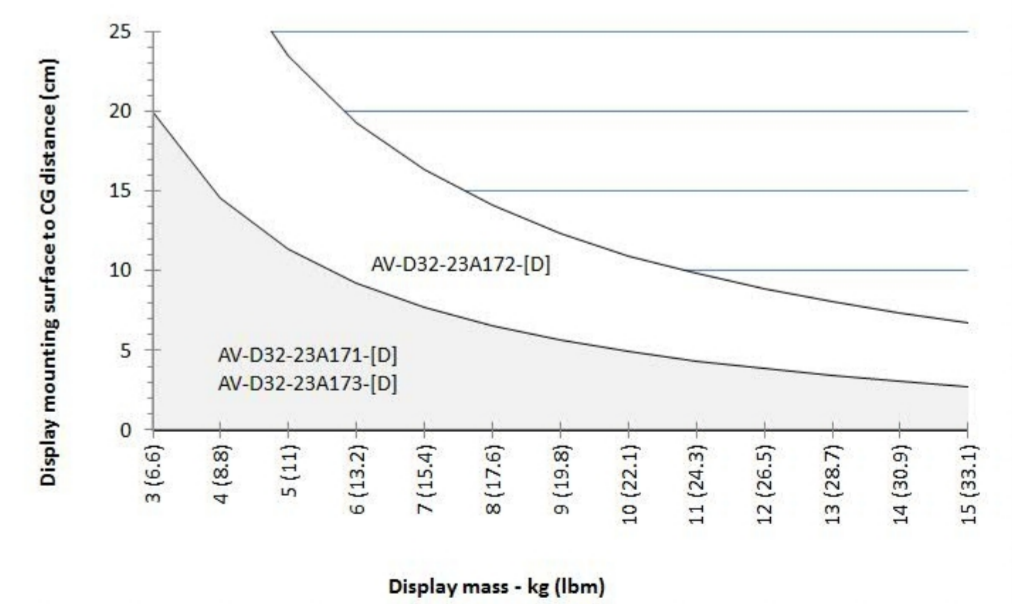
REVISION HISTORY			
REV	DATE	BY	DESCRIPTION
B	28MAY2020	GEA/DMS	PRN: P2020-0959



ADJUSTMENT KNOB
HIDDEN FOR CLARITY

- NOTES:
- FINISH PER SOUTHCO COSMETIC SPECIFICATION S-121 CLASS C EXTERIOR POWDER COATED SURFACES.
 - TILT TORQUE MEASURED WITH VESA DISPLAY PLATE IN THE VERTICAL ($0^\circ \pm 5^\circ$) POSITION WHEN TILTING IN THE REVERSE DIRECTION. THE TILT TORQUE VARIES WITH THE COUNTERBALANCE (WHEN EQUIPPED) IN THE FORWARD AND REVERSE DIRECTIONS.
 - DISPLAY MOUNTING PLATE TO HOUSING ANGULAR FREE PLAY TO BE 1.5° MAXIMUM.
 - SCREWS AFFIXING HOUSING MOUNT TO MOUNTING PLATE ARE NOT TO BE REMOVED. IF REMOVED OR LOOSENED, REPLACE USING NEW M6-1.0x0.25, CLASS 12.9, HIGH TENSILE CAP HEAD SCREWS AND PLAIN WASHERS AND TIGHTEN TO 14-16 Nm.
 - MATERIALS AND FINISHES:
 - ADAPTERS: DIE CAST ALUMINUM, ANODIZED AND POWDER COATED
 - ARM, TILT HOUSING, SWIVEL HOUSING AND ARM MOUNT PLATE: DIE CAST ALUMINUM, POWDER COATED
 - TILT SLEEVE AND THRUST WASHER: ACETAL, BLACK
 - COILED PIN: STEEL, PHOSPHATE COATED
 - TILT SHAFT, TORQUE ELEMENTS AND STOP WASHER: STEEL, NATURAL FINISH
 - TORSION SPRING: CARBON STEEL, NICKEL PLATED
 - DISPLAY SCREWS: STEEL, BLACK OXIDE
 - DISPLAY STOPS: POLYETHYLENE, WHITE
 - SWIVEL SHAFT: STAINLESS STEEL AND NYLON
 - WIRE COVER: PC/ABS, BLACK
 - M6 SCREWS: ALLOY STEEL, BLACK OXIDE
 - M6 FLAT WASHERS: STEEL, ZINC PLATED
 - LABEL: VINYL WITH POLYESTER ADHESIVE
 - LUBRICANT: HYDROCARBON BASE
 - DIN RAIL: DIE CAST ALUMINUM ANODIZED AND POWDER COATED.

AV-D32 23A-Series Model Selection Guide



PART NUMBER	REVERSE TILT TORQUE N*m (lbf*in)	FORWARD TILT TORQUE N*m (lbf*in)	DISPLAY SWIVEL SYMMETRIC TORQUE	SYMMETRIC TORQUE TO MOVE ARM ASSEMBLY	COLOR
AV-D32-23A171-50	7.9 (70)	1.13 (10)	4.29 N*m (38 lbf*in)	9.8 N*m (87 lbf*in)	BLACK
AV-D32-23A171-76			NOMINAL / 2.17 N*m (24 lbf*in)	NOMINAL / 5.08 N*m (45 lbf*in)	OFFICE WHITE
AV-D32-23A172-50	15.4 (136)	2.26 (20)			BLACK
AV-D32-23A172-76					OFFICE WHITE
AV-D32-23A173-50	8.6 (76)	6.0 (53)			BLACK
AV-D32-23A173-76					OFFICE WHITE

THIRD ANGLE PROJECTION	<p>CONNECT · CREATE · INNOVATE</p>
MILLIMETERS [IN]	
SURFACE AREA	TOLERANCES UNLESS OTHERWISE NOTED
VOLUME	ALL DIMENSIONS WITHOUT TOLERANCES ARE FOR REFERENCE ONLY.
PROPRIETARY ITEM	DESCRIPTION: TILT & SWIVEL DISPLAY MOUNT SINGLE ARM DIN RAIL MOUNT
EXCEPT FOR USES EXPRESSLY GRANTED IN WRITING, INFORMATION DISCLOSED HEREON IS CONFIDENTIAL AND ALL RIGHTS, PATENT AND OTHERWISE, ARE RESERVED BY SOUTHCO, INC.	SIZE SYSTEM: A2 NX DWG NO.: J-AV-D32-23A171
PER ASME Y14.5M-1994	DRAWN BY: CBI/DMS DATE: 26APR2018 SCALE: 1:2 SHEET: 1 OF 3

8

7

6

5

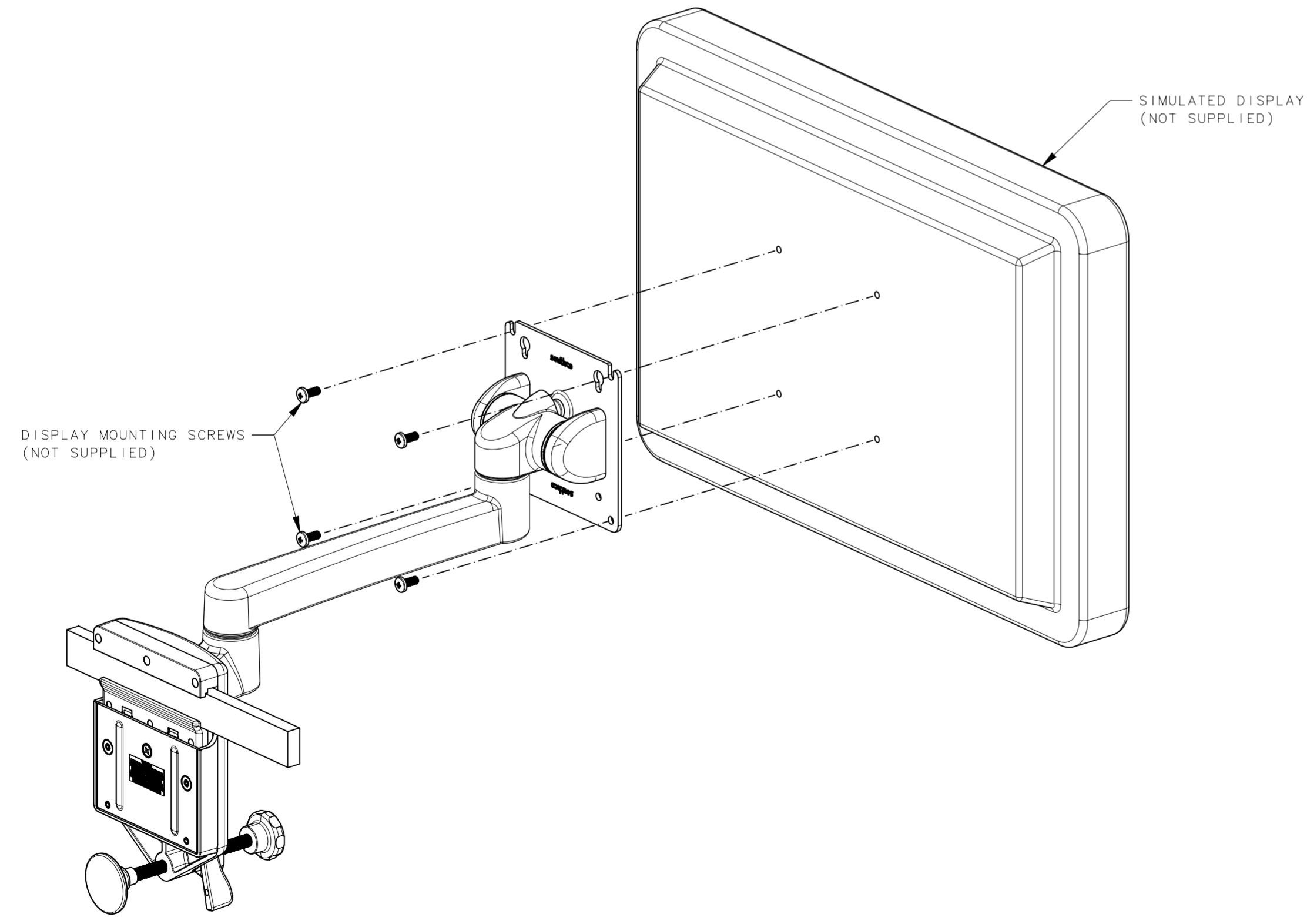
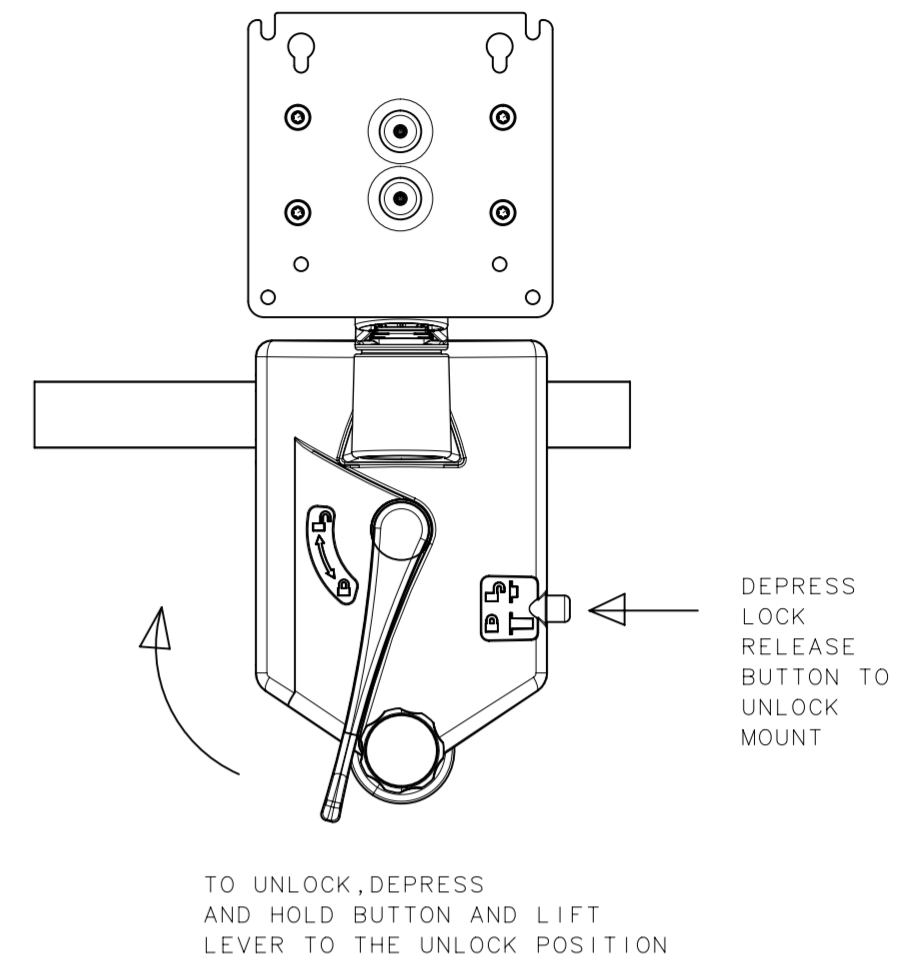
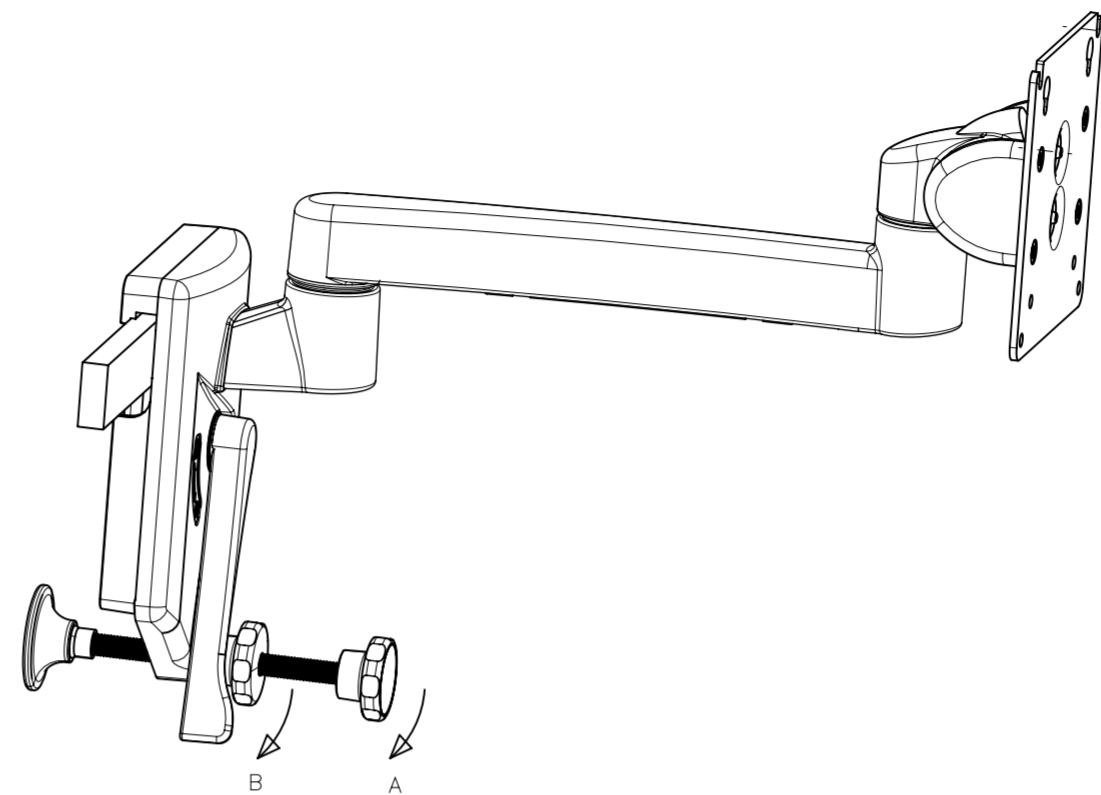
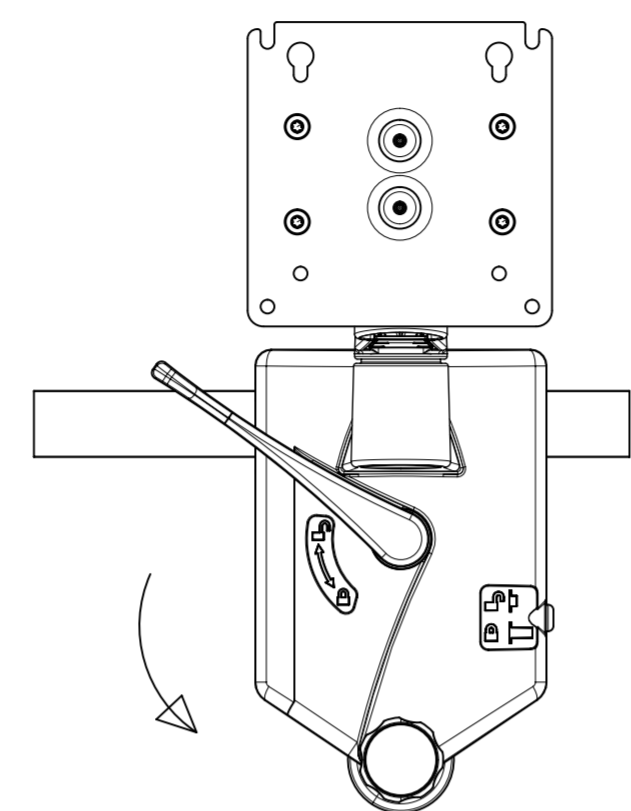
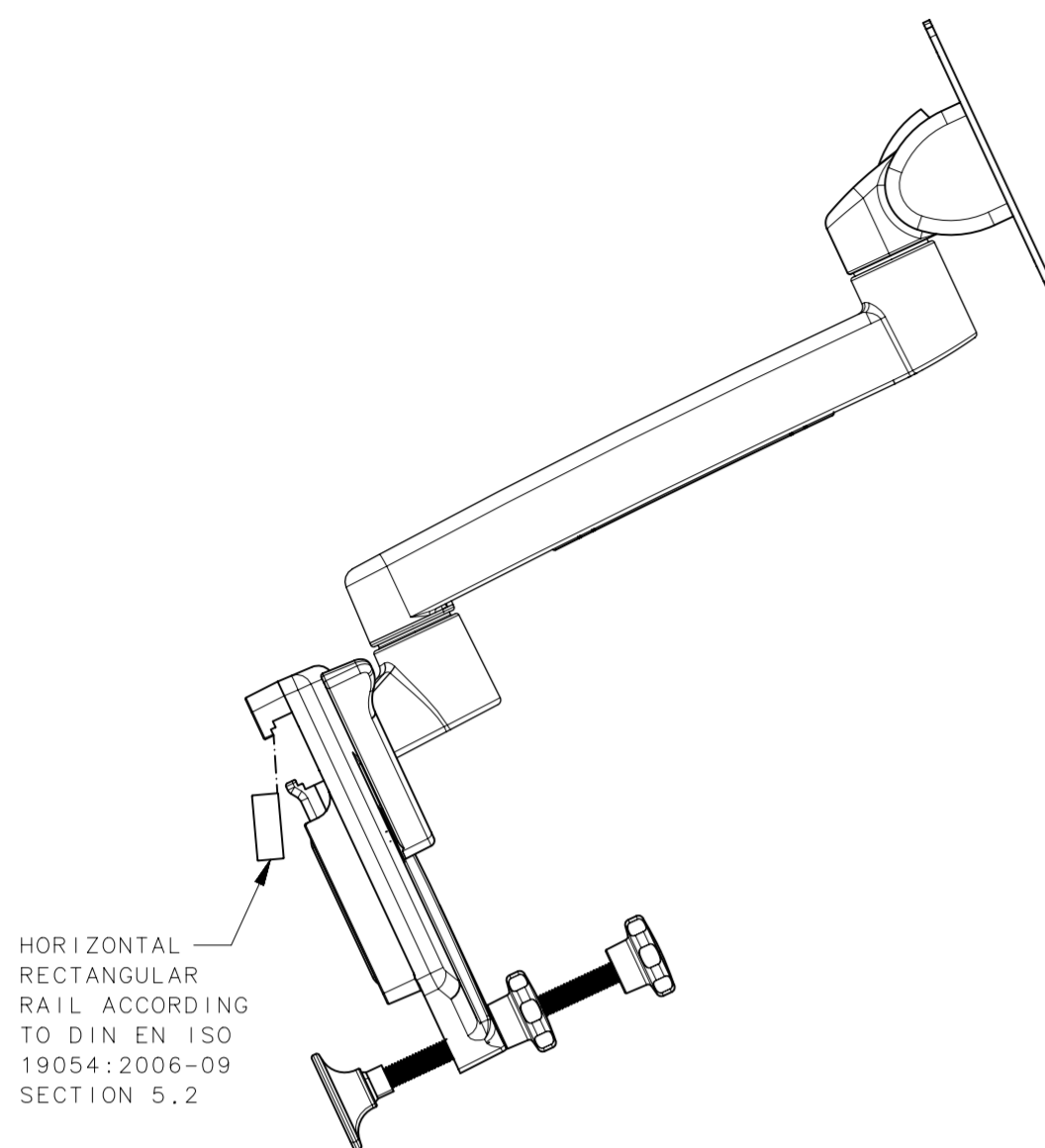
4

3

2

1

REVISION HISTORY			
REV	DATE	BY	DESCRIPTION
B	28MAY2020	GEA/DMS	PRN: P2020-0959



INSTALLATION INSTRUCTIONS:
 INSERT TOP OF DIN RAIL MOUNT CLAMP INTO DIN RAIL AT AN ANGLE AND LOWER THE CLAMP AROUND THE BOTTOM OF THE RAIL. ONCE MOUNT IS IN PLACE, TURN LOCKING LEVER DOWN TO LOCK POSITION. WHILE STILL SUPPORTING THE ARM AT A LEVEL HEIGHT, TURN ADJUSTMENT SCREW 'A' IN DIRECTION SHOWN UNTIL CONTACT WITH WALL IS OBTAINED AND ARM ASSEMBLY IS LEVEL. DO NOT OVERTIGHTEN. TIGHTEN LOCKNUT 'B' TO SECURE. TO UNLOCK AND DISMOUNT FROM DIN RAIL, PRESS AND HOLD BUTTON IN. TURN LEVER BACK TO UNLOCK POSITION.

NOTES:
 DIN RAIL DIMENSION TO BE 8±0.1 X 30±0.2 OR 10±0.1 X 25±0.2. MADE TO SPECIFICATION DIN EN ISO 19054:2006-09 SECTION 5.2

CAUTION:
 BECAUSE OF THE WIDE VARIETY OF AVAILABLE WALL MATERIALS AND MOUNTING HARDWARE, IT IS THE INSTALLER'S RESPONSIBILITY TO ENSURE THAT THE MATERIALS AND STRUCTURE TO WHICH THE ARM IS MOUNTED, AND THE MOUNTING HARDWARE SELECTED WILL PROVIDE ADEQUATE SUPPORT FOR PROPER FUNCTIONING AND WEIGHT BEARING LOAD. SOUTHCO ASSUMES NO LIABILITY FOR THE SELECTION OF WALL MATERIALS, STRUCTURE OR MOUNTING HARDWARE.

	THIRD ANGLE PROJECTION		
	MILLIMETERS [IN]		
SURFACE AREA	TOLERANCES UNLESS OTHERWISE NOTED	DESCRIPTION	
VOLUME	ALL DIMENSIONS WITHOUT TOLERANCES ARE FOR REFERENCE ONLY.	TILT & SWIVEL DISPLAY MOUNT SINGLE ARM DIN RAIL MOUNT	
PROPRIETARY ITEM	EXCEPT FOR USES EXPRESSLY GRANTED IN WRITING, INFORMATION DISCLOSED HEREON IS CONFIDENTIAL AND ALL RIGHTS, PATENT AND OTHERWISE, ARE RESERVED BY SOUTHCO, INC.	SIZE SYSTEM	DWG NO.
	PER ASME Y14.5M-1994	A2 NX	J-AV-D32-23A171
		DRAWN BY	DATE
		CBI/DMS	26APR2018
		SCALE	SHEET
		0.35:1	2 OF 3

8

7

6

5

4

3

2

1

8

7

6

5

4

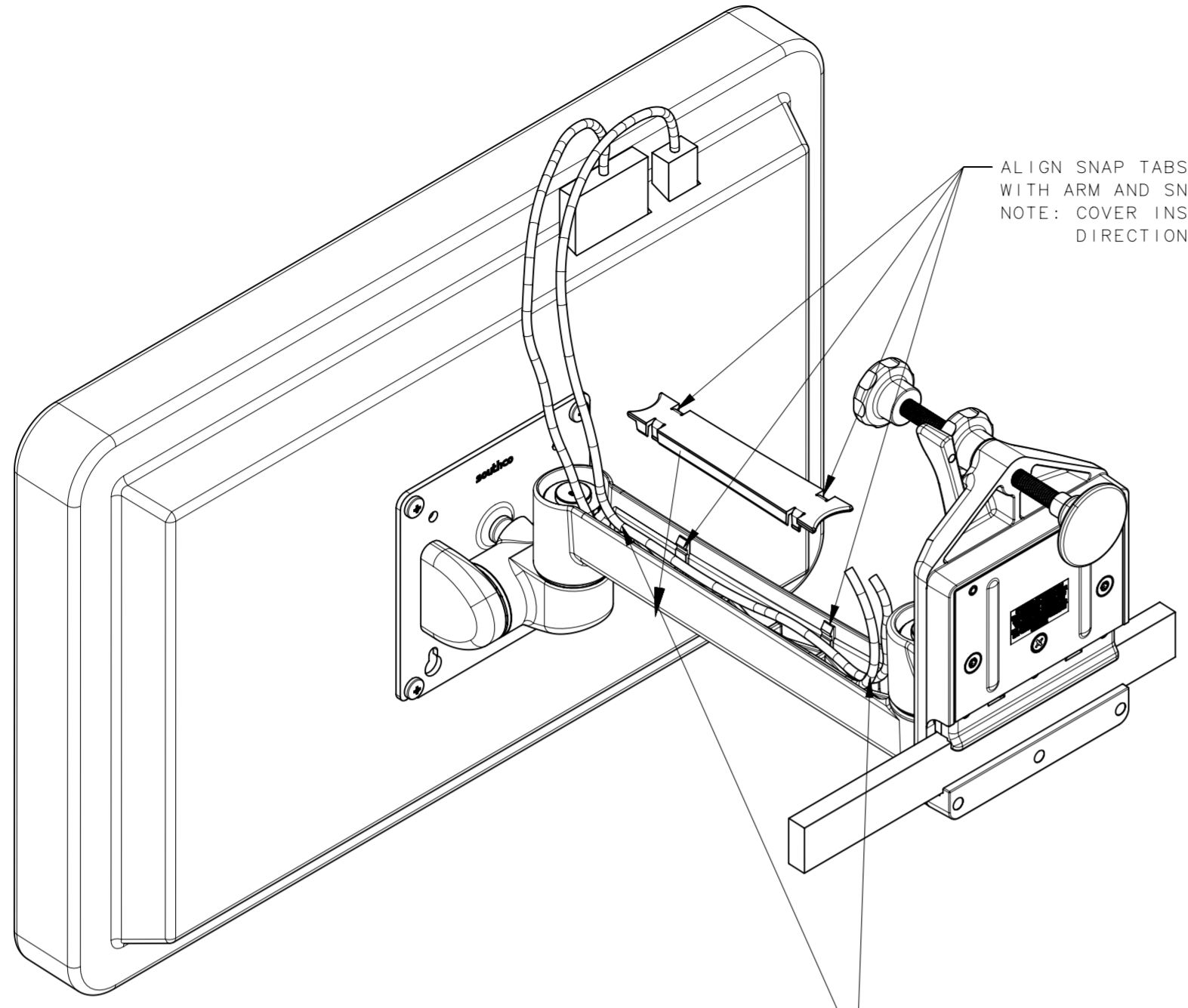
3

2

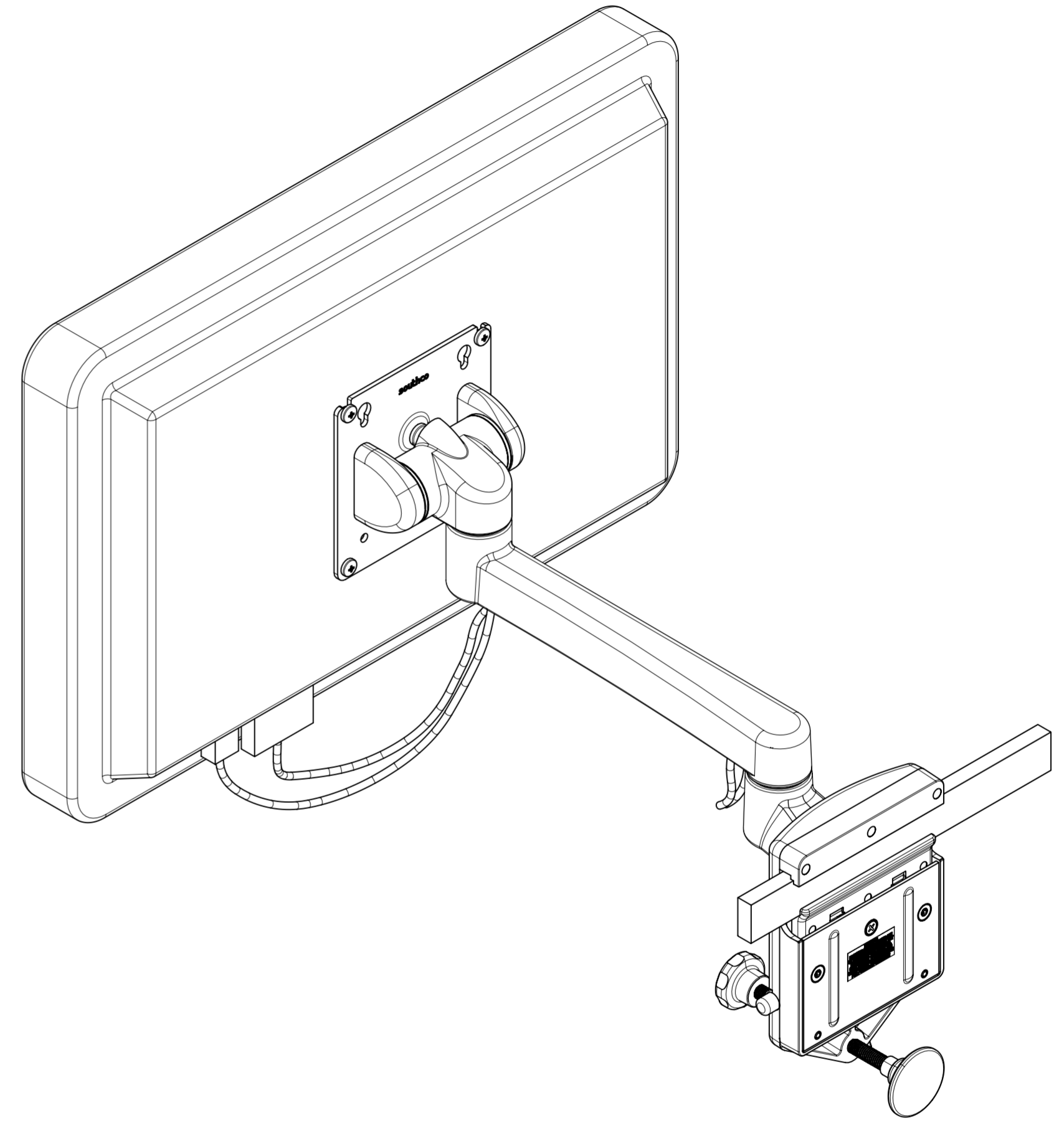
1

REVISION HISTORY

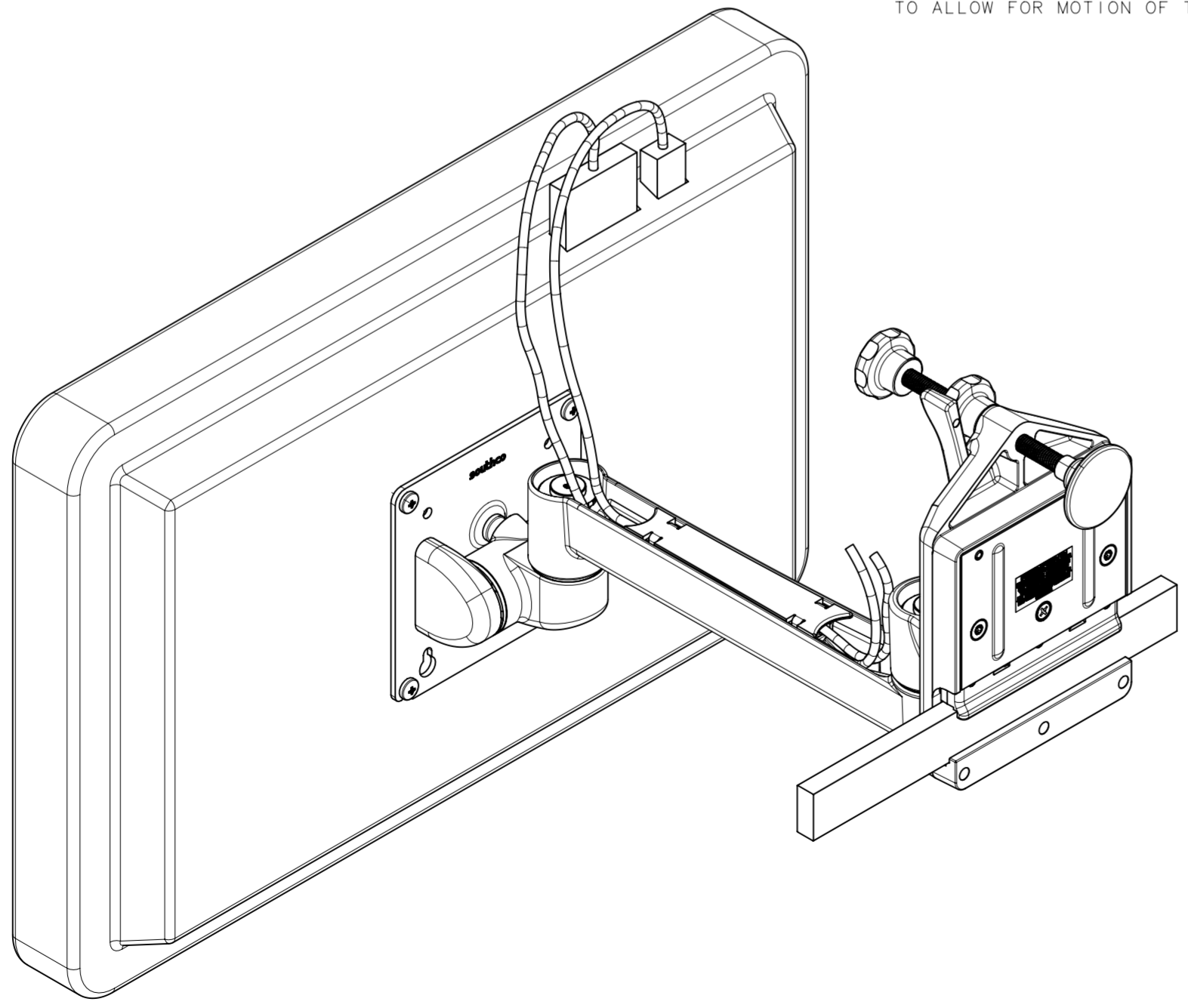
REV	DATE	BY	DESCRIPTION
B	28MAY2020	GEA/DMS	PRN: P2020-0959



ALIGN SNAP TABS ON WIRE COVER WITH ARM AND SNAP INTO PLACE.
NOTE: COVER INSTALLS IN ONE DIRECTION ONLY.



ROUTE ELECTRICAL CABLES AS SHOWN.
BE SURE TO LEAVE SLACK IN THE CABLES TO ALLOW FOR MOTION OF THE ARM



	THIRD ANGLE PROJECTION	southco CONNECT · CREATE · INNOVATE
	MILLIMETERS [IN]	
SURFACE AREA	TOLERANCES UNLESS OTHERWISE NOTED	DESCRIPTION TILT & SWIVEL DISPLAY MOUNT SINGLE DIN RAIL MOUNT
VOLUME	ALL DIMENSIONS WITHOUT TOLERANCES ARE FOR REFERENCE ONLY.	SIZE SYSTEM A2 NX
PROPRIETARY ITEM EXCEPT FOR USES EXPRESSLY GRANTED IN WRITING, INFORMATION DISCLOSED HEREON IS CONFIDENTIAL AND ALL RIGHTS, PATENT AND OTHERWISE, ARE RESERVED BY SOUTHCO, INC.	PER ASME Y14.5M-1994	DWG NO. J-AV-D32-23A171
		DRAWN BY CBI/DMS
		DATE 26APR2018
		SCALE 0.4:1
		SHEET 3 OF 3

8

7

6

5

4

3

2

1