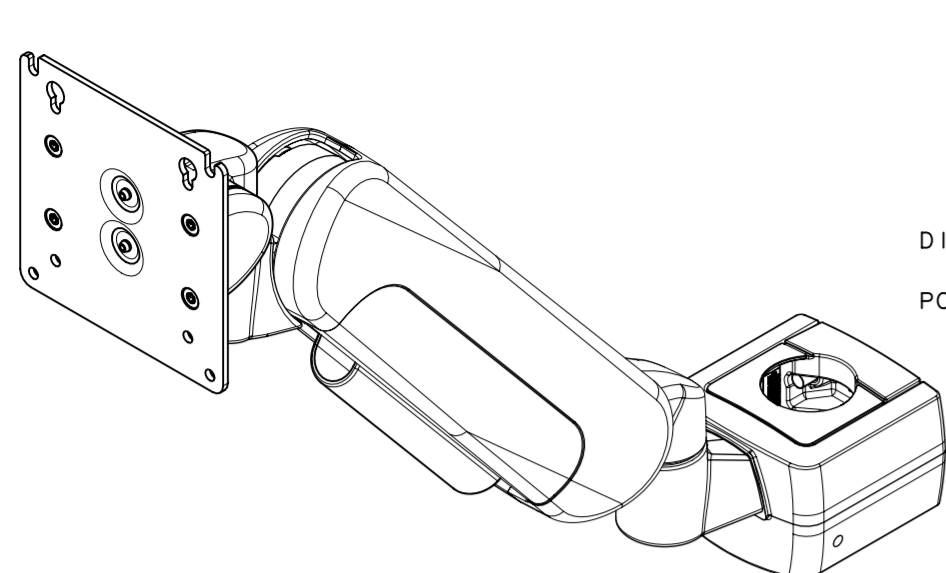
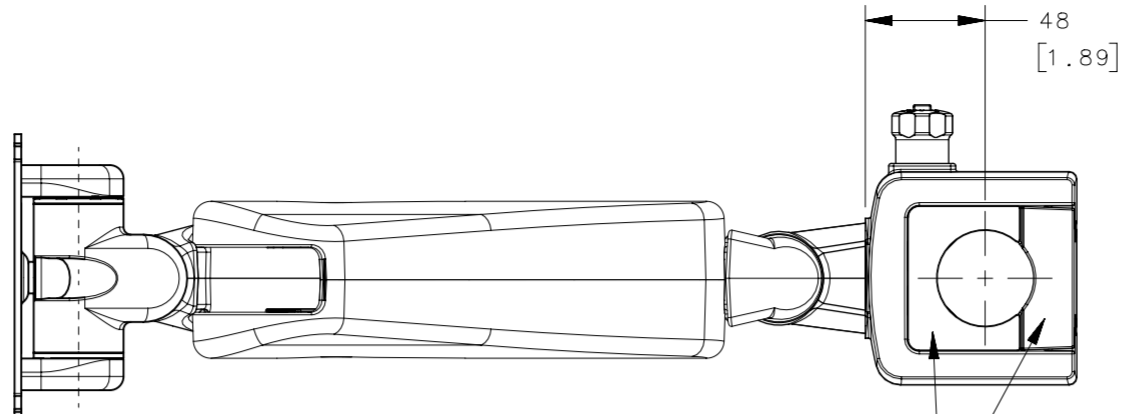


REVISION HISTORY			
REV	DATE	BY	DESCRIPTION
C	04MAY2020	GEA/DMS	PRN: P2019-3080

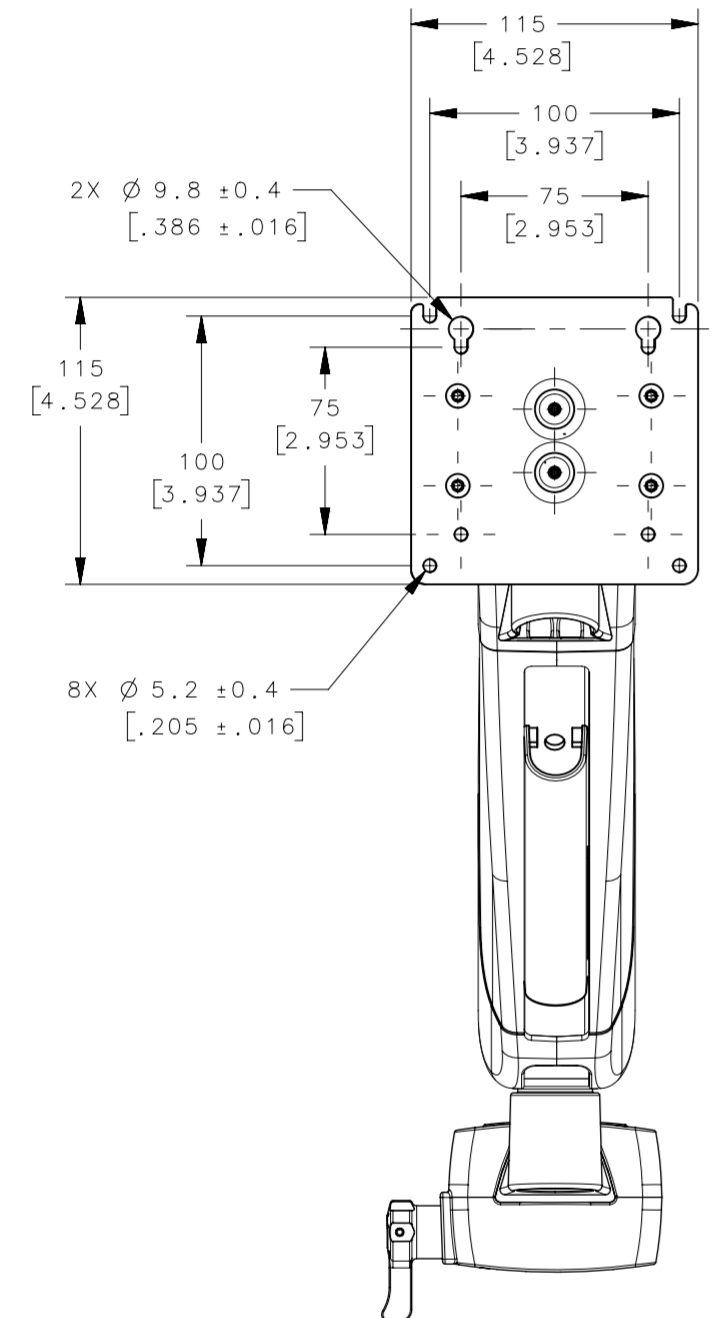
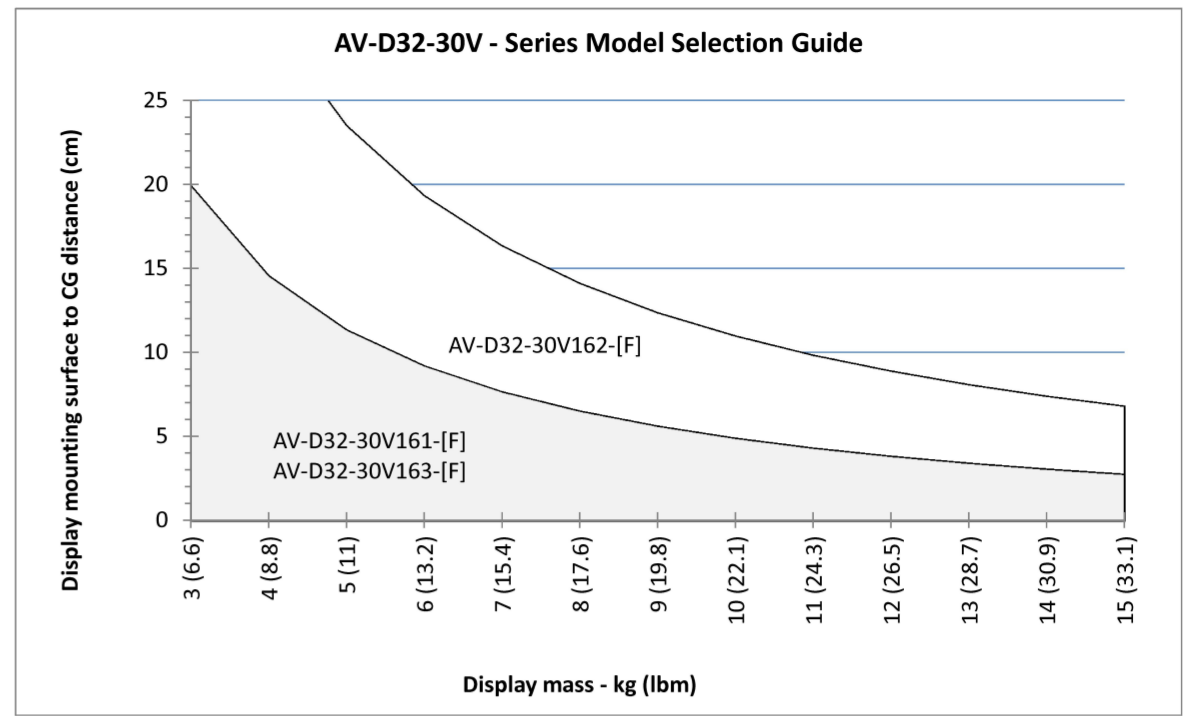


DISPLAY SWIVEL
±90° FROM
POSITION SHOWN



ARM PIVOT
±90° FROM
POSITION SHOWN

ARM SHOWN WITH POLE MOUNT
COVER AND INSERT INSTALLED
(THESE PARTS SHIP UNINSTALLED)

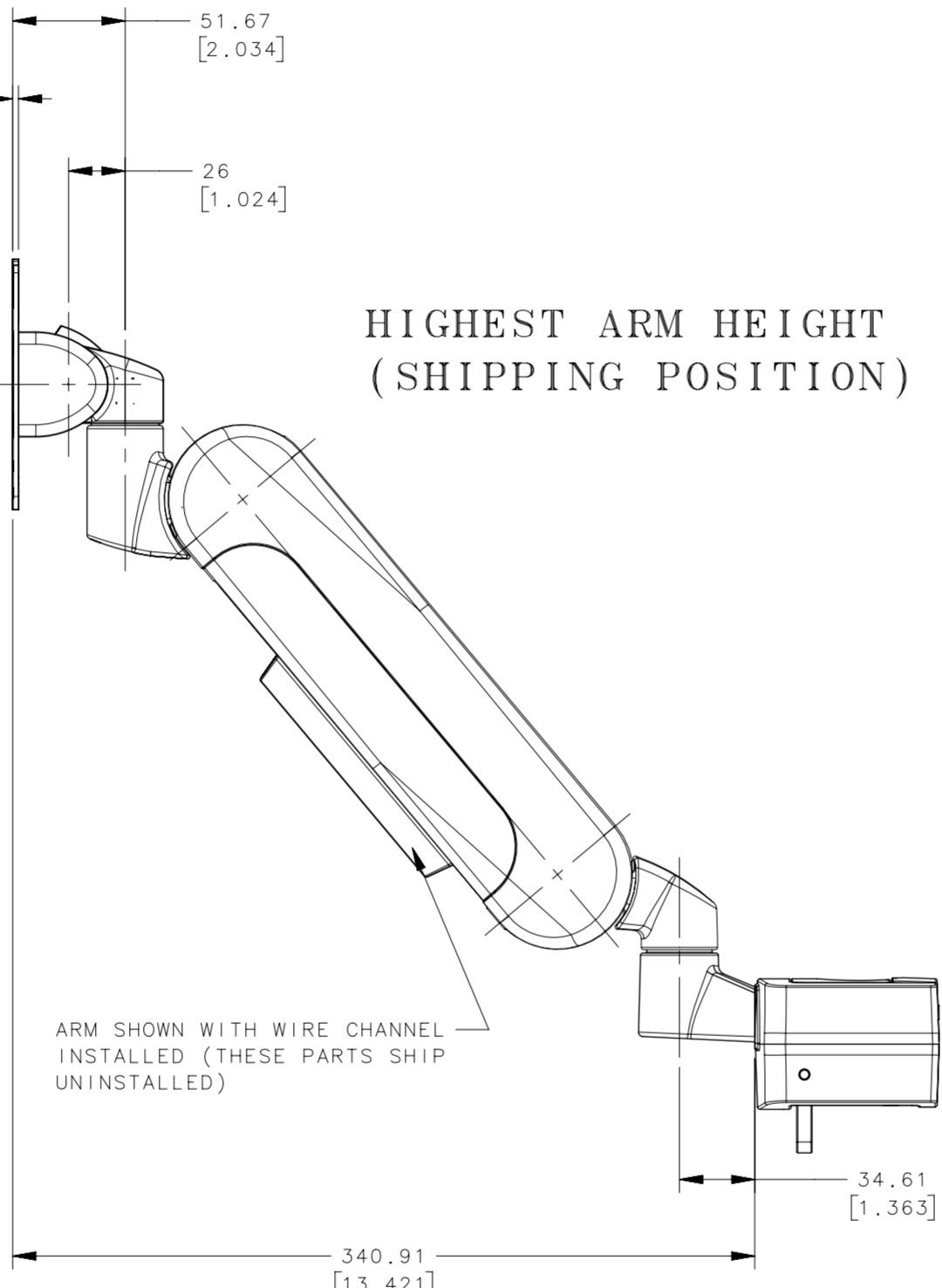


2.67 [.105]
3.0 [0.118] MAXIMUM
WHEN POWDER COATED

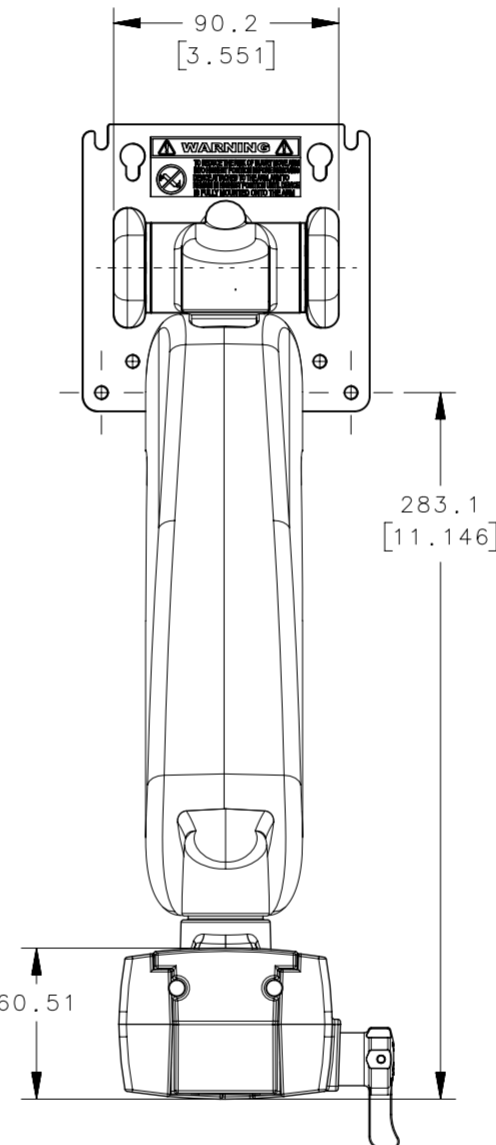
DISPLAY TILT
+35° FORWARD
-20° REVERSE
FROM POSITION
SHOWN



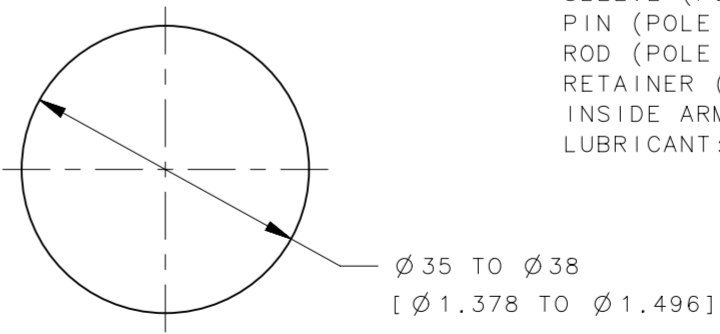
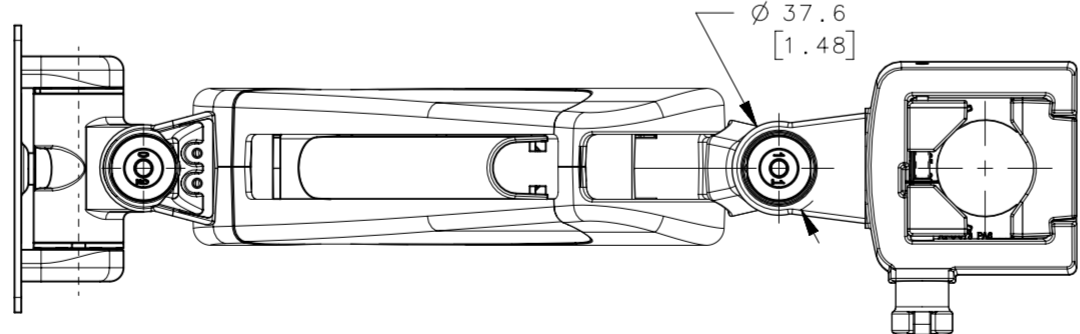
HIGHEST ARM HEIGHT
(SHIPPING POSITION)



ARM SHOWN WITH WIRE CHANNEL
INSTALLED (THESE PARTS SHIP
UNINSTALLED)



60.51



POLE SIZE FOR
ARM MOUNT

- NOTES:
- FINISH PER SOUTHCO COSMETIC SPECIFICATION S-121. ALL POWDER COATED EXTERIOR VISIBLE SURFACES CLASS C AND PLASTIC COVERS CLASS B.
 - TILT TORQUE MEASURED WITH DISPLAY MOUNTING PLATE IN THE VERTICAL 0° ± 5° POSITION WHEN TILTING IN THE REVERSE DIRECTION. THE TILT TORQUE VARIES WITH THE COUNTERBALANCE (WHEN EQUIPPED) IN THE FORWARD AND REVERSE DIRECTIONS.
 - THE DISPLAY MOUNTING PLATE TO TILT HOUSING ANGULAR FREE PLAY TO BE 1.5° MAXIMUM.
 - THE ARM IS ADJUSTABLE TO SUPPORT DISPLAYS OF WEIGHT WITHIN RANGE SPECIFIED IN THE TABLE BELOW. THE DISPLAY IS ADJUSTED BY USING A 5 mm HEX KEY IN THE TOP OF THE LOWER HOUSING. THIS IS ACCESSED BY LOWERING THE ARM POSITION WITH THE DISPLAY ATTACHED TO JUST BELOW THE HORIZONTAL POSITION. THE ADJUSTMENT SCREW IS TURNED CLOCKWISE FOR A LIGHTER DISPLAY AND COUNTERCLOCKWISE FOR HEAVIER DISPLAYS. THE ARM SHIPS WITH THE ADJUSTMENT FOR THE HEAVIEST DISPLAY. (SEE SHEET 2 OF 4)
 - MATERIALS AND FINISHES:
 ADAPTERS: DIE CAST ALUMINUM, ANODIZED AND POWDER COATED
 ARM, TILT HOUSING, UPPER KNUCKLE AND LOWER KNUCKLE, ARM ADAPTER AND POLE MOUNT HOUSING, WEDGES AND INSERT: DIE CAST ALUMINUM, POWDER COATED
 TILT SLEEVE, THRUST WASHER AND SHELL: ACETAL, BLACK
 COILED PIN: STEEL, PHOSPHATE COATED
 TILT SHAFT, TORQUE ELEMENTS AND STOP WASHER: STEEL, NATURAL FINISH
 TORSION SPRING: CARBON STEEL, NICKEL PLATED (WHEN EQUIPPED)
 DISPLAY SCREWS, POLE MOUNT SCREWS AND RETAINERS: STEEL, BLACK OXIDE
 DISPLAY STOPS: POLYETHYLENE, WHITE
 LINK BUSHING AND STRUT ADJUST BUSHING: BRASS, NATURAL
 LINK FLANGED SLEEVE: STEEL, TEFLON COATED
 STRUT PIN: STAINLESS STEEL
 STRUT ADJUST ADAPTER: ZINC, NICKEL PLATED
 GAS SPRING: STEEL AND ZINC, PAINTED
 ARM LINKS, STRUT BALL MOUNT: STEEL, ZINC PLATED
 ARM PIVOT SHAFTS: STAINLESS STEEL AND NYLON
 LINK PINS: STEEL, NICKEL PLATED
 ARM COVERS, WALL MOUNT FRONT COVERS AND WIRE CHANNEL: PC/ABS
 WASHERS (POLE MOUNT): STEEL, ZINC PLATED
 POLE MOUNT SHAFT: STAINLESS STEEL, PASSIVATED
 KNOB (POLE MOUNT): ACETAL
 SPRING (POLE MOUNT): STEEL, ZINC PLATED
 SLEEVE (POLE MOUNT): BRASS
 SLEEVE (POLE MOUNT): NYLON
 PIN (POLE MOUNT): STEEL
 ROD (POLE MOUNT INSERT): SILICONE
 RETAINER (POLE MOUNT): STEEL, ZINC PLATED
 INSIDE ARM COVER: POLYAMIDE (NYLON)
 LUBRICANT: HYDROCARBON BASE

WARNING:
TO REDUCE THE RISK OF INJURY MOVE ARM INTO HIGHEST POSITION BEFORE REMOVING DEVICE ATTACHED TO ARM. ARM TO REMAIN IN HIGHEST POSITION UNTIL DEVICE IS FULLY MOUNTED INTO THE ARM.

PART NUMBER	REVERSE TILT TORQUE N*m (lbf*in)	FORWARD TILT TORQUE N*m (lbf*in)	DISPLAY SWIVEL SYMMETRIC TORQUE N*m (lbf*in)	SYMMETRIC TORQUE TO MOVE ARM ASSEMBLY N*m (lbf*in)	RECOMMENDED DISPLAY WEIGHT RANGE	COLOR
AV-D32-30V161-50	7.9 (70)	1.13 (10)	4.29 N*m (38 lbf*in) NOMINAL / 2.17 N*m (19.2 lbf*in) MINIMUM	6.0 N*m (53.1 lbf*in) NOMINAL / 4.2 N*m (37.1 lbf*in) MINIMUM	2 To 7 kg (4.4 TO 15.4 lbm)	BLACK
AV-D32-30V161-76					5 TO 10 Kg (11 TO 22 lbm)	OFFICE WHITE
AV-D32-30V162-50	15.4 (136)	2.26 (20)	4.29 N*m (38 lbf*in) NOMINAL / 2.17 N*m (19.2 lbf*in) MINIMUM	6.0 N*m (53.1 lbf*in) NOMINAL / 4.2 N*m (37.1 lbf*in) MINIMUM	2 To 7 kg (4.4 TO 15.4 lbm)	BLACK
AV-D32-30V162-76					5 TO 10 Kg (11 TO 22 lbm)	OFFICE WHITE
AV-D32-30V163-50	8.6 (76)	6.0 (53)	4.29 N*m (38 lbf*in) NOMINAL / 2.17 N*m (19.2 lbf*in) MINIMUM	6.0 N*m (53.1 lbf*in) NOMINAL / 4.2 N*m (37.1 lbf*in) MINIMUM	2 To 7 kg (4.4 TO 15.4 lbm)	BLACK
AV-D32-30V163-76					5 TO 10 Kg (11 TO 22 lbm)	OFFICE WHITE

THIRD ANGLE PROJECTION		southco CONNECT · CREATE · INNOVATE
MILLIMETERS [IN]		
TOLERANCES UNLESS OTHERWISE NOTED		DESCRIPTION HINGE & CONTROLLED MOTION DEVICE (STANDARD LIFT ARM, WALL MOUNT)
SURFACE AREA	mm ²	
VOLUME	mm ³	SIZE SYSTEM A2 NX
PROPRIETARY ITEM EXCEPT FOR USES EXPRESSLY GRANTED IN WRITING. INFORMATION DISCLOSED HEREON IS CONFIDENTIAL AND ALL RIGHTS, PATENT AND OTHERWISE, ARE RESERVED BY SOUTHCO, INC.		DWG NO. J-AV-D32-30V161
PER ASME Y14.5M-1994		DRAWN BY GEA
		DATE 01FEB2015
		SCALE 1:1
		SHEET 1 OF 4

8

7

6

5

4

3

2

1

REVISION HISTORY			
REV	DATE	BY	DESCRIPTION
C	04MAY2020	GEA/DMS	PRN: P2019-3080

ARM DISPLAY WEIGHT ADJUSTMENT

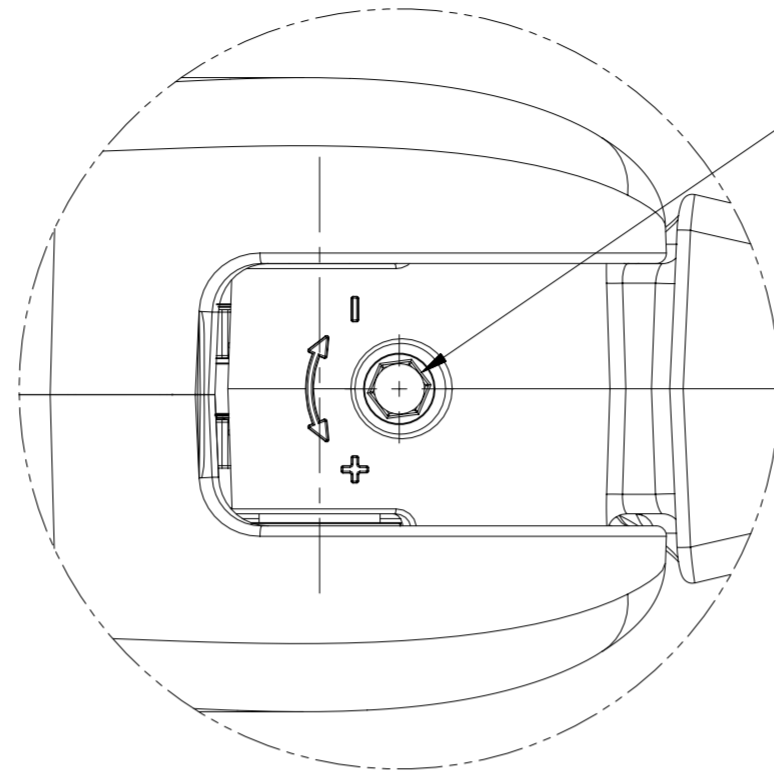
(ARM TO BE ADJUSTED WITH DISPLAY MOUNTED)

DISPLAY WEIGHT ADJUSTMENT
5mm HEX RECESS FOR HEX KEY

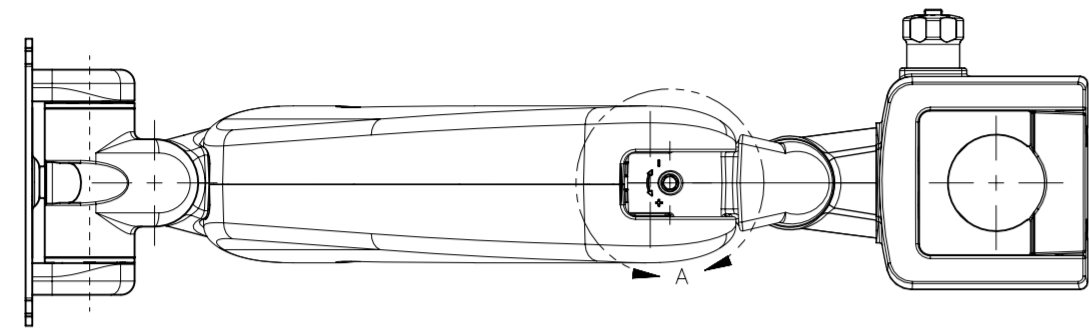
- TURN SCREW CW (CLOCKWISE) TO
DECREASE TENSION FOR A LIGHTER DISPLAY

+ TURN SCREW CCW (COUNTERCLOCKWISE) TO
INCREASE TENSION FOR A HEAVIER DISPLAY

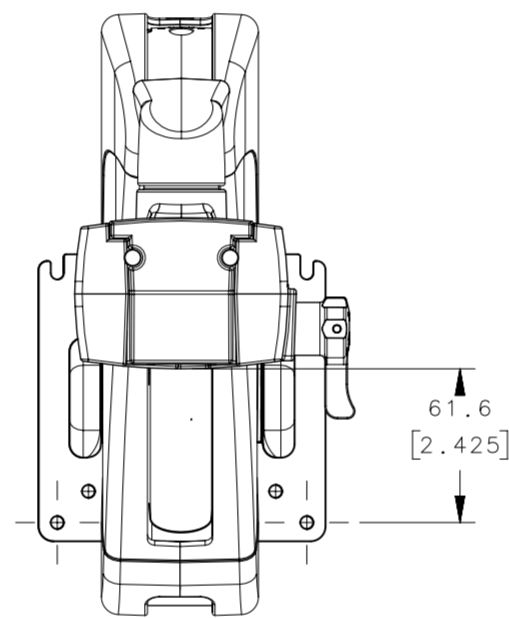
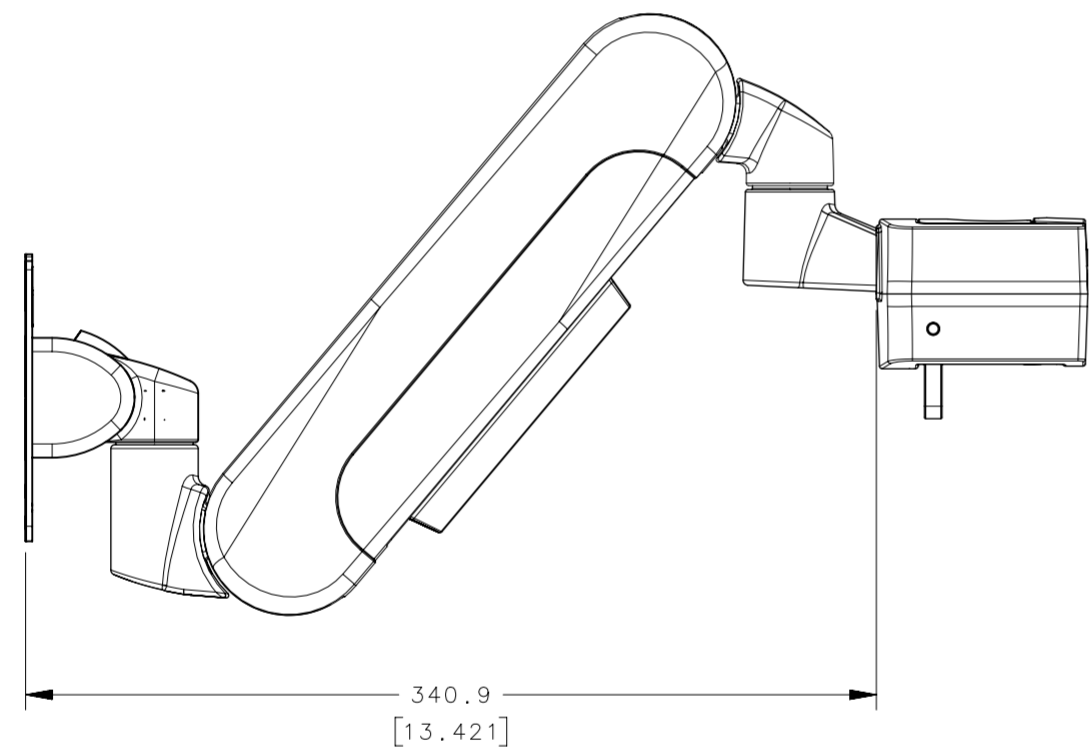
(NOTE: ADJUSTMENT IS EASIER IF ARM IS POSITIONED
BELOW HORIZONTAL WITH THE DISPLAY ATTACHED)



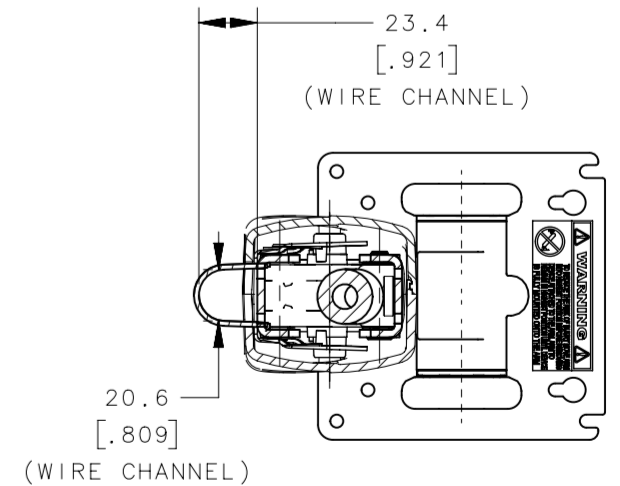
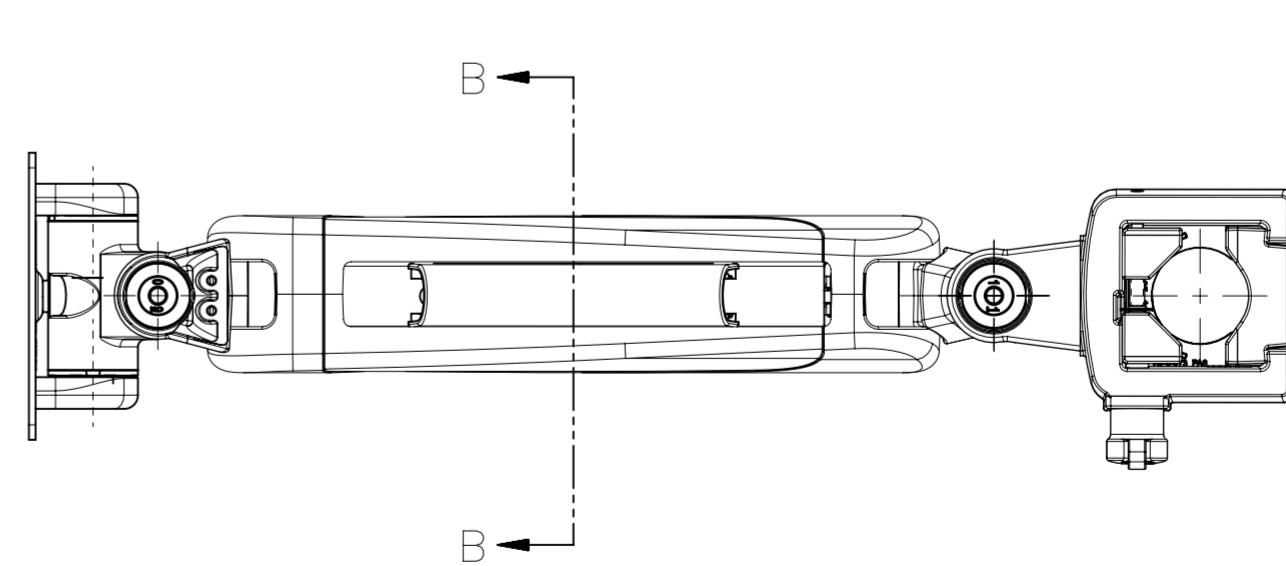
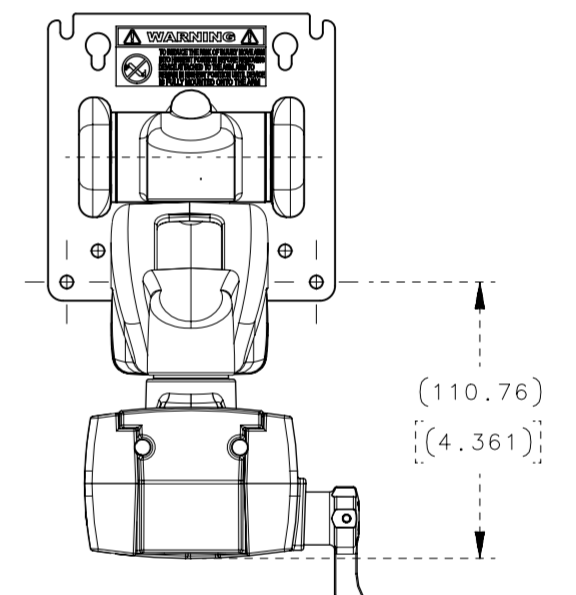
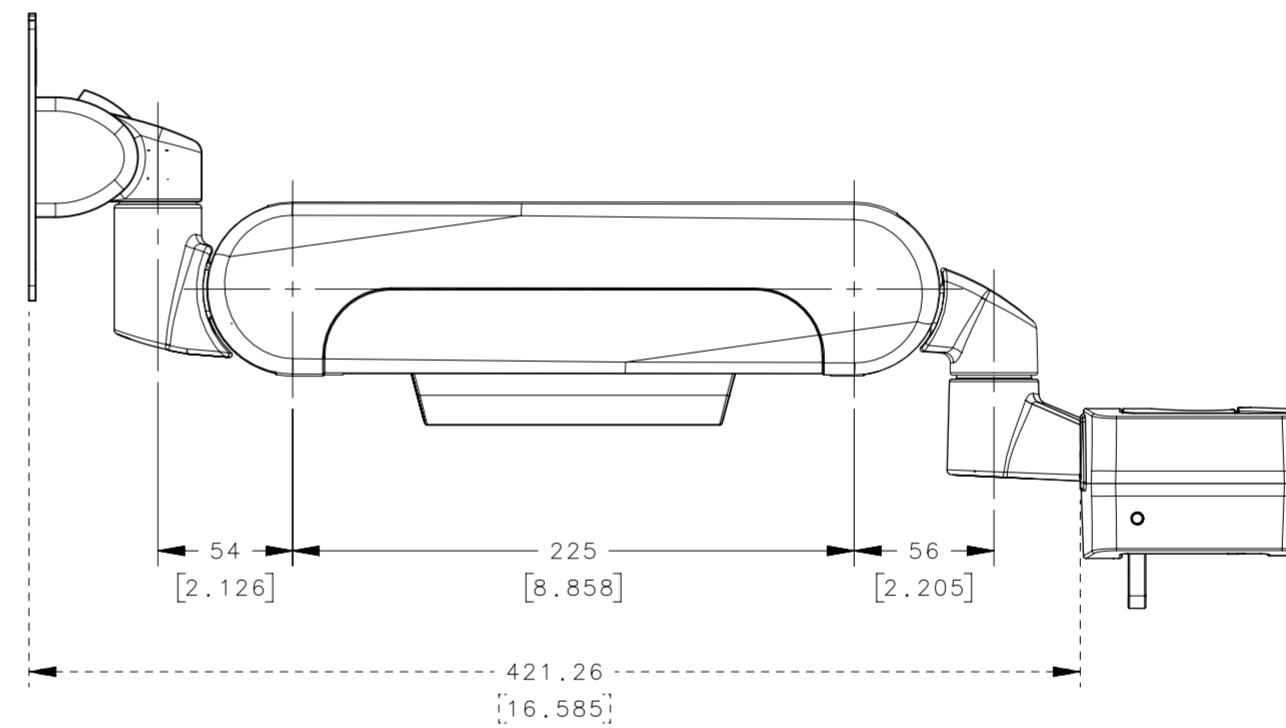
DETAIL A
SCALE 4:3



LOWEST ARM POSITION



HORIZONTAL ARM POSITION



SECTION B-B

THIRD ANGLE PROJECTION				southco CONNECT · CREATE · INNOVATE	
MILLIMETERS [IN]					
SURFACE AREA		TOLERANCES UNLESS OTHERWISE NOTED		DESCRIPTION	
mm ²	UP TO 0.5	+0.1	HINGE & CONTROLLED MOTION DEVICE		
VOLUME	OVER 0.5 UP TO 6	+0.2	(STANDARD LIFT ARM, WALL MOUNT)		
mm ³	OVER 6 UP TO 30	+0.4	SIZE	SYSTEM	DWG. NO.
PROPRIETARY ITEM		OVER 30	A2	NX	J-AV-D32-30V161
EXCEPT FOR USES EXPRESSLY GRANTED IN WRITING, INFORMATION DISCLOSED HEREON IS CONFIDENTIAL AND ALL RIGHTS, PATENT AND OTHERWISE, ARE RESERVED BY SOUTHCO, INC.		ANGLES	PER ASME Y14.5M-1994		DRAWN BY: GEA DATE: 01FEB2015 SCALE: 1:1 SHEET: 2 OF 4

8

7

6

5

4

3

2

1

8

7

6

5

4

3

2

1

REVISION HISTORY			
REV	DATE	BY	DESCRIPTION
C	04MAY2020	GEA/DMS	PRN: P2019-3080

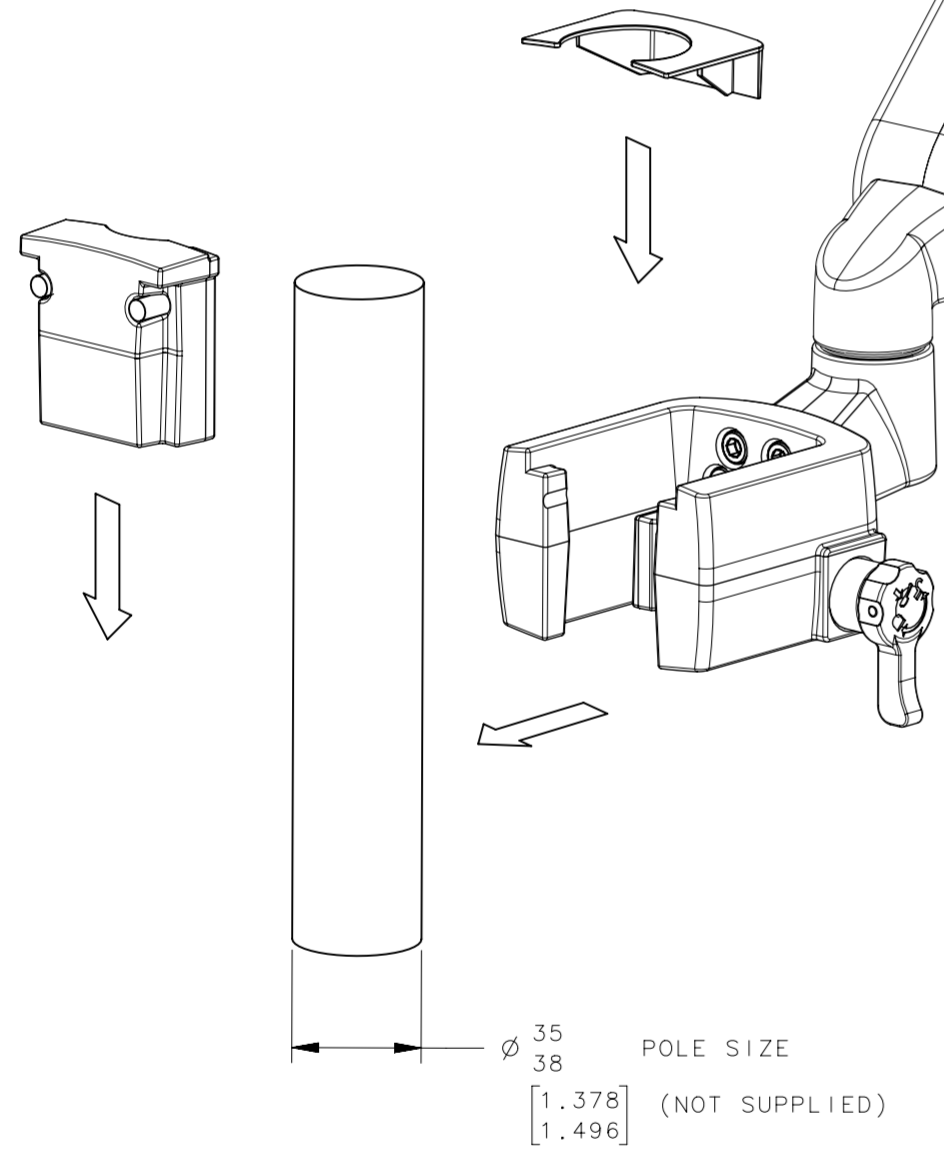
INSTALLATION INSTRUCTIONS:

1. INSERT ARM ASSEMBLY ONTO POLE.
2. SLIDE INSERT BEHIND POLE AND INTO HOUSING TO SECURE POLE IN MOUNT.
3. PUSH AND TURN ADJUSTMENT KNOB CLOCKWISE TO LOCK ARM ASSEMBLY IN THE DESIRED POSITION ON THE POLE.
4. SLIP COVER OVER POLE AND INSERT IN POLE MOUNT HOUSING.

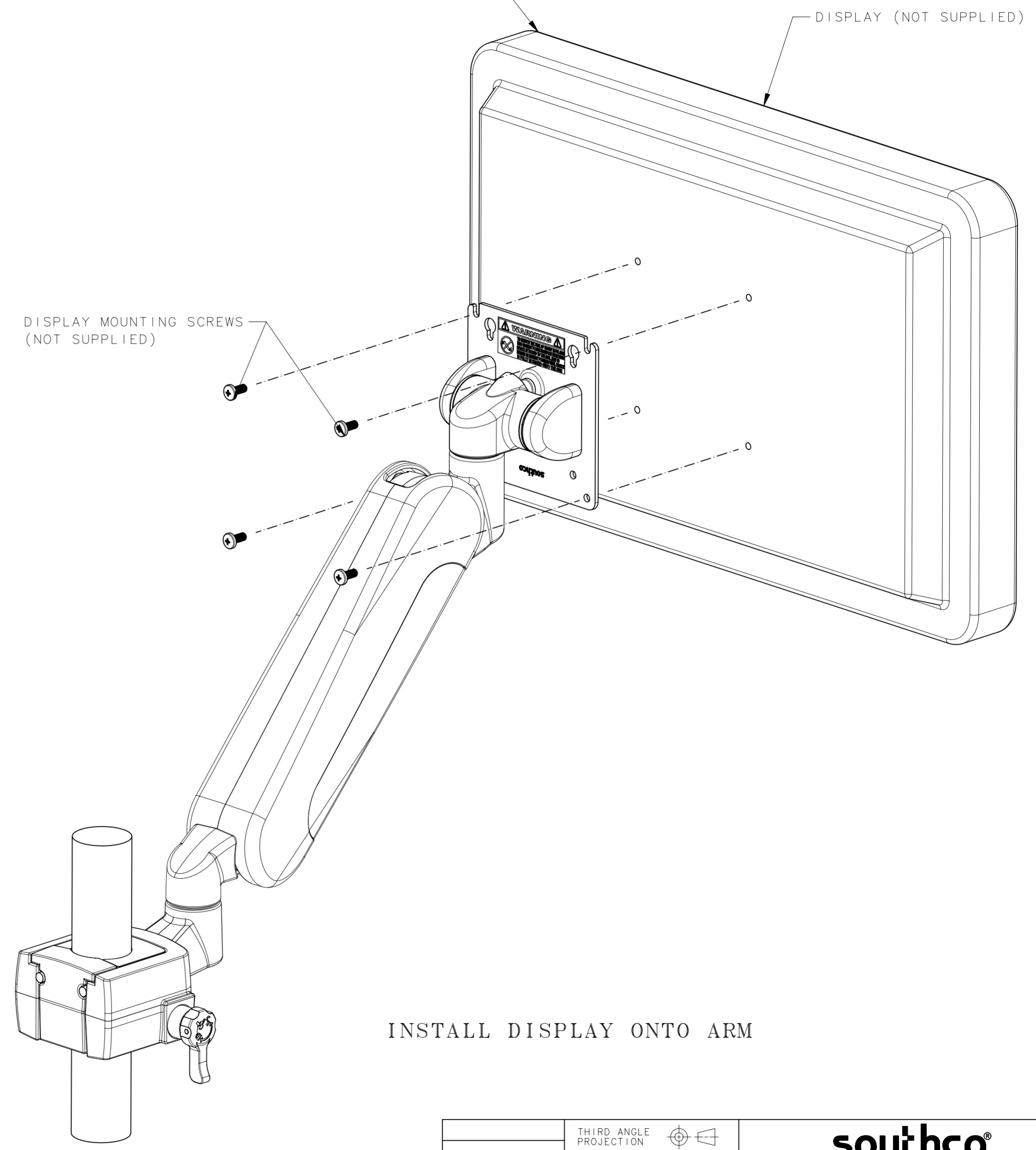
REFER TO TABLE ON SHEET 1 FOR RECOMMENDED DISPLAY WEIGHT RANGE

DISPLAY (NOT SUPPLIED)

DISPLAY MOUNTING SCREWS (NOT SUPPLIED)



MOUNT ARM TO POLE



INSTALL DISPLAY ONTO ARM

THIRD ANGLE PROJECTION				southco CONNECT · CREATE · INNOVATE	
MILLIMETERS [IN]					
SURFACE AREA	mm ²	TOLERANCES UNLESS OTHERWISE NOTED		DESCRIPTION	
		UP TO 0,5		HINGE & CONTROLLED MOTION DEVICE	
		OVER 0,5 UP TO 6		(STANDARD LIFT ARM, WALL MOUNT)	
VOLUME	mm ³	OVER 6 UP TO 30		SIZE	SYSTEM
		OVER 30		A2	NX
		ANGLES		DWG. NO. J-AV-D32-30V161	
PROPRIETARY ITEM		PER ASME Y14.5M-1994		DRAWN BY	DATE
EXCEPT FOR USES EXPRESSLY GRANTED IN WRITING, INFORMATION DISCLOSED HEREON IS CONFIDENTIAL AND ALL RIGHTS, PATENT AND OTHERWISE, ARE RESERVED BY SOUTHCO, INC.				GEA	01FEB2015
				SCALE	SHEET
				1:1	3 OF 4

8

7

6

5

4

3

2

1

8

7

6

5

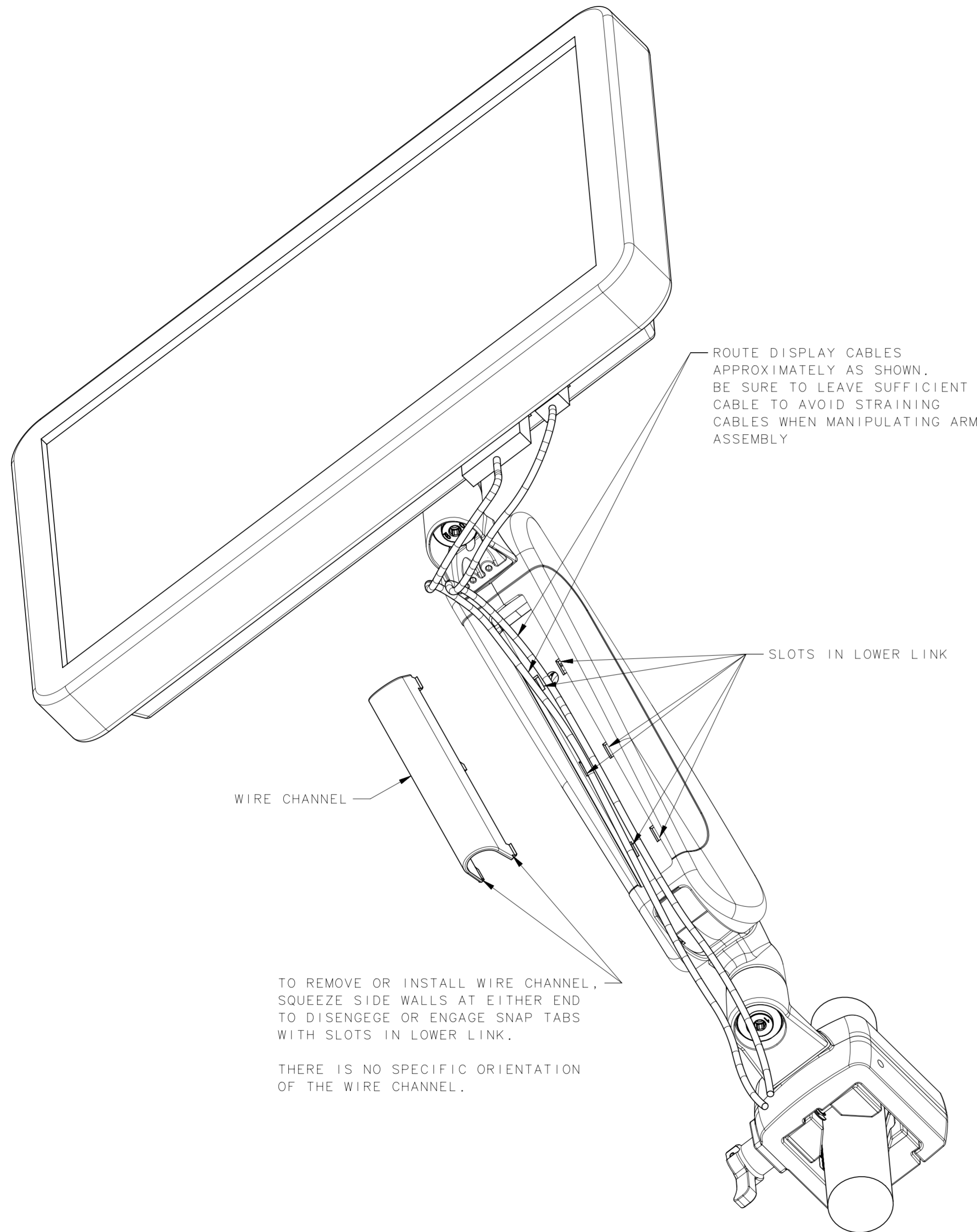
4

3

2

1

REVISION HISTORY			
REV	DATE	BY	DESCRIPTION
C	04MAY2020	GEA/DMS	PRN: P2019-3080



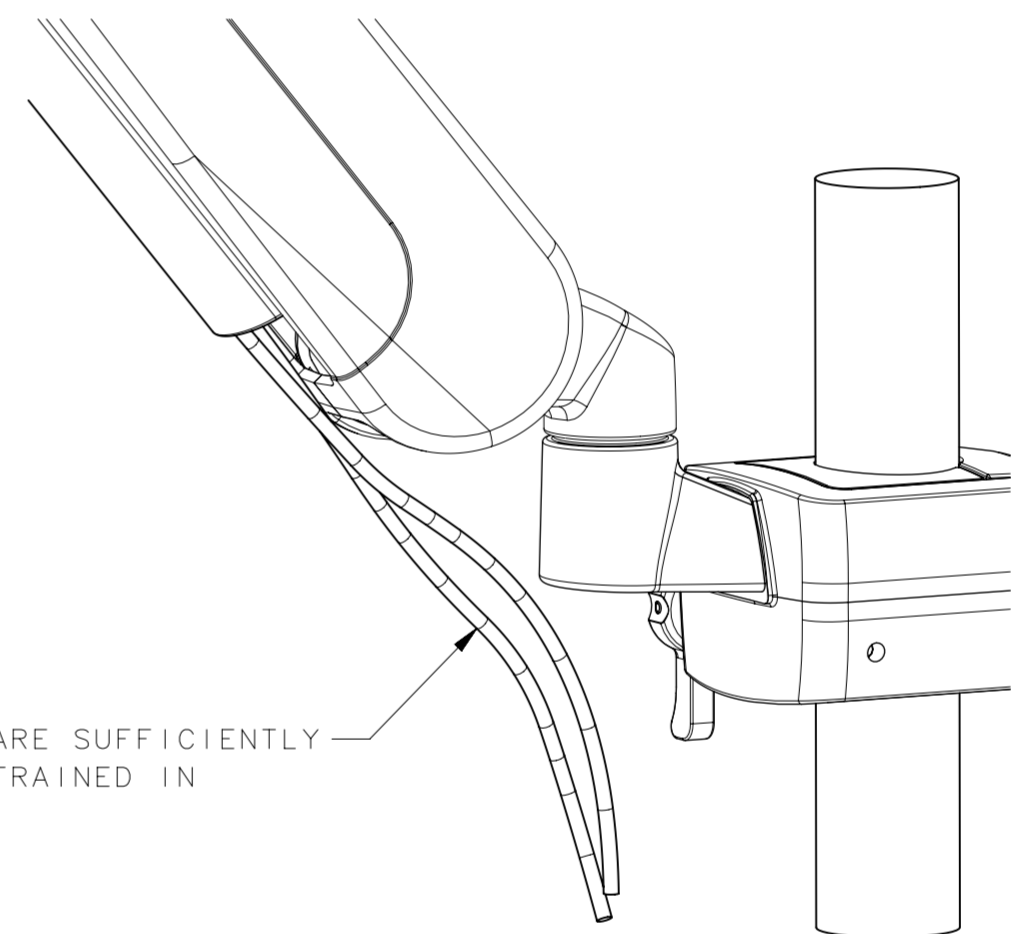
WIRE CHANNEL

ROUTE DISPLAY CABLES APPROXIMATELY AS SHOWN. BE SURE TO LEAVE SUFFICIENT CABLE TO AVOID STRAINING CABLES WHEN MANIPULATING ARM ASSEMBLY

SLOTS IN LOWER LINK

TO REMOVE OR INSTALL WIRE CHANNEL, SQUEEZE SIDE WALLS AT EITHER END TO DISENGE OR ENGAGE SNAP TABS WITH SLOTS IN LOWER LINK.

THERE IS NO SPECIFIC ORIENTATION OF THE WIRE CHANNEL.



MAKE SURE CABLES ARE SUFFICIENTLY SUPPORTED AND RESTRAINED IN APPLICATION.

		THIRD ANGLE PROJECTION	southco CONNECT · CREATE · INNOVATE	
		MILLIMETERS [IN]		
SURFACE AREA		mm ²	DESCRIPTION HINGE & CONTROLLED MOTION DEVICE (STANDARD LIFT ARM, WALL MOUNT)	
VOLUME		mm ³		
PROPRIETARY ITEM				
EXCEPT FOR USES EXPRESSLY GRANTED IN WRITING, INFORMATION DISCLOSED HEREON IS CONFIDENTIAL AND ALL RIGHTS, PATENT AND OTHERWISE, ARE RESERVED BY SOUTHCO, INC.				
TOLERANCES UNLESS OTHERWISE NOTED			SIZE SYSTEM	DWG NO.
UP TO 0.5		±0.1	A2	NX
OVER 0.5 UP TO 6		±0.2	J-AV-D32-30V161	
OVER 6 UP TO 30		±0.4		
OVER 30		±0.6		
ANGLES		±5°		
PER ASME Y14.5M-1994			DRAWN BY	DATE
			GEA	01FEB2015
			SCALE	SHEET
			1:1	4 OF 4

8

7

6

5

4

3

2

1