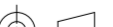

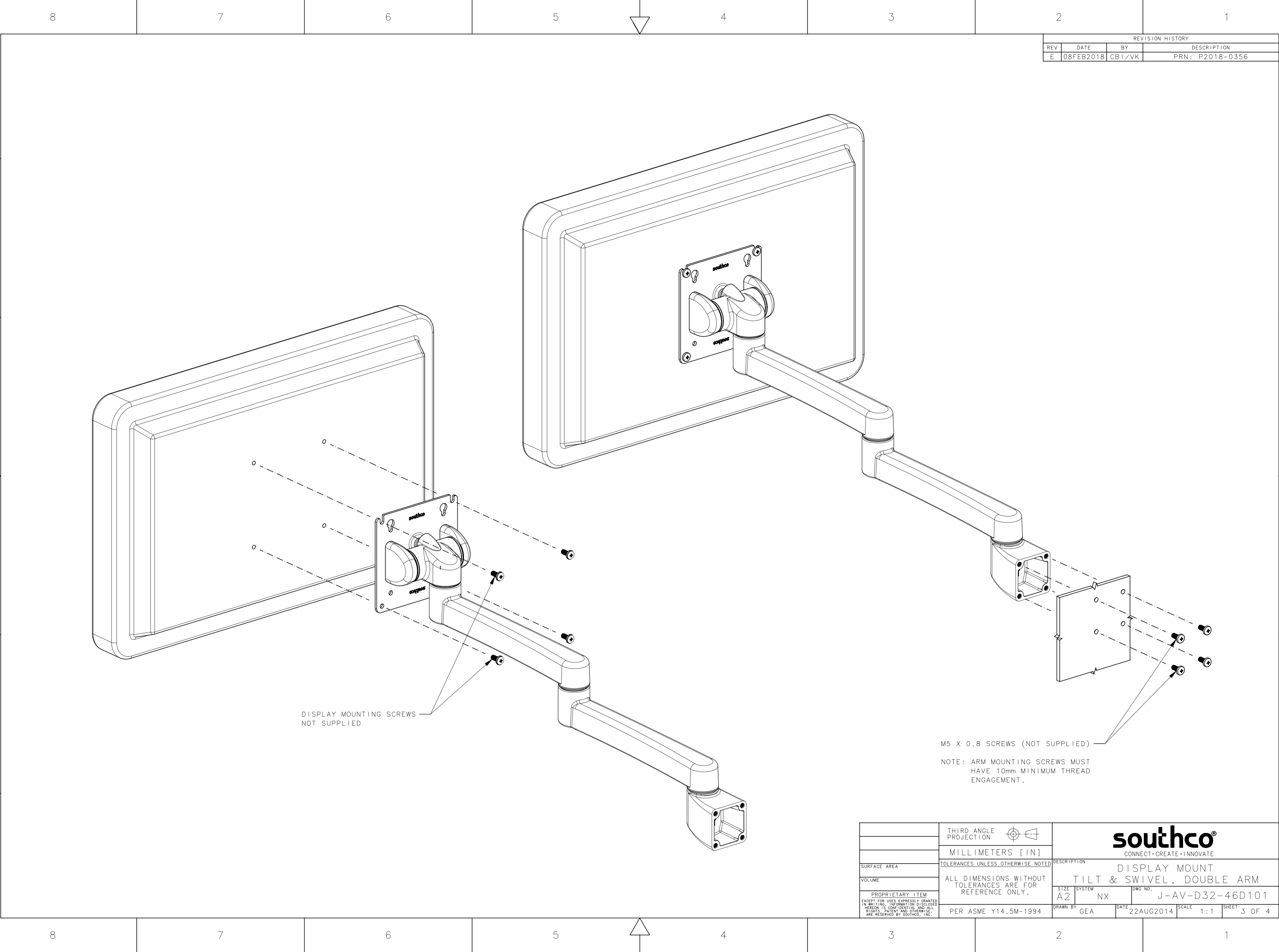
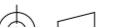



REVISION HISTORY			
REV	DATE	BY	DESCRIPTION
E	08FEB2018	CB1/VK	PRN: P2018-0356

	THIRD ANGLE PROJECTION			 CONNECT • CREATE • INNOVATE			
	MILLIMETERS [IN]						
SURFACE AREA	TOLERANCES UNLESS OTHERWISE NOTED			DESCRIPTION			
	ALL DIMENSIONS WITHOUT TOLERANCES ARE FOR REFERENCE ONLY.			DISPLAY MOUNT			
VOLUME				TILT & SWIVEL, DOUBLE ARM			
PROPRIETARY ITEM	PER ASME Y14.5M-1994			SIZE A2	SYSTEM NX	DWG NO. J-AV-D32-46D101	
EXCEPT FOR USES EXPRESSLY GRANTED IN WRITING, INFORMATION DISCLOSED HEREON IS CONFIDENTIAL AND ALL RIGHTS, PATENT AND OTHERWISE, ARE RESERVED BY SOUTHCO, INC.				DRAWN BY GEA	DATE 22AUG2014	SCALE 1:1	SHEET 2 OF 4



REVISION HISTORY			
REV	DATE	BY	DESCRIPTION
E	08FEB2018	CB1/VK	PRN: P2018-0356

	THIRD ANGLE PROJECTION			 CONNECT • CREATE • INNOVATE			
	MILLIMETERS [IN]						
SURFACE AREA	TOLERANCES UNLESS OTHERWISE NOTED			DESCRIPTION			
	ALL DIMENSIONS WITHOUT TOLERANCES ARE FOR REFERENCE ONLY.			DISPLAY MOUNT TILT & SWIVEL, DOUBLE ARM			
VOLUME				SIZE A2	SYSTEM NX	DWG NO. J-AV-D32-46D101	
PROPRIETARY ITEM	PER ASME Y14.5M-1994			DRAWN BY	DATE	SCALE	SHEET
EXCEPT FOR USES EXPRESSLY GRANTED IN WRITING, INFORMATION DISCLOSED HEREON IS CONFIDENTIAL AND ALL RIGHTS, PATENT AND OTHERWISE, ARE RESERVED BY SOUTHCO, INC.				GEA	22AUG2014	1:1	3 OF 4

