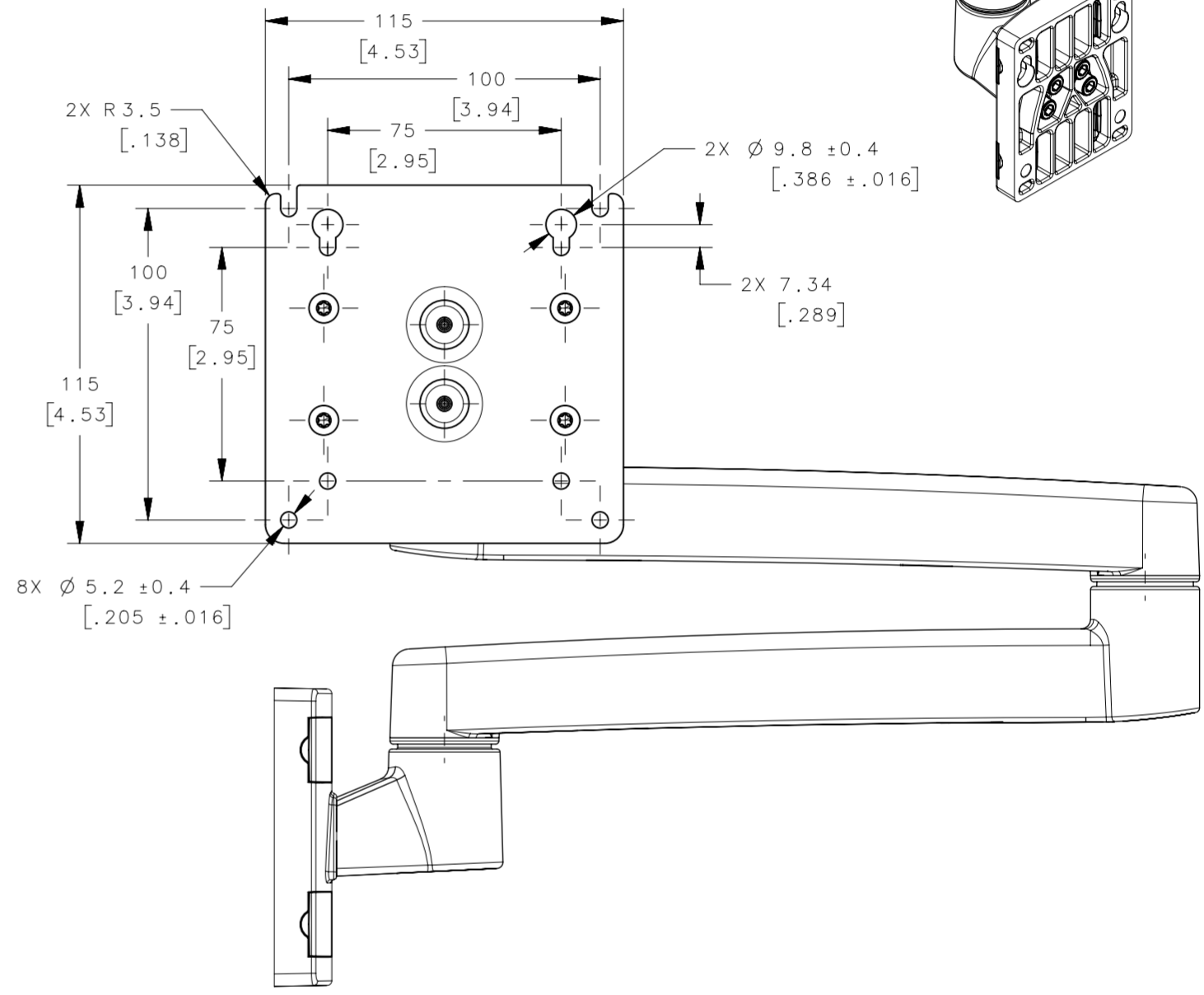
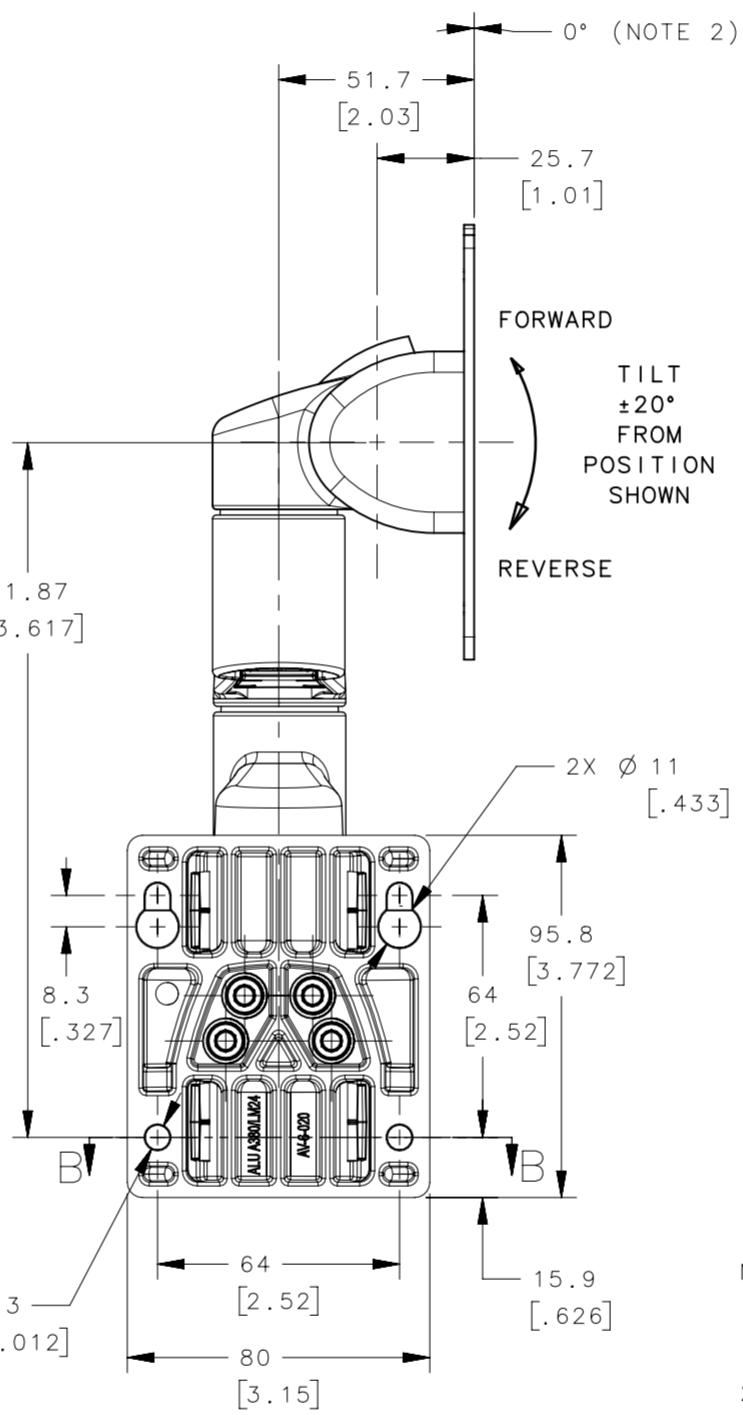
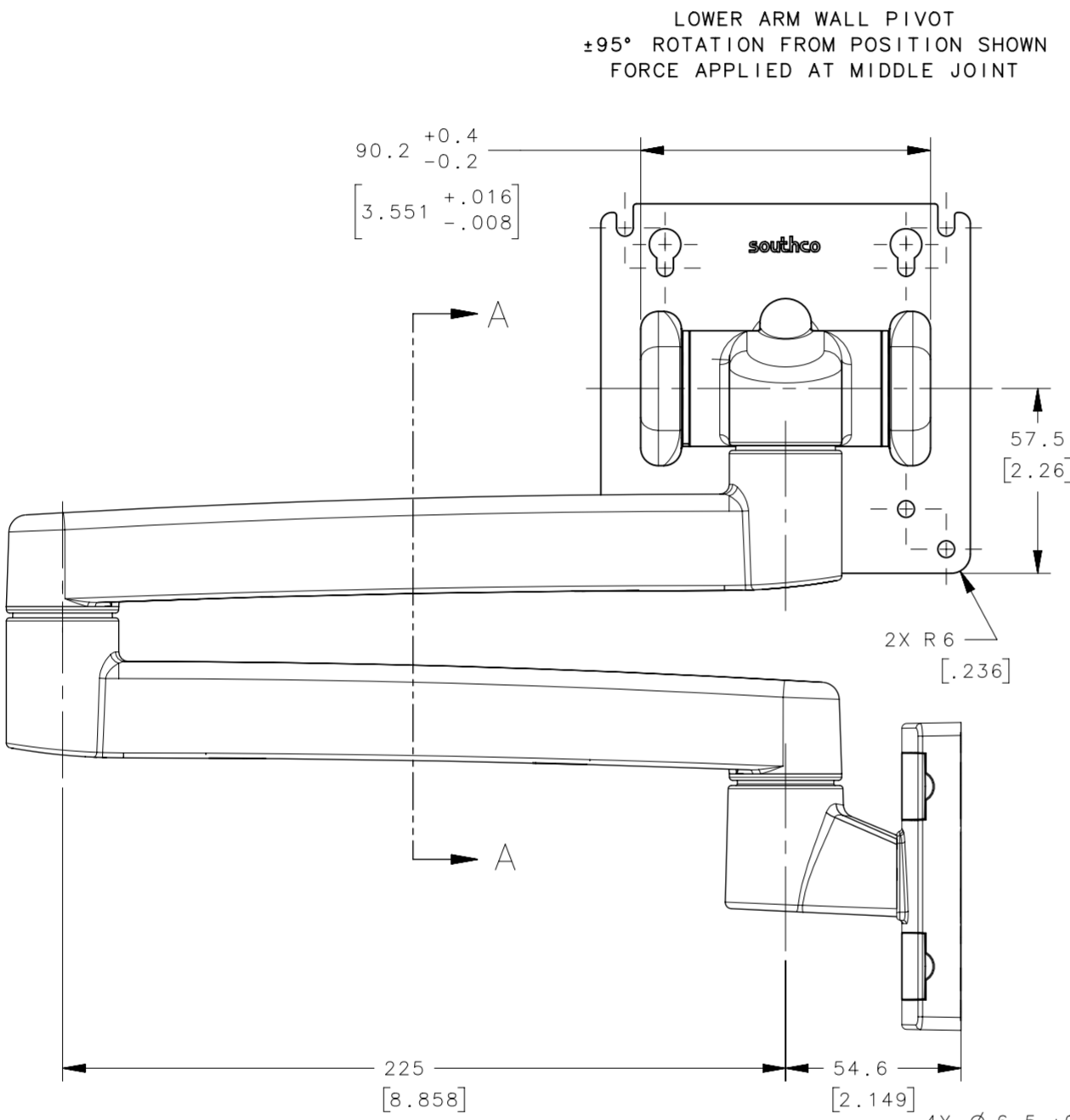
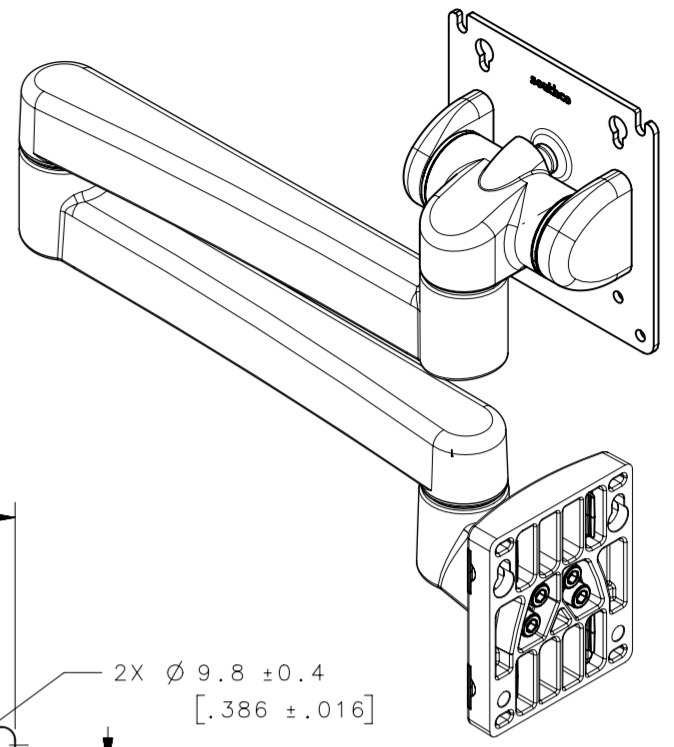
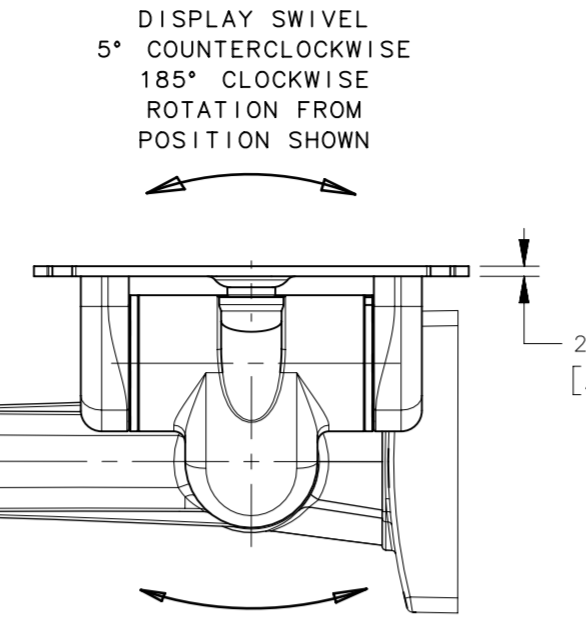
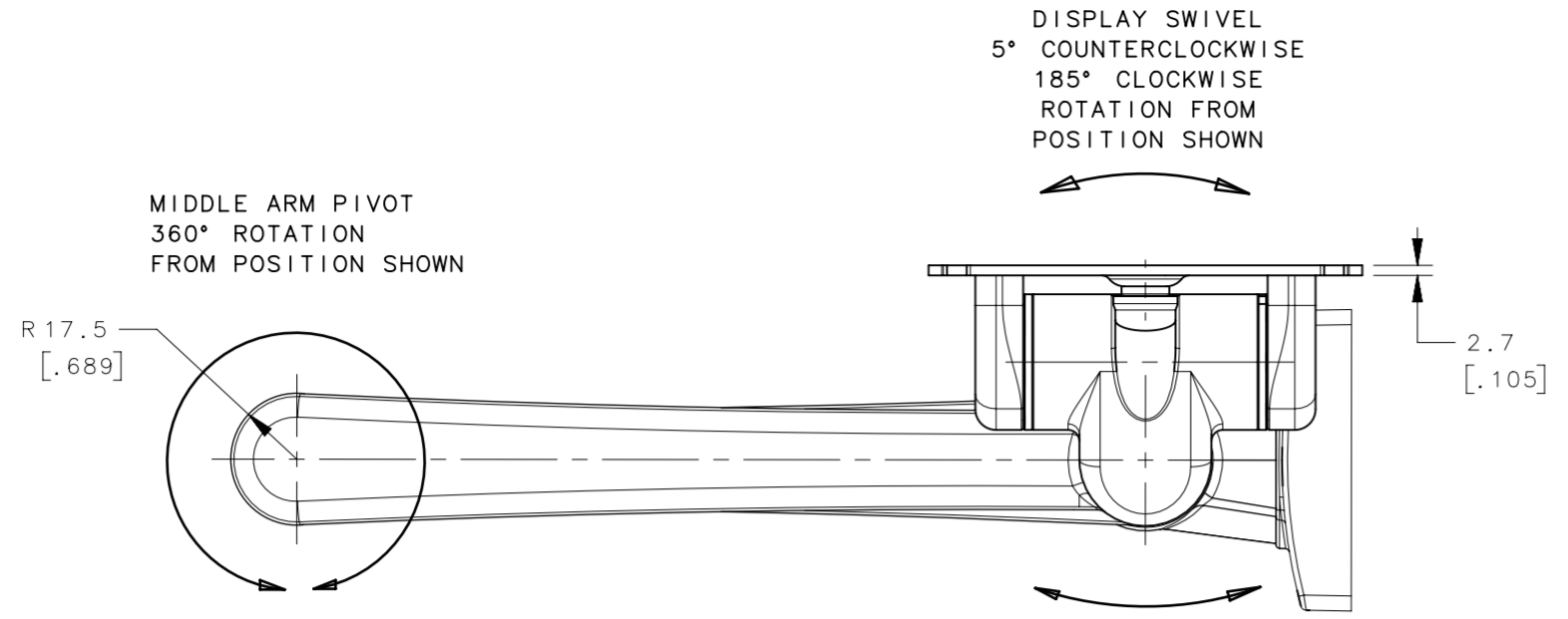


REVISION HISTORY			
REV	DATE	BY	DESCRIPTION
B	28MAY2020	GEA/DMS	PRN: P2020-0960



- NOTES:
- FINISH PER SOUTHCO COSMETIC SPECIFICATION: S-121 CLASS C EXTERIOR POWDER COATED SURFACES, PLASTIC PARTS CLASS B EXTERIOR VISIBLE SURFACES.
 - TILT TORQUE MEASURED WITH VESA DISPLAY PLATE IN THE VERTICAL (0° ± 5°) POSITION WHEN TILTING IN THE REVERSE DIRECTION. THE TILT TORQUE VARIES WITH THE COUNTERBALANCE (WHEN EQUIPPED) IN THE FORWARD AND REVERSE DIRECTIONS.
 - DISPLAY MOUNTING PLATE TO HOUSING ANGULAR FREE PLAY TO BE 1.5° MAXIMUM.
 - MATERIALS AND FINISHES:
ADAPTERS: DIE CAST ALUMINUM ANODIZED AND POWDER COATED
ARMS, TILT HOUSING, SWIVEL HOUSING AND ARM MOUNT PLATE: DIE CAST ALUMINUM, POWDER COATED
TILT SLEEVE AND THRUST WASHER: ACETAL, BLACK
COILED PIN: STEEL, PHOSPHATE COATED
TILT SHAFT, TORQUE ELEMENTS AND STOP WASHER: STEEL, NATURAL FINISH
TORSION SPRING: CARBON STEEL, NICKEL PLATED
DISPLAY SCREWS: STEEL, BLACK OXIDE
DISPLAY STOPS: POLYETHYLENE, WHITE
SWIVEL SHAFT: STAINLESS STEEL AND NYLON
WIRE COVER AND HARDWARE COVERS: PC/ABS,
M6 CAP SCREWS: ALLOY STEEL, BLACK OXIDE
M6 FLAT WASHERS: STEEL, ZINC PLATED
LUBRICANT: HYDROCARBON BASE

WIRE COVER SHOWN INSTALLED
(SHIPS UNASSEMBLED FOR
USER INSTALLATION)

SECTION B-B

PART NUMBER	FORWARD TILT TORQUE N*m (lbf*in)	REVERSE TILT TORQUE N*m (lbf*in)	DISPLAY SWIVEL SYMMETRIC TORQUE N*m (lbf*in)	SYMMETRIC TORQUE TO MOVE LOWER ARM ASSEMBLY N*m (lbf*in)	SYMMETRIC TORQUE TO MOVE UPPER ARM ASSEMBLY N*m (lbf*in)	COLOR
AV-D32-46D141-50	1.13 (10)	7.9 (70)	4.29 (38) NOMINAL / 2.17 (24) MINIMUM	9.8 (87) NOMINAL / 5.08 (45) MINIMUM	9.8 (87) NOMINAL / 5.08 (45) MINIMUM	BLACK
AV-D32-46D141-76						OFFICE WHITE
AV-D32-46D142-50	2.26 (20)	15.4 (136)	4.29 (38) NOMINAL / 2.17 (24) MINIMUM	9.8 (87) NOMINAL / 5.08 (45) MINIMUM	9.8 (87) NOMINAL / 5.08 (45) MINIMUM	BLACK
AV-D32-46D142-76						OFFICE WHITE
AV-D32-46D143-50	6.0 (53)	8.6 (76)	4.29 (38) NOMINAL / 2.17 (24) MINIMUM	9.8 (87) NOMINAL / 5.08 (45) MINIMUM	9.8 (87) NOMINAL / 5.08 (45) MINIMUM	BLACK
AV-D32-46D143-76						OFFICE WHITE

THIRD ANGLE PROJECTION		southco CONNECT · CREATE · INNOVATE
MASS	1.55 kg.	
SURFACE AREA		DISPLAY MOUNT
VOLUME		TILT & SWIVEL, DOUBLE ARM
PROPRIETARY ITEM	EXCEPT FOR USES EXPRESSLY GRANTED IN WRITING, INFORMATION DISCLOSED HEREON IS CONFIDENTIAL AND ALL RIGHTS, PATENT AND OTHERWISE, ARE RESERVED BY SOUTHCO, INC.	SIZE SYSTEM A2 NX
PER ASME Y14.5M-1994	DRAWN BY PC	DWG NO. J-AV-D32-46D141
	DATE 30AUG2016	SCALE 1:1
		SHEET 1 OF 4

8

7

6

5

4

3

2

1

REVISION HISTORY			
REV	DATE	BY	DESCRIPTION
B	28MAY2020	GEA/DMS	PRN: P2020-0960

DISPLAY SWIVEL
±95°
FROM POSITION
SHOWN

UPPER ARM TO LOWER ARM
360° FROM POSITION
SHOWN

LOWER ARM TO ARM MOUNT
±95°
FROM POSITION SHOWN

TILT
+20° REVERSE
-20° FORWARD
FROM POSITION
SHOWN

FORWARD
REVERSE

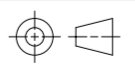

25.7
[1.011]

26
[1.024]

225
[8.858]

556.3
[21.9]

225
[8.858]

	THIRD ANGLE PROJECTION			 CONNECT · CREATE · INNOVATE	
	MILLIMETERS [IN]				
SURFACE AREA	TOLERANCES UNLESS OTHERWISE NOTED		DESCRIPTION		
VOLUME	ALL DIMENSIONS WITHOUT TOLERANCES ARE FOR REFERENCE ONLY.		TILT & SWIVEL, DOUBLE ARM		
PROPRIETARY ITEM	PER ASME Y14.5M-1994		SIZE	SYSTEM	DWG NO.
EXCEPT FOR USES EXPRESSLY GRANTED IN WRITING, INFORMATION DISCLOSED HEREON IS CONFIDENTIAL AND ALL RIGHTS, PATENT AND OTHERWISE, ARE RESERVED BY SOUTHCO, INC.	DRAWN BY		PC	DATE	30AUG2016
	SCALE		1:1	SHEET 2 OF 4	

8

7

6

5

4

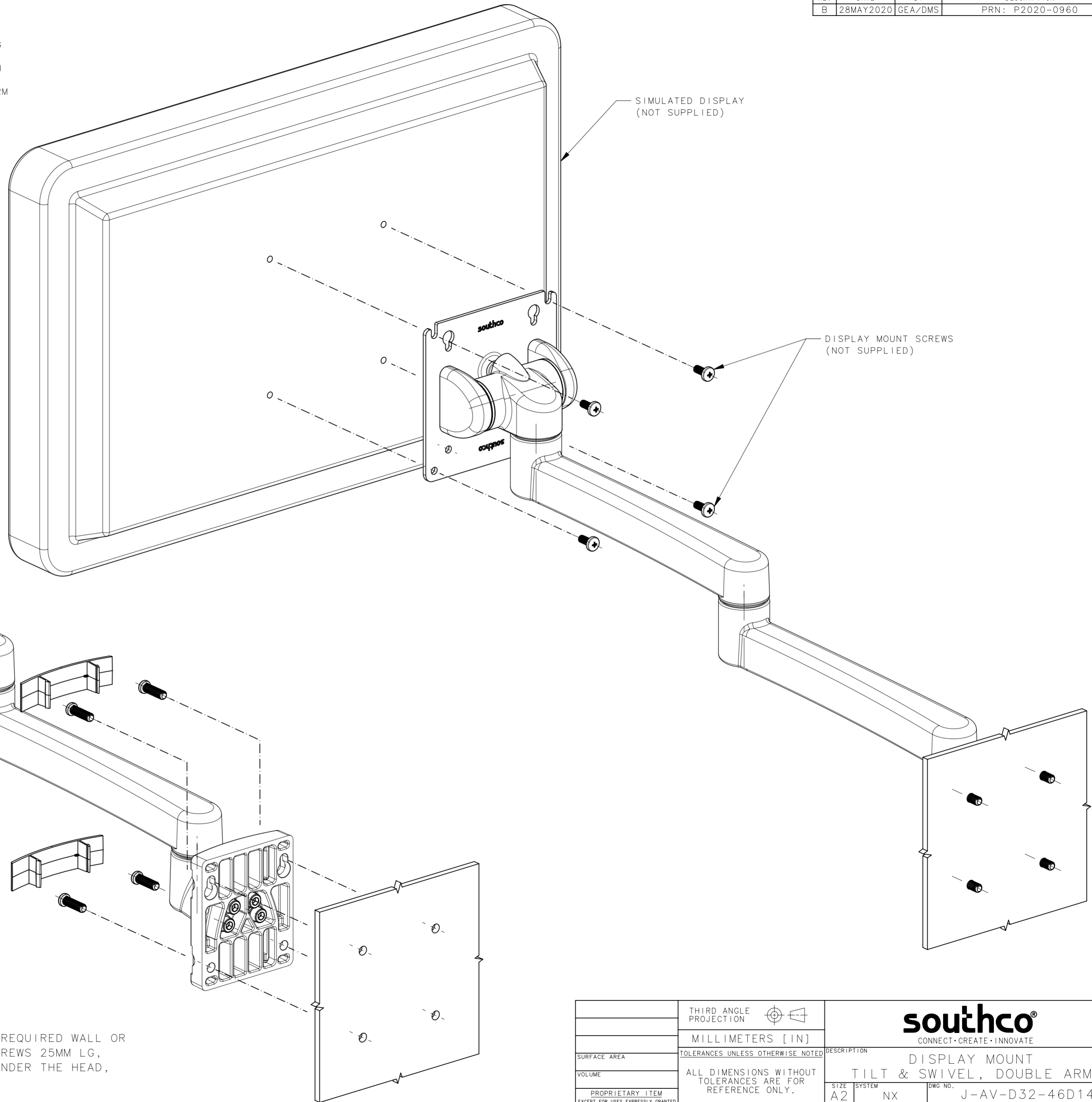
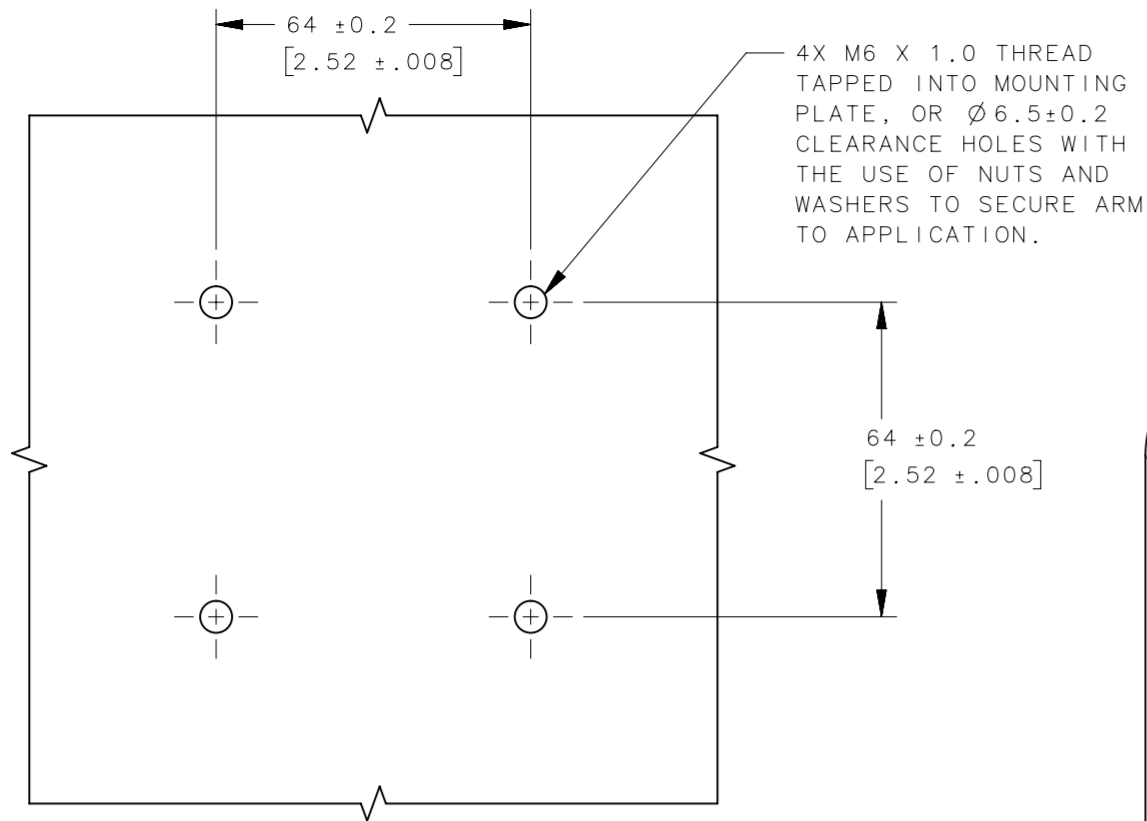
3

2

1

PANEL PREPARATION

REVISION HISTORY			
REV	DATE	BY	DESCRIPTION
B	28MAY2020	GEA/DMS	PRN: P2020-0960



ARM MOUNT NOTE:

1. ALIGN MOUNTING HOLES OF ARM ADAPTER WITH HOLES OF REQUIRED WALL OR ACCESSORY MOUNT AND SECURE USING 4 EA. M6 X 1.0 SCREWS 25MM LG, HIGH TENSILE, 12.9 GRADE, WITH M6 PLAIN WASHERS, UNDER THE HEAD, TIGHTENING TO 14 Nm TO 16 Nm.

THIRD ANGLE PROJECTION			
MILLIMETERS [IN]			
SURFACE AREA		DESCRIPTION	
VOLUME		TILT & SWIVEL, DOUBLE ARM	
PROPRIETARY ITEM		SIZE	DWG NO.
EXCEPT FOR USES EXPRESSLY GRANTED IN WRITING, INFORMATION DISCLOSED HEREON IS CONFIDENTIAL AND ALL RIGHTS, PATENT AND OTHERWISE, ARE RESERVED BY SOUTHCO, INC.		A2 NX	J-AV-D32-46D141
PER ASME Y14.5M-1994		DRAWN BY	SCALE
		PC	1:1
		DATE	SHEET
		30AUG2016	3 OF 4

8

7

6

5

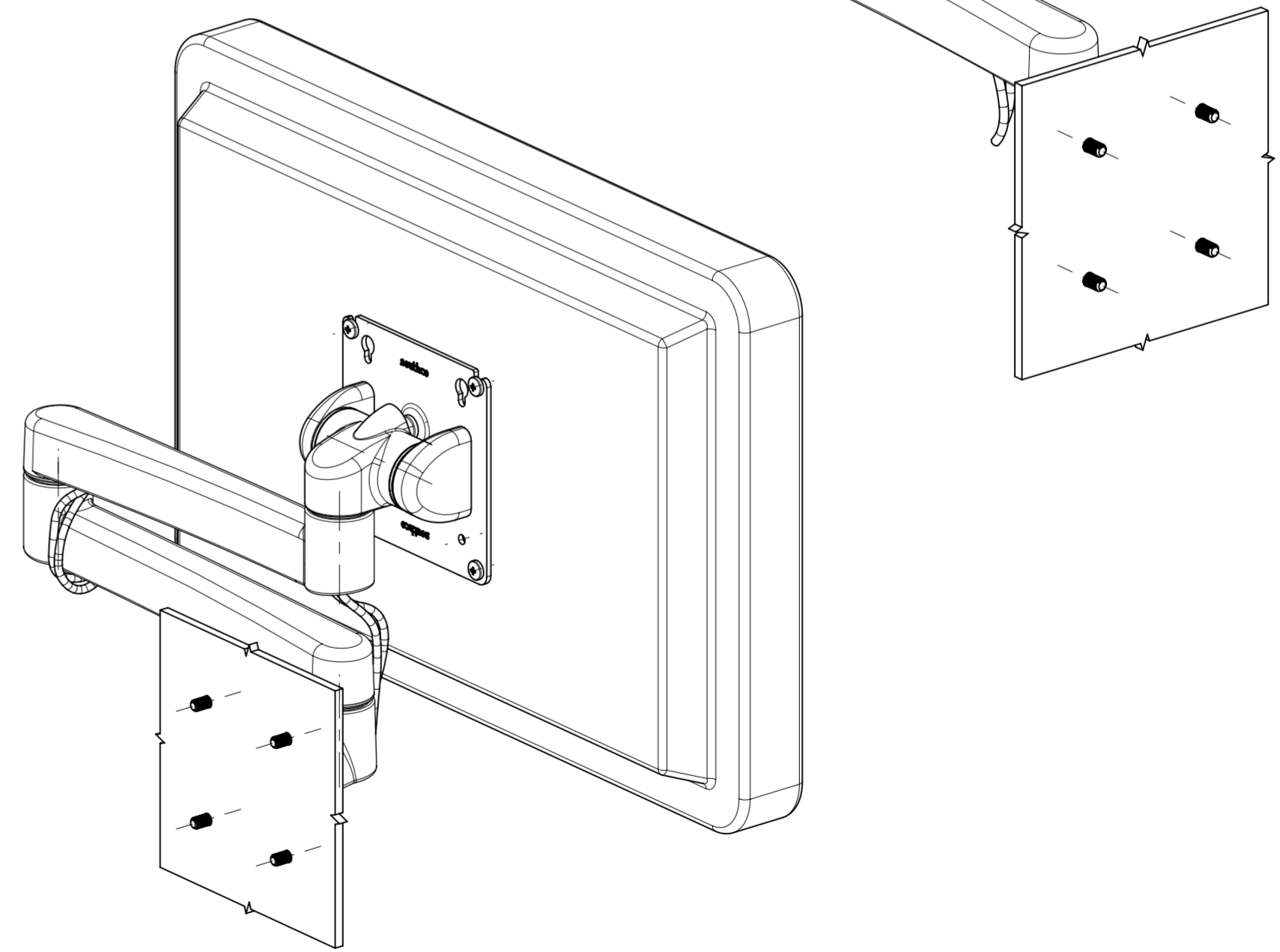
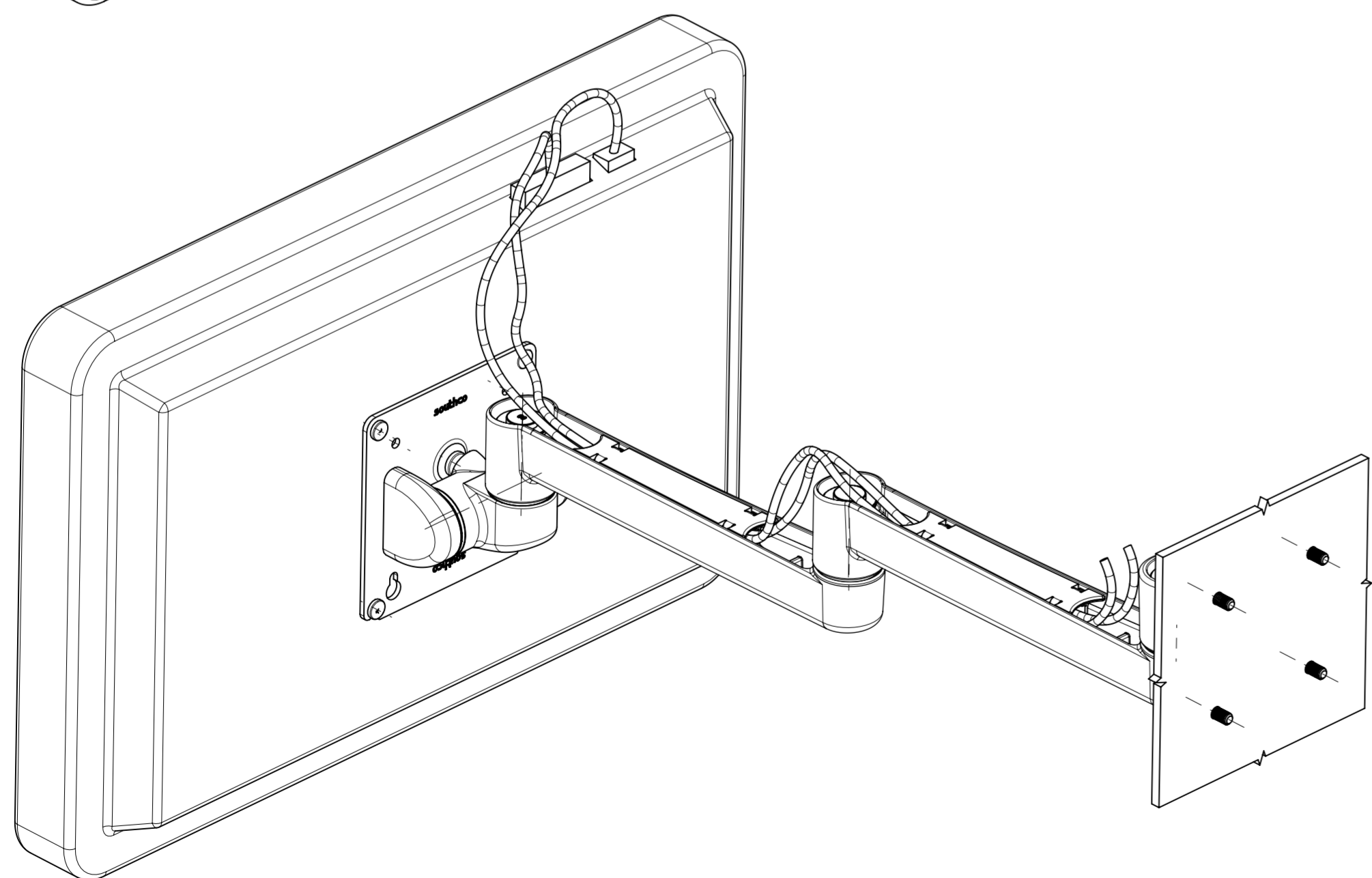
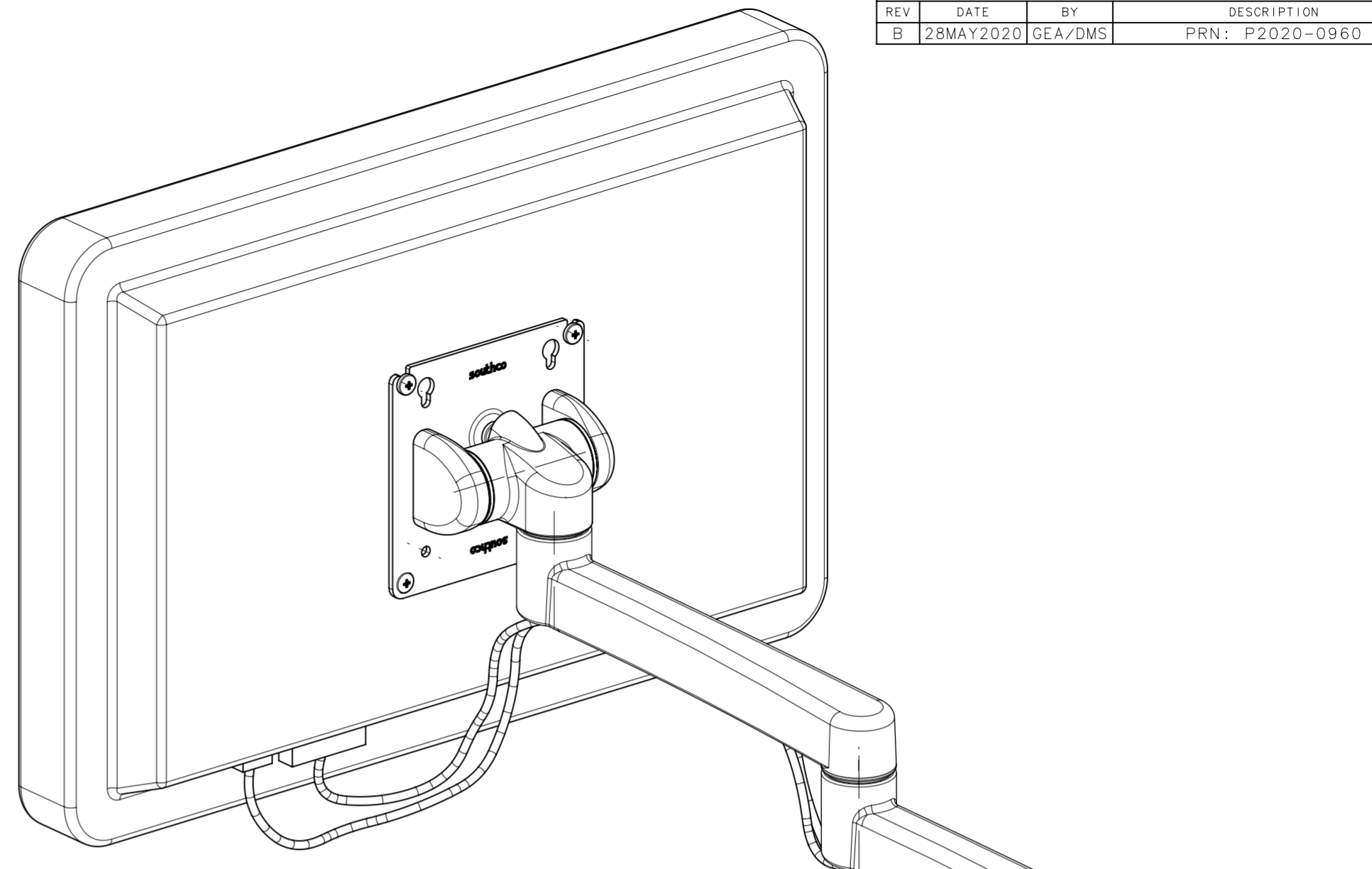
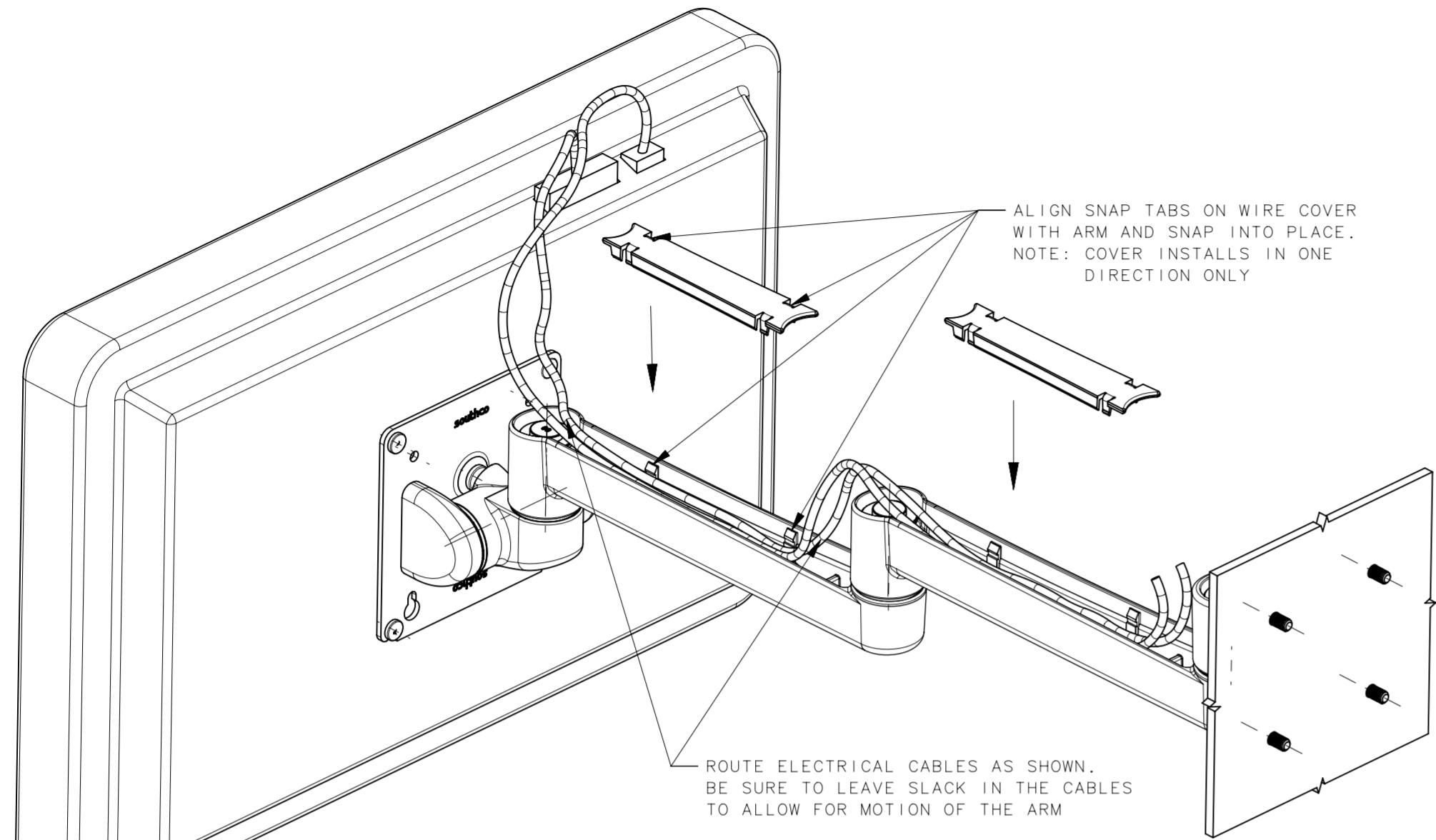
4

3

2

1

REVISION HISTORY			
REV	DATE	BY	DESCRIPTION
B	28MAY2020	GEA/DMS	PRN: P2020-0960



THIRD ANGLE PROJECTION				southco CONNECT · CREATE · INNOVATE	
MILLIMETERS [IN]					
SURFACE AREA		TOLERANCES UNLESS OTHERWISE NOTED		DESCRIPTION	
VOLUME		ALL DIMENSIONS WITHOUT TOLERANCES ARE FOR REFERENCE ONLY.		DISPLAY MOUNT TILT & SWIVEL, DOUBLE ARM	
PROPRIETARY ITEM		PER ASME Y14.5M-1994		SIZE SYSTEM A2 NX	
EXCEPT FOR USES EXPRESSLY GRANTED IN WRITING, INFORMATION DISCLOSED HEREON IS CONFIDENTIAL AND ALL RIGHTS, PATENT AND OTHERWISE, ARE RESERVED BY SOUTHCO, INC.		DRAWN BY PC		DWG NO. J-AV-D32-46D141	
		DATE 30AUG2016		SCALE 1:1 SHEET 4 OF 4	

8

7

6

5

4

3

2

1