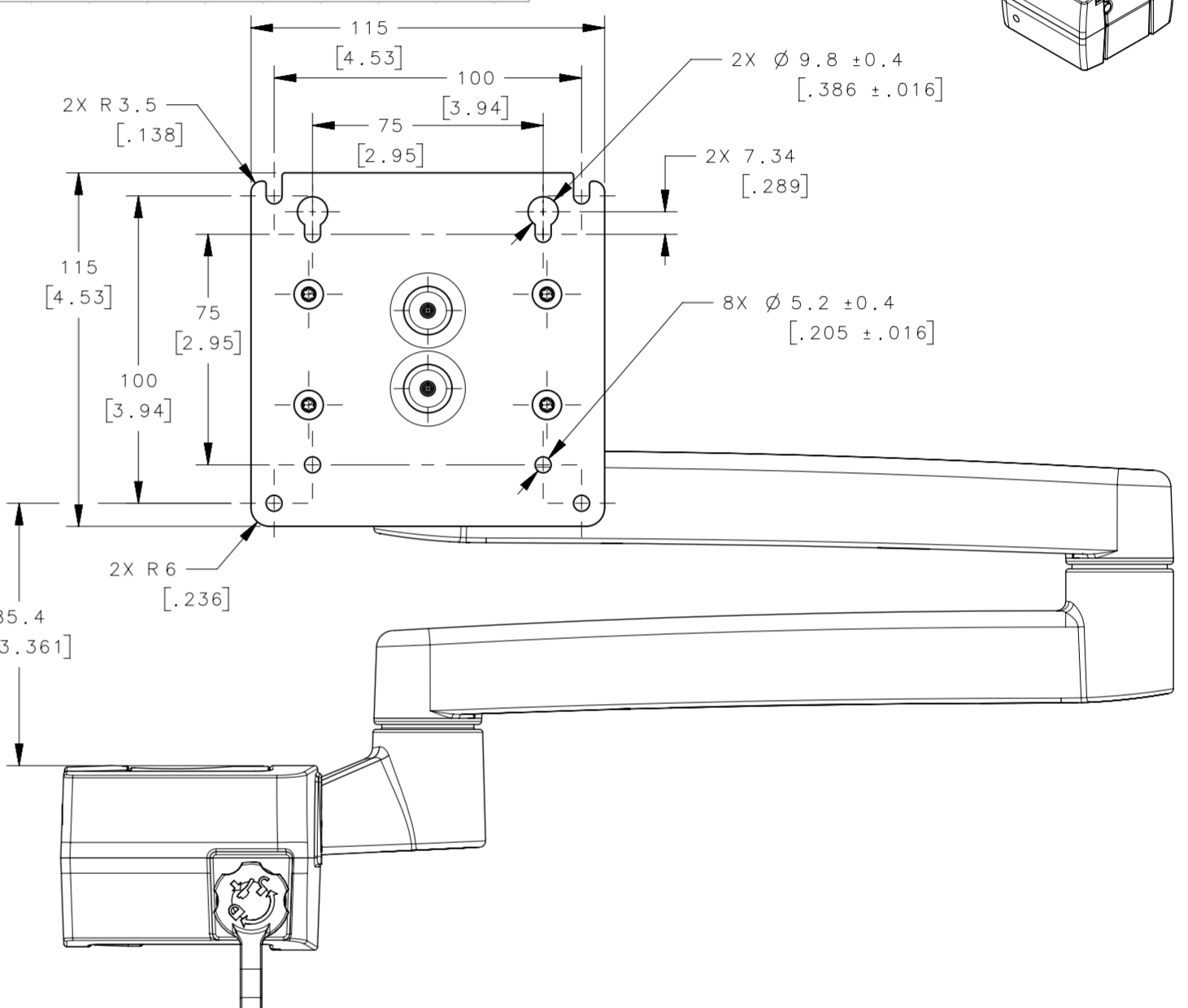
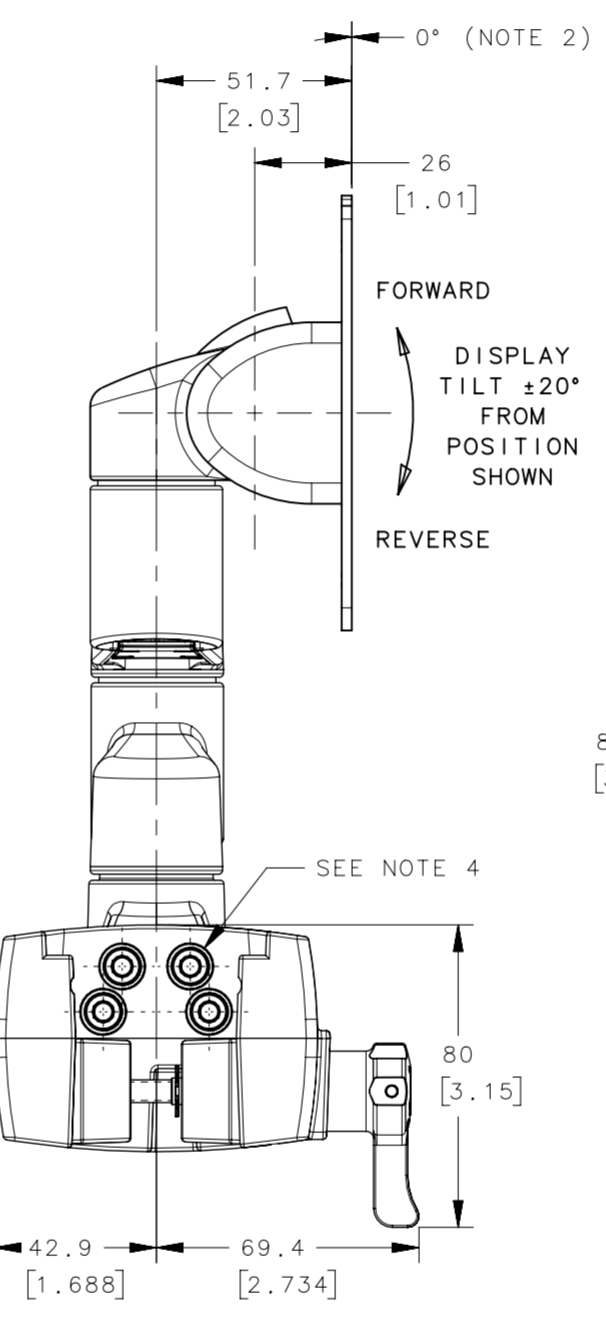
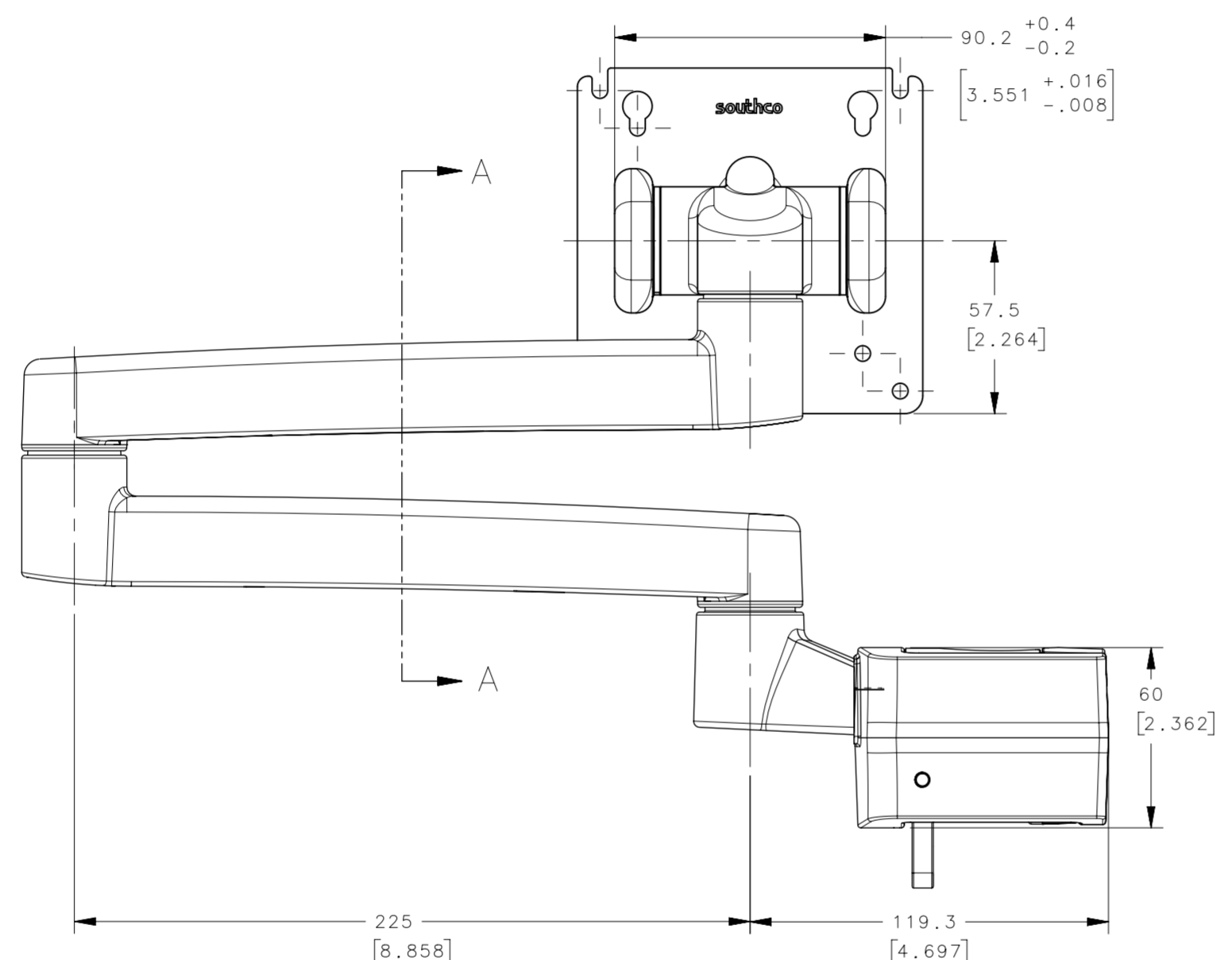
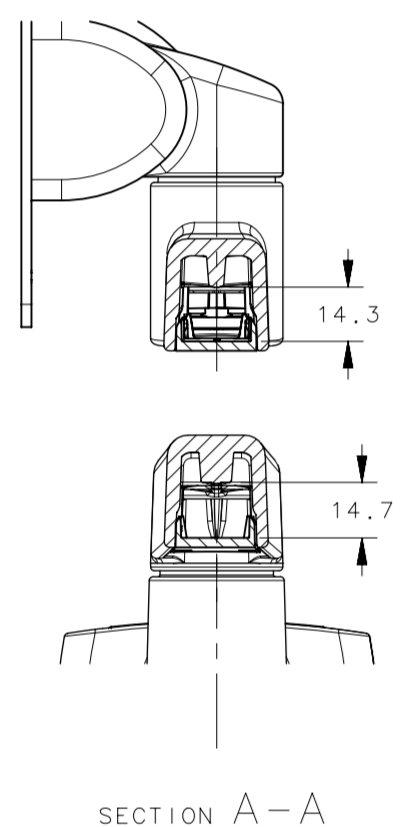
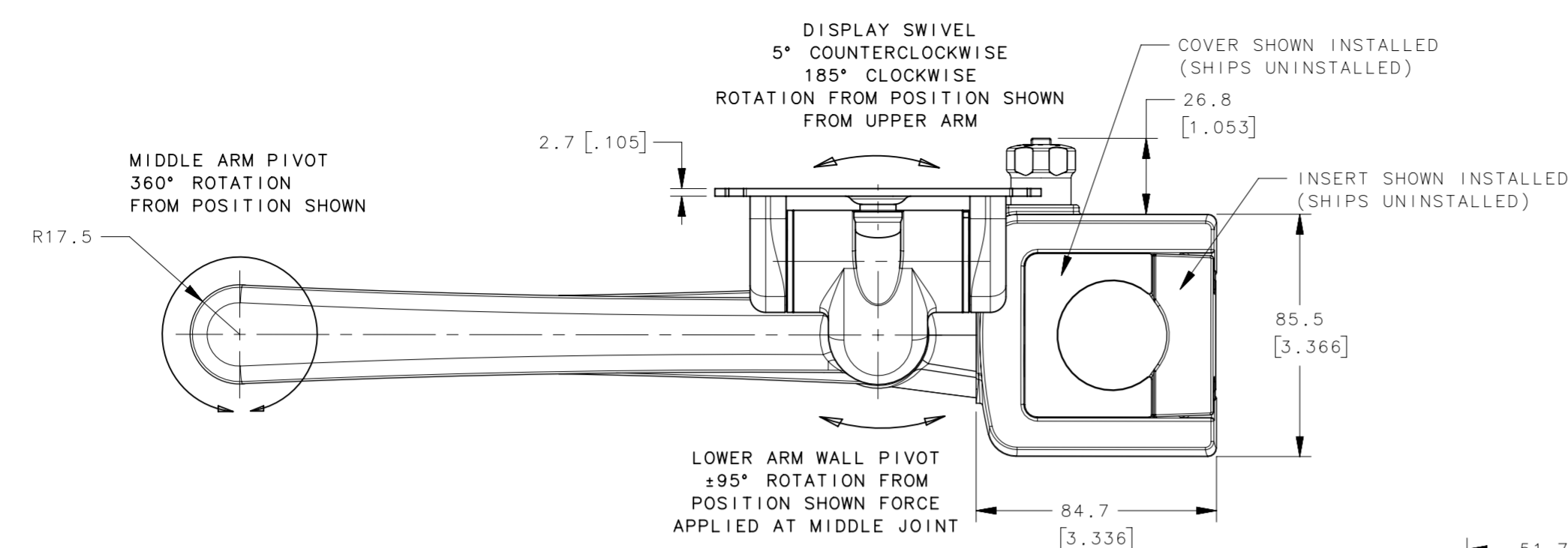
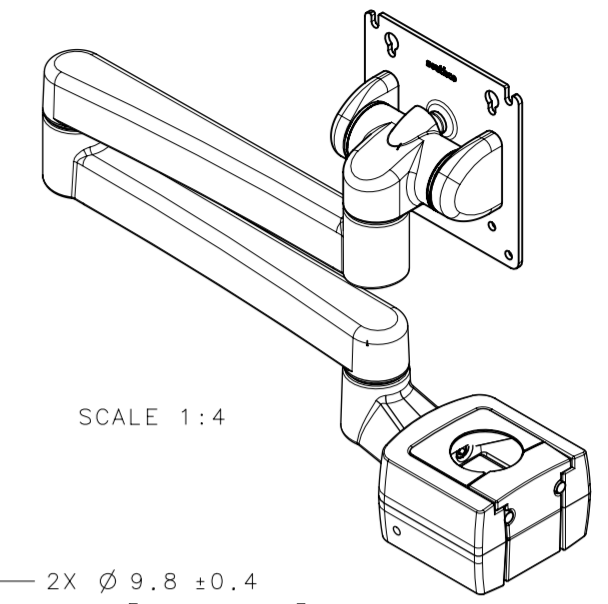
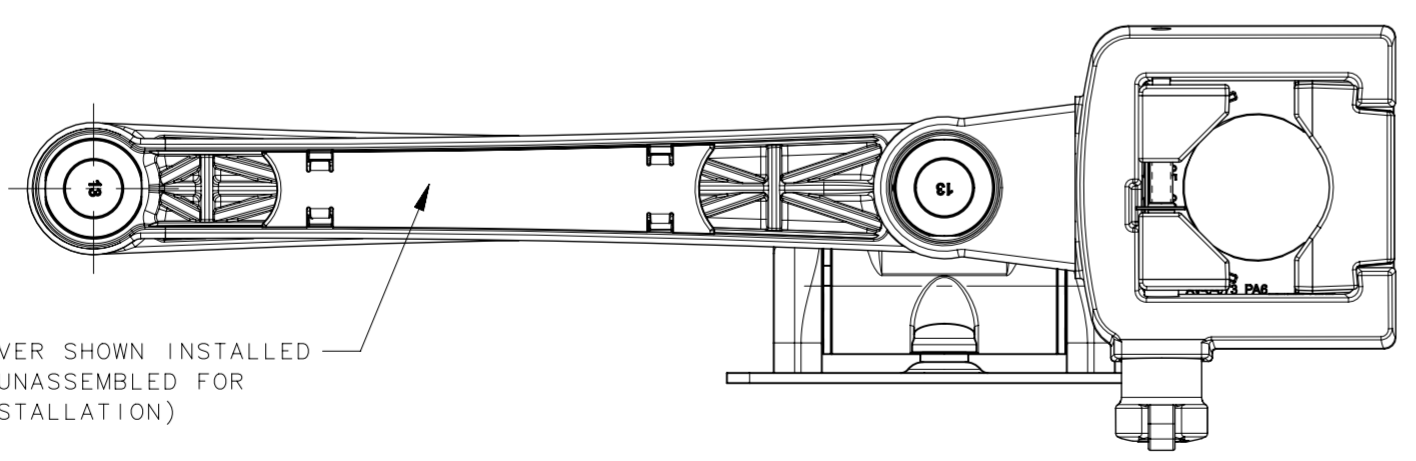


| REVISION HISTORY | | | |
|------------------|-----------|---------|-----------------|
| REV | DATE | BY | DESCRIPTION |
| B | 28MAY2020 | GEA/DMS | PRN: P2020-0960 |



- NOTES:
- FINISH PER SOUTHCO COSMETIC SPECIFICATION: S-121 CLASS C EXTERIOR POWDER COATED SURFACES, PLASTIC PARTS CLASS B EXTERIOR VISIBLE SURFACES.
 - TILT TORQUE MEASURED WITH VESA DISPLAY PLATE IN THE VERTICAL (0°±5°) POSITION WHEN TILTING IN THE REVERSE DIRECTION. THE TILT TORQUE VARIES WITH THE COUNTERBALANCE (WHEN EQUIPPED) IN THE FORWARD AND REVERSE DIRECTIONS.
 - DISPLAY MOUNTING PLATE TO HOUSING ANGULAR FREE PLAY TO BE 1.5° MAXIMUM.
 - SCREWS AFFIXING HOUSING MOUNT TO MOUNTING PLATE ARE NOT TO BE REMOVED. IF REMOVED OR LOOSENED, REPLACE USING NEW M6-1.0x0.25, CLASS 12.9, HIGH TENSILE CAP HEAD SCREWS AND PLAIN WASHERS AND TIGHTEN TO 14-16 Nm.
 - MATERIALS AND FINISHES:
 ADAPTERS: DIE CAST ALUMINUM ANODIZED AND POWDER COATED
 ARMS, TILT HOUSING, SWIVEL HOUSING AND ARM MOUNT PLATE: DIE CAST ALUMINUM, POWDER COATED
 TILT SLEEVE AND THRUST WASHER: ACETAL, BLACK
 COILED PIN: STEEL, PHOSPHATE COATED
 TILT SHAFT, TORQUE ELEMENTS AND STOP WASHER: STEEL, NATURAL FINISH
 TORSION SPRING: CARBON STEEL, NICKEL PLATED
 DISPLAY SCREWS: STEEL, BLACK OXIDE
 DISPLAY STOPS: POLYETHYLENE, WHITE
 SWIVEL SHAFT: STAINLESS STEEL AND NYLON
 WIRE COVER: PC/ABS,
 M6 CAP SCREWS: ALLOY STEEL, BLACK OXIDE
 M6 FLAT WASHERS: STEEL, ZINC PLATED
 LUBRICANT: HYDROCARBON BASE
 POLE MOUNT: DIE CAST ALUMINUM, ANODIZED AND POWDER COATED
 POLE MOUNT INSERT: DIE CAST ALUMINUM, ANODIZED AND POWDER COATED, ROD: EPDM, BLACK
 POLE MOUNT COVER: NYLON, BLACK OR OFFICE WHITE.



WIRE COVER SHOWN INSTALLED (SHIPS UNASSEMBLED FOR USER INSTALLATION)

| PART NUMBER | FORWARD TILT TORQUE N*m (lbf*in) | REVERSE TILT TORQUE N*m (lbf*in) | DISPLAY SWIVEL SYMMETRIC TORQUE N*m (lbf*in) | SYMMETRIC TORQUE TO MOVE LOWER ARM ASSEMBLY N*m (lbf*in) | SYMMETRIC TORQUE TO MOVE UPPER ARM ASSEMBLY N*m (lbf*in) | COLOR |
|------------------|----------------------------------|----------------------------------|--|--|--|--------------|
| AV-D32-46D161-50 | 1.13 (10) | 7.9 (70) | 4.29 (38) NOMINAL / 2.17 (24) MINIMUM | 9.8 (87) NOMINAL / 5.08 (45) MINIMUM | 9.8 (87) NOMINAL / 5.08 (45) MINIMUM | BLACK |
| AV-D32-46D161-76 | | | | | | OFFICE WHITE |
| AV-D32-46D162-50 | 2.26 (20) | 15.4 (136) | 4.29 (38) NOMINAL / 2.17 (24) MINIMUM | 9.8 (87) NOMINAL / 5.08 (45) MINIMUM | 9.8 (87) NOMINAL / 5.08 (45) MINIMUM | BLACK |
| AV-D32-46D162-76 | | | | | | OFFICE WHITE |
| AV-D32-46D163-50 | 6.0 (53) | 8.6 (76) | 4.29 (38) NOMINAL / 2.17 (24) MINIMUM | 9.8 (87) NOMINAL / 5.08 (45) MINIMUM | 9.8 (87) NOMINAL / 5.08 (45) MINIMUM | BLACK |
| AV-D32-46D163-76 | | | | | | OFFICE WHITE |

| | |
|---|---|
| THIRD ANGLE PROJECTION | |
| MASS | |
| SURFACE AREA | TILT & SWIVEL DISPLAY MOUNT DOUBLE ARM POLE MOUNT |
| VOLUME | |
| PROPRIETARY ITEM EXCEPT FOR USES EXPRESSLY GRANTED IN WRITING, INFORMATION DISCLOSED HEREON IS CONFIDENTIAL AND ALL RIGHTS, PATENT AND OTHERWISE, ARE RESERVED BY SOUTHCO, INC. | ALL DIMENSIONS WITHOUT TOLERANCES ARE FOR REFERENCE ONLY. PER ASME Y14.5M-1994 |
| SIZE SYSTEM A2 | DWG NO. J-AV-D32-46D161 DRAWN BY DMS/GEA DATE 30APR2018 SCALE 1:2 SHEET 1 OF 4 |

8

7

6

5

4

3

2

1

| REVISION HISTORY | | | |
|------------------|-----------|---------|-----------------|
| REV | DATE | BY | DESCRIPTION |
| B | 28MAY2020 | GEA/DMS | PRN: P2020-0960 |

DISPLAY SWIVEL
±95°
FROM POSITION
SHOWN

UPPER ARM TO LOWER ARM
360° FROM POSITION
SHOWN

LOWER ARM TO ARM MOUNT
±95°
FROM POSITION SHOWN

82.6
[3.251]

584.3
[23.004]

TILT
+20° REVERSE
-20° FORWARD
FROM POSITION
SHOWN

FORWARD

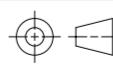
REVERSE

25.7
[1.011]

26
[1.024]

225
[8.858]

225
[8.858]

| | | | | | |
|--|---|---|--|---|-----------------|
| | THIRD ANGLE PROJECTION |  | | southco CONNECT · CREATE · INNOVATE | |
| | MILLIMETERS [IN] | | | | |
| SURFACE AREA | TOLERANCES UNLESS OTHERWISE NOTED | | DESCRIPTION | | |
| VOLUME | ALL DIMENSIONS WITHOUT TOLERANCES ARE FOR REFERENCE ONLY. | | TILT & SWIVEL DISPLAY MOUNT DOUBLE ARM POLE MOUNT | | |
| PROPRIETARY ITEM | PER ASME Y14.5M-1994 | | SIZE | SYSTEM | DWG NO. |
| EXCEPT FOR USES EXPRESSLY GRANTED IN WRITING, INFORMATION DISCLOSED HEREON IS CONFIDENTIAL AND ALL RIGHTS, PATENT AND OTHERWISE, ARE RESERVED BY SOUTHCO, INC. | | | A2 | NX | J-AV-D32-46D161 |
| | | | DRAWN BY | DATE | SCALE SHEET |
| | | | DMS/GEA | 30APR2018 | 0.75:1 2 OF 4 |

8

7

6

5

4

3

2

1

8

7

6

5

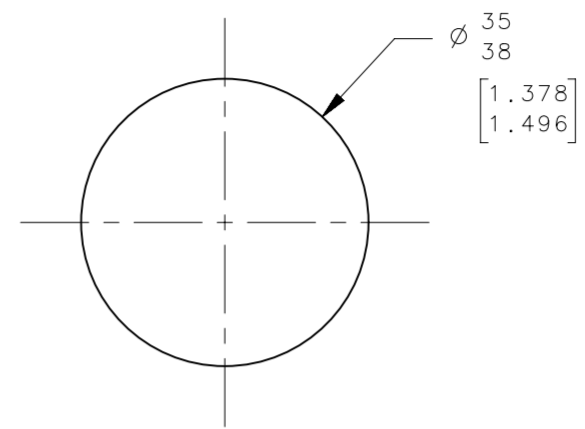
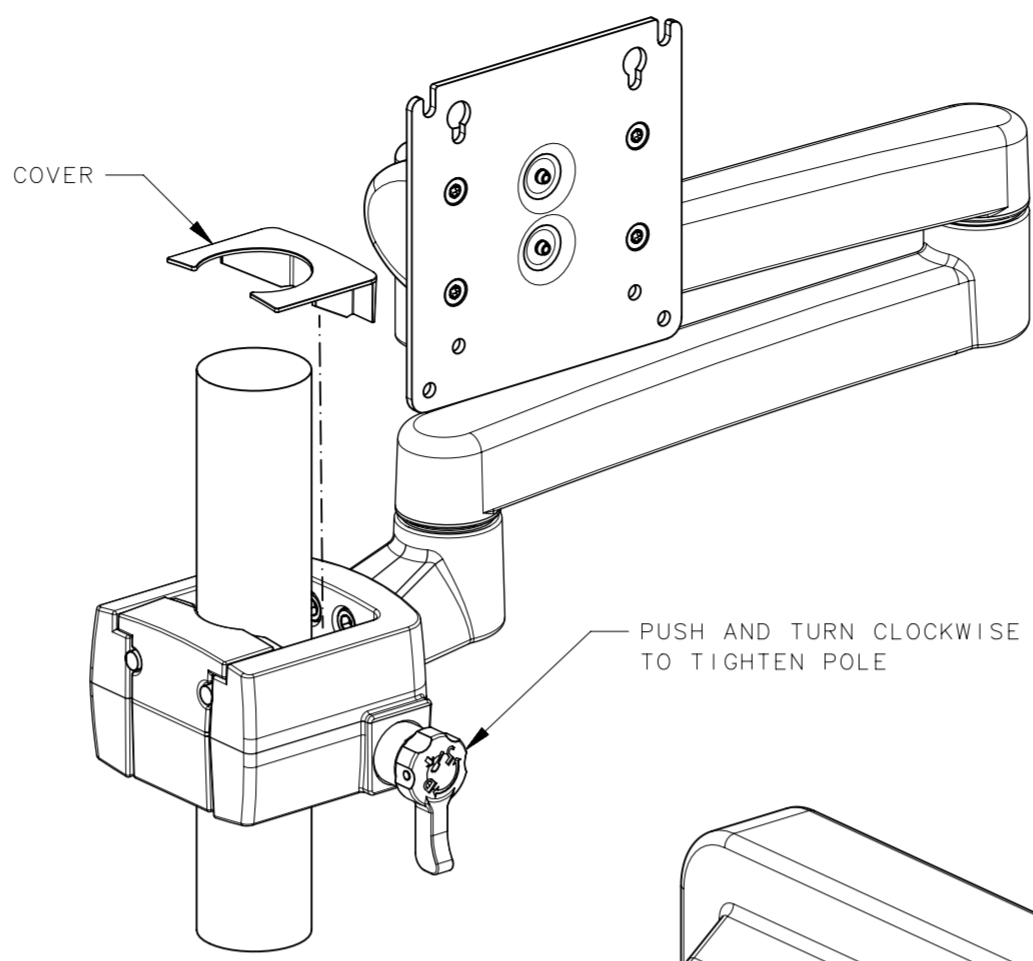
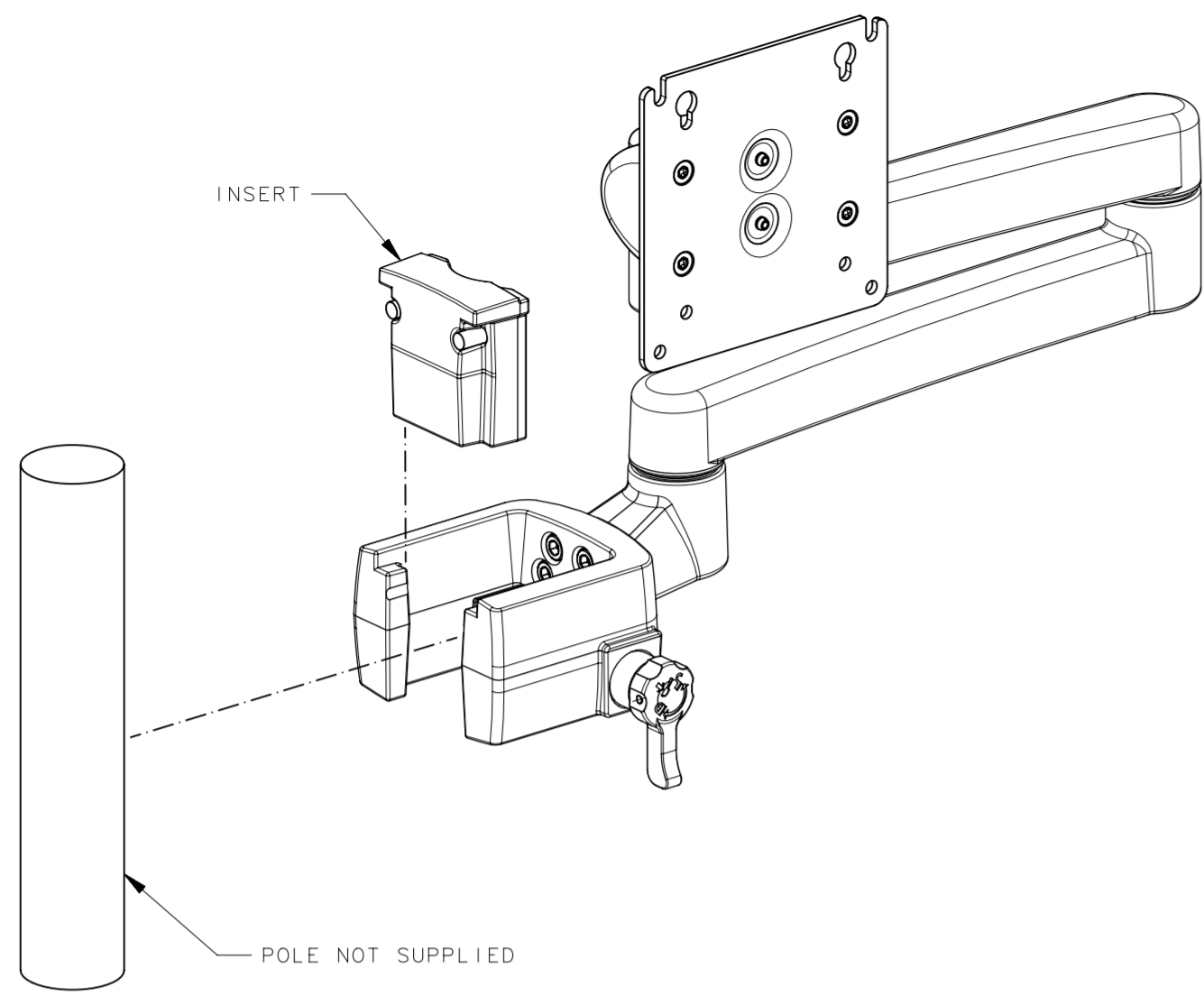
4

3

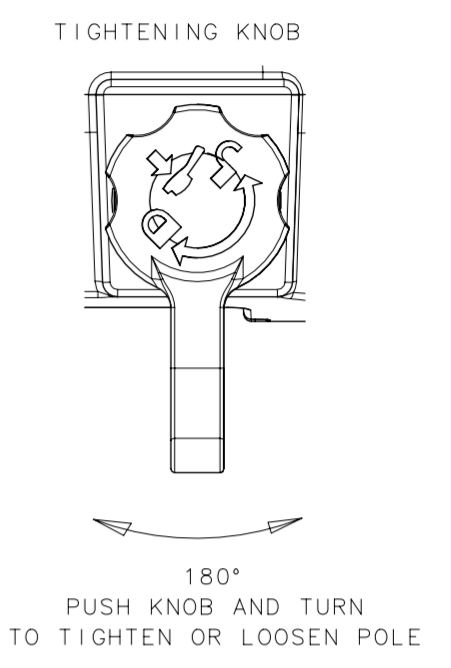
2

1

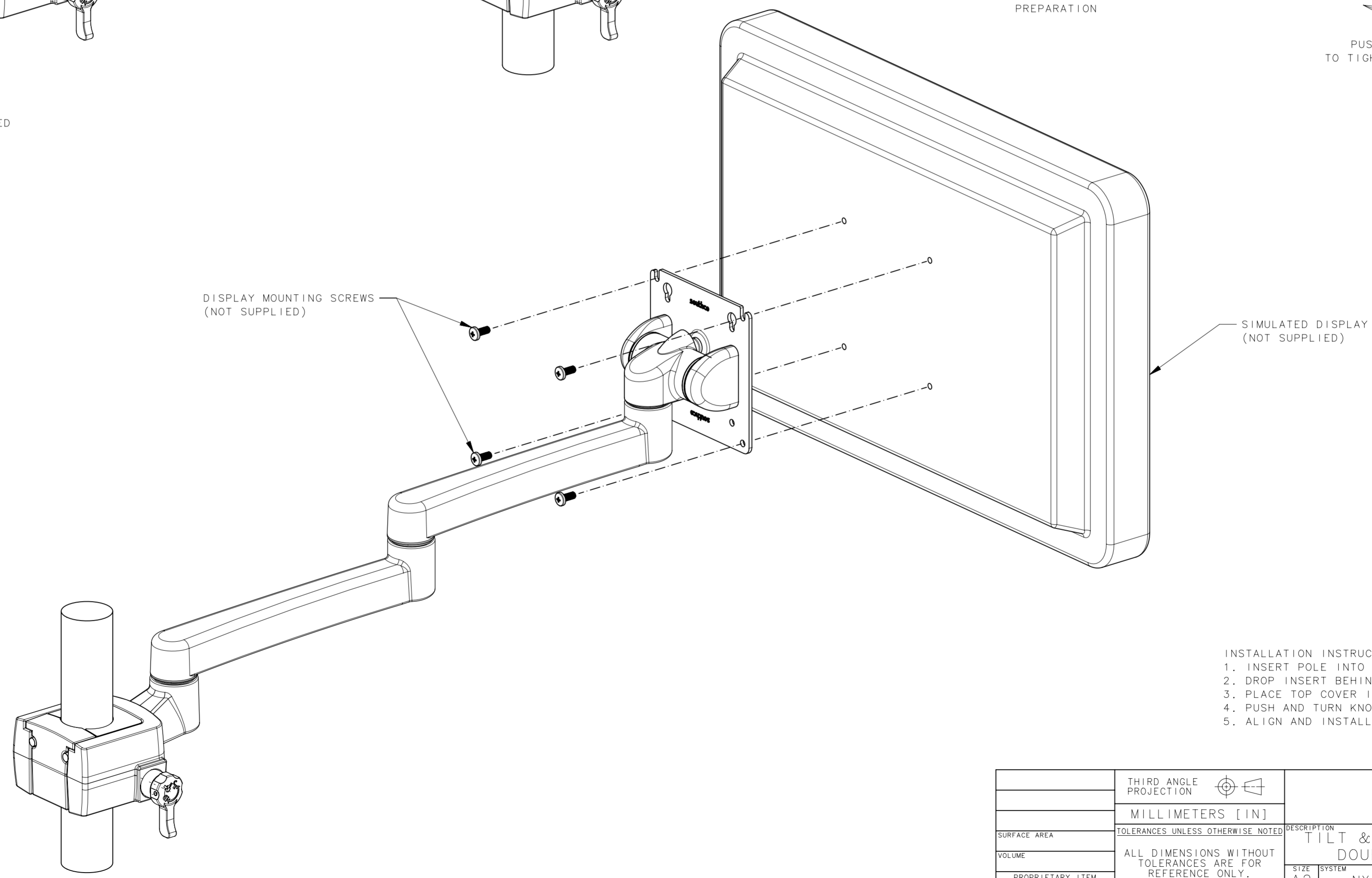
| REVISION HISTORY | | | |
|------------------|-----------|---------|-----------------|
| REV | DATE | BY | DESCRIPTION |
| B | 28MAY2020 | GEA/DMS | PRN: P2020-0960 |



SCALE 1:1
MOUNTING POLE
PREPARATION



DISPLAY MOUNTING SCREWS
(NOT SUPPLIED)



- INSTALLATION INSTRUCTIONS:
1. INSERT POLE INTO MOUNT.
 2. DROP INSERT BEHIND POLE TO LOCK POLE IN MOUNT.
 3. PLACE TOP COVER INTO POSITION ON TOP OF MOUNT.
 4. PUSH AND TURN KNOB TO LOCK/UNLOCK.
 5. ALIGN AND INSTALL SCREWS WITH DISPLAY.

| | | | |
|--|--|---|----------------------------|
| THIRD ANGLE PROJECTION | | southco CONNECT · CREATE · INNOVATE | |
| MILLIMETERS [IN] | | DESCRIPTION TILT & SWIVEL DISPLAY MOUNT DOUBLE ARM POLE MOUNT | |
| TOLERANCES UNLESS OTHERWISE NOTED | | SIZE SYSTEM A2 NX | DWG NO. J-AV-D32-46D161 |
| ALL DIMENSIONS WITHOUT TOLERANCES ARE FOR REFERENCE ONLY. | | DRAWN BY DMS/GEA | DATE 30APR2018 |
| PROPRIETARY ITEM EXCEPT FOR USES EXPRESSLY GRANTED IN WRITING, INFORMATION DISCLOSED HEREON IS CONFIDENTIAL AND ALL RIGHTS, PATENT AND OTHERWISE, ARE RESERVED BY SOUTHCO, INC. | | PER ASME Y14.5M-1994 | SCALE 0.4:1 |
| | | SHEET | 3 OF 4 |

8

7

6

5

4

3

2

1

8

7

6

5

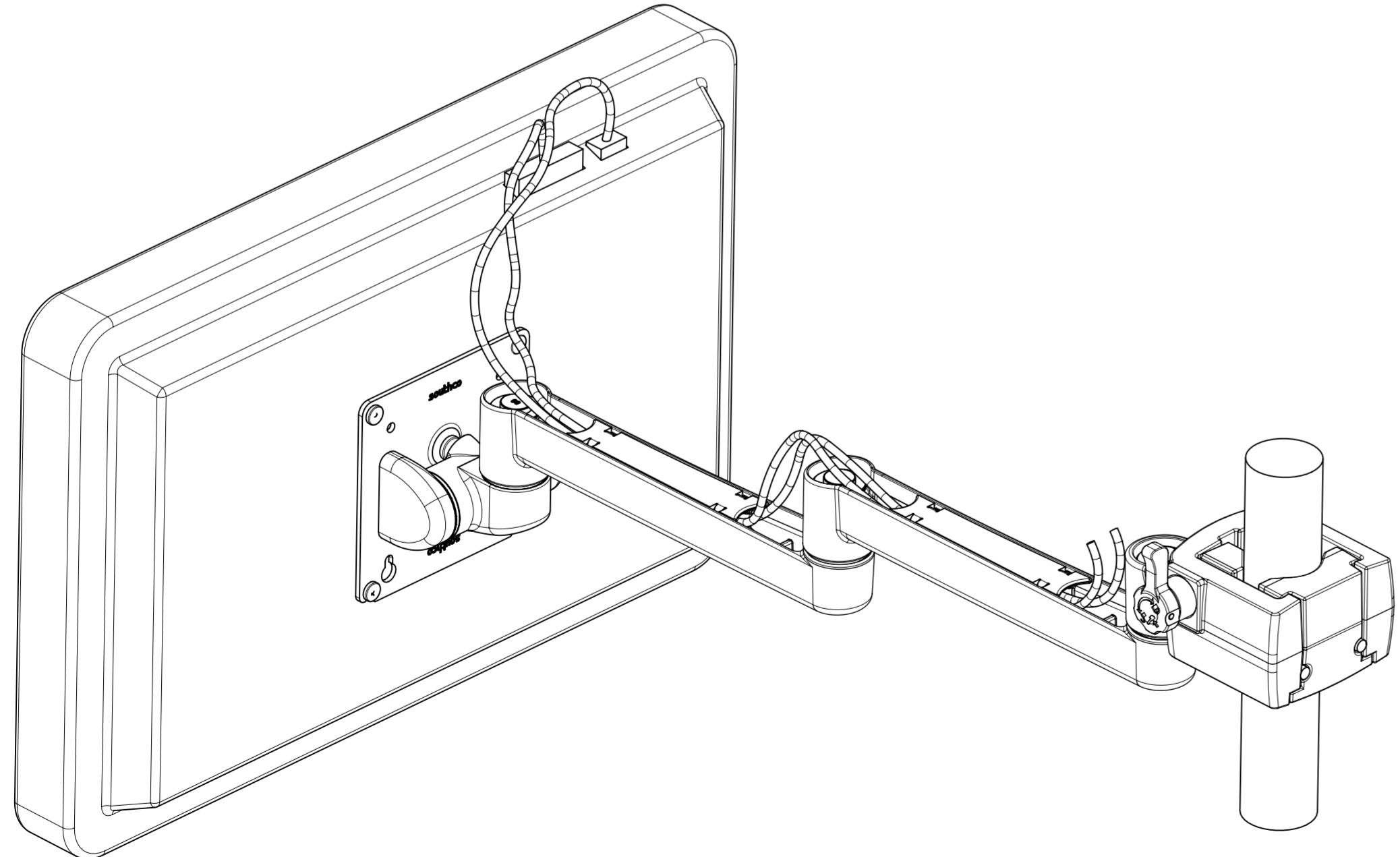
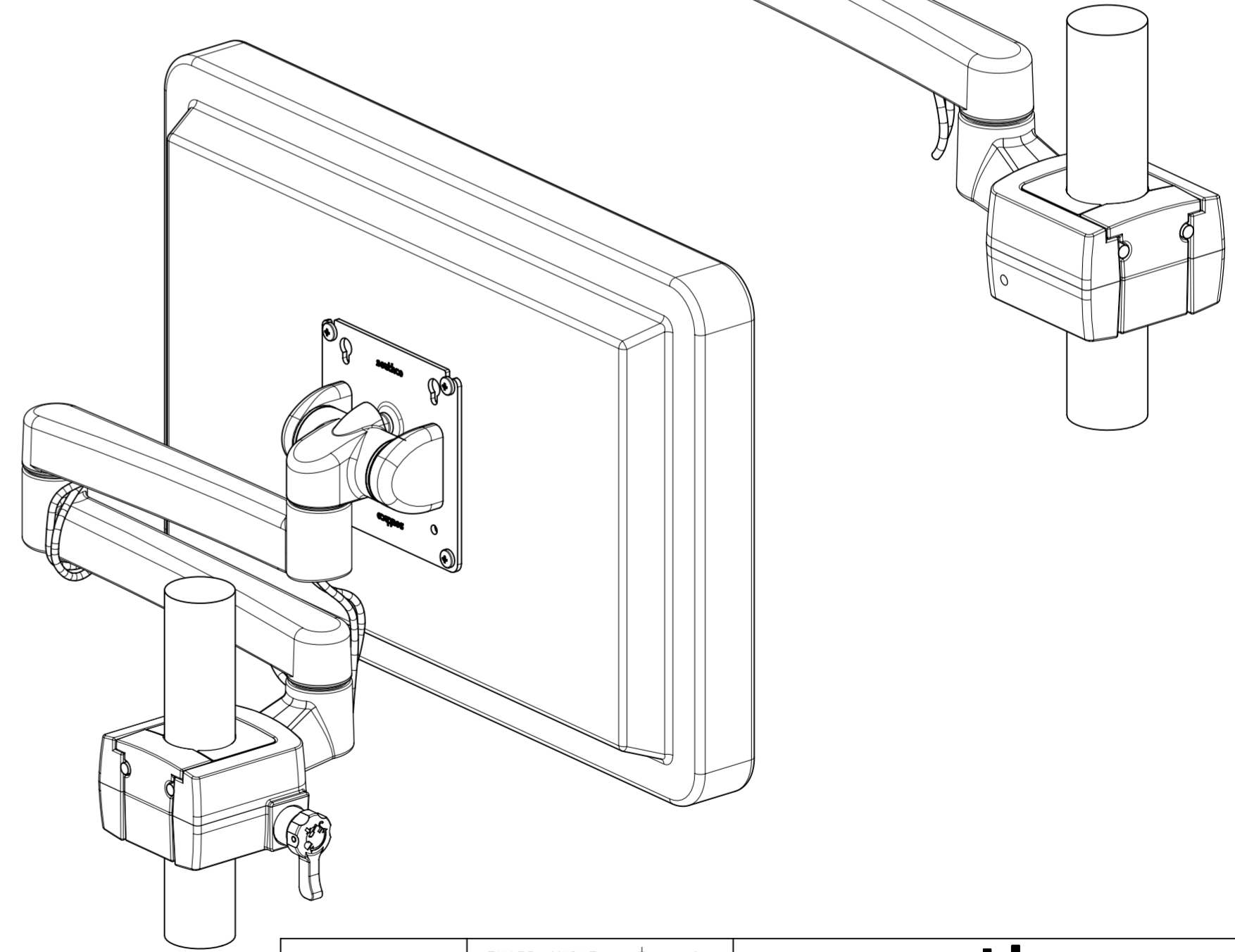
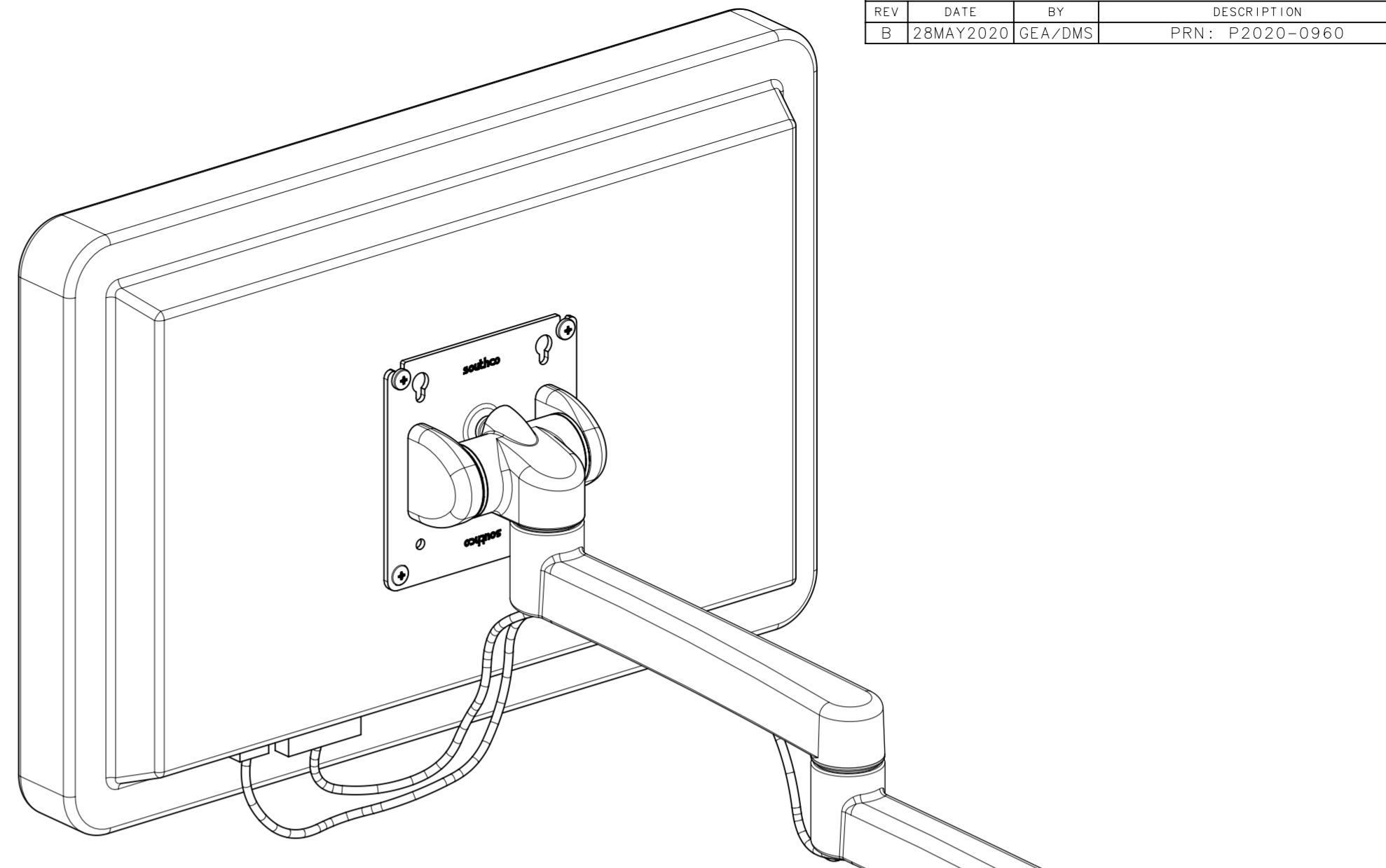
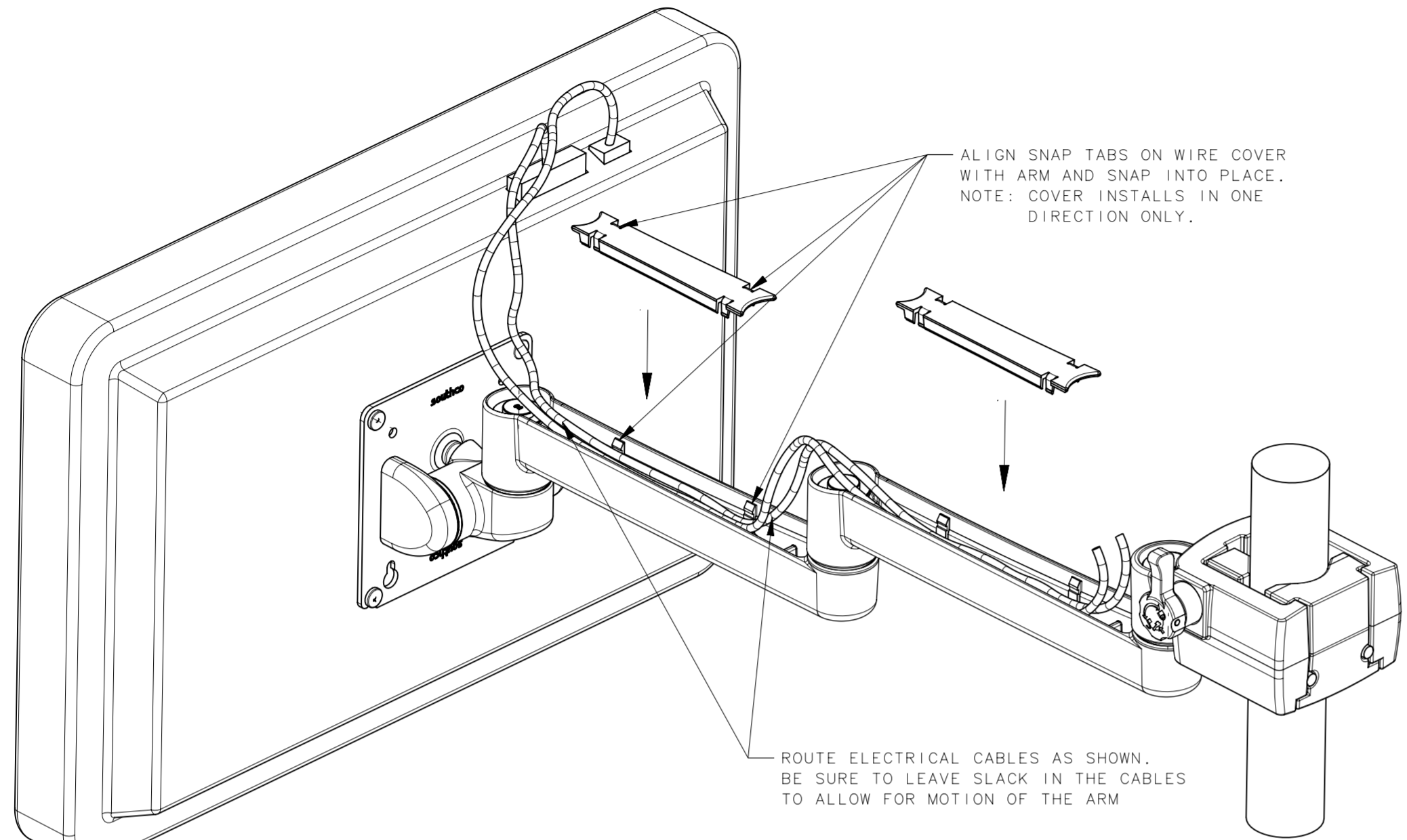
4

3

2

1

| REVISION HISTORY | | | |
|------------------|-----------|---------|-----------------|
| REV | DATE | BY | DESCRIPTION |
| B | 28MAY2020 | GEA/DMS | PRN: P2020-0960 |



| | | | |
|--|--|--|----------------------------|
| THIRD ANGLE PROJECTION | | | |
| MILLIMETERS [IN] | | | |
| SURFACE AREA | | TOLERANCES UNLESS OTHERWISE NOTED | |
| VOLUME | | ALL DIMENSIONS WITHOUT TOLERANCES ARE FOR REFERENCE ONLY. | |
| PROPRIETARY ITEM | | southco® CONNECT · CREATE · INNOVATE | |
| EXCEPT FOR USES EXPRESSLY GRANTED IN WRITING, INFORMATION DISCLOSED HEREON IS CONFIDENTIAL AND ALL RIGHTS, PATENT AND OTHERWISE, ARE RESERVED BY SOUTHCO, INC. | | DESCRIPTION TILT & SWIVEL DISPLAY MOUNT DOUBLE ARM POLE MOUNT | |
| PER ASME Y14.5M-1994 | | SIZE SYSTEM A2 NX | DWG NO. J-AV-D32-46D161 |
| | | DRAWN BY DMS/GEA | DATE 30APR2018 |
| | | SCALE 1:1 | SHEET 4 OF 4 |

8

7

6

5

4

3

2

1