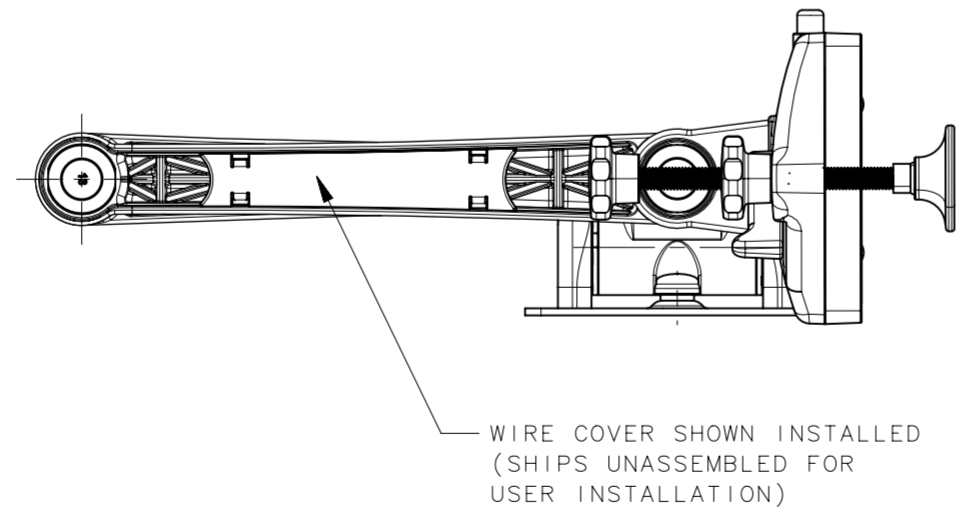
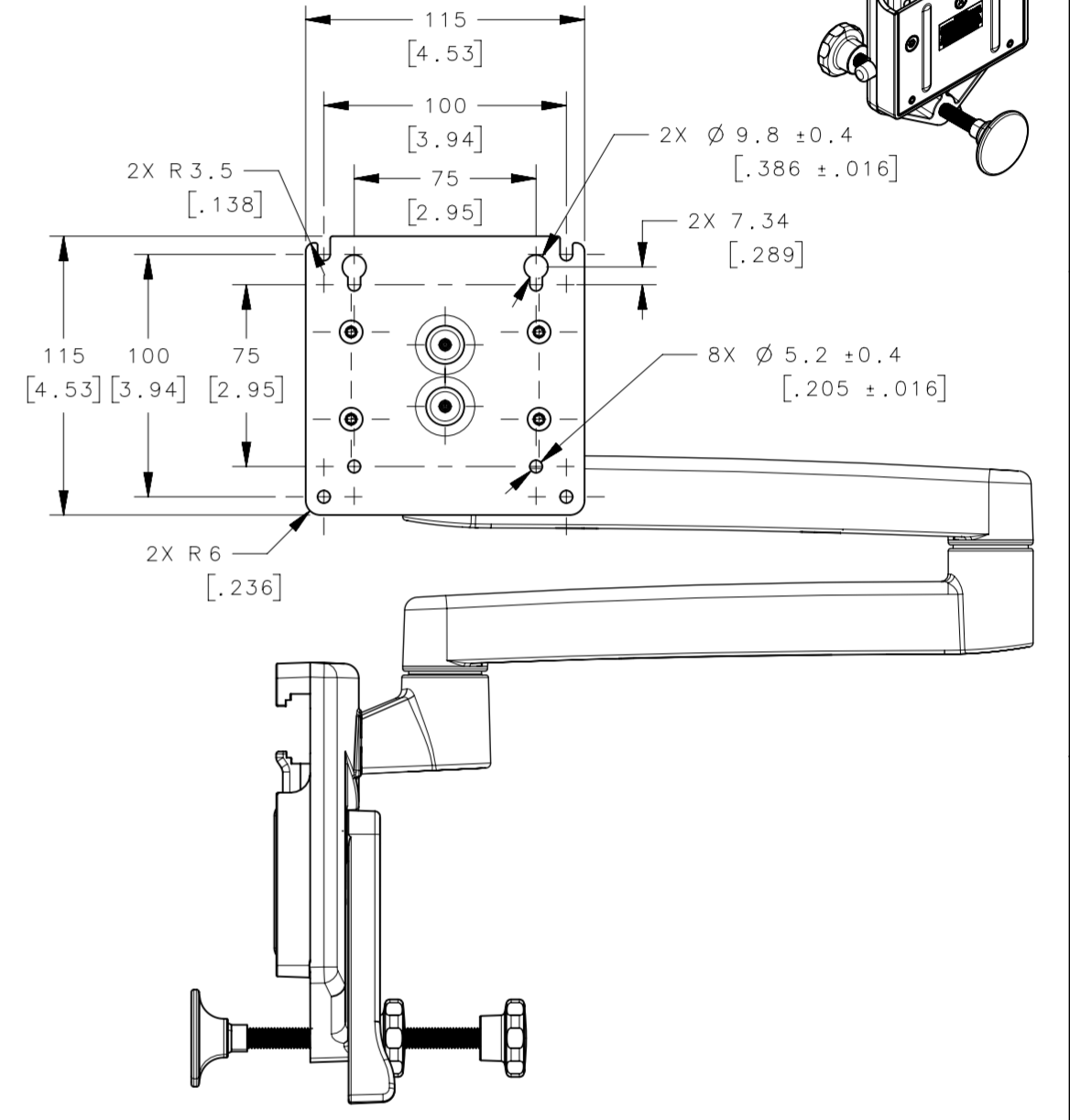
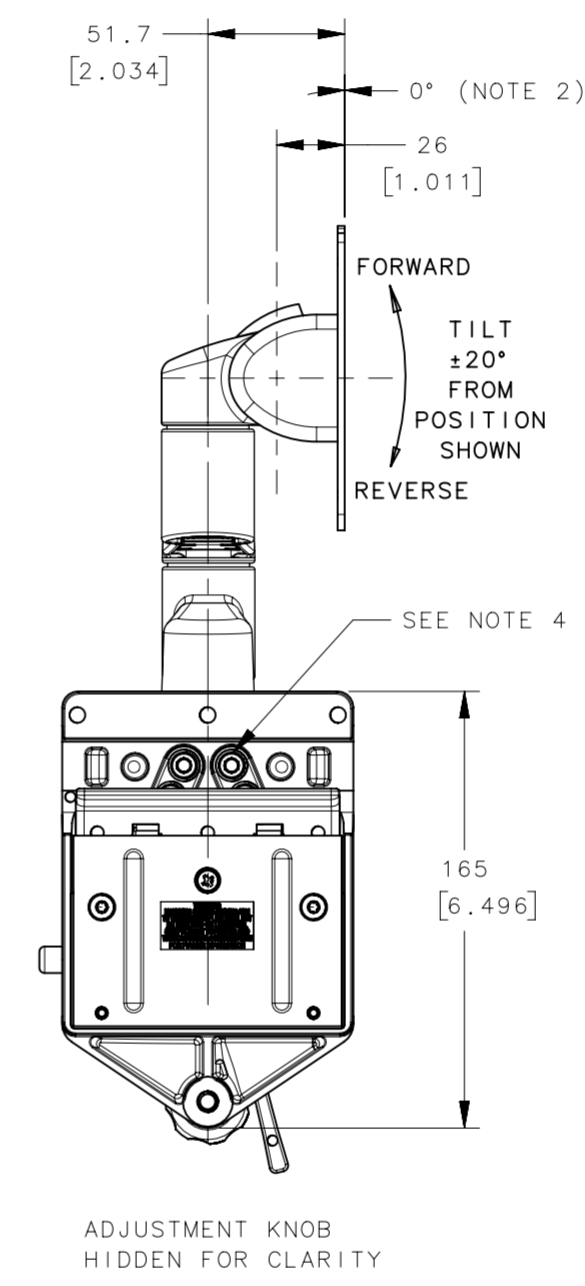
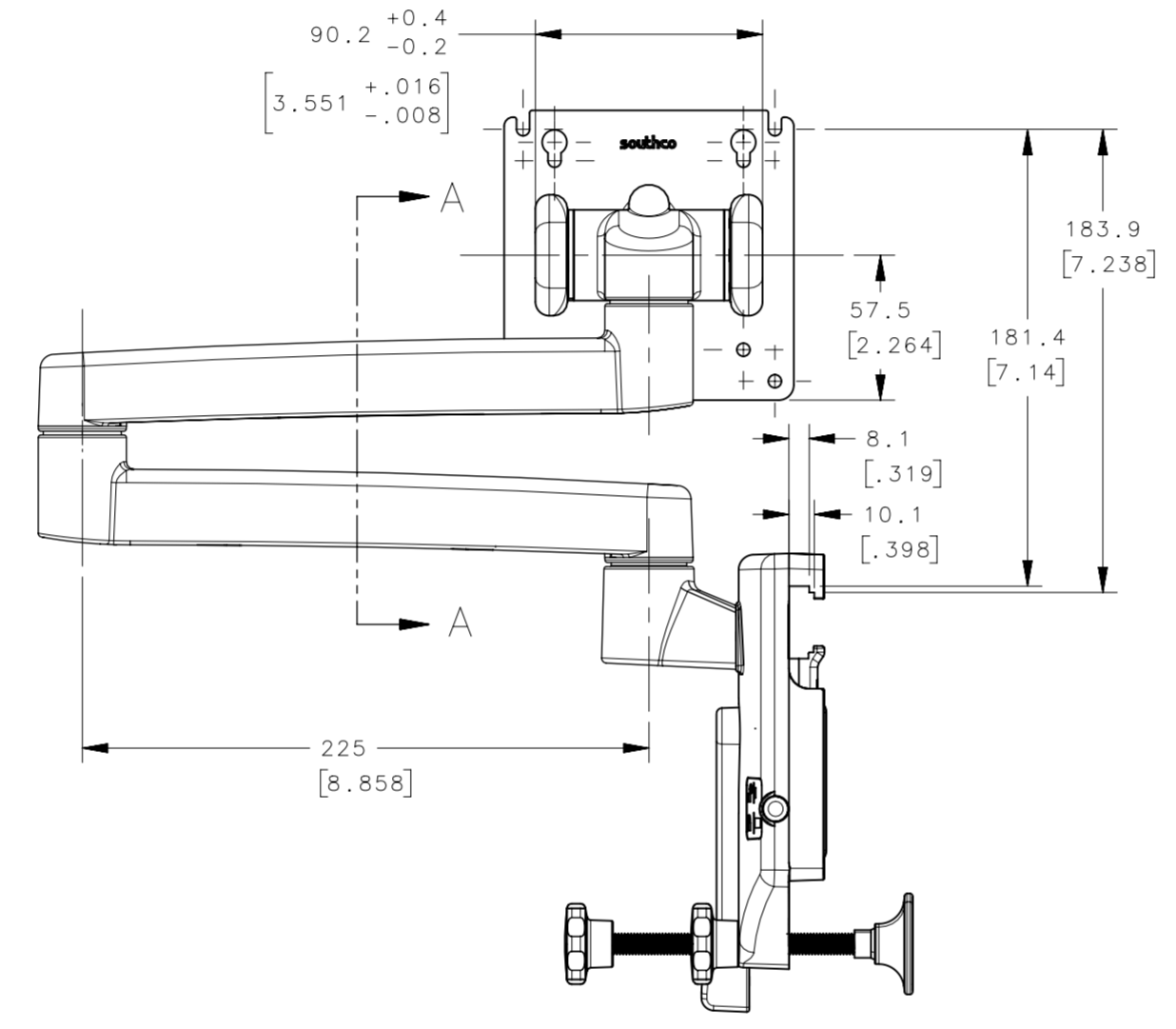
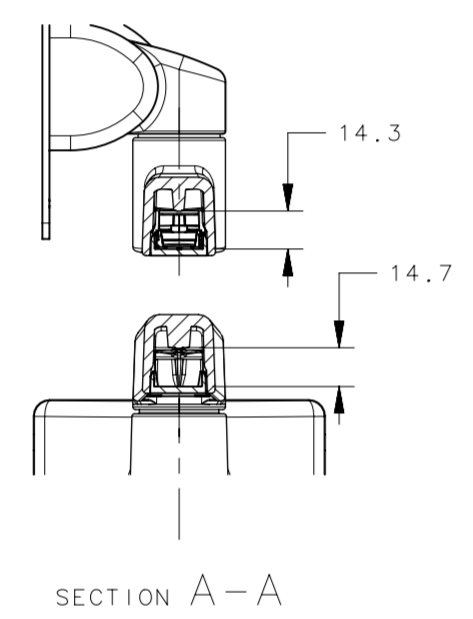
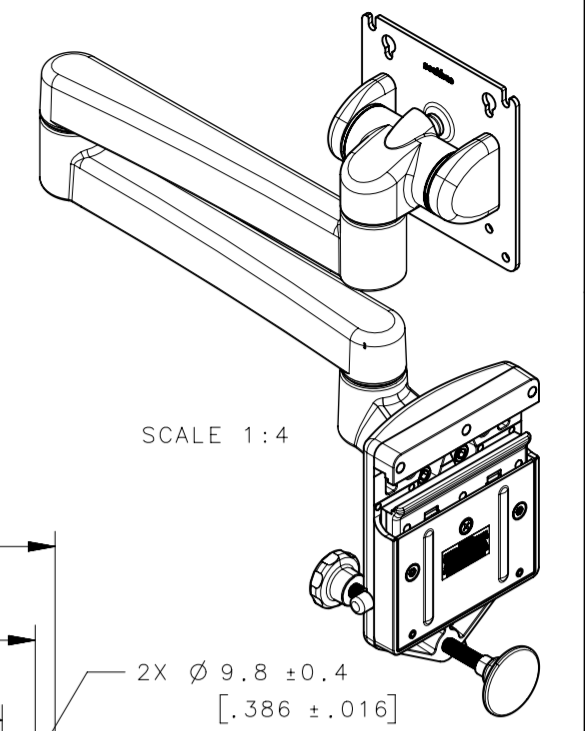


REVISION HISTORY			
REV	DATE	BY	DESCRIPTION
B	28MAY2020	GEA/DMS	PRN: P2020-0960

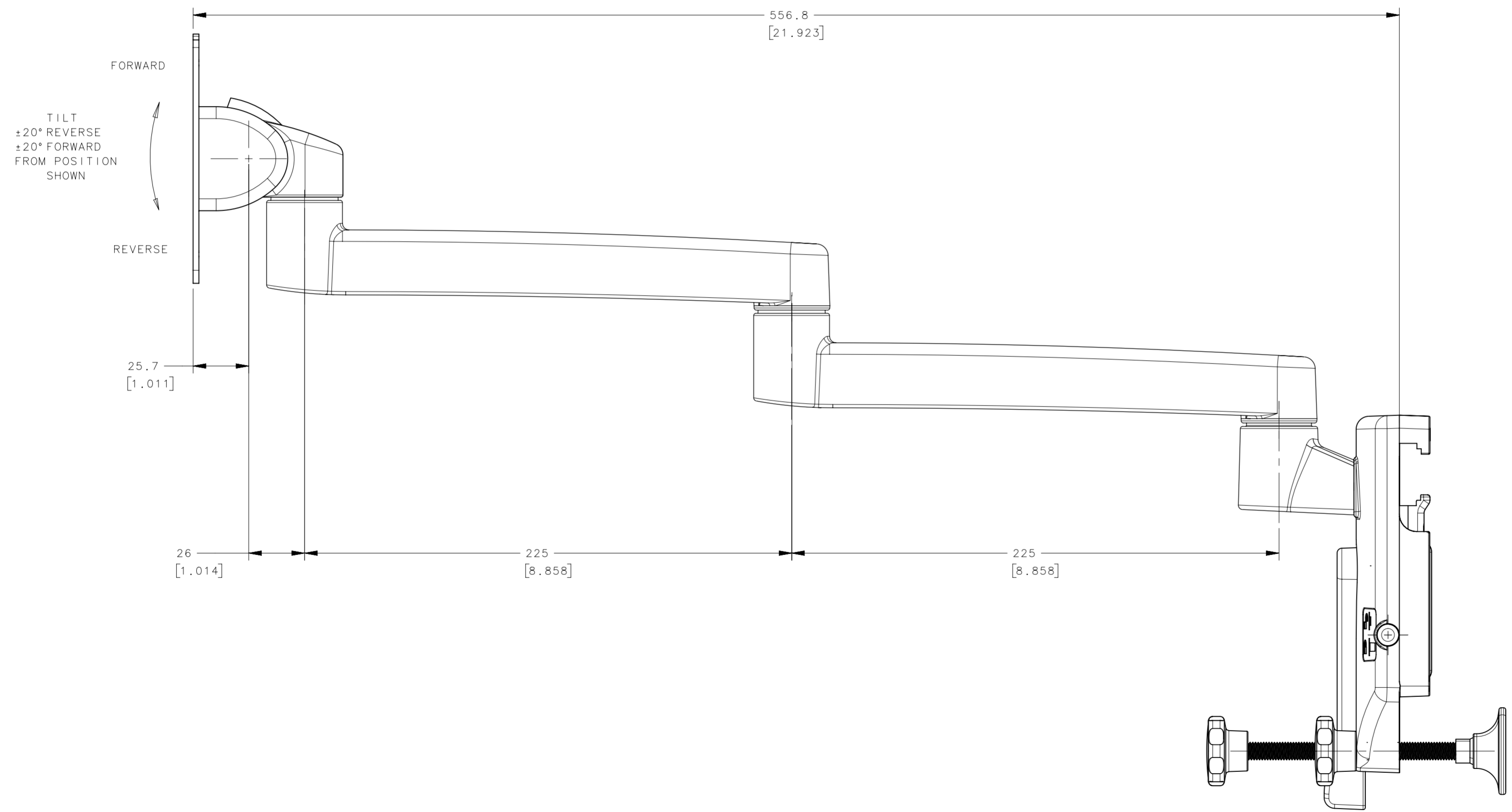
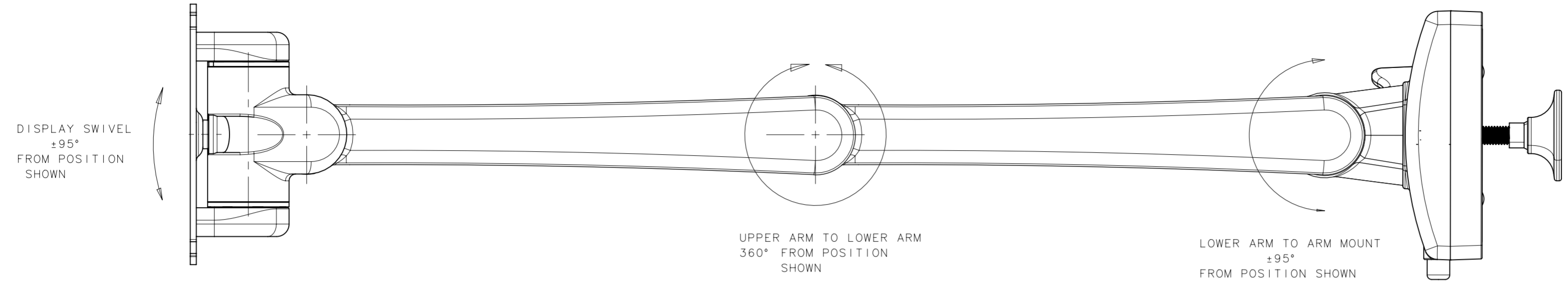


- NOTES:
- FINISH PER SOUTHCO COSMETIC SPECIFICATION: S-121 CLASS C EXTERIOR POWDER COATED SURFACES, PLASTIC PARTS CLASS B EXTERIOR VISIBLE SURFACES.
 - TILT TORQUE MEASURED WITH VESA DISPLAY PLATE IN THE VERTICAL (0° ±5°) POSITION WHEN TILTING IN THE REVERSE DIRECTION. THE TILT TORQUE VARIES WITH THE COUNTERBALANCE (WHEN EQUIPPED) IN THE FORWARD AND REVERSE DIRECTIONS.
 - DISPLAY MOUNTING PLATE TO HOUSING ANGULAR FREE PLAY TO BE 1.5° MAXIMUM.
 - SCREWS AFFIXING HOUSING MOUNT TO MOUNTING PLATE ARE NOT TO BE REMOVED.
IF REMOVED OR LOOSENED, REPLACE USING NEW M6-1.0x0.25, CLASS 12.9, HIGH TENSILE CAP HEAD SCREWS AND PLAIN WASHERS AND TIGHTEN TO 14-16 Nm.
 - MATERIALS AND FINISHES:
ADAPTERS: DIE CAST ALUMINUM ANODIZED AND POWDER COATED
ARMS, TILT HOUSING, SWIVEL HOUSING AND ARM MOUNT PLATE: DIE CAST ALUMINUM, POWDER COATED
TILT SLEEVE AND THRUST WASHER: ACETAL, BLACK
COILED PIN: STEEL, PHOSPHATE COATED
TILT SHAFT, TORQUE ELEMENTS AND STOP WASHER: STEEL, NATURAL FINISH
TORSION SPRING: CARBON STEEL, NICKEL PLATED
DISPLAY SCREWS: STEEL, BLACK OXIDE
DISPLAY STOPS: POLYETHYLENE, WHITE
SWIVEL SHAFT: STAINLESS STEEL AND NYLON
WIRE COVER: PC/ABS.
M6 CAP SCREWS: ALLOY STEEL, BLACK OXIDE
M6 FLAT WASHERS: STEEL, ZINC PLATED
LUBRICANT: HYDROCARBON BASE
DIN RAIL MOUNT: DIE CAST ALUMINUM, CHROMATE COATED AND POWDER COATED.

PART NUMBER	FORWARD TILT TORQUE N*m (lbf*in)	REVERSE TILT TORQUE N*m (lbf*in)	DISPLAY SWIVEL SYMMETRIC TORQUE N*m (lbf*in)	SYMMETRIC TORQUE TO MOVE LOWER ARM ASSEMBLY N*m (lbf*in)	SYMMETRIC TORQUE TO MOVE UPPER ARM ASSEMBLY N*m (lbf*in)	COLOR
AV-D32-46D171-50	1.13 (10)	7.9 (70)	4.29 (38) NOMINAL / 2.17 (24) MINIMUM	9.8 (87) NOMINAL / 5.08 (45) MINIMUM	9.8 (87) NOMINAL / 5.08 (45) MINIMUM	BLACK
AV-D32-46D171-76						OFFICE WHITE
AV-D32-46D172-50	2.26 (20)	15.4 (136)				BLACK
AV-D32-46D172-76						OFFICE WHITE
AV-D32-46D173-50	6.0 (53)	8.6 (76)				BLACK
AV-D32-46D173-76						OFFICE WHITE

THIRD ANGLE PROJECTION	
MILLIMETERS [IN]	
SURFACE AREA	TILT & SWIVEL DISPLAY MOUNT DOUBLE ARM DIN RAIL MOUNT
VOLUME	
PROPRIETARY ITEM	SIZE SYSTEM: A2 NX DWG NO.: J-AV-D32-46D171 DRAWN BY: CBI/DMS DATE: 30APR2018 SCALE: 0.35:1 SHEET: 1 OF 4
TOLERANCES UNLESS OTHERWISE NOTED ALL DIMENSIONS WITHOUT TOLERANCES ARE FOR REFERENCE ONLY. PER ASME Y14.5M-1994	

REVISION HISTORY			
REV	DATE	BY	DESCRIPTION
B	28MAY2020	GEA/DMS	PRN: P2020-0960



	THIRD ANGLE PROJECTION	 CONNECT · CREATE · INNOVATE	
	MILLIMETERS [IN]		
SURFACE AREA	TOLERANCES UNLESS OTHERWISE NOTED	DESCRIPTION TILT & SWIVEL DISPLAY MOUNT DOUBLE ARM DIN RAIL MOUNT	
VOLUME	ALL DIMENSIONS WITHOUT TOLERANCES ARE FOR REFERENCE ONLY.	SIZE SYSTEM A2 NX	DWG NO. J-AV-D32-46D171
PROPRIETARY ITEM EXCEPT FOR USES EXPRESSLY GRANTED IN WRITING, INFORMATION DISCLOSED HEREON IS CONFIDENTIAL AND ALL RIGHTS, PATENT AND OTHERWISE, ARE RESERVED BY SOUTHCO, INC.	PER ASME Y14.5M-1994	DRAWN BY CBI/DMS	DATE 30APR2018
		SCALE 0.6:1	SHEET 2 OF 4

8

7

6

5

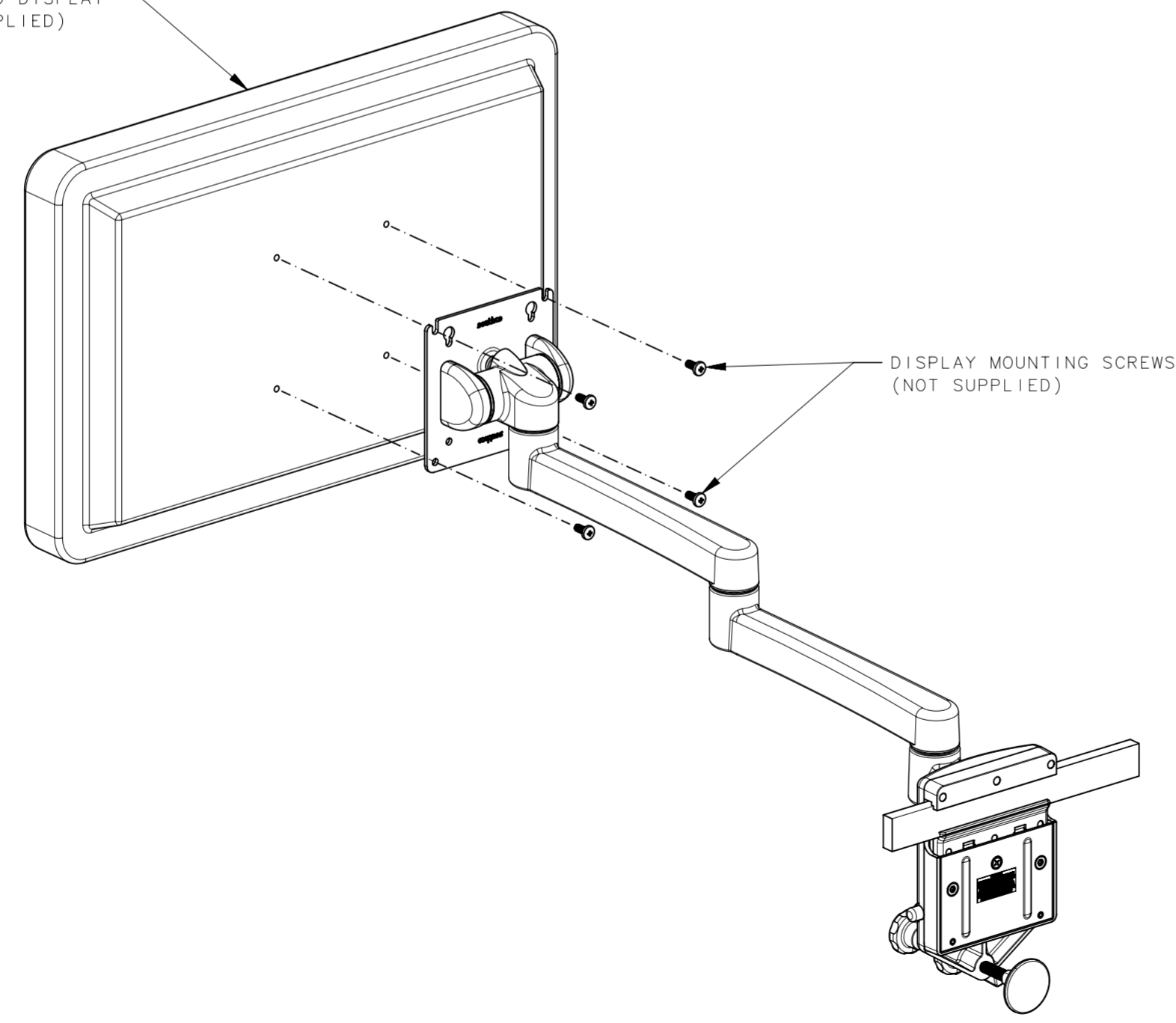
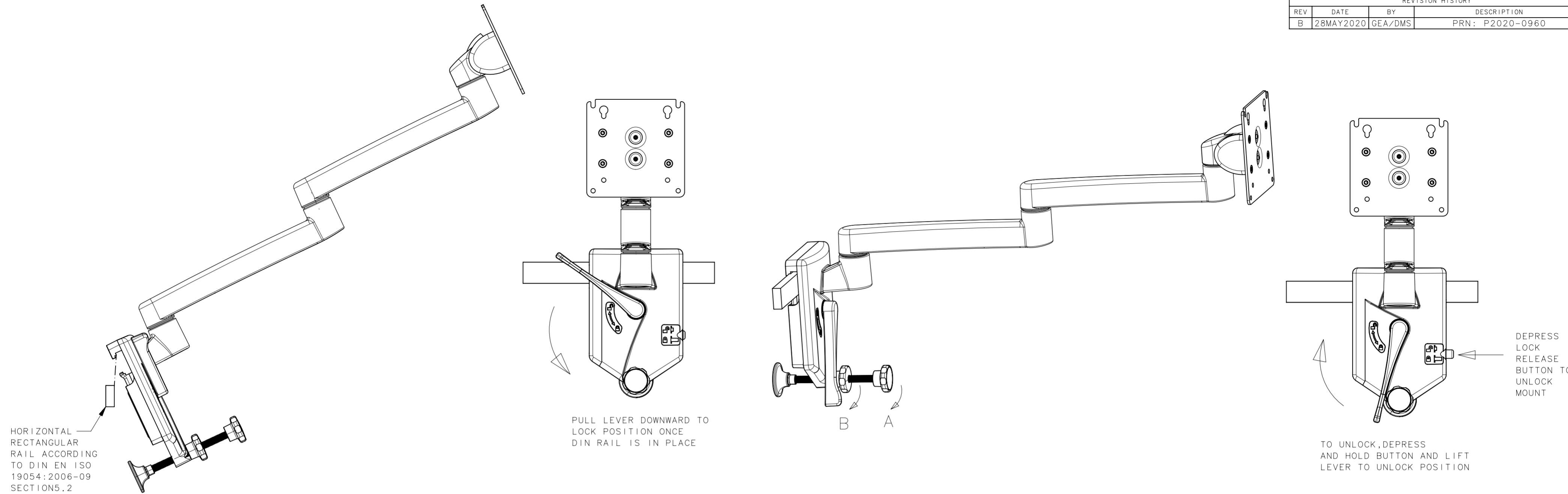
4

3

2

1

REVISION HISTORY			
REV	DATE	BY	DESCRIPTION
B	28MAY2020	GEA/DMS	PRN: P2020-0960



INSTALLATION INSTRUCTIONS:
 INSERT TOP OF DIN RAIL MOUNT CLAMP INTO DIN RAIL AT AN ANGLE AND LOWER THE CLAMP AROUND THE BOTTOM OF THE RAIL. ONCE MOUNT IS IN PLACE, TURN LOCKING LEVER DOWN TO LOCK POSITION. WHILE STILL SUPPORTING THE ARM AT A LEVEL HEIGHT, TURN ADJUSTMENT SCREW 'A' IN DIRECTION SHOWN UNTIL CONTACT WITH WALL IS OBTAINED AND ARM ASSEMBLY IS LEVEL. DO NOT OVERTIGHTEN. TIGHTEN LOCKNUT 'B' TO SECURE. TO UNLOCK AND DISMOUNT FROM DIN RAIL, PRESS AND HOLD BUTTON IN. TURN LEVER BACK TO UNLOCK POSITION.

NOTES:
 DIN RAIL DIMENSION TO BE 8±0.1 X 30±0.2 OR 10±0.1 X 25±0.2. MADE TO SPECIFICATION DIN EN ISO 19054:2006-09 SECTION 5.2

CAUTION:
 BECAUSE OF THE WIDE VARIETY OF AVAILABLE WALL MATERIALS AND MOUNTING HARDWARE, IT IS THE INSTALLER'S RESPONSIBILITY TO ENSURE THAT THE MATERIALS AND STRUCTURE TO WHICH THE ARM IS MOUNTED, AND THE MOUNTING HARDWARE SELECTED WILL PROVIDE ADEQUATE SUPPORT FOR PROPER FUNCTIONING AND WEIGHT BEARING LOAD. SOUTHCO ASSUMES NO LIABILITY FOR THE SELECTION OF WALL MATERIALS, STRUCTURE OR MOUNTING HARDWARE.

	THIRD ANGLE PROJECTION	southco CONNECT · CREATE · INNOVATE	
	MILLIMETERS [IN]		
SURFACE AREA	TOLERANCES UNLESS OTHERWISE NOTED	DESCRIPTION TILT & SWIVEL DISPLAY MOUNT DOUBLE ARM DIN RAIL MOUNT	
VOLUME	ALL DIMENSIONS WITHOUT TOLERANCES ARE FOR REFERENCE ONLY.	SIZE SYSTEM A2 NX	DWG NO. J-AV-D32-46D171
PROPRIETARY ITEM EXCEPT FOR USES EXPRESSLY GRANTED IN WRITING, INFORMATION DISCLOSED HEREON IS CONFIDENTIAL AND ALL RIGHTS, PATENT AND OTHERWISE, ARE RESERVED BY SOUTHCO, INC.	PER ASME Y14.5M-1994	DRAWN BY CBI/DMS	DATE 30APR2018
		SCALE 0.4:1	SHEET 3 OF 4

8

7

6

5

4

3

2

1

8

7

6

5

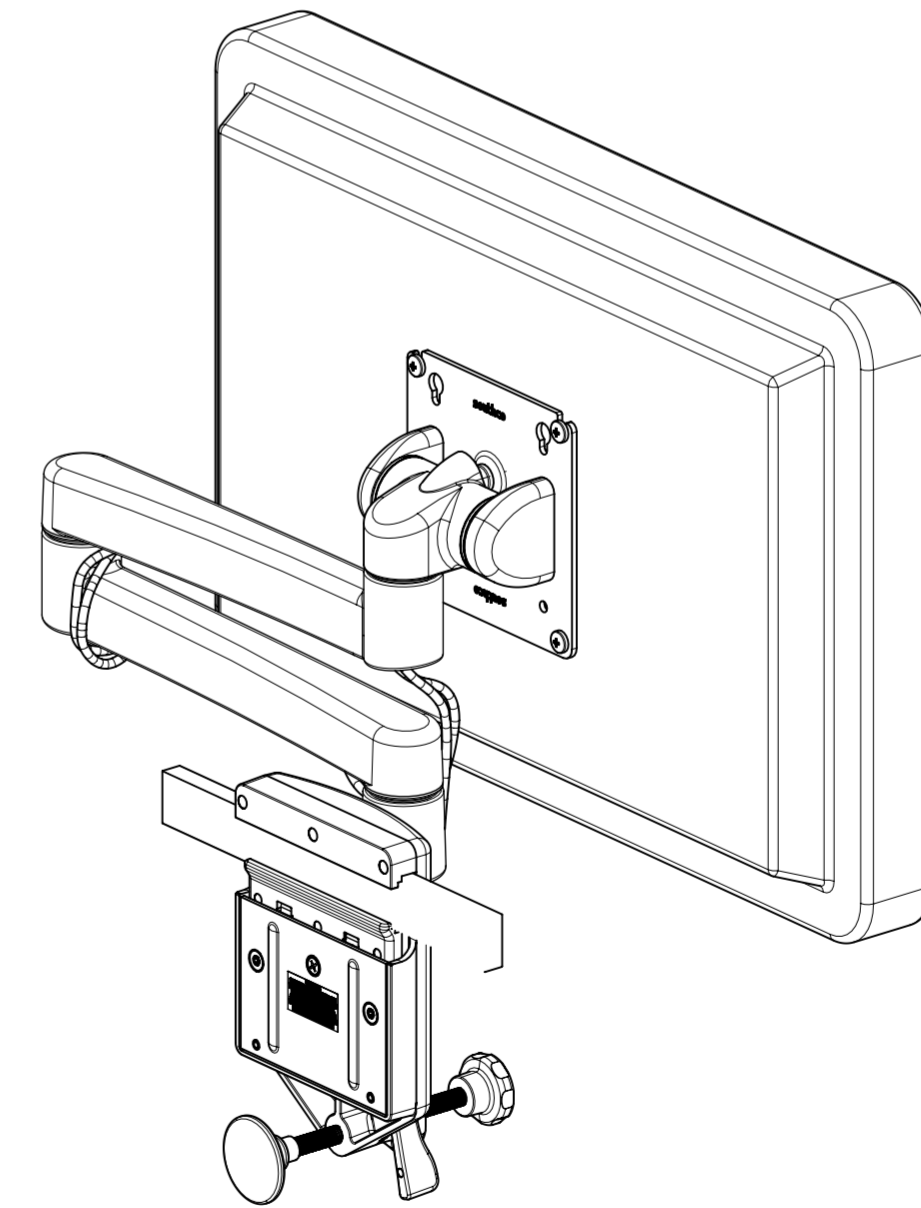
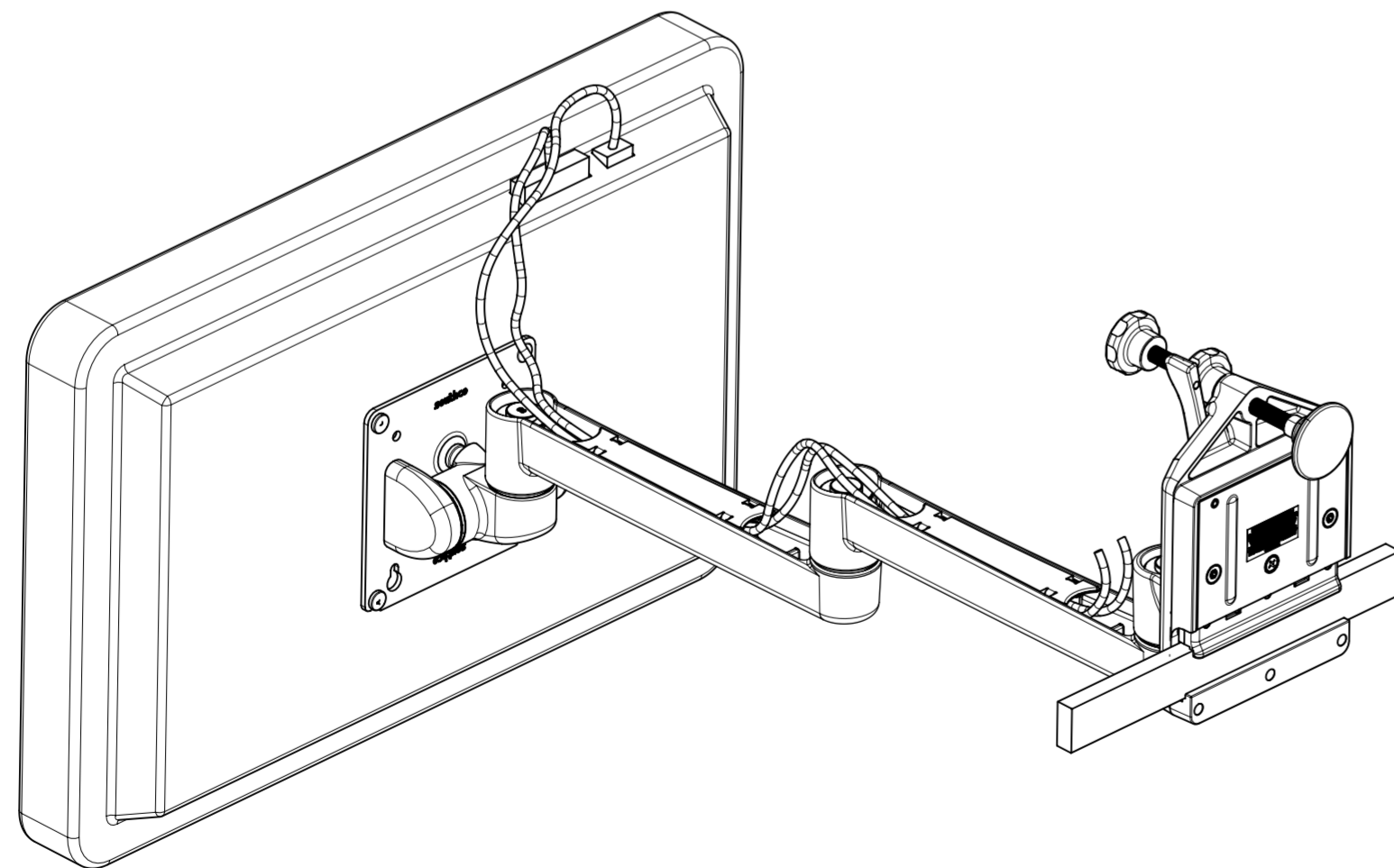
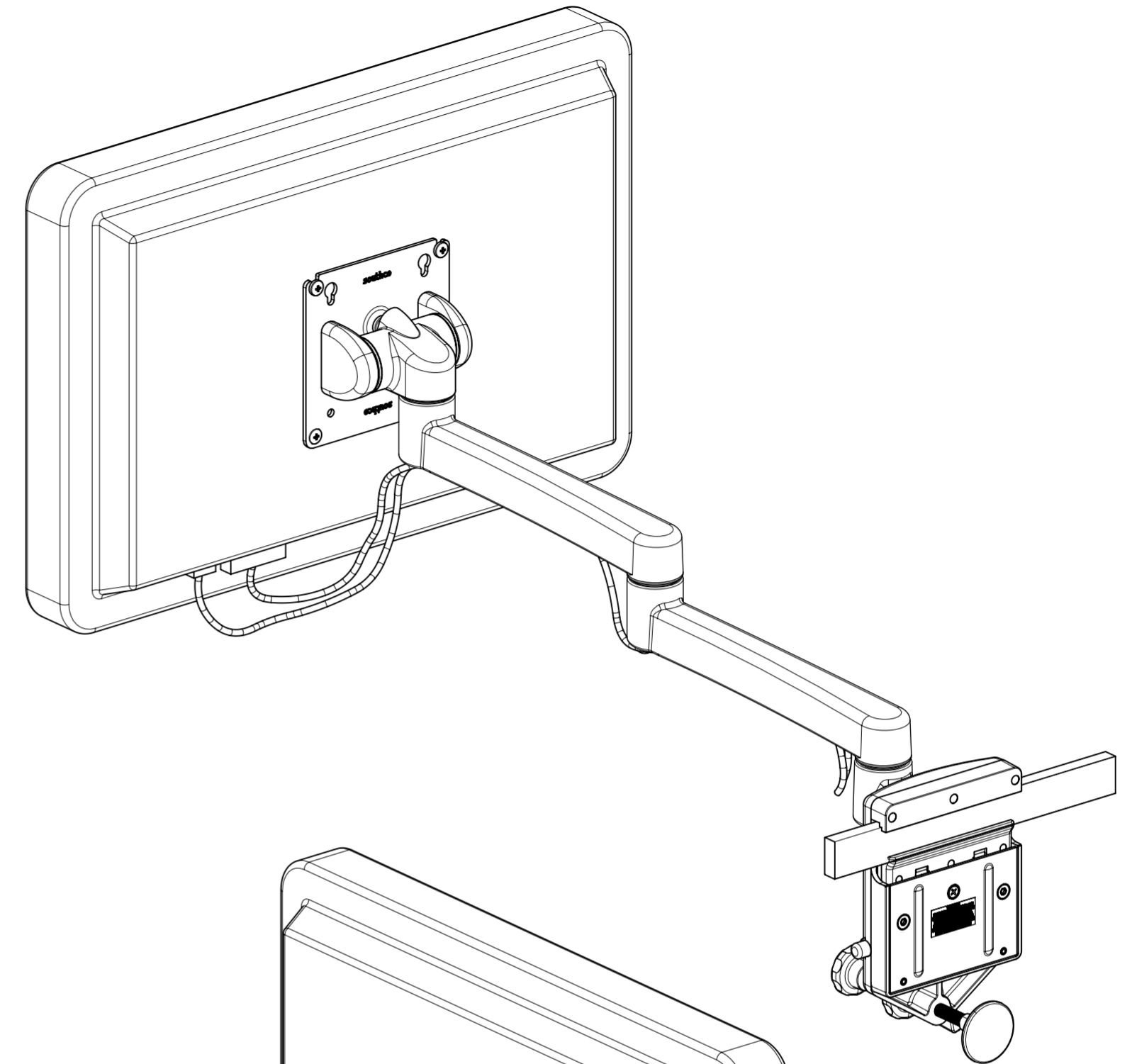
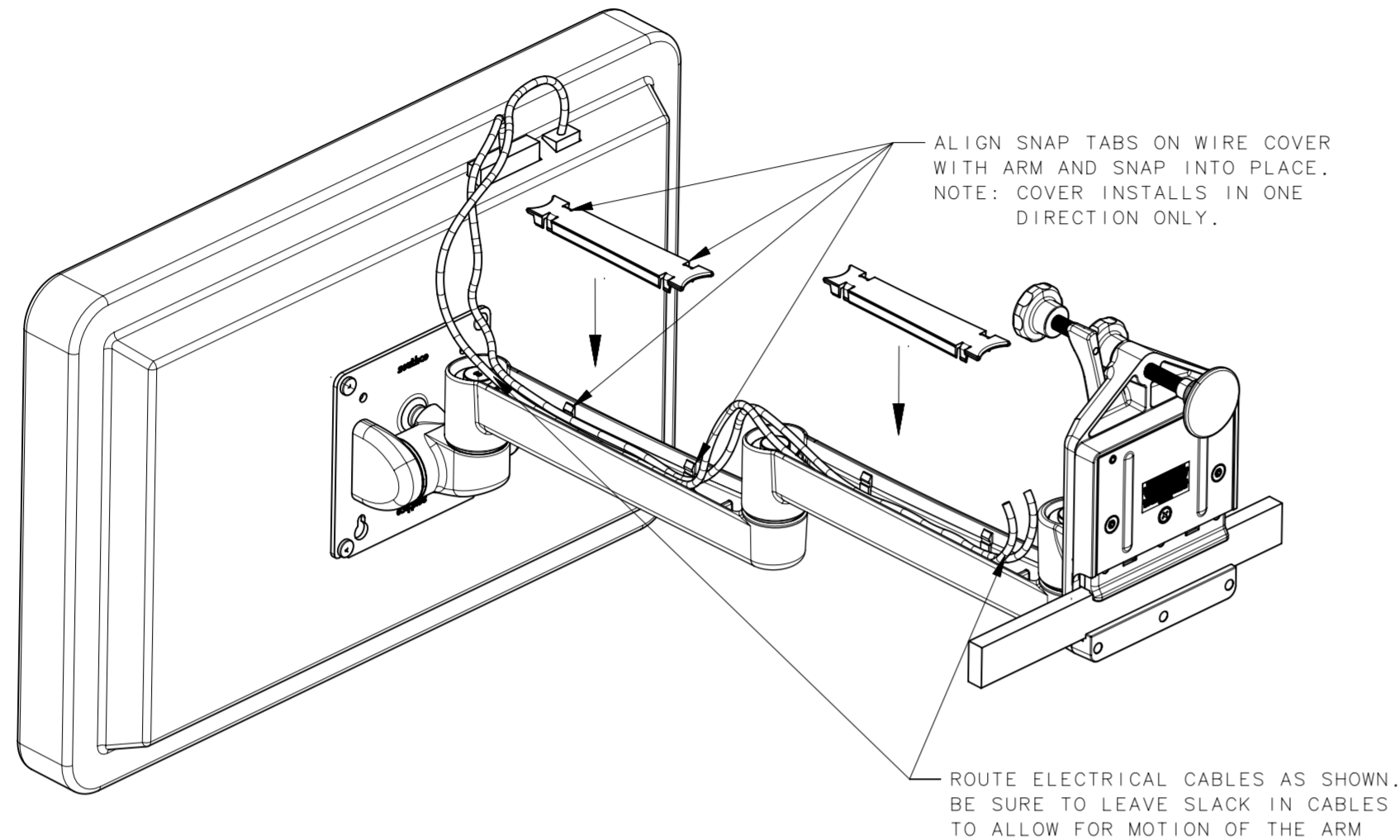
4

3

2

1

REVISION HISTORY			
REV	DATE	BY	DESCRIPTION
B	28MAY2020	GEA/DMS	PRN: P2020-0960



	THIRD ANGLE PROJECTION	southco CONNECT · CREATE · INNOVATE
	MILLIMETERS [IN]	
SURFACE AREA	TOLERANCES UNLESS OTHERWISE NOTED	DESCRIPTION TILT & SWIVEL DISPLAY MOUNT DOUBLE ARM DIN RAIL MOUNT
VOLUME	ALL DIMENSIONS WITHOUT TOLERANCES ARE FOR REFERENCE ONLY.	SIZE SYSTEM A2 NX
PROPRIETARY ITEM EXCEPT FOR USES EXPRESSLY GRANTED IN WRITING, INFORMATION DISCLOSED HEREON IS CONFIDENTIAL AND ALL RIGHTS, PATENT AND OTHERWISE, ARE RESERVED BY SOUTHCO, INC.	PER ASME Y14.5M-1994	DWG NO. J-AV-D32-46D171
		DRAWN BY CBI/DMS
		DATE 30APR2018
		SCALE 0.3:1
		SHEET 4 OF 4

8

7

6

5

4

3

2

1