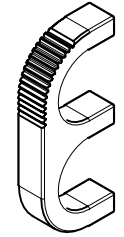
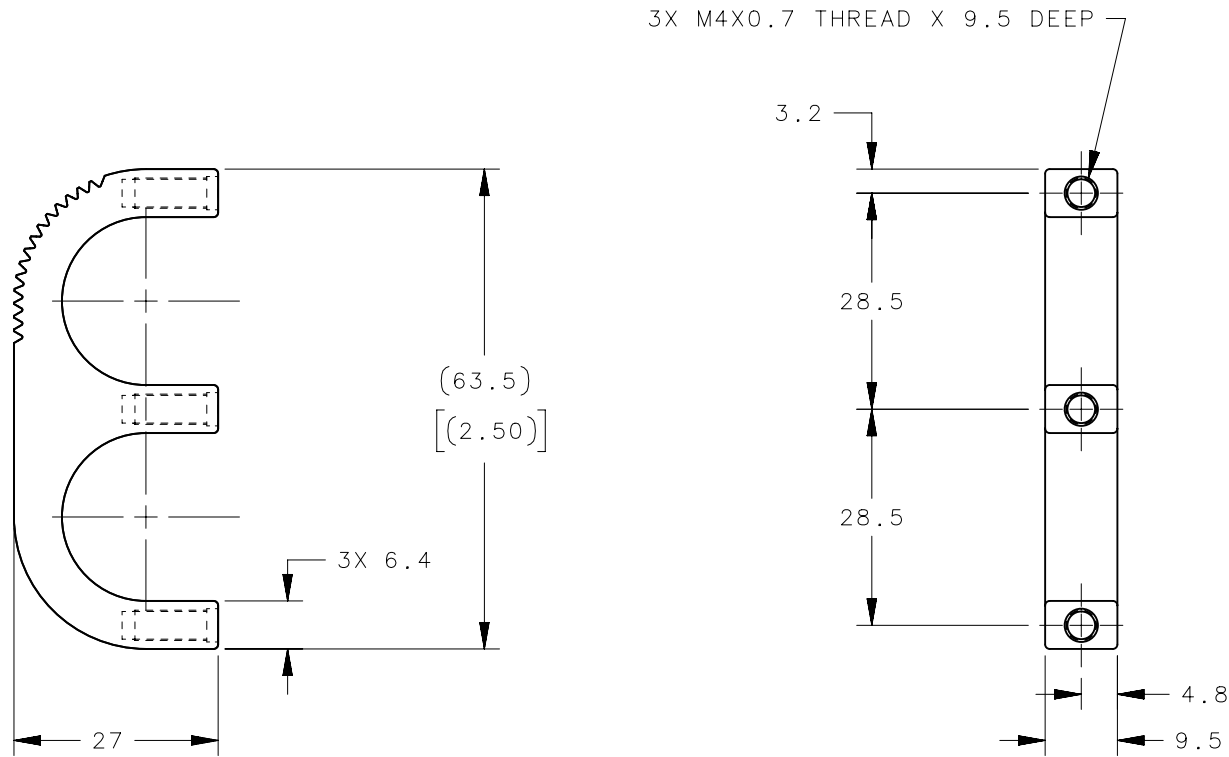


REVISION HISTORY			
REV	DATE	BY	DESCRIPTION
D	18AUG2016	RNG/YGC	PRN: P2016-1911



SCALE 1:2

NOTES:

- COSMETIC SPECIFICATION:
ALL SURFACES UNLESS OTHERWISE NOTED ARE TO CONFORM TO A CLASS "B" DESIGNATION AS DESCRIBED IN SOUTHCO COSMETIC SPECIFICATION: S-121-03 FOR POWDER COATING S-121-06 FOR ANODIZED FINISH
- RoHS COMPLIANT.
- INSTALLATION
SCREW LENGTH= THICKNESS OF PANEL PLUS 9.5
ATTACH WITH M4X0.7 SCREW NOT SUPPLIED.
(USE 5.0 DIA. HOLES IN PANEL)

B4-50-203-75	PULL	6063 ALUMINUM	SILVER POWDER COATED
B4-50-203-15	PULL	6063 ALUMINUM	BLACK ANODIZED
B4-50-203-12	PULL	6063 ALUMINUM	BLACK POWDER COATED
B4-50-203-11	PULL	6063 ALUMINUM	CLEAR ANODIZED
SOUTHCO PART NUMBER	TYPE OF COMPONENT	MATERIAL	FINISH

THIRD ANGLE PROJECTION		 CONNECT • CREATE • INNOVATE	
MILLIMETERS [IN]			
TOLERANCES UNLESS OTHERWISE NOTED		DESCRIPTION NO. B4 PULL (200 SERIES) (WITH METRIC THREADS)	
ALL DIMENSIONS WITHOUT TOLERANCES ARE FOR REFERENCE ONLY.		SIZE A4	SYSTEM NX
<small>PROPRIETARY ITEM EXCEPT FOR USES EXPRESSLY GRANTED IN WRITING, INFORMATION DISCLOSED HEREON IS CONFIDENTIAL AND ALL RIGHTS, PATENT AND OTHERWISE, ARE RESERVED BY SOUTHCO, INC.</small>		DWG NO. J-B4-50-203	
PER ASME Y14.5M-1994		DRAWN BY JGK	DATE 22JAN1999
		SCALE 1:1	SHEET 1 OF 1