

REVISION HISTORY			
REV	DATE	BY	DESCRIPTION
D	01DEC2020	CBI/VK	PRN: P2020-2219

ASSEMBLY NO.	POSITION TORQUE N-m (in-lbf)	DETENT OPEN ANGLE	SUB-ASSEMBLY NO.	COVER NO.
C6-221	0.7 (6)	80° DETENT	C6-251	C6-602
C6-222	1.1 (10)		C6-252	C6-602
C6-223	1.7 (15)		C6-253	C6-602
C6-224	0.7 (6)	115° DETENT	C6-254	C6-602
C6-225	1.1 (10)		C6-255	C6-602
C6-226	1.7 (15)		C6-256	C6-602
C6-227	0.7 (6)	150° DETENT	C6-257	C6-602
C6-228	1.1 (10)		C6-258	C6-602
C6-229	1.7 (15)		C6-259	C6-602
C6-220	-	NO DETENTS	C6-250	C6-602

SUB-ASSEMBLIES AND COVERS ARE DESIGNED TO ACCOMODATE MOUNTING HARDWARE WITH A MAXIMUM HEAD DIAMETER OF 10.2 AND A MAXIMUM HEIGHT OF 3.0

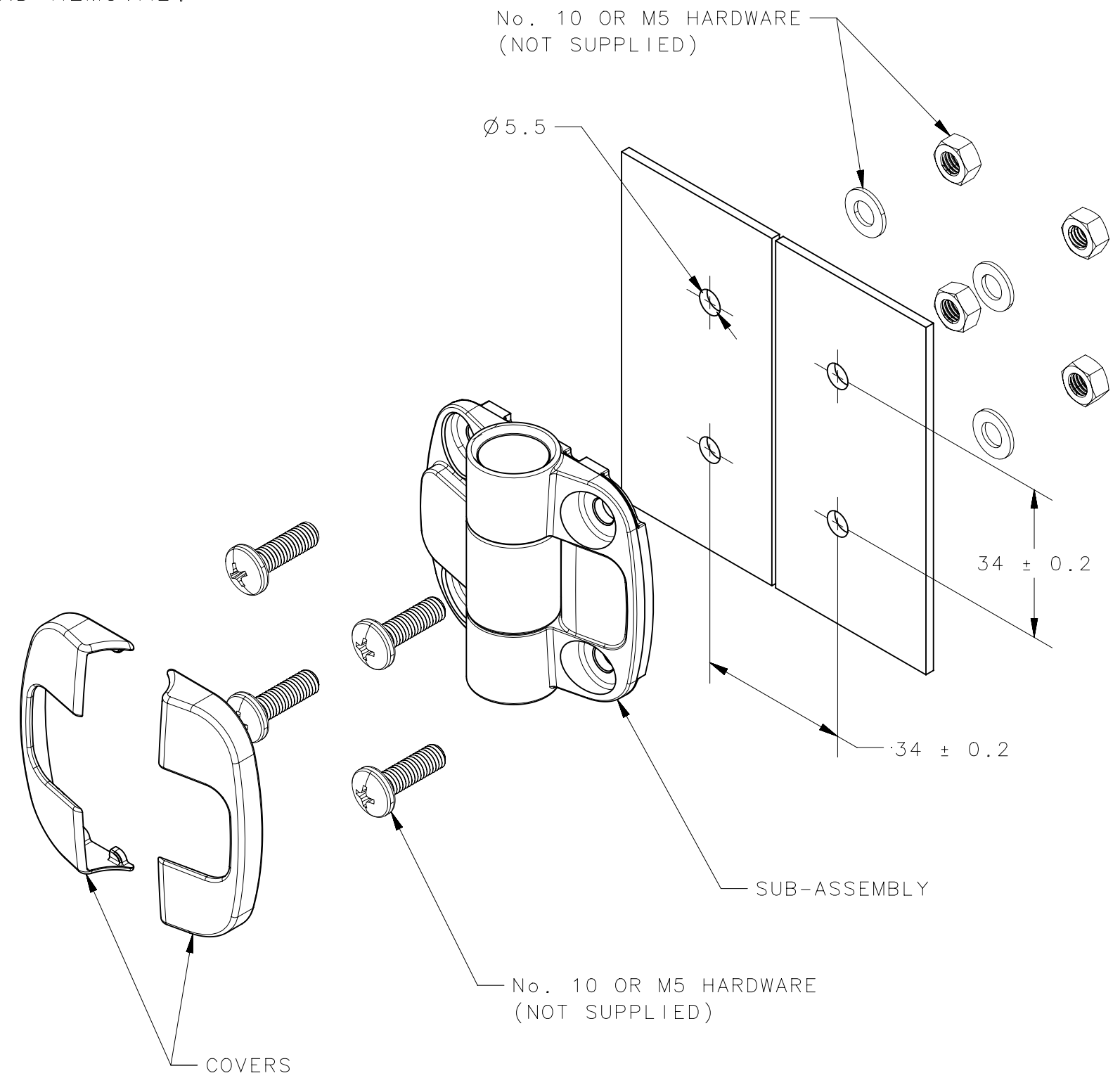
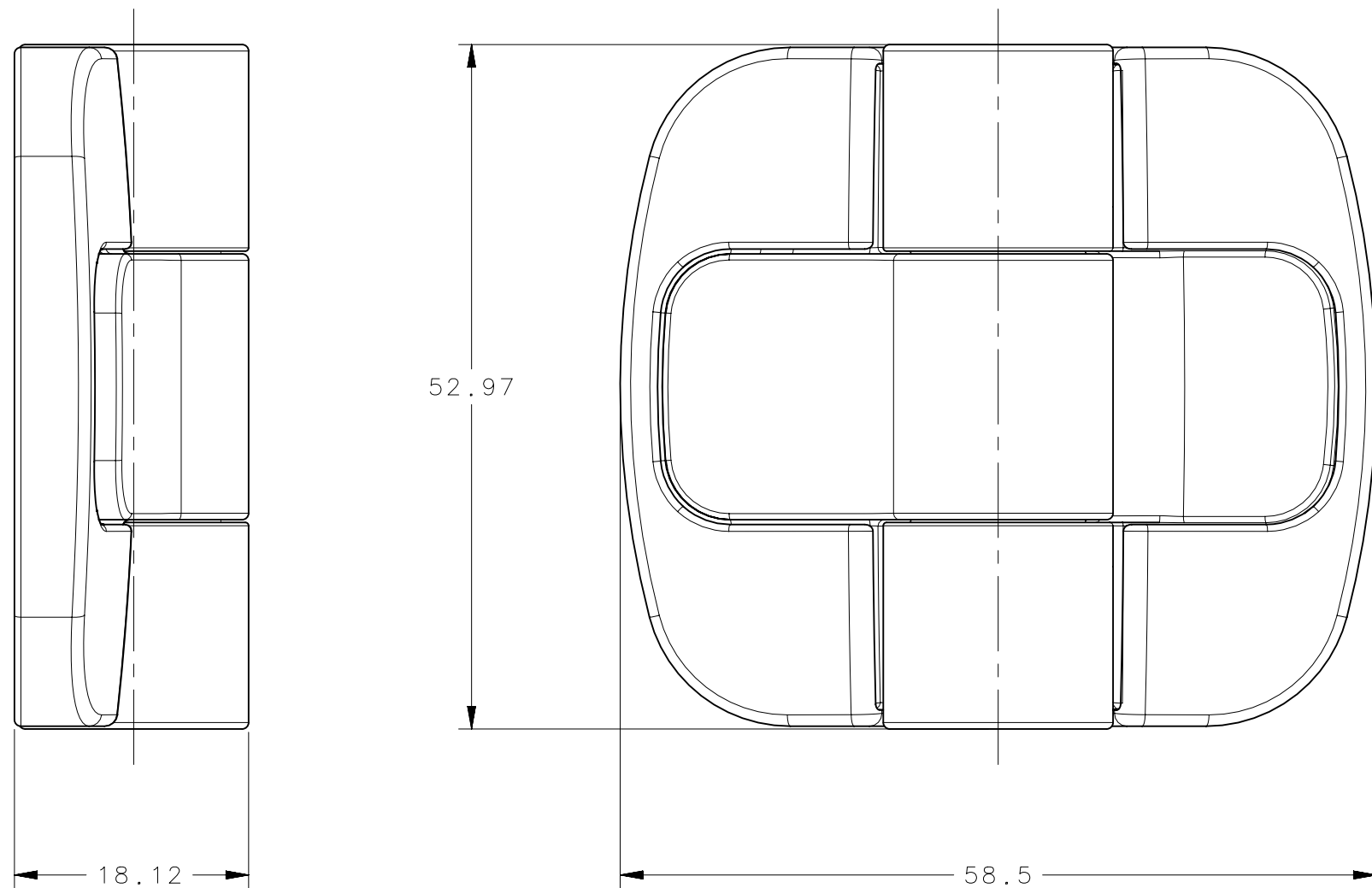
INSTALLATION INSTRUCTIONS:

1. PREPARE INSTALLATION HOLES AS SHOWN.
2. MOUNT HINGE SUB-ASSEMBLY WITH APPROPRIATE FASTENING HARDWARE (NOT SUPPLIED).
3. PRESS COVERS IN PLACE IF DESIRED TO HIDE THE MOUNTING HARDWARE. ALLOW 3mm OF CLEARANCE AROUND PROFILE OF HINGE FOR COVER INSTALLATION AND REMOVAL.

ASSEMBLY PART NUMBERS SHOWN CONSIST OF 1 SUB-ASSEMBLY AND 2 COVERS, SHIPPED SEPARATELY, BULK.

ADDITIONAL ASSEMBLY PART NUMBERS

FOR 1 SUBASSEMBLY AND 2 COVERS PACKAGED IN A POLY BAG, ADD -P TO THE PART NUMBER. EXAMPLE: C6-221-P



MATERIAL AND FINISH:

EXTERNAL COMPONENTS

- HINGE LEAVES, COVERS, END PLUGS, SPRING COVER: ACETAL, BLACK.

INTERNAL COMPONENTS:

- BALLS AND SPRINGS: STAINLESS STEEL
- DETENT TUBE: STAINLESS STEEL, PASSIVATED

THIRD ANGLE PROJECTION		 CONNECT · CREATE · INNOVATE	
MILLIMETERS [IN]			
SURFACE AREA mm <sup>2</sup>		DESCRIPTION C6 DOOR POSITIONING HINGE BLACK	
VOLUME mm <sup>3</sup>		SIZE SYSTEM C NX	
<small>PROPRIETARY ITEM EXCEPT FOR USES EXPRESSLY GRANTED IN WRITING, INFORMATION DISCLOSED HEREON IS CONFIDENTIAL AND ALL RIGHTS, PATENT AND OTHERWISE, ARE RESERVED BY SOUTHCO, INC.</small>		DWG NO. J-C6-200	
PER ASME Y14.5M-1994		DRAWN BY JJT	DATE 25JUL2014
		SCALE 2:1	SHEET 1 OF 2

REVISION HISTORY			
REV	DATE	BY	DESCRIPTION
D	01DEC2020	CB1/VK	PRN: P2020-2219

ASSEMBLY NO.	POSITION TORQUE N-m (in-lbf)	DETENT OPEN ANGLE	SUB-ASSEMBLY NO.	COVER NO.
C6-221-1	0.7 (6)	80° DETENT	C6-251-1	C6-602-1
C6-222-1	1.1 (10)		C6-252-1	C6-602-1
C6-223-1	1.7 (15)		C6-253-1	C6-602-1
C6-224-1	0.7 (6)	115° DETENT	C6-254-1	C6-602-1
C6-225-1	1.1 (10)		C6-255-1	C6-602-1
C6-226-1	1.7 (15)		C6-256-1	C6-602-1
C6-227-1	0.7 (6)	150° DETENT	C6-257-1	C6-602-1
C6-228-1	1.1 (10)		C6-258-1	C6-602-1
C6-229-1	1.7 (15)		C6-259-1	C6-602-1
C6-220-1	-	NO DETENTS	C6-250-1	C6-602-1

SUB-ASSEMBLIES AND COVERS ARE DESIGNED TO ACCOMODATE MOUNTING HARDWARE WITH A MAXIMUM HEAD DIAMETER OF 10.2 AND A MAXIMUM HEIGHT OF 3.0

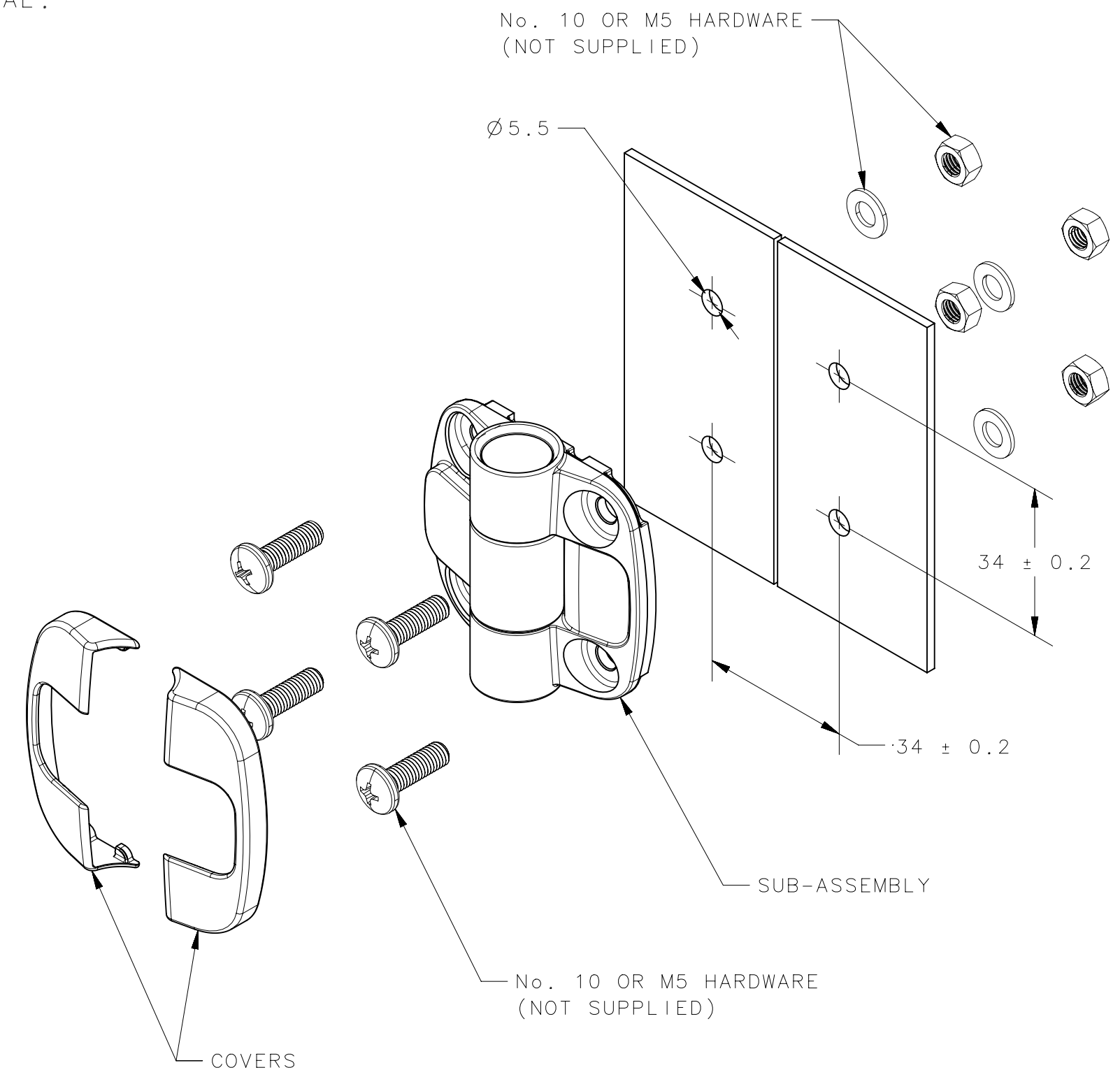
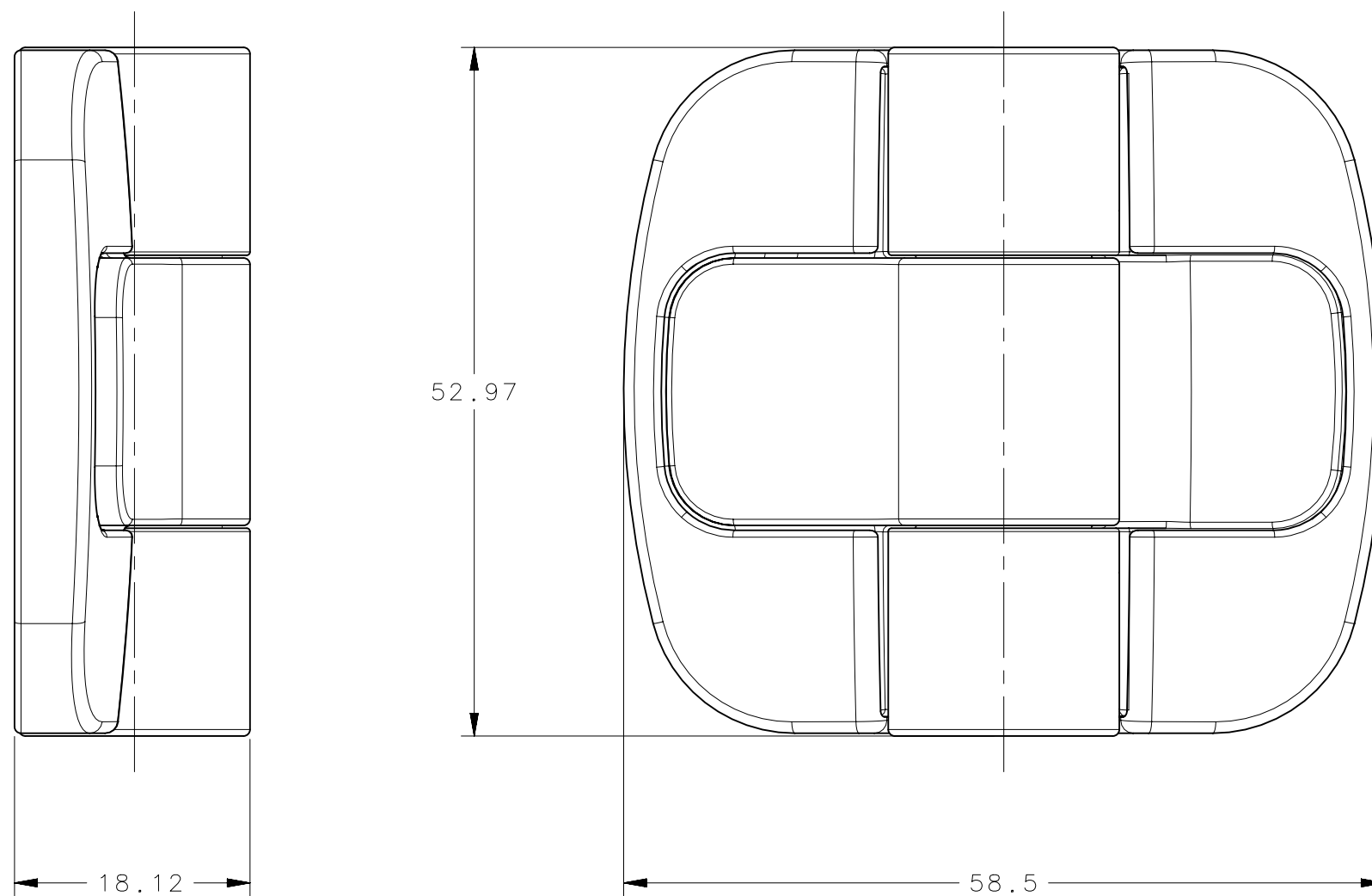
INSTALLATION INSTRUCTIONS:

1. PREPARE INSTALLATION HOLES AS SHOWN.
2. MOUNT HINGE SUB-ASSEMBLY WITH APPROPRIATE FASTENING HARDWARE (NOT SUPPLIED).
3. PRESS COVERS IN PLACE IF DESIRED TO HIDE THE MOUNTING HARDWARE. ALLOW 3mm OF CLEARANCE AROUND PROFILE OF HINGE FOR COVER INSTALLATION AND REMOVAL.

ASSEMBLY PART NUMBERS SHOWN CONSIST OF 1 SUB-ASSEMBLY AND 2 COVERS, SHIPPED SEPARATELY, BULK.

ADDITIONAL ASSEMBLY PART NUMBERS

FOR 1 SUBASSEMBLY AND 2 COVERS PACKAGED IN A POLY BAG, ADD -P TO THE PART NUMBER. EXAMPLE: C6-221-1-P



MATERIAL AND FINISH:  
 EXTERNAL COMPONENTS  
 - HINGE LEAVES, COVERS, END PLUGS, SPRING COVER: ACETAL, WHITE  
 INTERNAL COMPONENTS:  
 - BALLS AND SPRINGS: STAINLESS STEEL  
 - DETENT TUBE: STAINLESS STEEL, PASSIVATED

CPB NUMBER 2012-0284	THIRD ANGLE PROJECTION		<b>southco</b> CONNECT · CREATE · INNOVATE	
	MILLIMETERS [IN]			
SURFACE AREA XXXXXmm <sup>2</sup>	TOLERANCES UNLESS OTHERWISE NOTED		DESCRIPTION C6 DOOR POSITIONING HINGE WHITE	
VOLUME XXXXXmm <sup>3</sup>	ALL DIMENSIONS WITHOUT TOLERANCES ARE FOR REFERENCE ONLY.		SIZE C	SYSTEM NX
PROPRIETARY ITEM	PER ASME Y14.5M-1994		DWG NO. J-C6-200	SCALE 1:1
EXCEPT FOR USES EXPRESSLY GRANTED IN WRITING, INFORMATION DISCLOSED HEREON IS CONFIDENTIAL AND ALL RIGHTS, PATENT AND OTHERWISE, ARE RESERVED BY SOUTHCO, INC.	DRAWN BY CB1/VK	DATE 01DEC2020	SHEET 2 OF 2	