

| REV | DATE      | DRAWN/CHKD | DESCRIPTION     |
|-----|-----------|------------|-----------------|
| B   | 08MAR2007 | MJS/KPL    | PRN: P2007-0350 |
| C   | 24APR2008 | CW/MJS     | PRN: P2008-0453 |
| D   | 22OCT2009 | ACH/MJS    | PRN: P2009-1222 |
| E   | 14SEP2015 | CMS/LT     | PRN: P2015-1864 |

**MILLIMETERS**

ALL DIMENSIONS WITHOUT TOLERANCES ARE FOR REFERENCE ONLY.

THIRD ANGLE PROJECTION

A3 PAPER SIZE

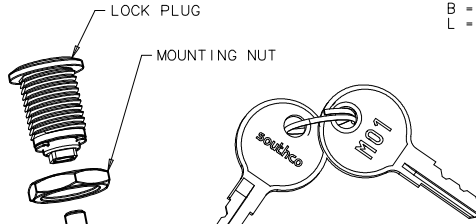
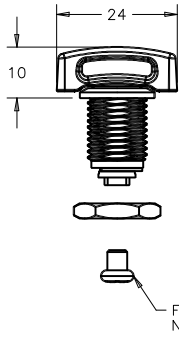
SHEET 1 OF 2

WING PART NUMBER:

CM-9-1  109-12N

KEY LOCKING PART NUMBER:

CM-9-1  109-21  -



HOUSING FINISH:  
B = BLACK POWDER COATED  
C = CHROME PLATED

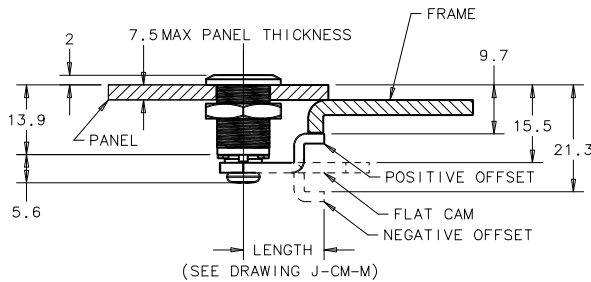
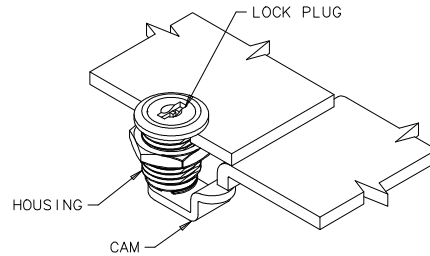
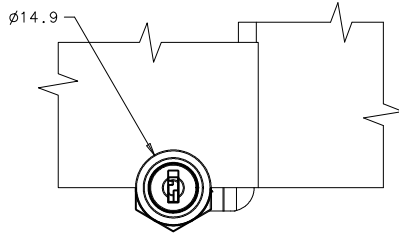
KEY REMOVABLE:  
B = LOCKED/UNLOCKED POSITION  
L = LOCKED POSITION

KEY CODE:  
KA = KEYED ALIKE, KEY CODE M01  
KD = KEYED DIFFERENTLY, CODES M01-M10

- M02 = KEY CODE M02
  - M03 = KEY CODE M03
  - M04 = KEY CODE M04
  - M05 = KEY CODE M05
  - M06 = KEY CODE M06
  - M07 = KEY CODE M07
  - M08 = KEY CODE M08
  - M09 = KEY CODE M09
  - M10 = KEY CODE M10
- OMIT FOR TOOL WING OR TOOL DRIVER

FOR KEY INFORMATION  
SEE DRAWING J-PK-CM-0-9

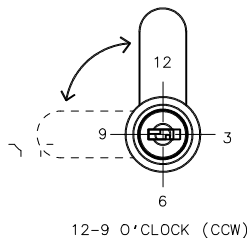
NOTES:  
A. FOR INSTALLATION AND PANEL PREPARATION SEE SHEET 2.  
B. SEE J-CM-M FOR CAM PART NUMBERS.



PART No. CM-9-1B109-21B-KA SHOWN  
ASSEMBLED WITH CAM PART No. CM-M101  
(CAM ORDERED SEPARATELY)

CAM ROTATION DIRECTION

NOTE: LOCK PLUG IS SHOWN IN THE UNLOCKED POSITION.  
SOLID LINE CAM DEPICTS UNLOCKED CAM POSITION.  
DOTTED LINE CAM DEPICTS LOCKED CAM POSITION.  
LOCK PLUG IN LOCKED POSITION IS NOT SHOWN.



PANEL PREPARATION  
ORIENTATION

MATERIAL AND FINISH

| COMPONENT               | MATERIAL DESCRIPTION | FINISH DESCRIPTION                              | REMARKS   |
|-------------------------|----------------------|---|---|
| LOCK PLUG & WING DRIVER | DIE CAST ZINC        | CHROME PLATED                                   |   |
|                         |                      | TRIVALENT CHROMATE CONV. COATED & POWDER COATED | VISIBLE PORTION OF LOCK PLUG IN ASSEMBLY IS POWDER COATED |
| HOUSING                 | DIE CAST ZINC        | CHROME PLATED                                   |   |
|                         |                      | TRIVALENT CHROMATE CONV. COATED & POWDER COATED | HEAD IS POWDER COATED ABOVE SECTION A-A                   |
| RETAINING-RING          | STEEL                | ZINC PLATE, BRIGHT CHROMATE CONV. COATING       |   |
| SCREW                   | STEEL                | ZINC PLATE, BRIGHT CHROMATE CONV. COATING       |   |
| MOUNTING NUT            | DIE CAST ZINC        | TRIVALENT CHROMATE CONV. COATING                |   |
| KEYS, 2 FLAT            | BRASS                | NICKEL PLATE                                    | 2 KEYS ON A RING  |
| STEEL BALL              | CHROME STEEL         | NATURAL   | WING DRIVER VERSION ONLY!                                 |
| SPRING                  | STAINLESS STEEL      | PASSIVATED                                      | WING DRIVER VERSION ONLY!                                 |

| REV | DATE      | DRAWN/CHKD | DESCRIPTION     |
|-----|-----------|------------|-----------------|
| B   | 08MAR2007 | MJS/KPL    | PRN: P2007-0350 |
| C   | 24APR2008 | CW/MJS     | PRN: P2008-0453 |
| D   | 22OCT2009 | ACH/MJS    | PRN: P2009-1222 |
| E   | 14SEP2015 | CMS/LT     | PRN: P2015-1864 |

**MILLIMETERS**

ALL DIMENSIONS WITHOUT TOLERANCES ARE FOR REFERENCE ONLY.

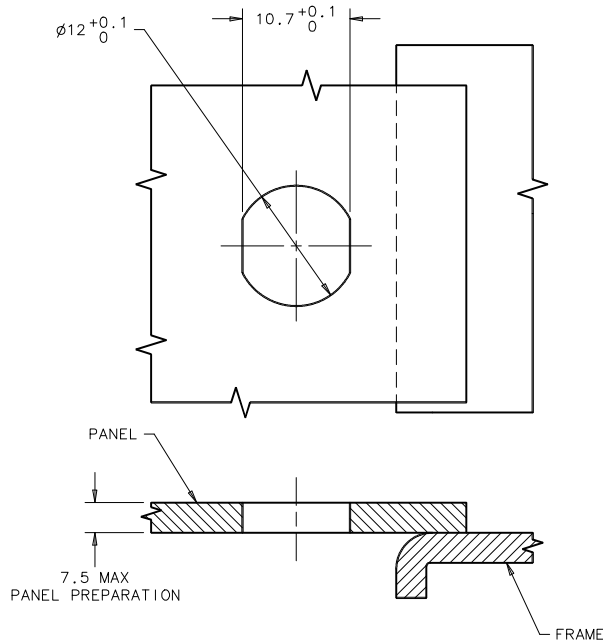
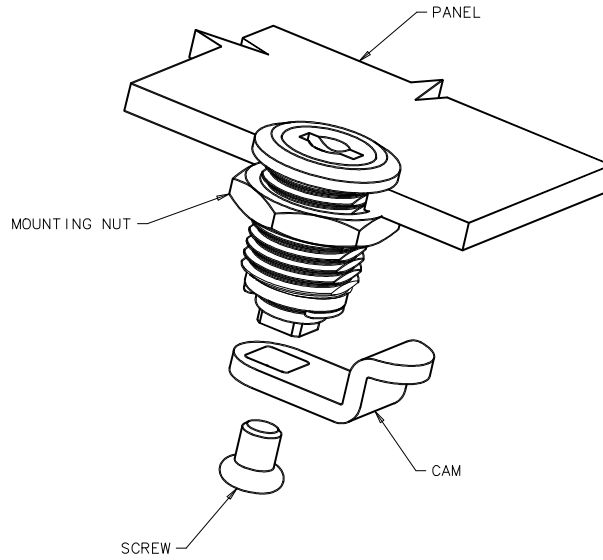
THIRD ANGLE PROJECTION

A3 PAPER SIZE

SHEET 2 OF 2

**INSTALLATION:**

1. INSTALL MOUNTING NUT AND TIGHTEN TO 3 N·m (26 lbf-in).
2. INSTALL CAM TO LATCH ASSEMBLY, REFER TO SHEET 1 FOR CAM ROTATION ILLUSTRATIONS FOR PROPER ORIENTATION.
3. INSTALL SCREW, TIGHTEN TO 2 N·m (18 lbf-in) MAX WITH A No. 2 PHILLIPS DRIVER.



PANEL PREPARATION