

**southco**<sup>®</sup>

PROPRIETARY ITEM - EXCEPT FOR USES EXPRESSLY GRANTED IN WRITING INFORMATION DISCLOSED HEREON IS CONFIDENTIAL AND ALL RIGHTS PATENT AND OTHERWISE ARE RESERVED BY SOUTHCO, INC.

CAM

DATE: 08APR2003  
 DRAWN: DLH  
 CHKD: BS  
 SCALE: 1.5:1

DRAWING NUMBER

J-CM-C

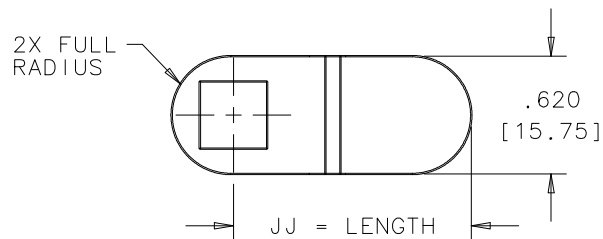
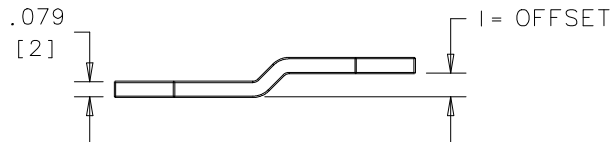
REV	DATE	DRAWN/CHKD	DESCRIPTION	PART NUMBER	MATERIAL	FINISH
A	27JUN2003	DLH/AJH	PRN: P2003-0538	CM-Z1JJ	STEEL	ZINC PLATE, BRIGHT TRIVALENT CHROMATE CONV. COAT
B	23JUL2003	RLR/AJH	PRN: P2003-0627			
C	28AUG2003	AJH/MJS	PRN: P2003-0749			
D	19JUN2006	LCR/MDY	PRN: P2006-0051			
E	12JUL2006	LCR/MJS	PRN: P2006-0960			
F	14FEB2007	AJH/AJH	PRN: P2007-0252			
G	23APR2008	ACH/MJS	PRN: P2008-0449			
H	13OCT2009	MJS/MJS	PRN: P2009-1198			
I	26JUN2017	CMS/MGG	PRN: P2017-1525			

Z	CAM TYPE	I	OFFSET ±.010	JJ	LENGTH ±.020
C	NO HOOK	0	STRAIGHT	04	.500 [12.7]
H	HOOK, TYPE 1	1	.0625 [1.59]	05	.625 [15.87]
L	HOOK, TYPE 2	2	.125 [3.17]	06	.750 [19.05]
		3	.1875 [4.76]	07	.875 [22.22]
		4	.250 [6.35]	08	1.000 [25.4]
		5	.3125 [7.93]	09	1.125 [28.58]
		6	.375 [9.52]	10	1.250 [31.75]
				11	1.375 [34.92]
				12	1.500 [38.1]
				13	1.625 [41.28]
				14	1.750 [44.45]
				15	1.875 [47.62]
				16	2.000 [50.8]

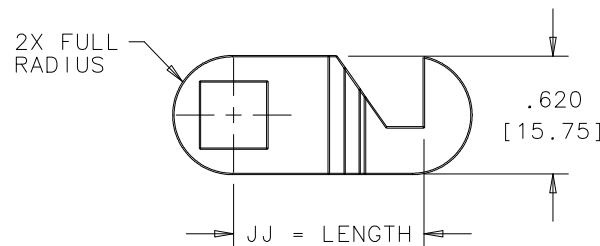
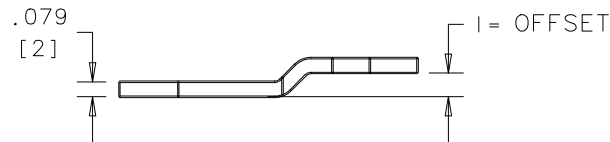
ALL DIMENSIONS WITHOUT TOLERANCES ARE FOR REFERENCE ONLY.

THIRD ANGLE PROJECTION  
 A PAPER SIZE

NO HOOK



HOOK, TYPE 1



HOOK, TYPE 2

