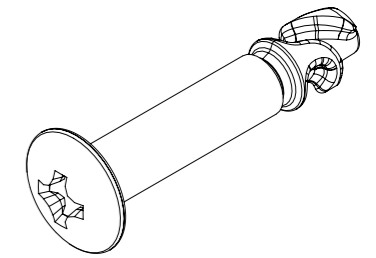


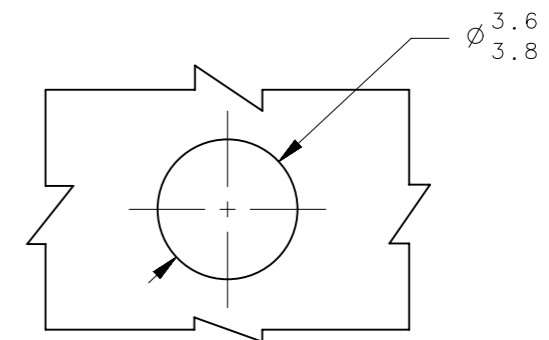
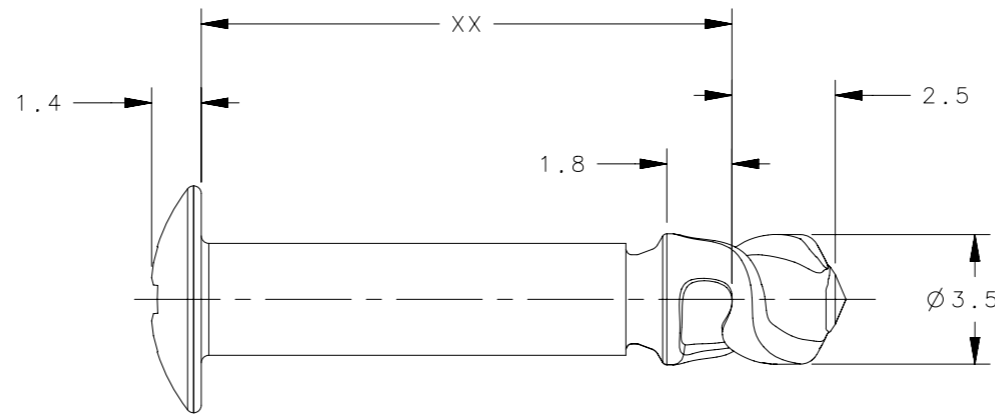
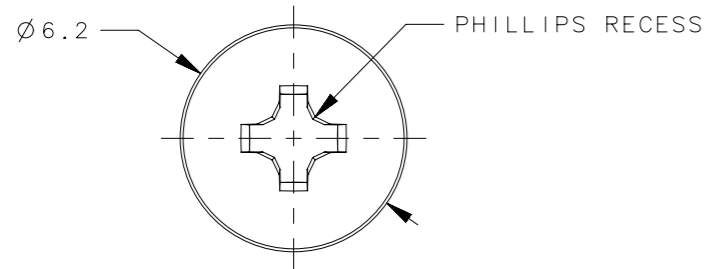
| PART NUMBER | TOTAL GRIP | XX |
|----------------|------------|----|
| D2-513-707-1XX | 2.5-3.4 | 07 |
| D2-513-708-1XX | 3.5-4.4 | 08 |
| D2-513-709-1XX | 4.5-5.4 | 09 |
| D2-513-710-1XX | 5.5-6.4 | 10 |
| D2-513-711-1XX | 6.5-7.4 | 11 |
| D2-513-712-1XX | 7.5-8.4 | 12 |
| D2-513-713-1XX | 8.5-9.4 | 13 |
| D2-513-714-1XX | 9.5-10.4 | 14 |
| D2-513-715-1XX | 10.5-11.4 | 15 |
| D2-513-716-1XX | 11.5-12.4 | 16 |
| D2-513-717-1XX | 12.5-13.4 | 17 |
| D2-513-718-1XX | 13.5-14.4 | 18 |
| D2-513-719-1XX | 14.5-15.4 | 19 |
| D2-513-720-1XX | 15.5-16.4 | 20 |
| D2-513-721-1XX | 16.5-17.4 | 21 |
| D2-513-722-1XX | 17.5-18.4 | 22 |
| D2-513-723-1XX | 18.5-19.4 | 23 |
| D2-513-724-1XX | 19.5-20.4 | 24 |

| PART NUMBER | TOTAL GRIP | XX |
|----------------|------------|----|
| D2-513-725-1XX | 20.5-21.4 | 25 |
| D2-513-726-1XX | 21.5-22.4 | 26 |
| D2-513-727-1XX | 22.5-23.4 | 27 |
| D2-513-728-1XX | 23.5-24.4 | 28 |
| D2-513-729-1XX | 24.5-25.4 | 29 |
| D2-513-730-1XX | 25.5-26.4 | 30 |
| D2-513-731-1XX | 26.5-27.4 | 31 |
| D2-513-732-1XX | 27.5-28.4 | 32 |
| D2-513-733-1XX | 28.5-29.4 | 33 |
| D2-513-734-1XX | 29.5-30.4 | 34 |
| D2-513-735-1XX | 30.5-31.4 | 35 |
| D2-513-736-1XX | 31.5-32.4 | 36 |
| D2-513-737-1XX | 32.5-33.4 | 37 |
| D2-513-738-1XX | 33.5-34.4 | 38 |
| D2-513-739-1XX | 34.5-35.4 | 39 |
| D2-513-740-1XX | 35.5-36.4 | 40 |
| D2-513-741-1XX | 36.5-37.4 | 41 |
| D2-513-742-1XX | 37.5-38.4 | 42 |

| REVISION HISTORY | | | |
|------------------|-----------|---------|-----------------|
| REV | DATE | BY | DESCRIPTION |
| A | 31MAY2016 | DKM/YGC | PRN: P2016-1247 |



SCALE 3:1



STUD PANEL PREPARATION

| D2-513-7XX-191 | STUD | STEEL | ZINC PLATED, BLACK |
|----------------|-------------------|----------|--------------------|
| D2-513-7XX-190 | STUD | STEEL | ZINC PLATED |
| D2-513-7XX-170 | STUD | STEEL | CHROME PLATED |
| PART NUMBER | TYPE OF COMPONENT | MATERIAL | FINISH |

| | | | | | |
|---|--|----------------------------------|----------------|--|--------------|
| THIRD ANGLE PROJECTION | | | | southco [®] CONNECT • CREATE • INNOVATE | |
| MILLIMETERS [IN] | | | | | |
| TOLERANCES UNLESS OTHERWISE NOTED | | DESCRIPTION RAPIER SIZE 3.5 STUD | | | |
| ALL DIMENSIONS WITHOUT TOLERANCES ARE FOR REFERENCE ONLY. | | SIZE A3 | SYSTEM NX | DWG NO. J-D2-513-7XX-1XX | |
| PER ASME Y14.5M-1994 | | DRAWN BY DKM/YGC | DATE 31MAY2016 | SCALE 5:1 | SHEET 1 OF 1 |

- NOTES:
- PHILLIPS RECESS NOT ORIENTATED WITH CAM.
 - TOTAL GRIP INCLUDES BOTH PANELS PLUS 0.5mm ADJUSTMENT VALUE FOR RETAINER (WHERE APPLICABLE).

PROPRIETARY ITEM
EXCEPT FOR USES EXPRESSLY GRANTED IN WRITING, INFORMATION DISCLOSED HEREON IS CONFIDENTIAL AND ALL RIGHTS, PATENT AND OTHERWISE, ARE RESERVED BY SOUTHCO, INC.