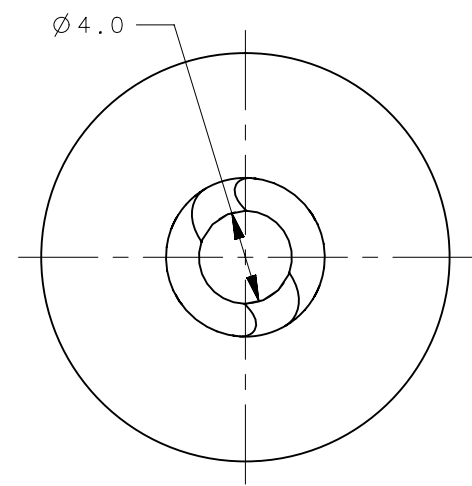
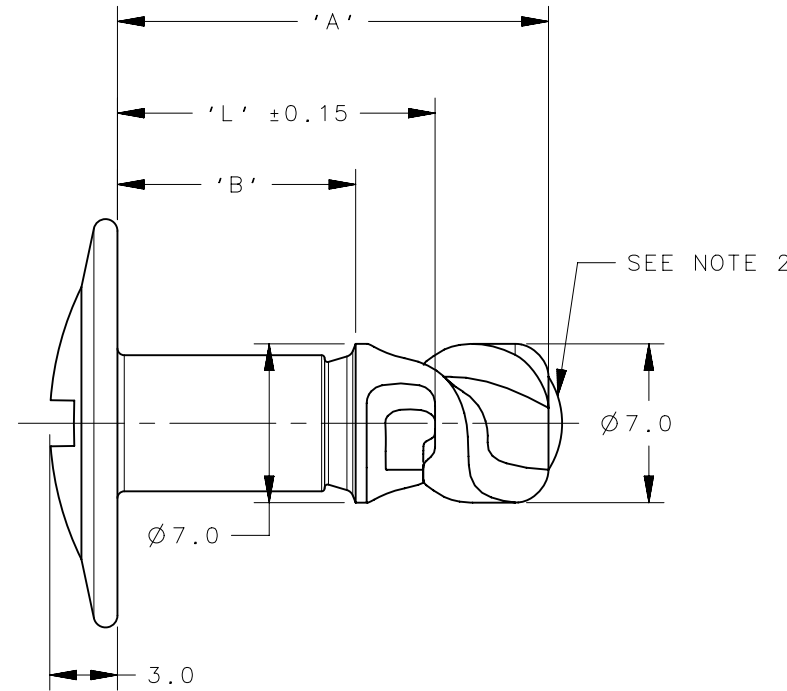
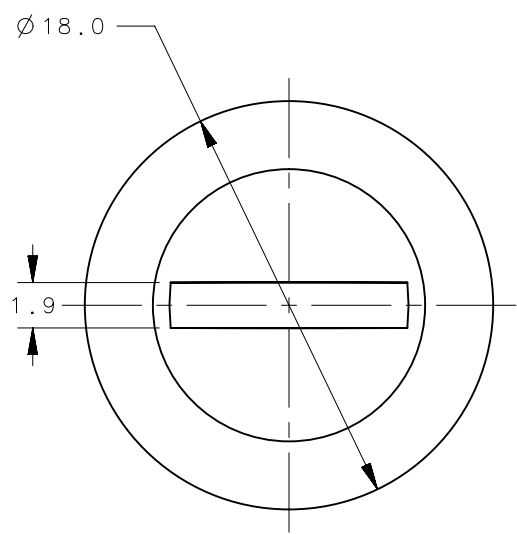


REVISION HISTORY			
REV	DATE	BY	DESCRIPTION
D	11JUN2014	MWC/YGC	PRN: P2014-1154



SCALE 1:1



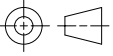

- NOTES:
1. ORIENTATION OF SLOT TO CAM IS RANDOM.
  2. ROLLING DISPLACEMENT AT THIS END MAY PROJECT 1.0 MAX. FROM TERMINATION OF 'A' DIMENSION.

D2-517-11XX-1XX		STUD		CARBON STEEL		SEE SHEET 2	
PART NUMBER		TYPE OF COMPONENT		MATERIAL		FINISH	
		THIRD ANGLE PROJECTION		 CONNECT • CREATE • INNOVATE			
		MILLIMETERS [IN]					
SURFACE AREA		TOLERANCES UNLESS OTHERWISE NOTED		DESCRIPTION RAPIER SIZE 7 STUD			
VOLUME		ALL DIMENSIONS WITHOUT TOLERANCES ARE FOR REFERENCE ONLY.		SIZE A4	SYSTEM NX	DWG NO. J-D2-517-11	
PROPRIETARY ITEM <small>EXCEPT FOR USES EXPRESSLY GRANTED IN WRITING, INFORMATION DISCLOSED HEREON IS CONFIDENTIAL AND ALL RIGHTS, PATENT AND OTHERWISE, ARE RESERVED BY SOUTHCO, INC.</small>		PER ASME Y14.5M-1994		DRAWN BY MJW	DATE 12JUN2006	SCALE 3:1	SHEET 1 OF 2

PART NO.	STUD DIMENSIONS		
	'A'	'B'	'L'
D2-517-1109-1XX	14.0	5.5	9.0
D2-517-1110-1XX	15.0	6.5	10.0
D2-517-1111-1XX	16.0	7.5	11.0
D2-517-1112-1XX	17.0	8.5	12.0
D2-517-1113-1XX	18.0	9.5	13.0
D2-517-1114-1XX	19.0	10.5	14.0
D2-517-1115-1XX	20.0	11.5	15.0
D2-517-1116-1XX	21.0	12.5	16.0
D2-517-1117-1XX	22.0	13.5	17.0
D2-517-1118-1XX	23.0	14.5	18.0
D2-517-1119-1XX	24.0	15.5	19.0
D2-517-1120-1XX	25.0	16.5	20.0
D2-517-1121-1XX	26.0	17.5	21.0
D2-517-1122-1XX	27.0	18.5	22.0
D2-517-1123-1XX	28.0	19.5	23.0
D2-517-1124-1XX	29.0	20.5	24.0
D2-517-1125-1XX	30.0	21.5	25.0
D2-517-1126-1XX	31.0	22.5	26.0
D2-517-1127-1XX	32.0	23.5	27.0
D2-517-1128-1XX	33.0	24.5	28.0
D2-517-1129-1XX	34.0	25.5	29.0
D2-517-1130-1XX	35.0	26.5	30.0
D2-517-1131-1XX	36.0	27.5	31.0
D2-517-1132-1XX	37.0	28.5	32.0
D2-517-1133-1XX	38.0	29.5	33.0
D2-517-1134-1XX	39.0	30.5	34.0
D2-517-1135-1XX	40.0	31.5	35.0
D2-517-1136-1XX	41.0	32.5	36.0
D2-517-1137-1XX	42.0	33.5	37.0
D2-517-1138-1XX	43.0	34.5	38.0
D2-517-1139-1XX	44.0	35.5	39.0
D2-517-1140-1XX	45.0	36.5	40.0
D2-517-1141-1XX	46.0	37.5	41.0
D2-517-1142-1XX	47.0	38.5	42.0

REVISION HISTORY			
REV	DATE	BY	DESCRIPTION
D	11JUN2014	MWC/YGC	PRN: P2014-1154

'XX' SUFFIX NUMBER	FINISH
30	SILVER ORGANIC - Cr6 FREE
31	BLACK ORGANIC - Cr6 FREE
51	BLACK XYLAN TO DZUS 1080 PT1
58	BLACK ORGANIC - Cr6 FREE
90	ZINC PLATE AND PASSIVATE - Cr6 FREE
91	ZINC PLATE AND BLACK PASSIVATE - Cr6 FREE
38	SILVER ORGANIC - ULTRA PERFORMANCE
80	REPLACED BY FINISH SUFFIX '30'
64	

	THIRD ANGLE PROJECTION 	 CONNECT • CREATE • INNOVATE	
	MILLIMETERS [IN]		
SURFACE AREA	TOLERANCES UNLESS OTHERWISE NOTED	DESCRIPTION RAPIER SIZE 7 STUD	
VOLUME	ALL DIMENSIONS WITHOUT TOLERANCES ARE FOR REFERENCE ONLY.	SIZE A4	SYSTEM NX
PROPRIETARY ITEM <small>EXCEPT FOR USES EXPRESSLY GRANTED IN WRITING, INFORMATION DISCLOSED HEREON IS CONFIDENTIAL AND ALL RIGHTS, PATENT AND OTHERWISE, ARE RESERVED BY SOUTHCO, INC.</small>	PER ASME Y14.5M-1994	DWG NO. J-D2-517-11	
		DRAWN BY MJW	DATE 12JUN2006
		SCALE 3:1	SHEET 2 OF 2