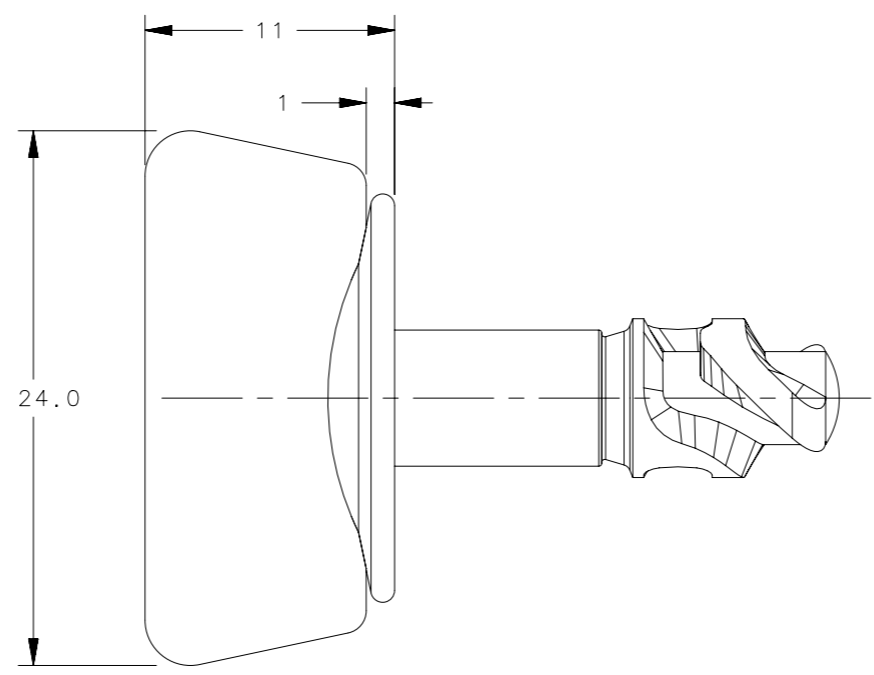
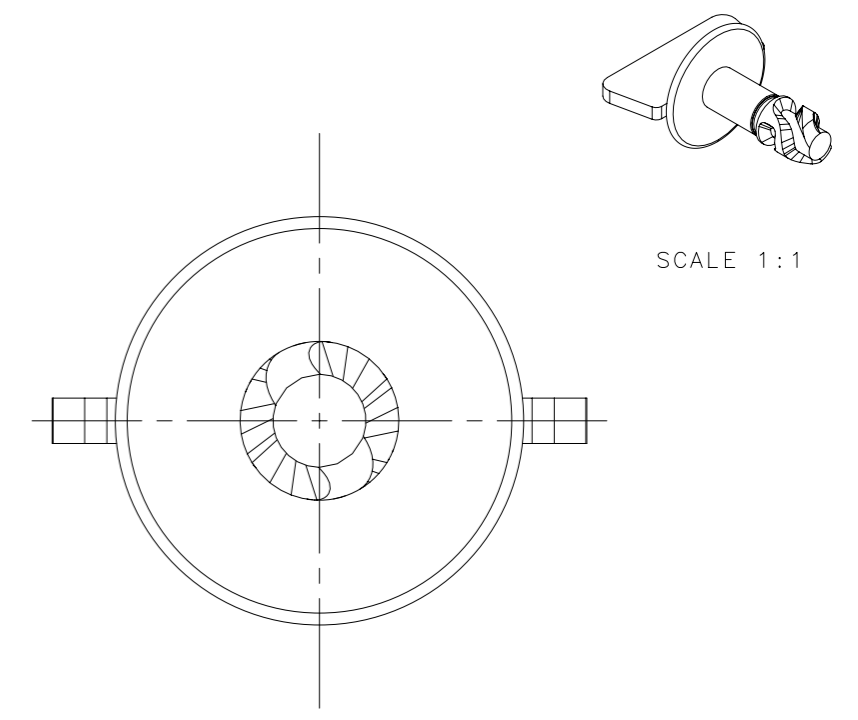
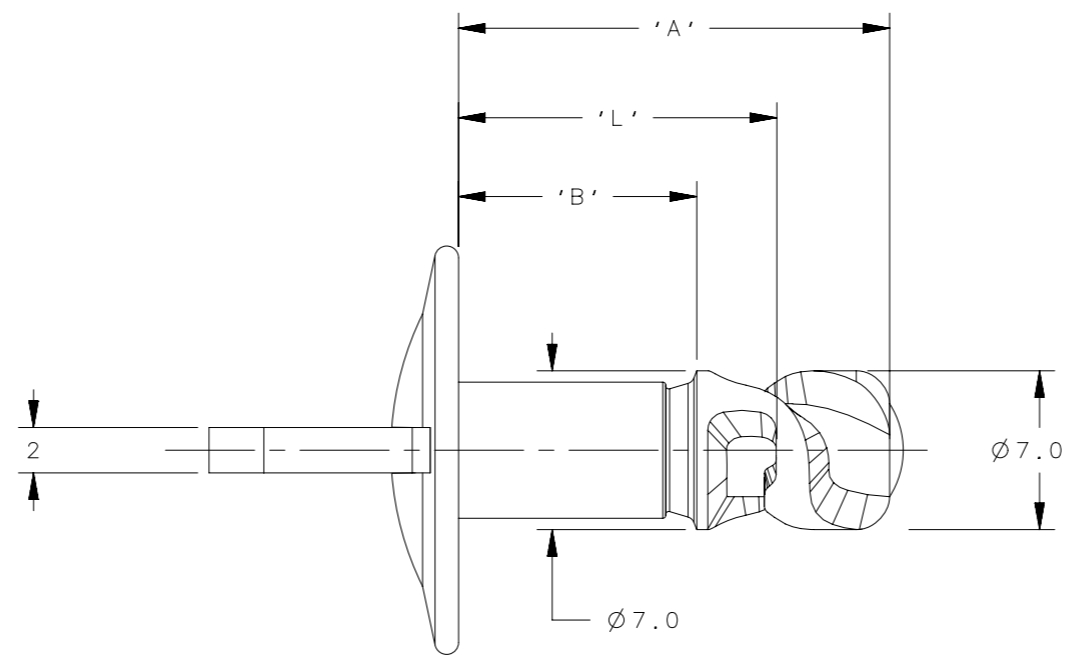
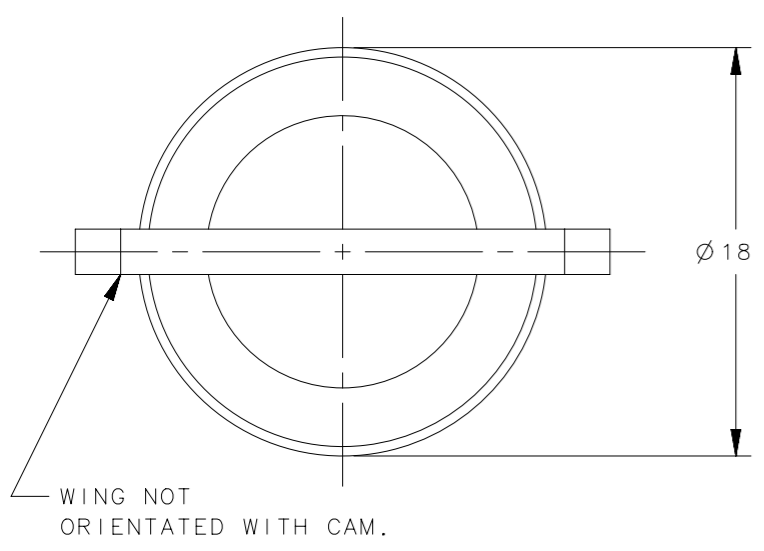


REVISION HISTORY			
REV	DATE	BY	DESCRIPTION
E	11SEP2013	MWC/YGC	PRN: P2013-2067



PART NUMBER	STUD DIMENSIONS		
	'A'	'B'	'L'
D2-517-1409-1XX	14.0	5.5	9.0
D2-517-1410-1XX	15.0	6.5	10.0
D2-517-1411-1XX	16.0	7.5	11.0
D2-517-1412-1XX	17.0	8.5	12.0
D2-517-1413-1XX	18.0	9.5	13.0
D2-517-1414-1XX	19.0	10.5	14.0
D2-517-1415-1XX	20.0	11.5	15.0
D2-517-1416-1XX	21.0	12.5	16.0
D2-517-1417-1XX	22.0	13.5	17.0
D2-517-1418-1XX	23.0	14.5	18.0
D2-517-1419-1XX	24.0	15.5	19.0
D2-517-1420-1XX	25.0	16.5	20.0
D2-517-1421-1XX	26.0	17.5	21.0
D2-517-1422-1XX	27.0	18.5	22.0
D2-517-1423-1XX	28.0	19.5	23.0
D2-517-1424-1XX	29.0	20.5	24.0
D2-517-1425-1XX	30.0	21.5	25.0
D2-517-1426-1XX	31.0	22.5	26.0
D2-517-1427-1XX	32.0	23.5	27.0
D2-517-1428-1XX	33.0	24.5	28.0
D2-517-1429-1XX	34.0	25.5	29.0
D2-517-1430-1XX	35.0	26.5	30.0
D2-517-1431-1XX	36.0	27.5	31.0
D2-517-1432-1XX	37.0	28.5	32.0
D2-517-1433-1XX	38.0	29.5	33.0
D2-517-1434-1XX	39.0	30.5	34.0
D2-517-1435-1XX	40.0	31.5	35.0
D2-517-1436-1XX	41.0	32.5	36.0
D2-517-1437-1XX	42.0	33.5	37.0
D2-517-1438-1XX	43.0	34.5	38.0
D2-517-1439-1XX	44.0	35.5	39.0
D2-517-1440-1XX	45.0	36.5	40.0
D2-517-1441-1XX	46.0	37.5	41.0
D2-517-1442-1XX	47.0	38.5	42.0

D2-517-14XX-121	STUD	CARBON STEEL	GEOMET
D2-517-14XX-130	STUD	CARBON STEEL	SILVER ORGANIC Cr6 FREE
D2-517-14XX-131	STUD	CARBON STEEL	BLACK ORGANIC Cr6 FREE
D2-517-14XX-190	STUD	CARBON STEEL	ZINC PLATE & PASSIVATE - Cr6 FREE
D2-517-14XX-191	STUD	CARBON STEEL	ZINC PLATE & BLACK PASSIVATE - Cr6 FREE
D2-517-14XX-120	STUD	CARBON STEEL	MAGNI COAT Cr6 FREE
D2-517-14XX-133	STUD	CARBON STEEL	BLACK ORGANIC Cr6 FREE
D2-517-14XX-139	STUD	CARBON STEEL	BLACK ORGANIC Cr6 FREE
PART NUMBER	TYPE OF COMPONENT	MATERIAL	FINISH

THIRD ANGLE PROJECTION				
MILLIMETERS [IN]				
SURFACE AREA	TOLERANCES UNLESS OTHERWISE NOTED	DESCRIPTION SPECIAL D2 WINGED STUD		
VOLUME	ALL DIMENSIONS WITHOUT TOLERANCES ARE FOR REFERENCE ONLY.	SIZE A3	SYSTEM NX	DWG NO. J-D2-517-14XX-1XX
PROPRIETARY ITEM <small>EXCEPT FOR USES EXPRESSLY GRANTED IN WRITING, INFORMATION DISCLOSED HEREON IS CONFIDENTIAL AND ALL RIGHTS, PATENT AND OTHERWISE, ARE RESERVED BY SOUTHCO, INC.</small>	PER ASME Y14.5M-1994	DRAWN BY GLS/DME	DATE 31AUG2010	SCALE 3:1
				SHEET 1 OF 1