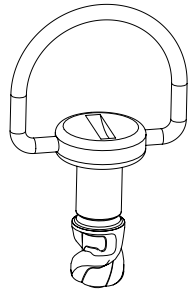
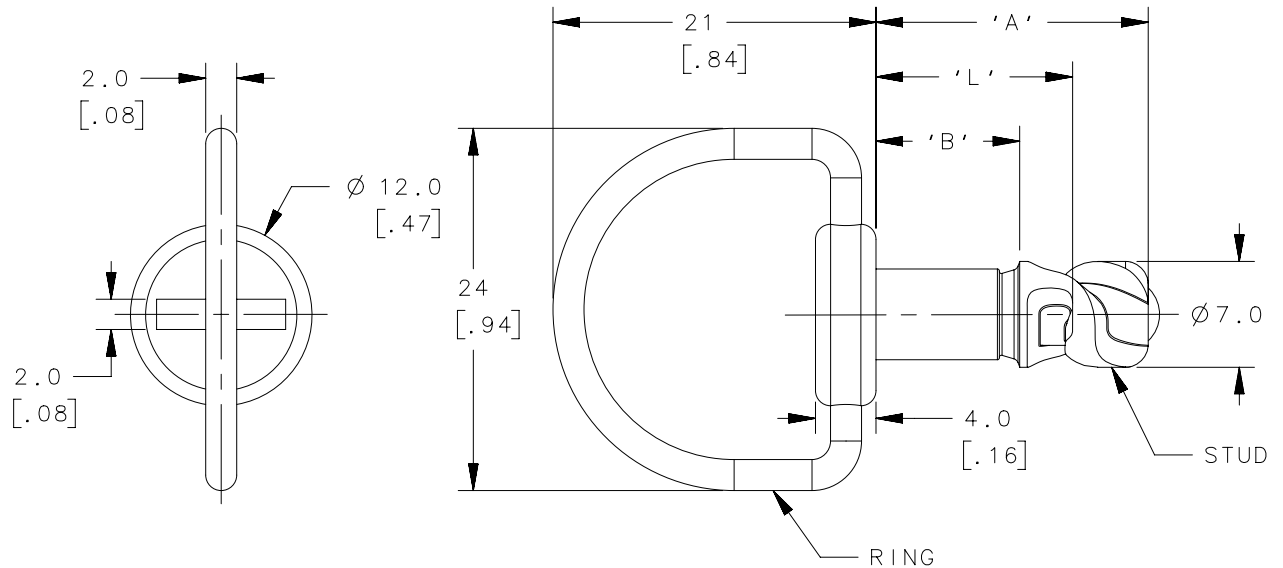


PART NUMBER	STUD DIMENSIONS		
	'A'	'B'	'L'
D2-517-409-1XX	14.0[.551]	5.5[.216]	9.0[.354]
D2-517-410-1XX	15.0[.590]	6.5[.256]	10.0[.393]
D2-517-411-1XX	16.0[.630]	7.5[.295]	11.0[.433]
D2-517-412-1XX	17.0[.669]	8.5[.335]	12.0[.472]
D2-517-413-1XX	18.0[.709]	9.5[.374]	13.0[.511]
D2-517-414-1XX	19.0[.748]	10.5[.413]	14.0[.551]
D2-517-415-1XX	20.0[.787]	11.5[.453]	15.0[.590]
D2-517-416-1XX	21.0[.827]	12.5[.492]	16.0[.630]
D2-517-417-1XX	22.0[.866]	13.5[.531]	17.0[.669]
D2-517-418-1XX	23.0[.905]	14.5[.571]	18.0[.709]
D2-517-419-1XX	24.0[.945]	15.5[.610]	19.0[.748]
D2-517-420-1XX	25.0[.984]	16.5[.649]	20.0[.787]
D2-517-421-1XX	26.0[1.024]	17.5[.688]	21.0[.827]
D2-517-422-1XX	27.0[1.063]	18.5[.728]	22.0[.866]
D2-517-423-1XX	28.0[1.102]	19.5[.767]	23.0[.905]
D2-517-424-1XX	29.0[1.142]	20.5[.807]	24.0[.945]
D2-517-425-1XX	30.0[1.181]	21.5[.846]	25.0[.984]
D2-517-426-1XX	31.0[1.220]	22.5[.886]	26.0[1.023]
D2-517-427-1XX	32.0[1.260]	23.5[.925]	27.0[1.063]
D2-517-428-1XX	33.0[1.299]	24.5[.964]	28.0[1.102]
D2-517-429-1XX	34.0[1.338]	25.5[1.004]	29.0[1.141]
D2-517-430-1XX	35.0[1.378]	26.5[1.043]	30.0[1.181]
D2-517-431-1XX	36.0[1.417]	27.5[1.082]	31.0[1.220]
D2-517-432-1XX	37.0[1.457]	28.5[1.122]	32.0[1.260]
D2-517-433-1XX	38.0[1.496]	29.5[1.161]	33.0[1.299]
D2-517-434-1XX	39.0[1.535]	30.5[1.200]	34.0[1.338]
D2-517-435-1XX	40.0[1.575]	31.5[1.240]	35.0[1.378]
D2-517-436-1XX	41.0[1.614]	32.5[1.279]	36.0[1.417]
D2-517-437-1XX	42.0[1.653]	33.5[1.319]	37.0[1.457]
D2-517-438-1XX	43.0[1.693]	34.5[1.358]	38.0[1.496]
D2-517-439-1XX	44.0[1.732]	35.5[1.398]	39.0[1.535]
D2-517-440-1XX	45.0[1.771]	36.5[1.437]	40.0[1.575]
D2-517-441-1XX	46.0[1.811]	37.5[1.476]	41.0[1.614]
D2-517-442-1XX	47.0[1.850]	38.5[1.516]	42.0[1.653]

REVISION HISTORY			
REV	DATE	BY	DESCRIPTION
A	25 OCT 2011	DMS/YGC	NEW RELEASE



REF. VIEW
SCALE 1:1



NOTES:

- MATERIAL: CARBON STEEL.
- FINISH: XX-FINISH
 30-SILVER ORGANIC-CHROME (Cr6)FREE.
 31-BLACK ORGANIC-CHROME (Cr6)FREE.
 90-ZINC AND TRIVALENT PASSIVATE.
 91-ZINC AND BLACK PASSIVATE.
- ORIENTATION OF SLOT TO CAM IS RANDOM.
- STANDARD PANEL PREPARATION
 $\varnothing 7.2[.28] / \varnothing 7.0[.27]$.

	THIRD ANGLE PROJECTION					<h1>southco®</h1> CONNECT • CREATE • INNOVATE				
	MILLIMETERS [IN]									
	TOLERANCES UNLESS OTHERWISE NOTED	DESCRIPTION #7 RAPIER STUD FINISHED								
	ALL DIMENSIONS WITHOUT TOLERANCES ARE FOR REFERENCE ONLY.	SIZE A4	SYSTEM NX	DWG NO. J-D2-517-4XX-1XX		DRAWN BY DMS/YGC		DATE 21 OCT 2011	SCALE 2:1	SHEET 1 OF 1
<small>PROPRIETARY ITEM EXCEPT FOR USES EXPRESSLY GRANTED IN WRITING, INFORMATION DISCLOSED HEREON IS CONFIDENTIAL AND ALL RIGHTS, PATENT AND OTHERWISE, ARE RESERVED BY SOUTHCO, INC.</small>	PER ASME Y14.5M-1994									