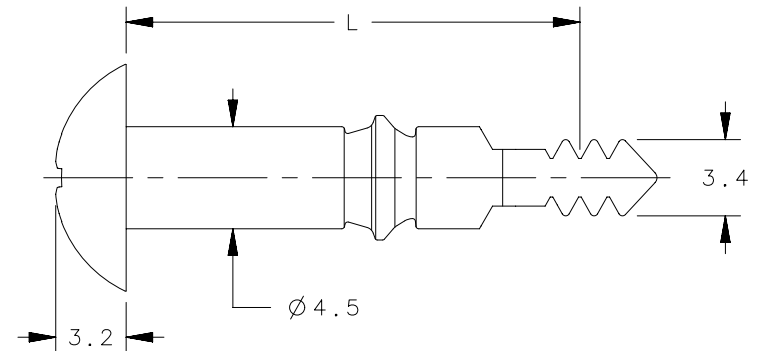
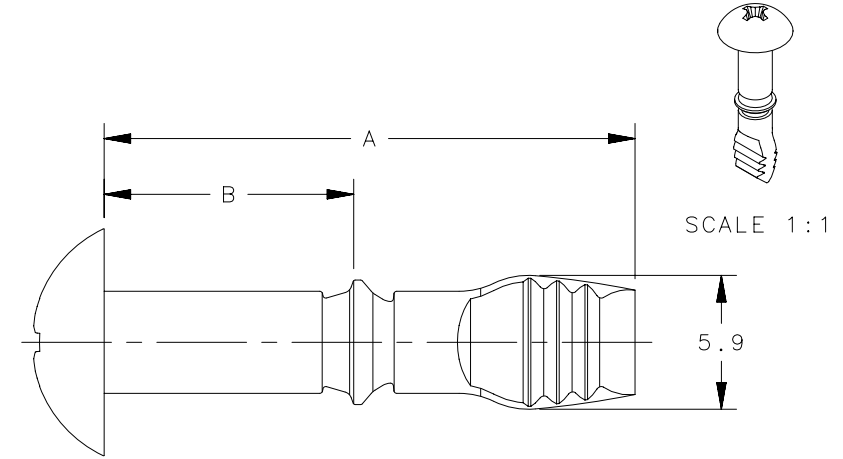
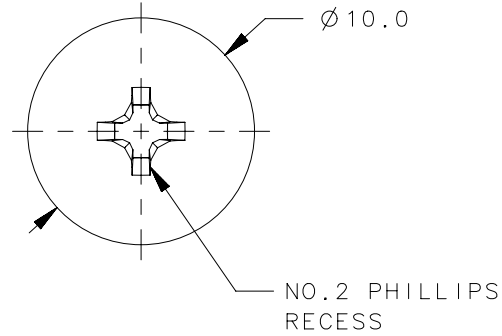
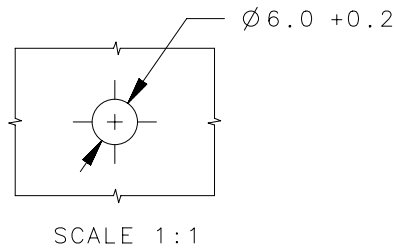


REVISION HISTORY			
REV	DATE	BY	DESCRIPTION
C	25JAN2018	ANT/MGG	PRN: P2018-0187

PANEL PREPRATION



XXX	MATERIAL	FINISH
190	STEEL	ZINC PLATE, CHROMATE DIP
191	STEEL	ZINC PLATE, BLACK CHROMATE
131	STEEL	ZINC PLATE, BLACK POLYMER
151	STEEL	BLACK XYLAN XL

PART NUMBERS

D7-265-7YY-XXX

BASIC PART NUMBER

DENOTES "L" DIMENSION

DENOTES MATERIAL AND FINISH

YY	"L"	"B"	"A"
16	16.0	7.0	19.4
18	18.0	9.0	21.4
20	20.0	11.0	23.4
22	22.0	13.0	25.4
24	24.0	15.0	27.4
26	26.0	17.0	29.4
28	28.0	19.0	31.4
30	30.0	21.0	33.4
32	32.0	23.0	35.4
34	34.0	25.0	37.4
36	36.0	27.0	39.4
37	37.0	28.0	40.4
38	38.0	29.0	41.4
40	40.0	31.0	43.4
42	42.0	33.0	45.4
44	44.0	35.0	47.4

		THIRD ANGLE PROJECTION		 CONNECT • CREATE • INNOVATE	
		MILLIMETERS [IN]			
SURFACE AREA		TOLERANCES UNLESS OTHERWISE NOTED		DESCRIPTION PILOT STUD	
VOLUME		ALL DIMENSIONS WITHOUT TOLERANCES ARE FOR REFERENCE ONLY.		SIZE A4	SYSTEM NX
PROPRIETARY ITEM <small>EXCEPT FOR USES EXPRESSLY GRANTED IN WRITING, INFORMATION DISCLOSED HEREON IS CONFIDENTIAL AND ALL RIGHTS, PATENT AND OTHERWISE, ARE RESERVED BY SOUTHCO, INC.</small>		PER ASME Y14.5M-1994		DWG NO. J-D7-265-7	
		DRAWN BY SRK	DATE 01FEB2006	SCALE 3:1	SHEET 1 OF 1