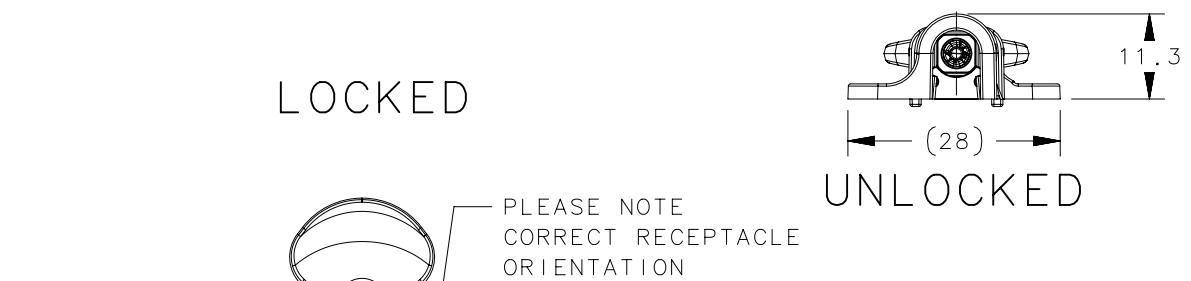
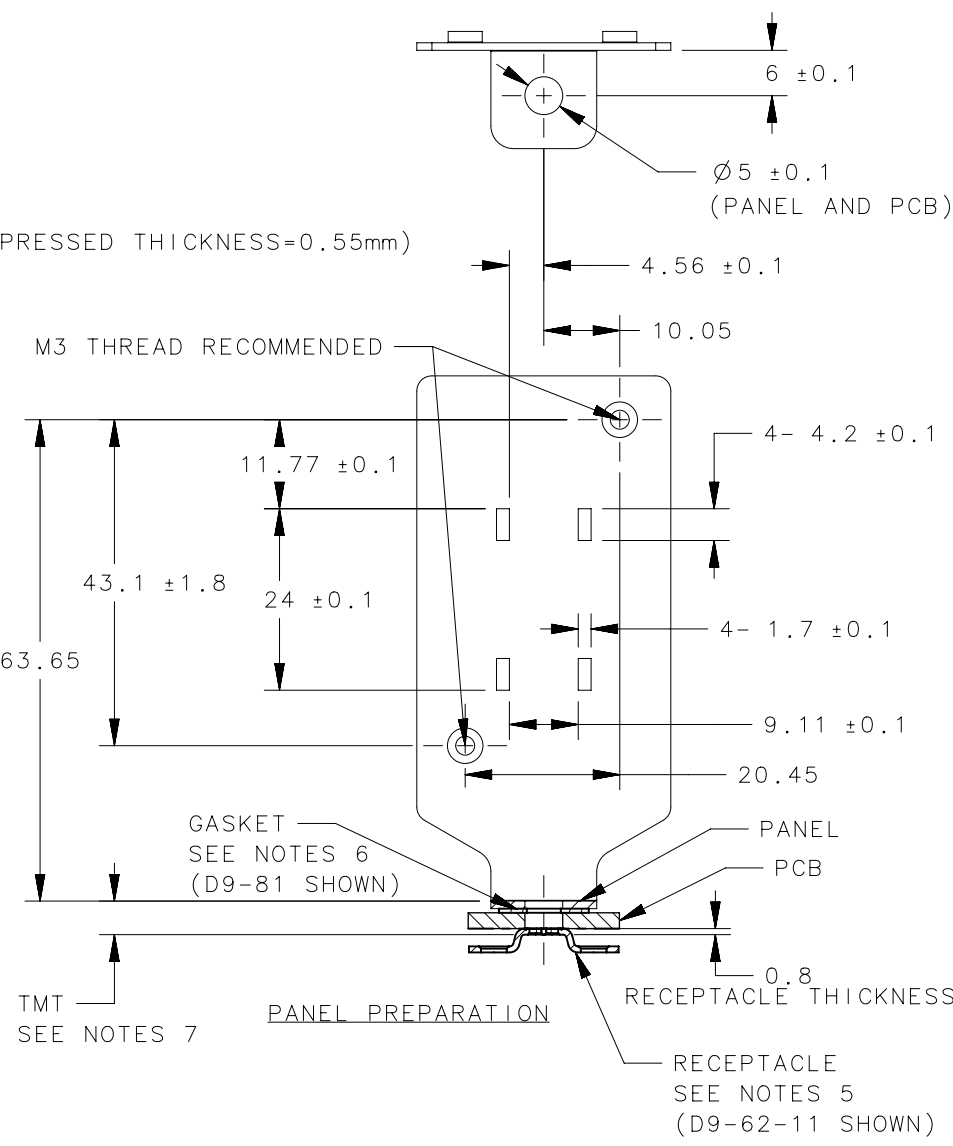
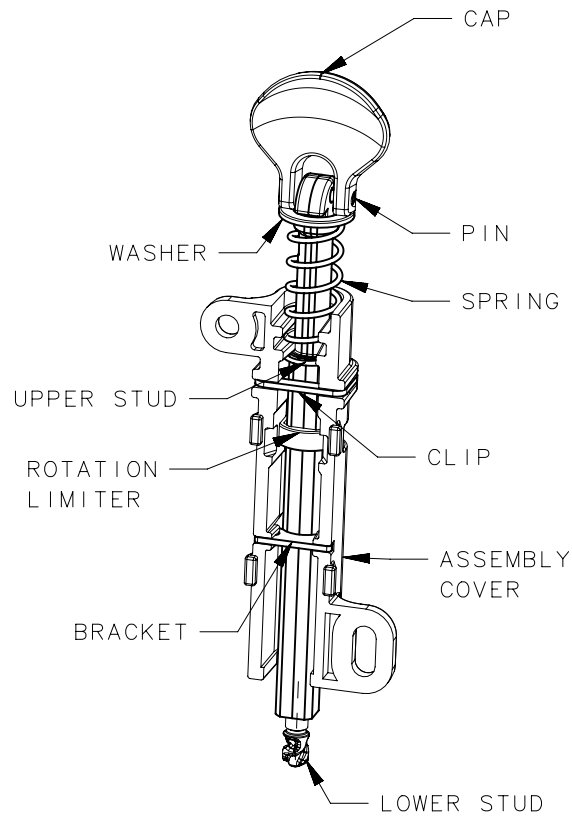
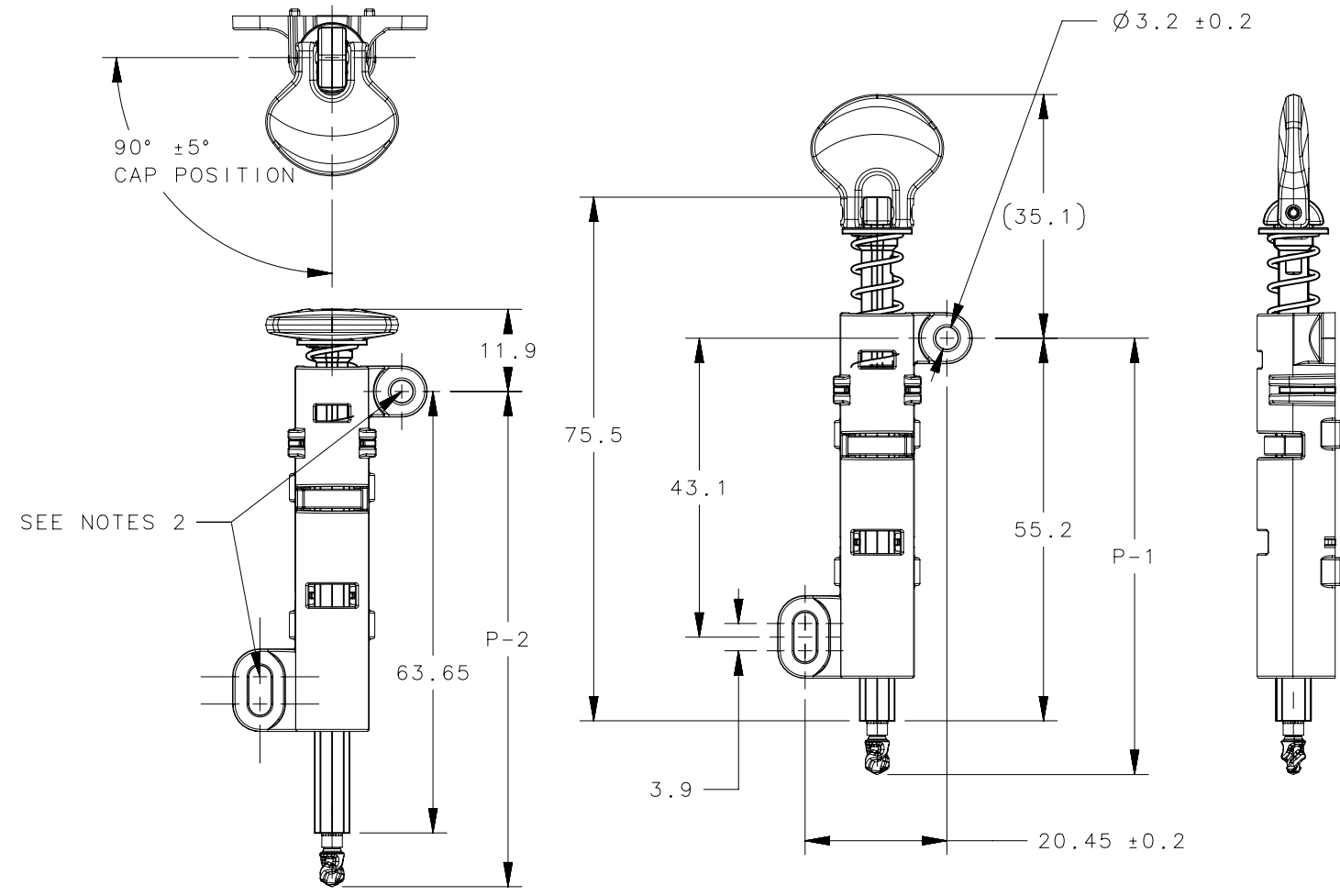


NOTES:

1. ASSEMBLY AND ALL ITS COMPONENTS ARE RoHS COMPLIANT.
2. MAXIMUM INSTALLATION TORQUE ALLOWED TO ATTACH COVER SCREWS IS 0.7 Nm (6 IN-LBS) AND M3 THREAD RECOMMENDED. AND DO NOT SUGGEST TO USE FLAT HEAD SCREW OR OVAL HEAD SCREW.
3. MAXIMUM TORQUE APPLICABLE TO BAIL 1.1 Nm (10 IN-LBS).
4. COSMETIC SPECIFICATION:  
ALL SURFACES ON BAIL CAP AND COVER VISIBLE AFTER INSTALLATION INTO SERVER ARE TO BE CLASS "B". ALL OTHER SURFACES ARE TO CONFORM TO A CLASS "C" DESIGNATION AS DESCRIBED IN SOUTHCO COSMETIC SPECIFICATIONS: S-121.
5. SOUTHCO RECEPTACLE D9-61-11, D9-62-11 OR D9-63-11 ORDERED SEPARATELY. SEE J-D9-61, J-D9-62 OR J-D9-63 FOR DETAIL DIMENSIONS.
6. SOUTHCO GASKET D9-81 ORDERED SEPARATELY, SEE J-D9-81 FOR DETAIL DIMENSIONS.
7. TMT=CUSTOMER PANEL THICKNESS+CUSTOMER PCB THICKNESS+SOUTHCO RECEPTACLE THICKNESS+SOUTHCO GASKET COMPRESSED THICKNESS (COMPRESSED THICKNESS=0.55mm)
8. TO FASTEN, PUSH ON CAP TO PLACE LOWER STUD INTO RECEPTACLE AND TURN CAP 180° AND FOLD DOWN.

REVISION HISTORY			
REV	DATE	BY	DESCRIPTION
B	19OCT2022	DL/ED	PRN:P2022-1850



ASSEMBLY PART NUMBER	"EEE" CAP COLOR	TMT	P-1	P-2
D9-PR-20-EEE	000=BLACK , 072=BLUE FOR ADDITIONAL COLORS SEE J-47-0-3	4.25	62.4+/-1.2	70.9+/-1.2
D9-PR-21-EEE		4.45	62.6+/-1.2	71.1+/-1.2
D9-PR-22-EEE		4.65	62.8+/-1.2	71.3+/-1.2

TYPE OF COMPONENT	MATERIAL	FINISH/COLOR
WASHER	STAINLESS STEEL	PASSIVATE
ROTATION LIMITER	ZAMAK 3	CHROMATE SEALER
CAP	UL94-V0 PA6	PANTONE 279C
ASSEMBLY COVER	PC-ABS	BLACK
SPRING	MUSIC WIRE	ZINC PLATE
LOWER STUD	STEEL	ZINC PLATE
UPPER STUD	ZAMAK 3	CHROMATE SEALER
BRACKET	STEEL	NATURAL
PIN	STAINLESS STEEL	PASSIVATE
CLIP	STEEL	ZINC PLATE
TYPE OF COMPONENT	MATERIAL	FINISH/COLOR

THIRD ANGLE PROJECTION

MILLIMETERS [IN]

TOLERANCES UNLESS OTHERWISE NOTED

ALL DIMENSIONS WITHOUT TOLERANCES ARE FOR REFERENCE ONLY.

PER ASME Y14.5M-1994

PROPRIETARY ITEM  
EXCEPT FOR USES EXPRESSLY GRANTED IN WRITING, INFORMATION DISCLOSED HEREON IS CONFIDENTIAL AND ALL RIGHTS, PATENT AND OTHERWISE, ARE RESERVED BY SOUTHCO, INC.

D9-PR		PCI RISER ASSEMBLY	
PART NUMBER		TYPE OF COMPONENT	
<b>southco</b> CONNECT · CREATE · INNOVATE			
DESCRIPTION QUICK ACCESS FASTENER PCI LOCKDOWN ASSEMBLY			
SIZE A3	SYSTEM NX	DWG NO. J-D9-PR	
DRAWN BY DL	DATE 21DEC2020	SCALE 1:1	SHEET 1 OF 1