

SOUTHCO, INC.
CONCORDVILLE, PA.

SOUTHCO NO E2 HIDDEN LATCHING SYSTEM
NEAR EDGE LATCHING, FLOATING KEEPER ASS'LY

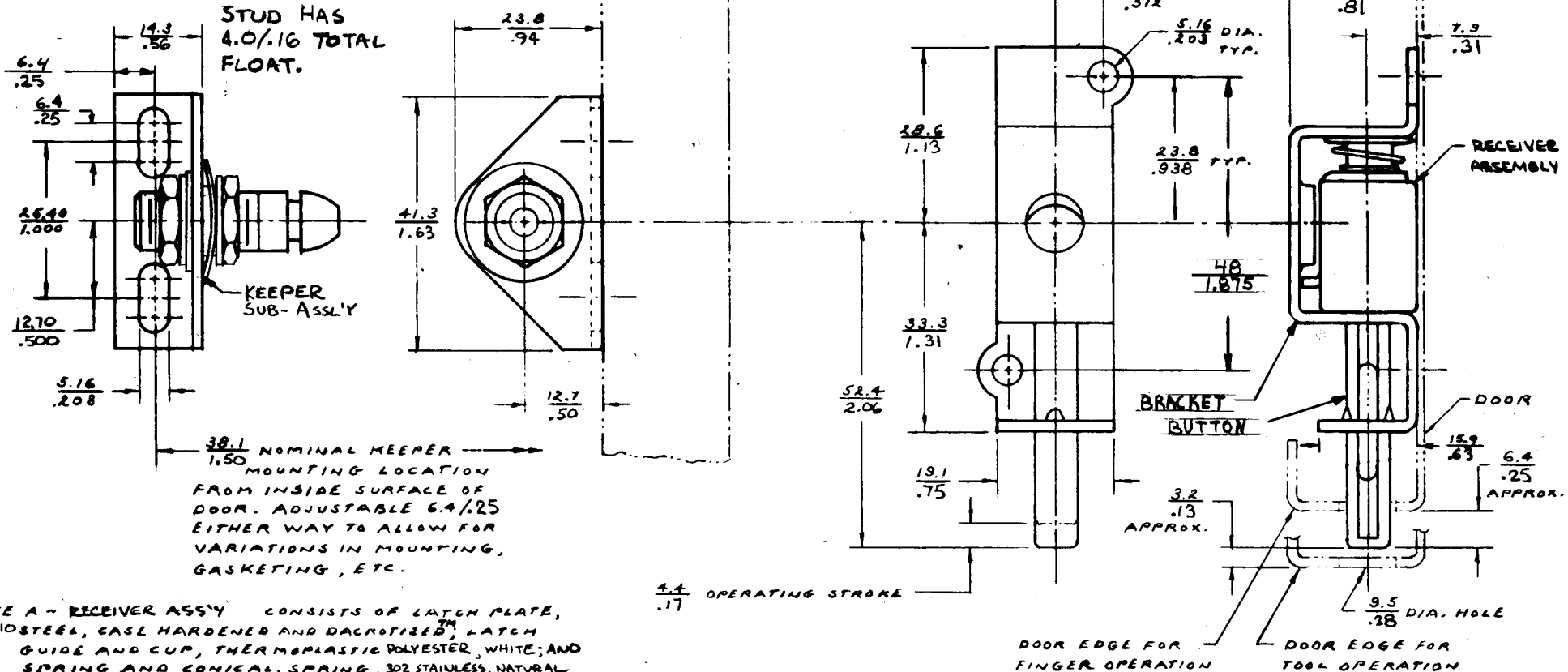
DATE	DRAWN	CHKD	SCALE	DRAWING NUMBER
10-2-87	RES		NTS	J-E2-50-101-20

REV. LET.	DATE	BY-CHKD	REVISIONS	ITEM	COMPONENT	PART NUMBER	QTY	MATERIAL	FINISH	REMARKS
A	1-28-88	MAJ	PRN 62-245 (DAC.NUTS)	ASSEMBLY	—	E2-50-101-20	—	—	—	
B	6-14-89	CLB	PRN E2-30		BRACKET	—	1	1010 STEEL	DACROTIZED™	
C	4 MAY 92	MVF	PRN E2-41		RECEIVER ASSY	—	1	SEE NOTE A THERMOPLASTIC POLYESTER	SEE NOTE A WHITE	SHIPPED PACKAGED TOGETHER
D	12 JAN 93	JG	PRN S-1-03		BUTTON	—	1	SEE NOTE B	SEE NOTE B	
					KEEPER SUB-ASS'LY	—	1	SEE NOTE B	SEE NOTE B	

COMPONENTS PACKAGED BULK, SHIPPED SEPARATELY

KEEPER STUD SLIDES IN PLANE OF KEEPER BRACKET SHELF TO ACCOMODATE VARIATIONS IN MOUNTING AND SHIFTING OF CABINET AFTER ASSEMBLY.

FOR BEST RESULTS MOUNT KEEPER BRACKET AT NOMINAL DIMENSIONS.



38.1 NOMINAL KEEPER MOUNTING LOCATION FROM INSIDE SURFACE OF DOOR. ADJUSTABLE 6.4/.25 EITHER WAY TO ALLOW FOR VARIATIONS IN MOUNTING, GASKETING, ETC.

NOTE A - RECEIVER ASS'Y CONSISTS OF LATCH PLATE, 1010 STEEL, CASE HARDENED AND DACROTIZED™; LATCH GUIDE AND CUP, THERMOPLASTIC POLYESTER, WHITE; AND SPRING AND CONICAL SPRING, 302 STAINLESS, NATURAL

NOTE B - KEEPER SUB-ASS'Y CONSISTS OF KEEPER BRACKET, 1010 STEEL, DACROTIZED™; STUD, LOW CARBON STEEL, CASE HARDENED, DACROTIZED™; EYELET, LOW CARBON STEEL, DACROTIZED™; 2 NUTS, STEEL, DACROTIZED™ PLUS CLEAR ORGANIC COATING; 2 LOCKWASHERS AND SPRING WASHER, SPRING STEEL, ENK PLATE PLUS CHROMATE DIP, YELLOW

4.4 OPERATING STROKE
.17

INSTALLATION INSTRUCTIONS:
ATTACH THE BRACKET TO THE INSIDE OF THE DOOR USING WELDS, SCREWS OR NUTS. THE DOOR MAY BE PAINTED AFTER THE BRACKET IS INSTALLED. SLIDE THE RECEIVER ASSEMBLY INTO THE BRACKET BY FITTING IT AND INSERTING THE SPRING END FIRST WITH THE ROUNDED END OUT, SNAP THE BUTTON INTO THE BRACKET. INSTALL AND ADJUST THE KEEPER FOR PROPER OPERATION.

TM DIAMOND SHAMROCK CORP.

DIMENSIONS IN MILLIMETER / INCH

PAT. 4,597,599

DRAWING NUMBER

J-E2-50-101-20

PROPRIETARY ITEM - EXCEPT FOR USE EXPRESSLY GRANTED IN WRITING, INFORMATION DISCLOSED HEREON IS CONFIDENTIAL AND ALL RIGHTS, PATENT AND OTHERWISE, ARE RESERVED BY SOUTHCO, INC.