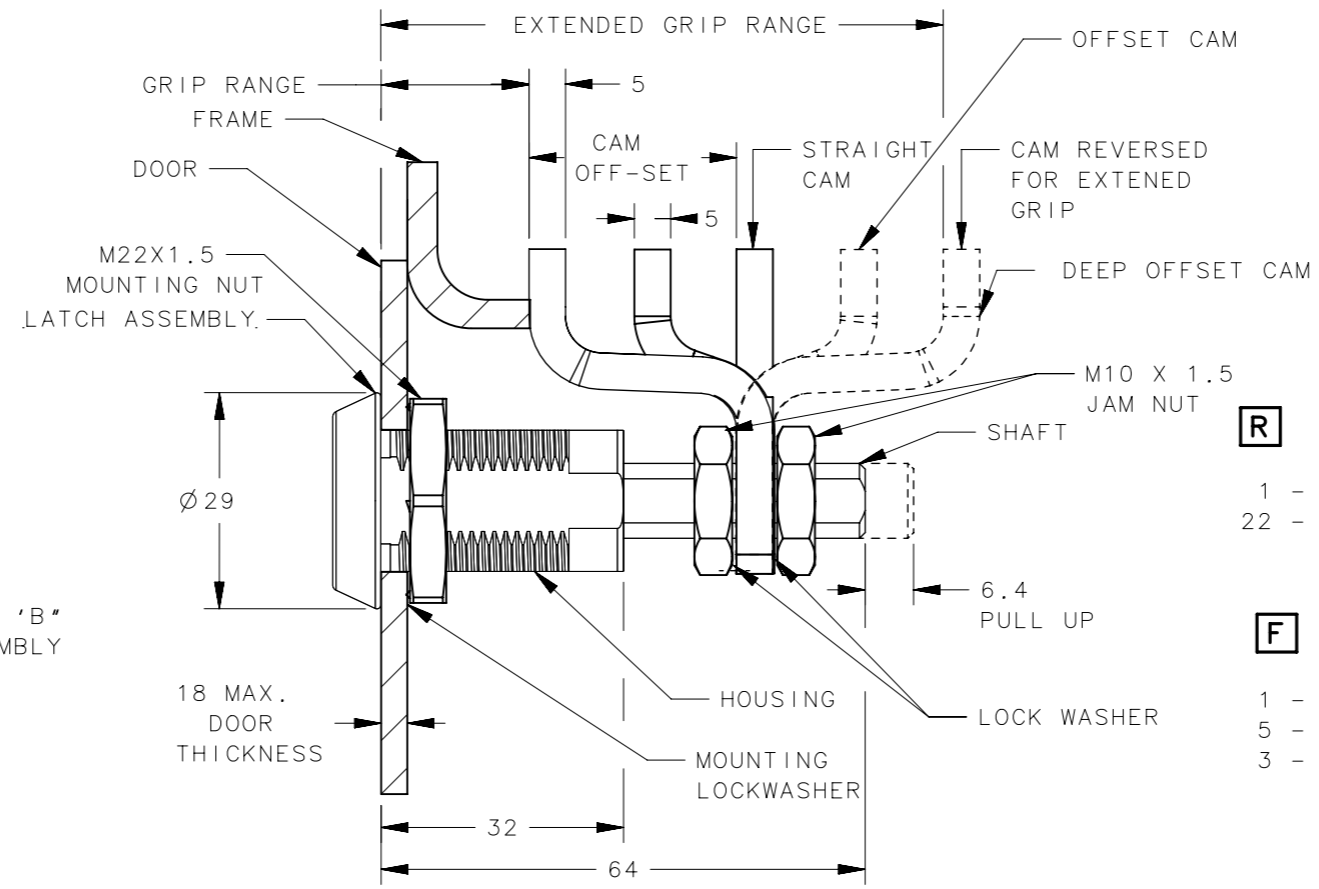
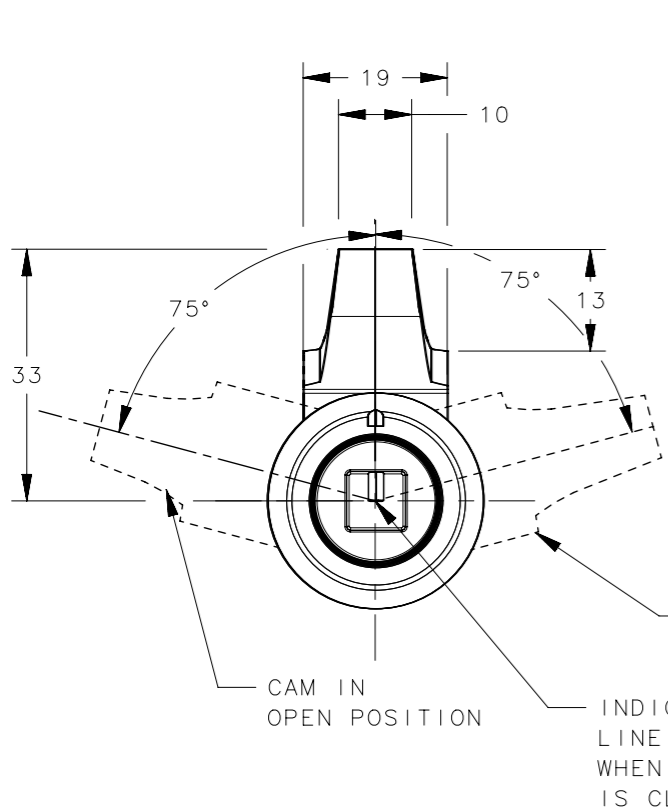


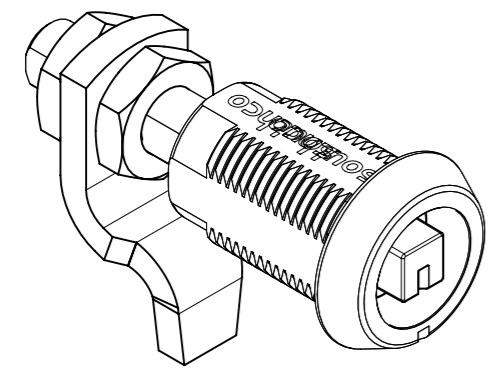
REVISION HISTORY			
REV	DATE	BY	DESCRIPTION
C	19MAR2024	PBJ/VK	PRN: P2024-0506



STANDARD PART NUMBER

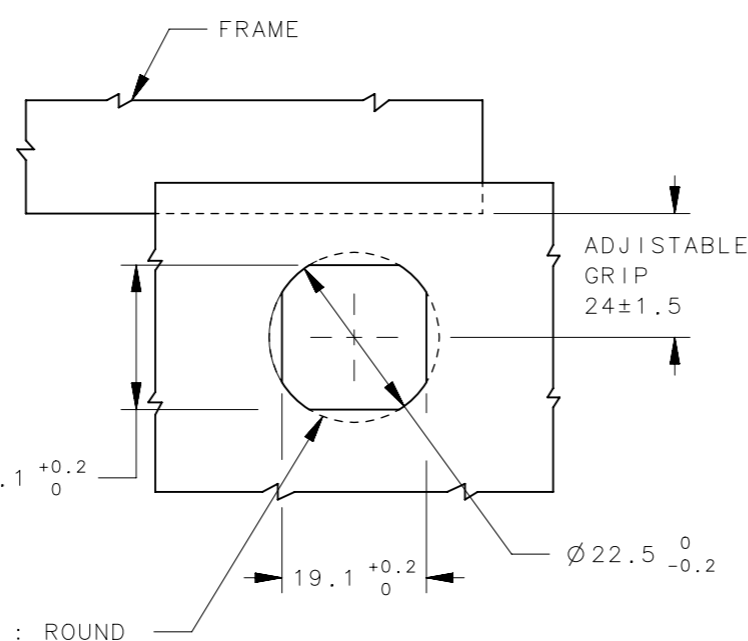
E3 - **R** **H** - **G** **F**

- R** - ROTATION
 1 - CLOCKWISE (TYPE A)
 22 - COUNTER CLOCKWISE (TYPE B)
- G** - GRIP
 1 - DEEP OFFSET CAM
 2 - OFFSET CAM
 3 - STRIGHT CAM
- F** - FINISH
 1 - CHROME PLATED
 5 - BLACK POWDER COATED
 3 - SILVER POWDER COATED
- SEE TABLE FOR GRIP RANGE AND CAM OFFSET



SCALE 1:1

PANEL PREPARATION



- NOTES:
- OPERATION: 195° TURN OF DRIVER CAUSES CAM TO ROTATE THEN PULL UP 6.4mm.
 - CAM, NUTS AND LOCKWASHER SHIPPED UNASSEMBLED IN BAG WITH LATCH ASSEMBLY.
 - INSTALLATION:
 - INSERT LATCH INTO THE HOLE IN THE DOOR IN THE UNLATCHED POSITION. CHECK FOR PROPER ORIENTATION AND OPERATION OF CAM.
 - INSTALL LOCKWASHER AND MOUNTING NUT (27mm ACROSS FLATS) MAX TIGHTENING TORQUE 20 N/m
 - PLACE THE JAM NUTS, LOCKWASHERS AND CAM 19.1 +0.2/0 ONTO THE SHAFT. WITH LATCH IN CLOSED POSITION, ADJUST JAM NUTS TO POSITION PAWL AT CORRECT GRIP, MAX TIGHTEN TORQUE 20 Nm.
 - CAUTION: ADJUST CAM SO THAT NO MORE THAN 7.9Nm TORQUE ON KEY IS REQUIRED TO CLOSE LATCH.

OPTIONAL : ROUND HOLE INSTALLATION WITH SPUR WASHER

CAM PART NUMBER AND GRIP RANGE			
GRIP STYLE	DEEP OFFSET CAM	OFFSET CAM	STRIGHT CAM
CAM ORIENTATION - FORWARD	11.4 - 27.2	25.4 - 41.1	38.9 - 54.6
CAM ORIENTATION - REVERSE	66.3 - 76.2	52.6 - 68.3	
MAX OUTER DOOR THICKNESS	18	18	18

QTY	TYPE OF COMPONENT	MATERIAL	FINISH	USED IN
1	KNOB	DIE CAST ZINC	SEE FINISH TABLE	KNOB OPERATED HEAD STYLES ONLY
1	KEYS	BRASS	NATURAL	LOCKING T- HANDLE STYLE ONLY
1	LOCK ASSEMBLY	ZINC ALLOY AND BRASS	SEE FINISH TABLE	LOCKING T- HANDLE STYLE ONLY
1	BUSHING	ALUMINUM	SEE FINISH TABLE	TUBULER KEY DRIVE HEAD STYLE ONLY
1	HANDLE	ZINC ALLOY	SEE FINISH TABLE	ALL T-HANDLE STYLES
1	CAP	ZINC ALLOY	SEE FINISH TABLE	ALL EXCEPT KNOB OPERATED AND T- HANDLE HEAD STYLES
1	HOUSING	ZINC ALLOY	SEE FINISH TABLE	ALL
1	RETAINER	STAINLESS STEEL	NATURAL	ALL
1	SPRING	STAINLESS STEEL	NATURAL	ALL
1	O RING	RUBBER	NATURAL	ALL
1	SLEEVE	STEEL	ZINC CHROMATE COATING PLUS SEALER	ALL
1	INTERNAL CAM	STEEL	ZINC CHROMATE COATING PLUS SEALER	ALL
1	SHAFT	STEEL	ZINC CHROMATE COATING PLUS SEALER	ALL
1	PIN	STEEL	ZINC PLATE, PLUS CHROMATE DIP, YELLOW	ALL
1	CAM	STEEL	ZINC PLATE, CHROMATE PLUS SEALER	ALL
2	JAM NUTS	STEEL	ZINC CHROMATE COATING PLUS SEALER	ALL
2	LOCKWASHER	STEEL	ZINC CHROMATE COATING PLUS SEALER	ALL
1	MOUNTING NUT	ZINC ALLOY	ZINC CHROMATE COATING PLUS SEALER	ALL
1	MOUNTING LOCKWASHER	STEEL	ZINC CHROMATE COATING PLUS SEALER	ALL

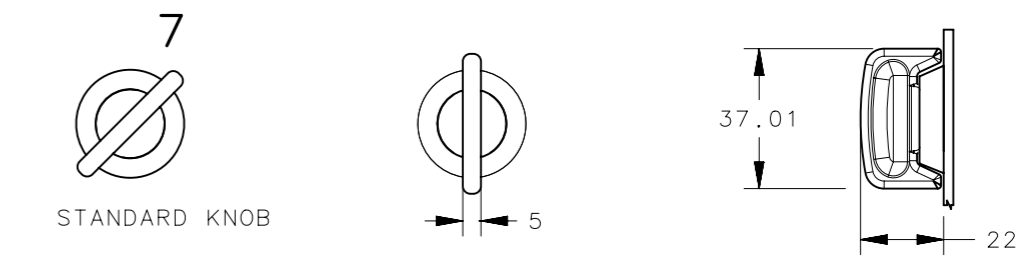
CPB NUMBER	STANDARD	THIRD ANGLE PROJECTION		
SURFACE AREA	MILLIMETERS [IN]			
VOLUME	TOLERANCES UNLESS OTHERWISE NOTED		DESCRIPTION	
PROPRIETARY ITEM	ALL DIMENSIONS WITHOUT TOLERANCES ARE FOR REFERENCE ONLY.		E3 VISE-ACTION LATCH ZINC, ADJUSTABLE GRIP	
EXCEPT FOR USES EXPRESSLY GRANTED IN WRITING, INFORMATION DISCLOSED HEREON IS CONFIDENTIAL AND ALL RIGHTS, PATENT AND OTHERWISE, ARE RESERVED BY SOUTHCO, INC.	PER ASME Y14.5M-2009	SIZE A3	SYSTEM NX	DWG NO. J-E3-1
	DRAWN BY SBK	DATE 09JUN2023	SCALE 1:1	SHEET 1 OF 2

REVISION HISTORY			
REV	DATE	BY	DESCRIPTION
C	19MAR2024	PBJ/VK	PRN: P2024-0506

H - HEAD STYLE

STANDARD KNOB STYLE

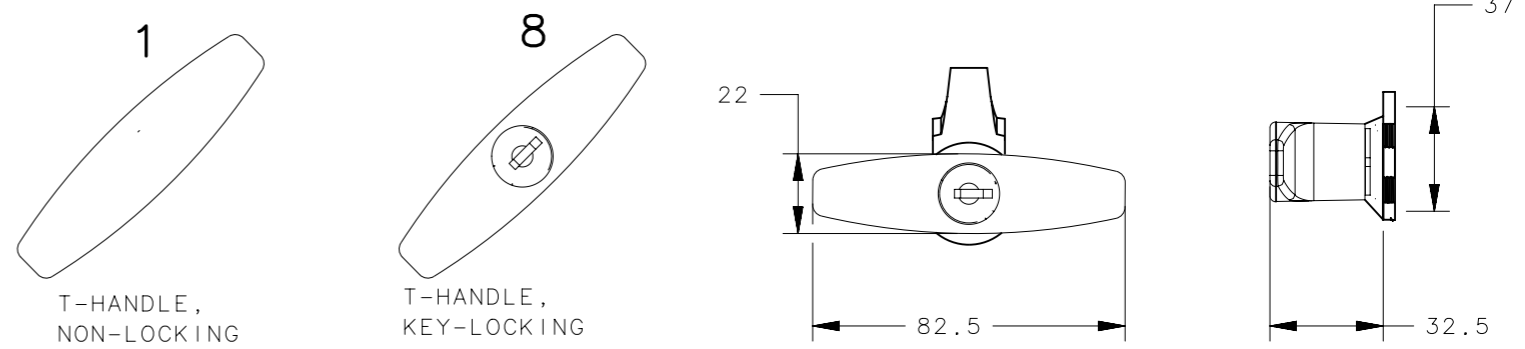
TOOL OPERATED STYLE



STANDARD KNOB

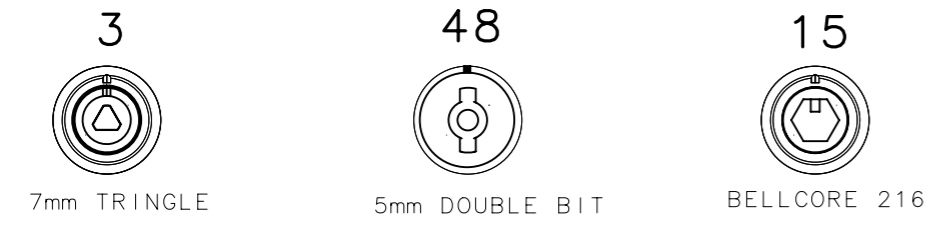


T - HANDLE STYLE

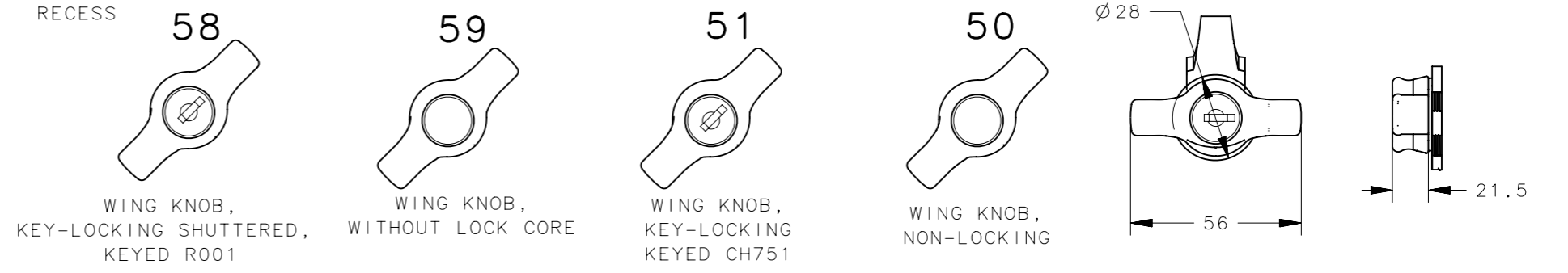


T-HANDLE, NON-LOCKING

T-HANDLE, KEY-LOCKING



WING KNOB STYLE

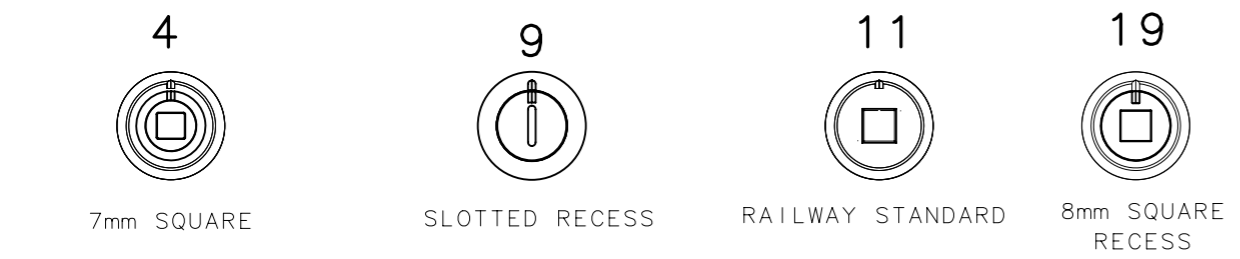


WING KNOB, KEY-LOCKING SHUTTERED, KEYED R001

WING KNOB, WITHOUT LOCK CORE

WING KNOB, KEY-LOCKING KEYED CH751

WING KNOB, NON-LOCKING

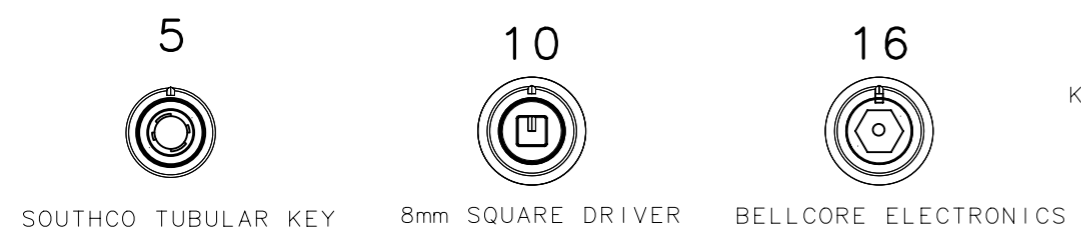


7mm SQUARE

SLOTTED RECESS

RAILWAY STANDARD

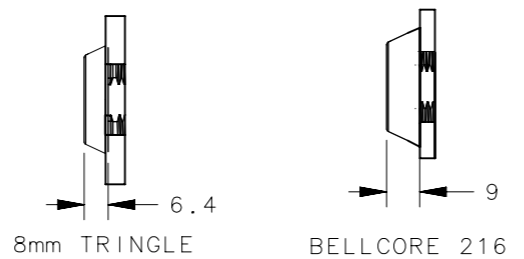
8mm SQUARE RECESS



SOUTHCO TUBULAR KEY

8mm SQUARE DRIVER

BELLCORE ELECTRONICS



8mm TRINGLE

BELLCORE 216

NOTES:
 1. ALL TOOL OPERATED HEAD STYLES ARE 6.4 THICK, EXCEPT RAILWAY STANDARD AND BELLCORE 216 ARE 9 THICK.

CPB NUMBER	STANDARD	THIRD ANGLE PROJECTION			
SURFACE AREA		MILLIMETERS [IN]			
VOLUME		TOLERANCES UNLESS OTHERWISE NOTED	DESCRIPTION		
PROPRIETARY ITEM		ALL DIMENSIONS WITHOUT TOLERANCES ARE FOR REFERENCE ONLY.	E3 VISE-ACTION LATCH ZINC, ADJUSTABLE GRIP		
EXCEPT FOR USES EXPRESSLY GRANTED IN WRITING, INFORMATION DISCLOSED HEREON IS CONFIDENTIAL AND ALL RIGHTS, PATENT AND OTHERWISE, ARE RESERVED BY SOUTHCO, INC.		PER ASME Y14.5M-2009	SIZE A3	SYSTEM NX	DWG NO. J-E3-1
			DRAWN BY SBK	DATE 09JUN2023	SCALE 1:2 SHEET 2 OF 2