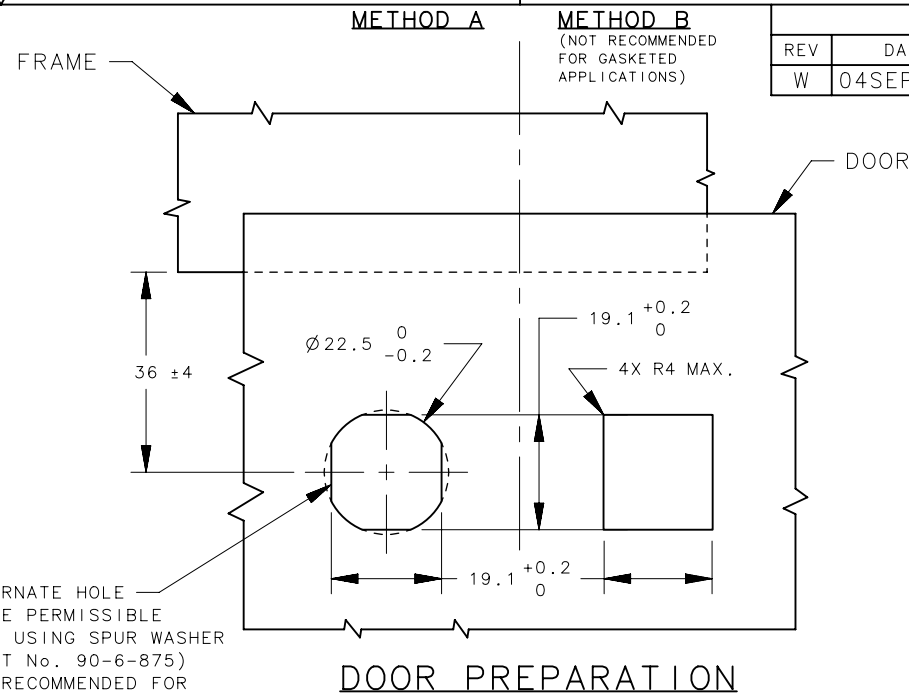
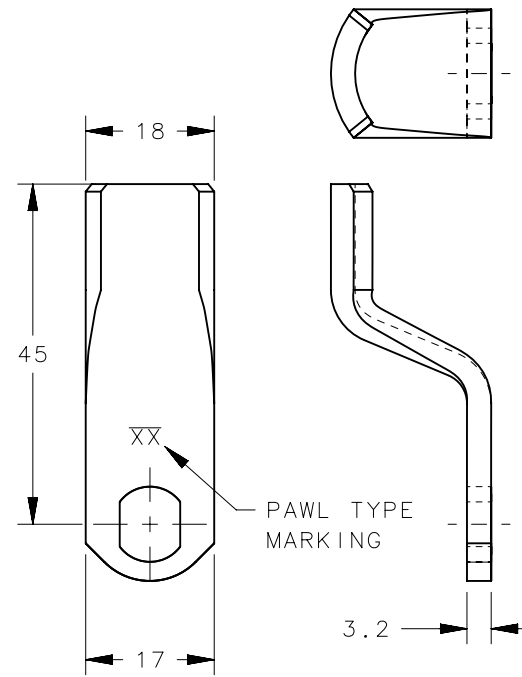


- NOTES:
- OPERATION: 195° TURN OF DRIVER OR KEY CAUSES PAWL TO ROTATE THEN PULL UP AS SHOWN.
 - DETERMINE TOTAL GRIP BY ADDING MAX. OUTER DOOR THICKNESS (INCLUDE ALL ACCESSORIES) PLUS COMPRESSED GASKETS AND FRAME THICKNESS.
 - FIND YOUR TOTAL GRIP IN PAWL TABLE TO DETERMINE THE CORRECT PAWL TYPE.
 - INSTALLATION:
 - INSERT LATCH INTO THE HOLE OF THE DOOR IN THE UNLATCHED POSITION. CHECK FOR PROPER ORIENTATION AND OPERATION OF PAWL.
 - INSTALL LOCKWASHER AND MOUNTING NUT (27mm ACROSS FLATS) ONTO HOUSING. RECOMMENDED TIGHTENING TORQUE FOR MOUNTING NUT IS 20Nm AND THE MOUNTING SCREW IS 10Nm.
 - THIS STYLE CANNOT ACCOMMODATE MULTI-POINT LATCHING.
 - FOR GRIP LENGTHS LESS THAN 15mm, SEE DWG. J-E3-10-1
 - FOR SEALED APPLICATIONS USE GASKET E5-17 (ORDERED SEPARATELY)
 - SEE SHEET 2 FOR DRIVER AND HEAD STYLES

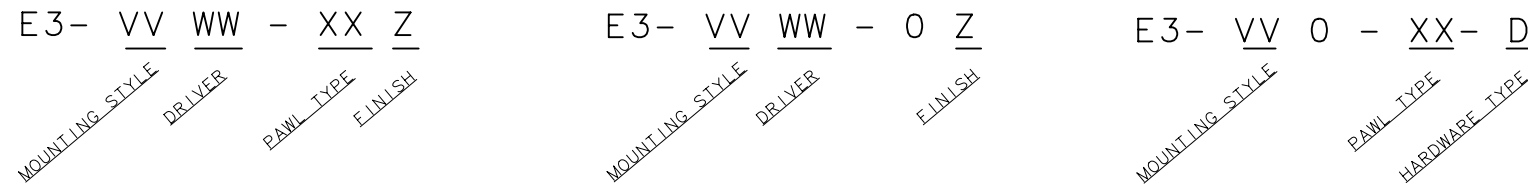


REVISION HISTORY					
REV	DATE	BY	DESCRIPTION		
W	04SEP2024	SAK/DMS	PRN: P2024-1513		

TOTAL GRIP	MAX. OUTER DOOR THICKNESS (LATCH SHIPPED ASSEMBLED)	PAWL TYPE (XX)	TOTAL GRIP	MAX. OUTER DOOR THICKNESS (LATCH SHIPPED ASSEMBLED)	PAWL TYPE (XX)
15	MUST USE UNASSEMBLED LATCH	00	35	7	10
17	MUST USE UNASSEMBLED LATCH	01	37	7	11
19		02	39	7	12
21		03	41	7	13
23		04	43	7	14
25		05	45	7	15
27		06	47	7	16
29		07	49	7	17
31		08	51	7	18
33		09	53	7	19

- MOUNTING STYLE - VV**
- 10 - LATCH SHIPPED ASSEMBLED, TYPE A (TURN CLOCKWISE TO LATCH)
 - 12 - LATCH SHIPPED UNASSEMBLED, TYPE A (TURN CLOCKWISE TO LATCH)
 - 27 - LATCH SHIPPED ASSEMBLED, TYPE B (TURN COUNTERCLOCKWISE TO LATCH)
 - 29 - LATCH SHIPPED UNASSEMBLED, TYPE B (TURN COUNTERCLOCKWISE TO LATCH)

ASSEMBLY PART NUMBER SUBASSEMBLY PART NUMBER HARDWARE PACKAGE

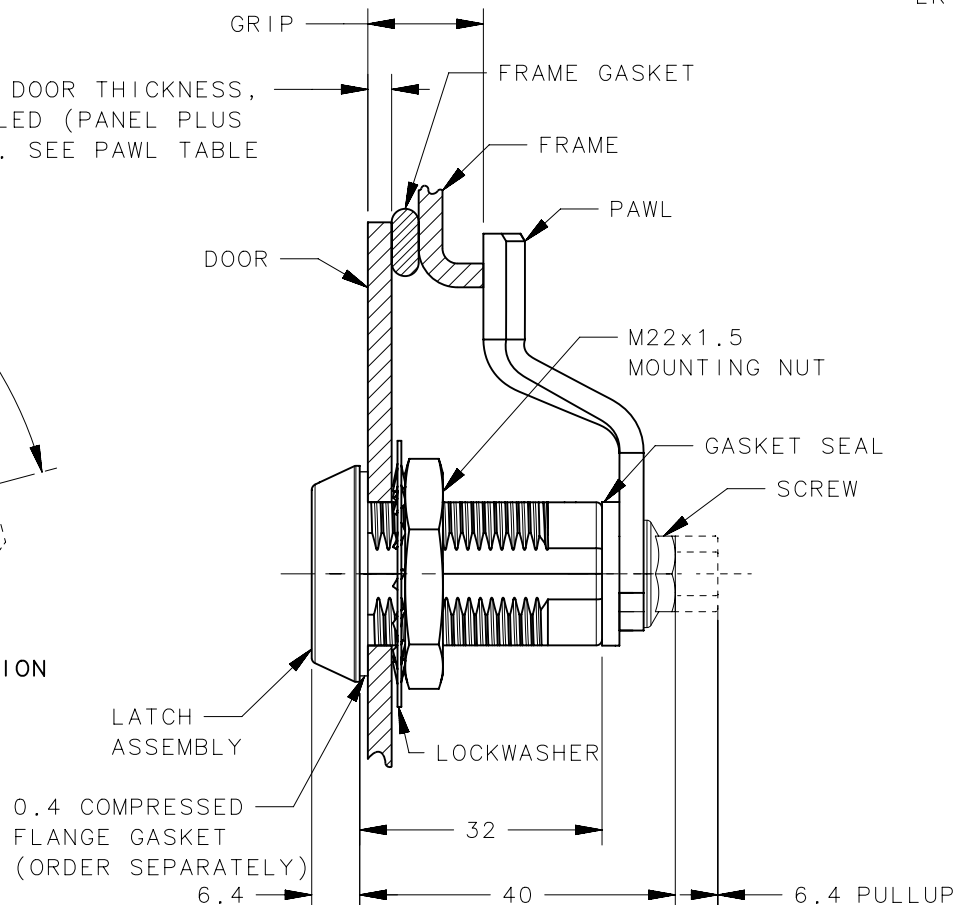
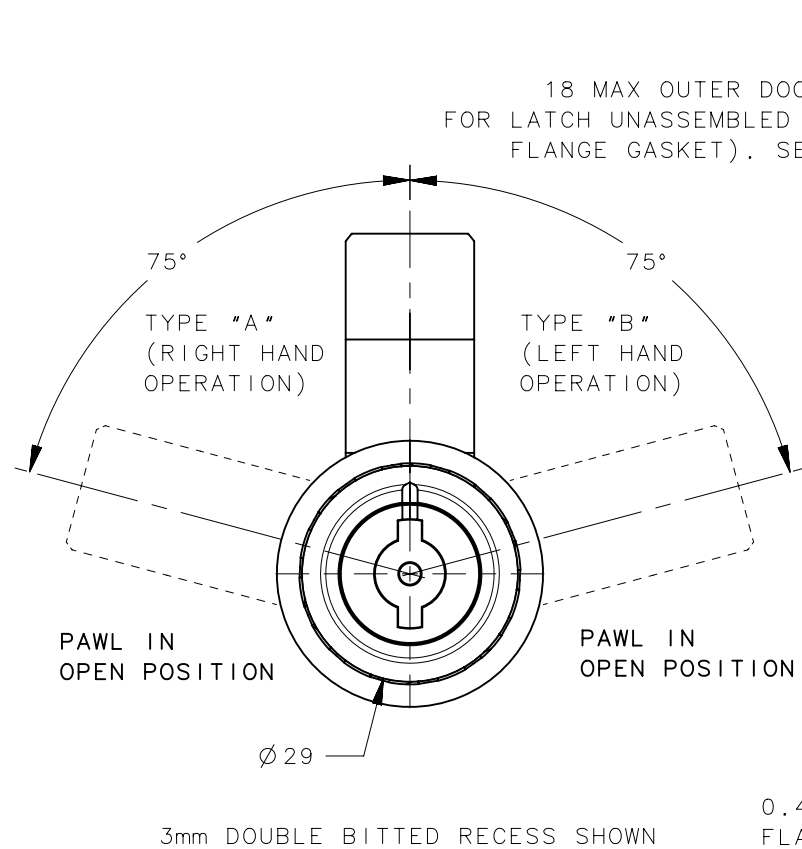


HARDWARE TYPE

- 7 - WHEN MOUNTING STYLE IS "SHIPPED ASSEMBLED" (VV=10 OR 27)
- 8 - WHEN MOUNTING STYLE IS "SHIPPED UNASSEMBLED" (VV=12 OR 29)
- 30 - WHEN MOUNTING STYLE IS "SHIPPED UNASSEMBLED" WITH MTG. NUT, LK' WASHER, SCREW ONLY (VV= 12 OR 29)

FINISH TABLE - Z

- 1 - BRIGHT CHROME PLATE
- 5 - BLACK POWDER COAT
- 7 - SATIN SILVER POLYESTER POWDER COAT



TUBULAR KEY STYLE ONLY	BUSHING	ALUMINUM	SEE FINISH TABLE
	CAP	303 STAINLESS STEEL	SEE FINISH TABLE
	GASKET SEAL	RUBBER	BLACK
	MOUNTING NUT	DIE CAST ZINC	ACRYLIC LATEX SEALER
	LOCKWASHER	SPRING STEEL	ZINC PLATE CHROMATE, PLUS SEALER
	SCREW	LOW CARBON STEEL	ZINC PLATE BRIGHT CHROMATE
	PAWL	1010 STEEL	ZINC PLATE CHROMATE, PLUS SEALER
	PIN	1008 STEEL	ZINC PLATE, CHROMATE DIP
	SHAFT	LOW CARBON STEEL	ZINC PLATE CHROMATE, PLUS SEALER
	CAM	1075 STEEL	ZINC IMMERSION COATING
	SLEEVE	1075 STEEL	ZINC IMMERSION COATING
	O-RING	BUNA-N	NATURAL
	SPRING	302 STAINLESS STEEL	NATURAL
	RETAINER	302 STAINLESS STEEL	NATURAL
	CAP	DIE CAST ZINC	SEE FINISH TABLE
	HOUSING	DIE CAST ZINC	SEE FINISH TABLE
	TYPE OF COMPONENT	MATERIAL	FINISH

THIRD ANGLE PROJECTION

MILLIMETERS [IN]

TOLERANCES UNLESS OTHERWISE NOTED

ALL DIMENSIONS WITHOUT TOLERANCES ARE FOR REFERENCE ONLY.

PER ASME Y14.5M-2009

PROPRIETARY ITEM EXCEPT FOR USES EXPRESSLY GRANTED IN WRITING, INFORMATION DISCLOSED HEREON IS CONFIDENTIAL AND ALL RIGHTS, PATENT AND OTHERWISE, ARE RESERVED BY SOUTHCO, INC.

southco
CONNECT · CREATE · INNOVATE

DESCRIPTION: VISE-ACTION™ LATCH-INTERNATIONAL SERIES FIXED GRIP

SIZE: B SYSTEM: NX DWG NO.: J-E3-10

DRAWN BY: JSS/JGK DATE: 22SEP1998 SCALE: 1:1 SHEET: 1 OF 2

6

5

4

3

2

1

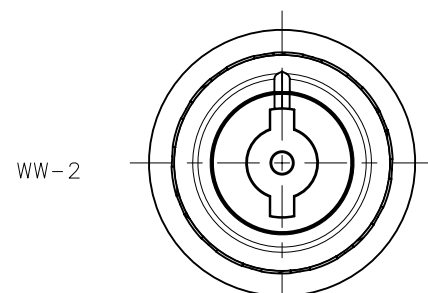
REVISION HISTORY			
REV	DATE	BY	DESCRIPTION
W	04SEP2024	SAK/DMS	PRN: P2024-1513

DRIVER

DRIVER

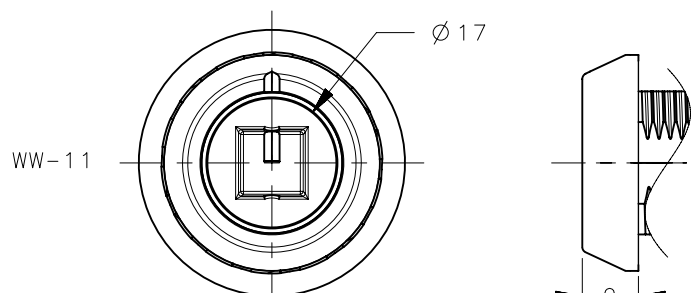
DRIVER

DRIVER



WW-2

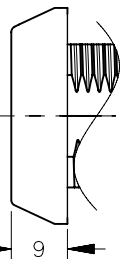
3mm DOUBLE BITTED



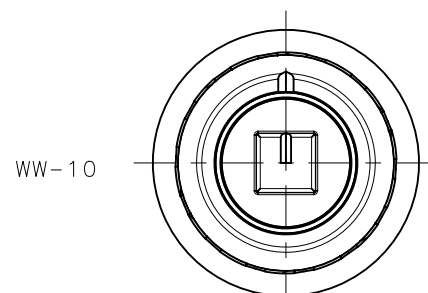
WW-11

RAILWAY

Ø17

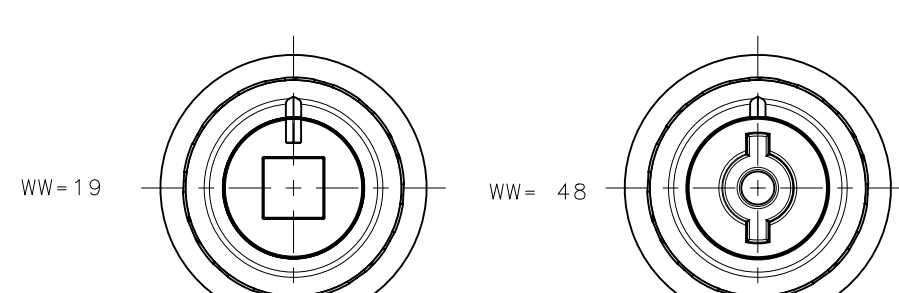


9



WW-10

8mm SQUARE

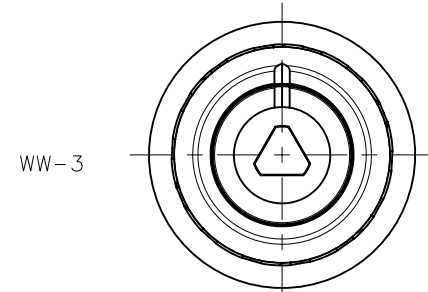


WW-19

8mm SQUARE RECESS

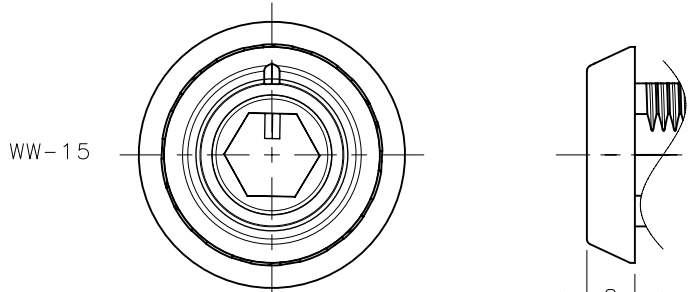
WW-48

5mm DOUBLE BITTED



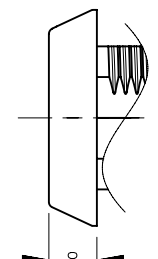
WW-3

M4 TRIANGLE

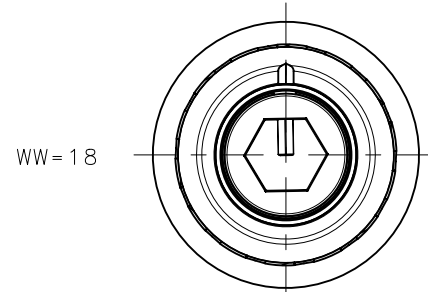


WW-15

BELLCORE 216

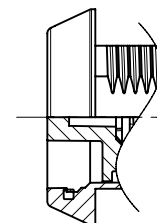


8



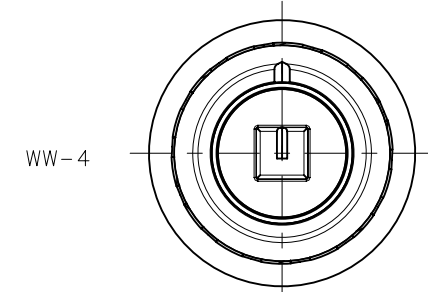
WW-18

10mm HEX



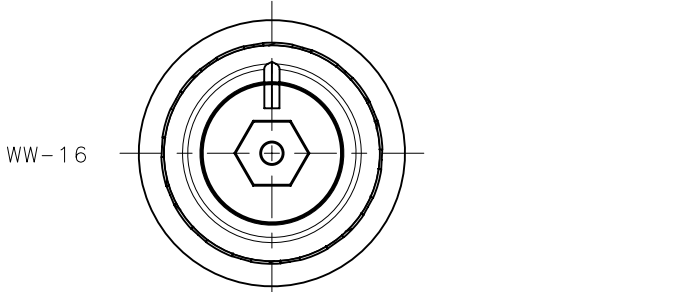
WW-20

8mm TRIANGLE RECESS



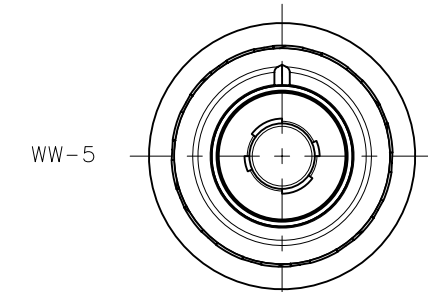
WW-4

7mm SQUARE



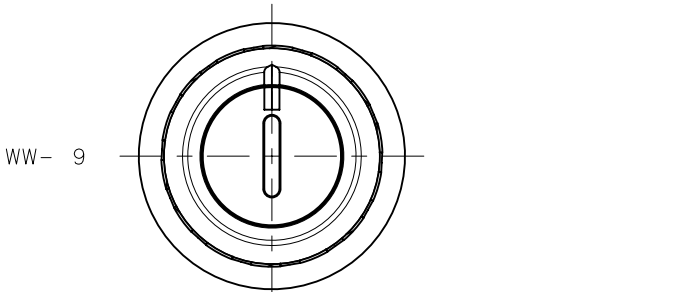
WW-16

BELLCORE ELECTRONICS



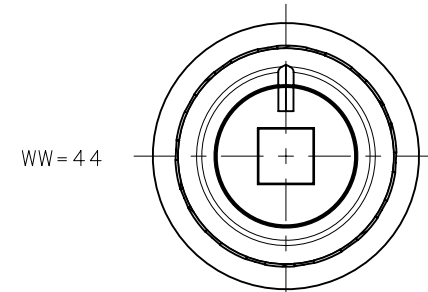
WW-5

TUBULAR KEY



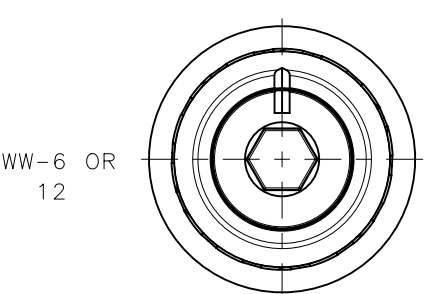
WW-9

SLOTTED RECESS



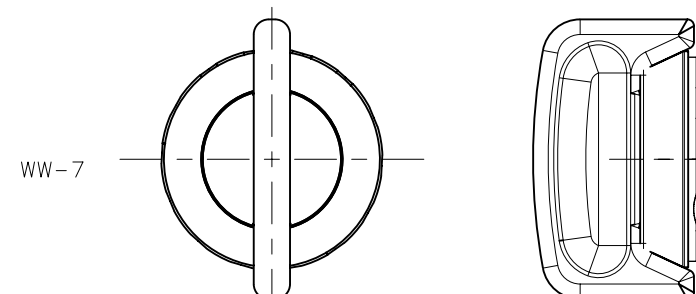
WW-44

7.25mm SQUARE RECESS



WW-6 OR 12

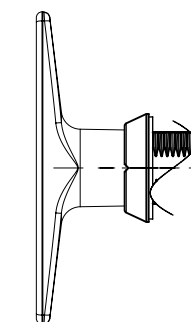
8mm HEX RECESS



WW-7

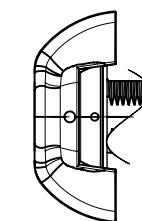
KNOB

WW=1 - NONLOCKING
 WW=8 - LOCKING: CH-751



SCALE 1:2
T HANDLE

WW=50 - NONLOCKING
 WW=51 - LOCKING (CH751)
 WW=57 - LOCKING (14603)
 WW=58 - SHUTTERED, REVERSIBLE (RK001)
 WW=59 - WITHOUT LOCK PLUG (NOTE F)
 (CUSTOMER INSTALLED)



SCALE 1:2
WING KNOB

(SEE DRAWINGS J-E3-10-4 AND J-E3-11-2 FOR DETAILS.)

THIRD ANGLE PROJECTION		southco [®] CONNECT • CREATE • INNOVATE	
MILLIMETERS [IN]			
TOLERANCES UNLESS OTHERWISE NOTED		DESCRIPTION WISE-ACTION™ LATCH-INTERNATIONAL SERIES FIXED GRIP	
ALL DIMENSIONS WITHOUT TOLERANCES ARE FOR REFERENCE ONLY.		SIZE B	SYSTEM NX
PROPRIETARY ITEM EXCEPT FOR USES EXPRESSLY GRANTED IN WRITING, INFORMATION DISCLOSED HEREON IS CONFIDENTIAL AND ALL RIGHTS, PATENT AND OTHERWISE, ARE RESERVED BY SOUTHCO, INC.		DWG NO. J-E3-10	DATE 22SEP1998
PER ASME Y14.5M-2009		DRAWN BY JSS/JGK	SCALE 1:1
		SHEET 2 OF 2	

6

5

4

3

2

1